

ALABAMA STATE PORT AUTHORITY



McDUFFIE TERMINALS - RCD #2 FOUNDATION MODIFICATIONS

KAY IVEY, GOVERNOR OF ALABAMA
JOHN C. DRISCOLL, DIRECTOR



OCTOBER 2021

DRAWING LIST

4515-G1	PROJECT COVER SHEET & DRAWING INDEX
4515-G2	GENERAL ARRANGEMENT – PLAN
4515-S1	PLAN – TOC EL (+)22'-0"
4515-S2	PLAN – TOC EL (-)26'-0"
4515-S3	SECTIONS & DETAIL (1 OF 4)
4515-S4	SECTIONS & DETAIL (2 OF 4)
4515-S5	SECTIONS & DETAIL (3 OF 4)
4515-S6	SECTIONS & DETAILS (4 OF 4)
4515-S7	BUMPER STOPS – SECTIONS & DETAILS

GENERAL NOTES:

- CONTRACTOR SHALL BE SOLELY RESPONSIBLE FOR VERIFYING THE ACTUAL EXISTING CONDITIONS AND HOW THOSE CONDITIONS AFFECT THE REQUIRED WORK. PRIOR TO SUBMITTING HIS BID, ANY DISCREPANCY NOTED BETWEEN ACTUAL CONDITIONS AND THOSE DESCRIBED BY THESE DRAWINGS SHALL BE PROMPTLY BROUGHT TO ENGINEER'S ATTENTION. NO ADDITIONAL COST ASSOCIATED WITH MODIFICATIONS TO THE SCOPE OF WORK REQUIRED DUE TO INACCURATE EXISTING CONDITIONS AS SHOWN BY THESE DRAWINGS WILL BE CONSIDERED UNLESS SAID CONDITIONS HAVE BEEN BROUGHT TO ENGINEER'S ATTENTION PRIOR TO RECEIVING BIDS.
- CONTRACTOR SHALL COORDINATE ALL CONSTRUCTION ACTIVITIES WITH ASPA/MCDUFFIE TERMINALS.
- ALL WORK SHALL CONFORM TO ALL APPLICABLE LOCAL BUILDING CODES AND ORDINANCES.
- AT ALL TIMES, THE CONTRACTOR SHALL BE SOLELY RESPONSIBLE FOR CONDITIONS OF THE JOB SITE, INCLUDING SAFETY OF PERSONS AND PROPERTY, AND FOR ALL NECESSARY INDEPENDENT ENGINEERING REVIEW OF THESE CONDITIONS. REVIEW OF THE JOB SITE BY ENGINEER IS NOT INTENDED TO INCLUDE REVIEW OF THE ADEQUACY OF CONTRACTOR'S SAFETY MEASURES.
- EQUIPMENT ATTACHMENT DETAILS AND BOLTING REQUIREMENTS INDICATED ON THE DRAWINGS ARE FOR REFERENCE ONLY. CONTRACTOR SHALL VERIFY INTERFACES BETWEEN ALL EQUIPMENT AND STRUCTURAL STEEL OR CONCRETE PRIOR TO DETAILING AND FABRICATION. ANY DISCREPANCIES BETWEEN THE DETAILS INDICATED ON THE DRAWINGS AND THE ACTUAL REQUIRED INTERFACES SHALL BE PROMPTLY BROUGHT TO ENGINEER'S ATTENTION. ANY REWORK REQUIRED DUE TO INADEQUATE COORDINATION SHALL BE SOLELY CONTRACTOR'S RESPONSIBILITY.

MATERIALS:


- ALL CAST-IN-PLACE CONCRETE SHALL ATTAIN A MINIMUM COMPRESSIVE STRENGTH OF 4000 PSI AT 28 DAYS.
- REINFORCING BARS SHALL BE DEFORMED AND SHALL CONFORM TO ASTM A615, GRADE 60.
- ANCHOR BOLT MATERIAL SHALL BE AS SHOWN ON THE DRAWINGS AND SHALL BE HOT-DIP GALVANIZED IN ACCORDANCE WITH ASTM A-123 AND ASTM A-143, UNLESS NOTED OTHERWISE ON THE DRAWINGS.
- EMBEDDED STEEL MATERIAL SHALL CONFORM TO ASTM A36. ALL EMBEDDED STEEL ITEMS WILL BE HOT-DIP GALVANIZED IN ACCORDANCE WITH ASTM A-123 AND ASTM A-143 UNLESS NOTED OTHERWISE.
- GROUT MATERIAL UNDERNEATH ALL STRUCTURAL COLUMNS, EQUIPMENT BASES, ETC SHALL BE PREPACKAGED, CEMENTITIOUS, NON-SHRINK, NON-METALLIC GROUT. GROUT MATERIAL THAT WILL BE SUBJECTED TO DYNAMIC LOADS, SUCH AS UNDERNEATH LARGE ROTATING EQUIPMENT, SHALL BE AN EPOXY BASED MATERIAL.
- EPOXY MATERIAL FOR DRILLED AND GROUTED REBAR AND ANCHORS SHALL BE AS CALLED FOR ON THE DRAWINGS OR ENGINEERING APPROVED EQUAL.
- STRUCTURAL STEEL "W", "WT" "S" SHAPES AND PLATES SHALL CONFORM TO ASTM A992, GRADE 50. TUBE STEEL SHALL CONFORM TO ASTM 500 GRADE B 46 KSI MATERIAL.
- PLATE MATERIAL SHALL BE HOT-DIP GALVANIZED AFTER FABRICATION IN ACCORDANCE WITH APPLICABLE PROVISIONS OF ASTM A123, A143, A384 AND A385. ALL DAMAGED HOT-DIP GALVANIZED AREAS SHALL BE COATED WITH ZRC COLD GALVANIZING COMPOUND OR EQUAL. SURFACE PREPARATION SHALL BE IN ACCORDANCE WITH THE MANUFACTURER'S RECOMMENDATIONS.

CONSTRUCTION METHODS:

- COORDINATE CONCRETE WORK WITH PIPING, ELECTRICAL AND MECHANICAL WORK PRIOR TO PLACING CONCRETE. EQUIPMENT ATTACHMENT DETAILS AND BOLTING REQUIREMENTS INDICATED ON DRAWINGS ARE FOR REFERENCE ONLY. CONTRACTOR SHALL VERIFY INTERFACE BETWEEN ALL EQUIPMENT AND CONCRETE FOUNDATIONS PRIOR TO PLACEMENT OF CONCRETE. ANY DISCREPANCIES BETWEEN THE DETAILS INDICATED ON THE DRAWINGS AND THE ACTUAL REQUIRED INTERFACE SHALL BE BROUGHT TO THE ATTENTION OF THE ENGINEER. ANY REWORK REQUIRED DUE TO INADEQUATE COORDINATION SHALL BE THE RESPONSIBILITY OF THE CONTRACTOR.
- EXPOSED EDGES OF CONCRETE SHALL HAVE A 3/4" CHAMFER.
- CONCRETE COVER FOR REINFORCING IN CAST-IN-PLACE CONCRETE WORK SHALL BE AS FOLLOWS UNLESS SPECIFICALLY NOTED OTHERWISE ON THE DETAIL DRAWINGS:
 - CONCRETE CAST AGAINST AND PERMANENTLY EXPOSED TO THE EARTH – 3 INCHES
 - CONCRETE EXPOSED TO WEATHER – 2 INCHES
 - ALL OTHER REINFORCING – 1 1/2 INCHES (MINIMUM)
- EXTERIOR CONCRETE FLOOR SLABS, DOCK SURFACE, ROADWAYS AND AREA PAVING SHALL HAVE A BROOM FINISH. VERTICAL WALLS SHALL HAVE A RUBBED FINISH AS DESCRIBED IN THE PROJECT SPECIFICATIONS.
- AT LOCATIONS WHERE NEW CONCRETE IS TO BE PLACED AGAINST PREVIOUSLY HARDENED CONCRETE, THE EXISTING CONCRETE SURFACE SHALL BE CLEAN AND FREE OF LAITANCE AND ROUGHENED TO A FULL AMPLITUDE OF APPROXIMATELY 1/4 INCH. PRIOR TO PLACING THE NEW CONCRETE, AN EPOXY BONDING AGENT SHALL BE APPLIED TO THE CLEAN, ROUGHENED SURFACE. EPOXY BONDING AGENT SHALL BE "CEILCOTE 17 BRUTEM" OR APPROVED EQUAL.

TESTING

- PERFORM SLUMP TEST, AIR ENTRAINMENT, AND STRENGTH TESTS IN ACCORDANCE WITH THE REQUIREMENTS OF ASTM.
- PREPARE (4) CYLINDERS FOR EACH BATCH TO BE TESTED. TEST ONE AT 7 DAYS, TWO AT 28 DAYS AND HOLD ONE CYLINDER IN RESERVE.

	ALABAMA STATE PORT AUTHORITY	
MOBILE	ALABAMA	
CLIENT DWG NO:		
MCDUFFIE TERMINALS		
RCD #2 – FOUNDATION MODIFICATIONS		
PROJECT COVER SHEET & DRAWING INDEX		
FOR: ALABAMA STATE PORT AUTHORITY		
PROJECT NO: 4515	DWG NO: G1	REV: A



THIS DOCUMENT IS THE PROPERTY OF APTIM. IT MAY CONTAIN INFORMATION DESCRIBING TECHNOLOGY OWNED BY APTIM AND DEEMED TO BE COMMERCIALY SENSITIVE. IT IS TO BE USED ONLY IN CONNECTION WITH WORK BEING PERFORMED BY APTIM. REPRODUCTION IN WHOLE OR IN PART FOR ANY PURPOSE OTHER THAN WORK PERFORMED BY APTIM IS FORBIDDEN EXCEPT BY EXPRESS WRITTEN PERMISSION OF APTIM. IT IS TO BE SAFEGUARDED AGAINST BOTH DELIBERATE AND INADVERTENT DISCLOSURE TO ANY THIRD PARTY.

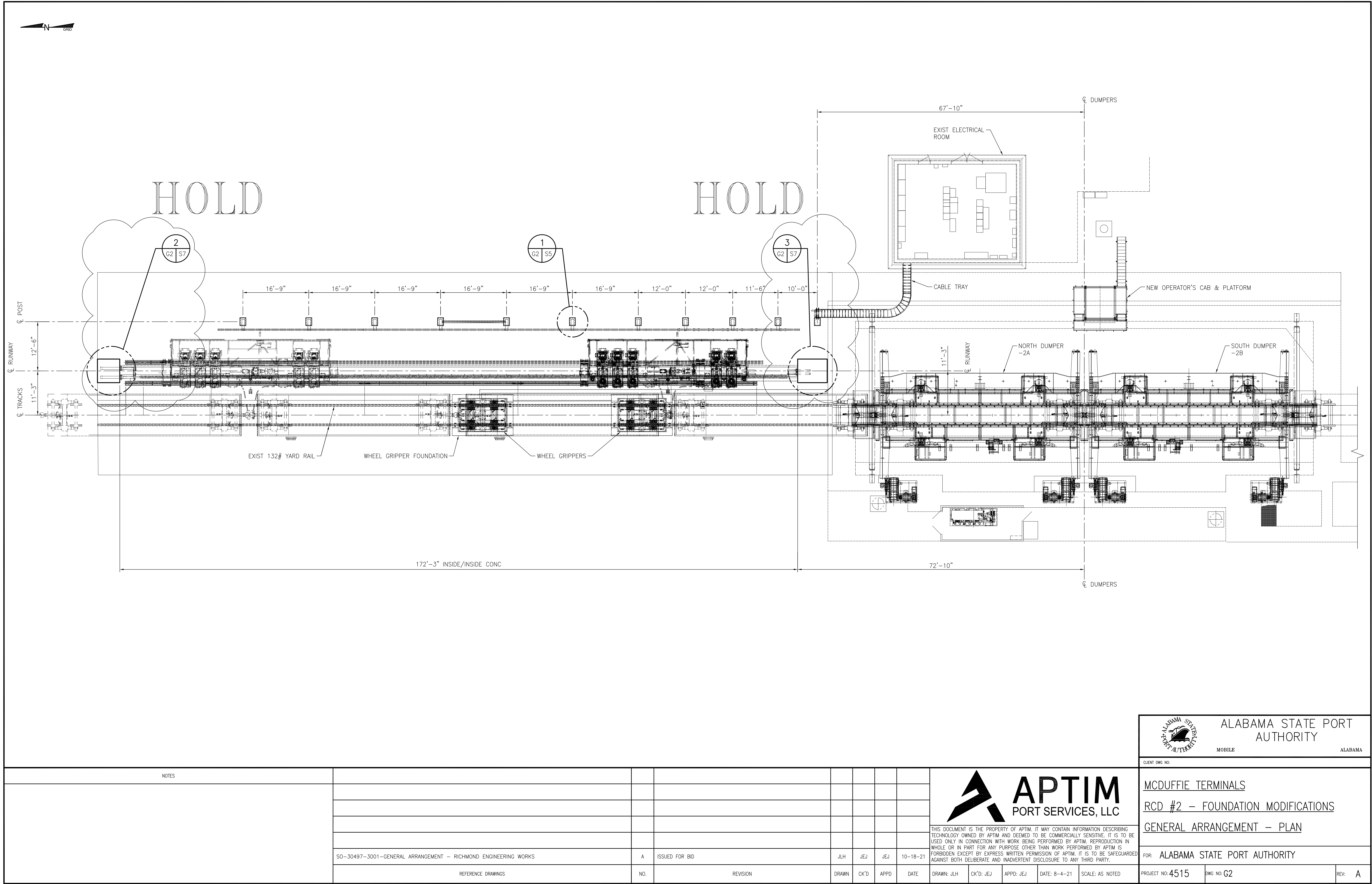
DRAWN: JLH CK'D: JEJ APPD: JEJ DATE: 8-4-21 SCALE: NONE

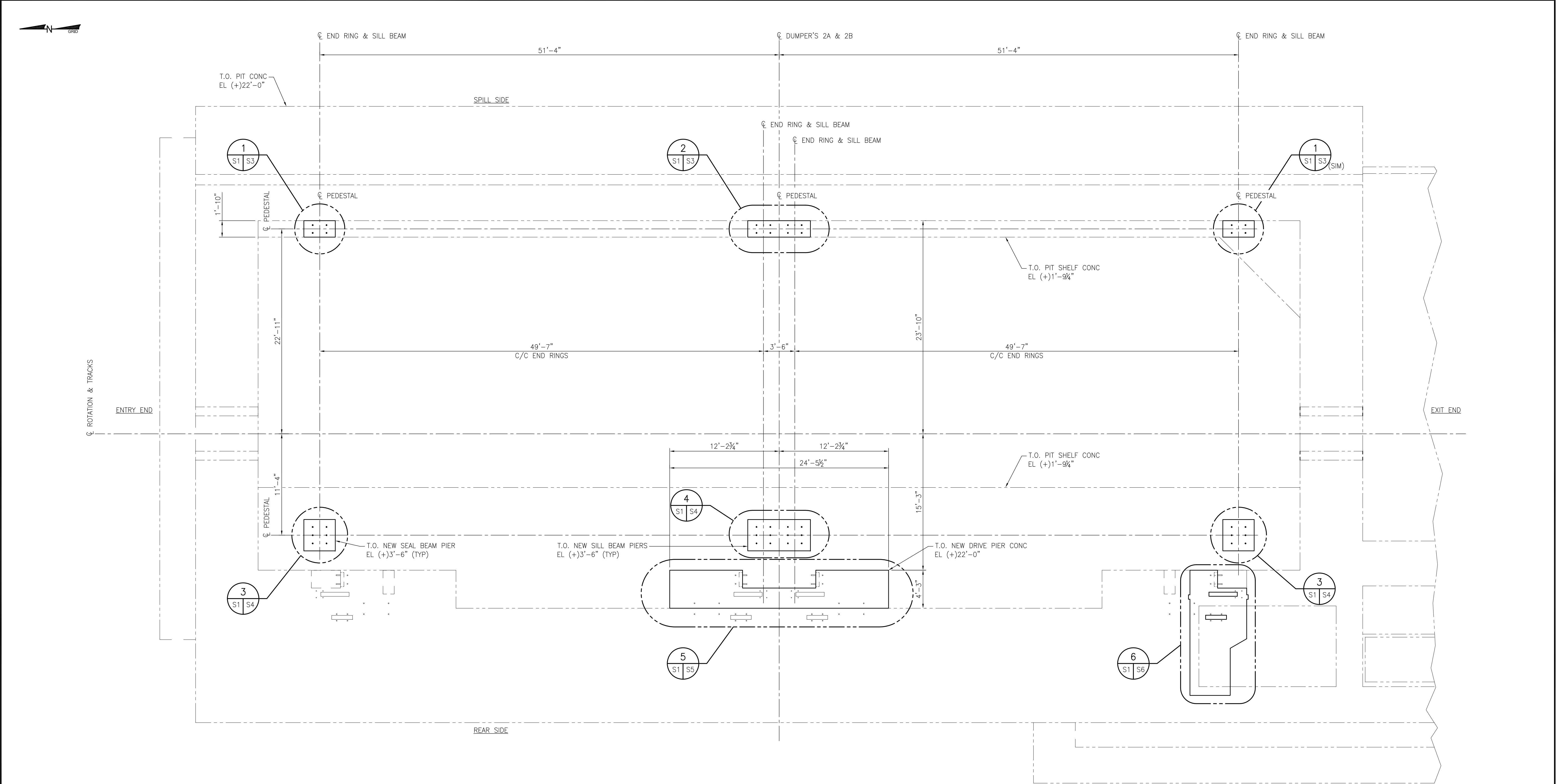
NOTES

REFERENCE DRAWINGS

NO. REVISION

DRAWN CK'D APPD DATE



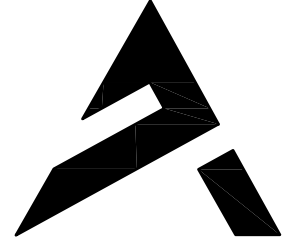


PLAN - TOC EL (+)22'-0"

3/16"=1'-0"


NOTES
1. SEE GENERAL NOTES, SHEET G1.

ROTARY CAR DUMPER PIT #2 - VOLKERT & ASSOCIATES									
SO-3497-2003-DUMPER PIT - RICHMOND ENGINEERING WORKS									
SO-3497-2002-DEMO PLAN - RICHMOND ENGINEERING WORKS	A	ISSUED FOR BID				JLH	JEJ	JEJ	10-18-21
REFERENCE DRAWINGS	NO.	REVISION				DRAWN	CK'D	APPD	DATE



APTIM
PORT SERVICES, LLC

THIS DOCUMENT IS THE PROPERTY OF APTIM. IT MAY CONTAIN INFORMATION DESCRIBING TECHNOLOGY OWNED BY APTIM AND DEEMED TO BE COMMERCIALY SENSITIVE. IT IS TO BE USED ONLY IN CONNECTION WITH WORK BEING PERFORMED BY APTIM. REPRODUCTION IN WHOLE OR IN PART FOR ANY PURPOSE OTHER THAN WORK PERFORMED BY APTIM IS FORBIDDEN EXCEPT BY EXPRESS WRITTEN PERMISSION OF APTIM. IT IS TO BE SAFEGUARDED AGAINST BOTH DELIBERATE AND INADVERTENT DISCLOSURE TO ANY THIRD PARTY.



ALABAMA STATE
PORT
AUTHORITY

MOBILEALABAMA

CLIENT DWG NO:

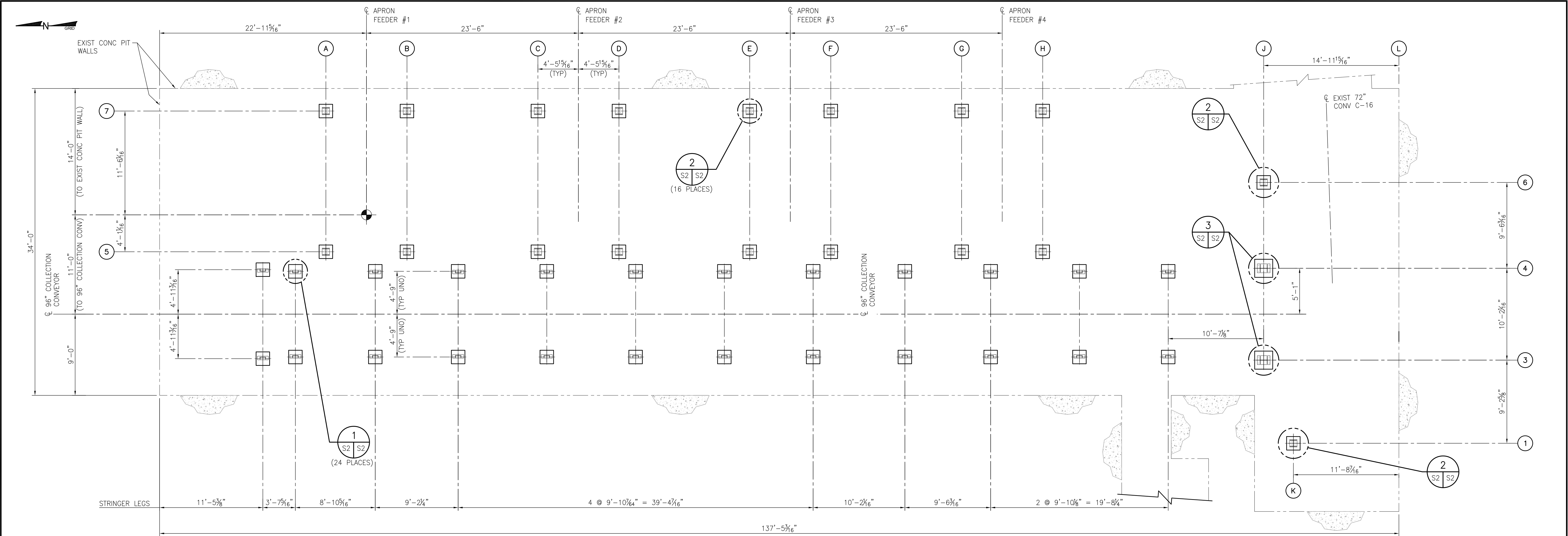
MCDUFFIE TERMINALS

RCD #2 - FOUNDATION MODIFICATIONS

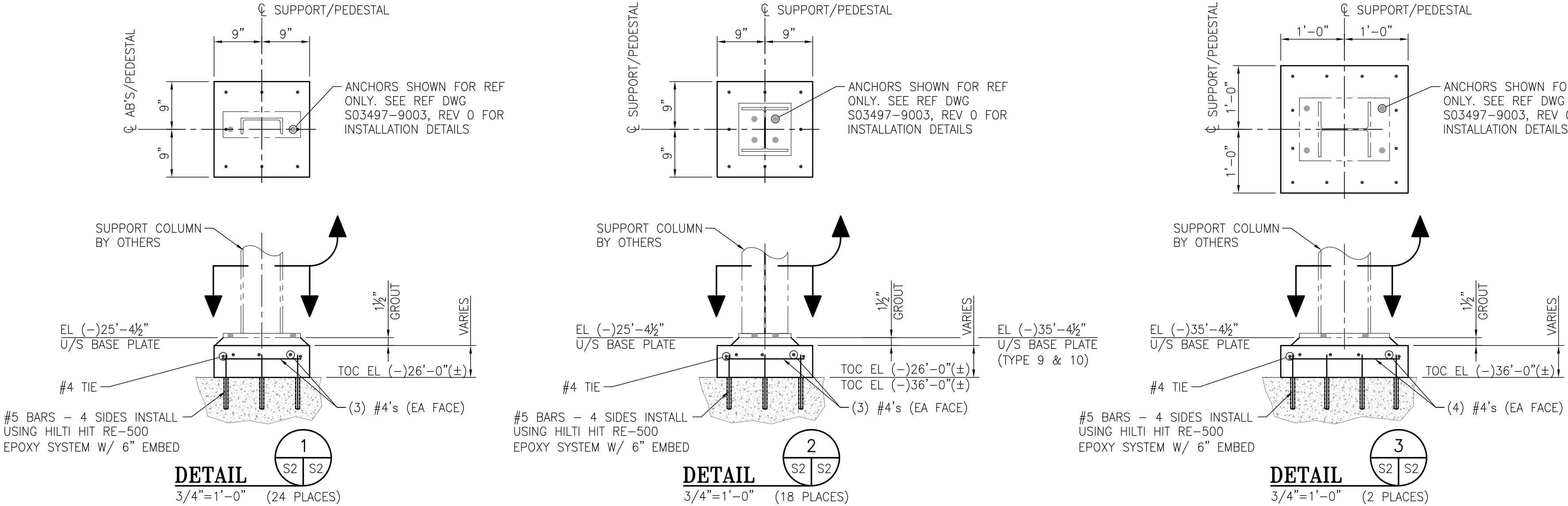
PLAN - TOC EL (+)22'-0"

FOR: ALABAMA STATE PORT AUTHORITY

PROJECT NO: 4515	DWG NO: S1	REV: A
------------------	------------	--------



PLAN - TOC EL (-)26'-0"±
3/16"=1'-0"



NOTES	
1. SEE GENERAL NOTES, SHEET G1.	

ROTARY CAR DUMPER PIT #2 - VOLKERT & ASSOCIATES									
SO-3497-9003-APRON FEEDER - RICHMOND ENGINEERING WORKS	A	ISSUED FOR BID		JLH	JEJ	JEJ	10-18-21		
REFERENCE DRAWINGS	NO.	REVISION		DRAWN	CK'D	APPD	DATE		

THIS DOCUMENT IS THE PROPERTY OF APTIM. IT MAY CONTAIN INFORMATION DESCRIBING TECHNOLOGY OWNED BY APTIM AND DEEMED TO BE COMMERCIALY SENSITIVE. IT IS TO BE USED ONLY IN CONNECTION WITH WORK BEING PERFORMED BY APTIM. REPRODUCTION IN WHOLE OR IN PART FOR ANY PURPOSE OTHER THAN WORK PERFORMED BY APTIM IS FORBIDDEN EXCEPT BY EXPRESS WRITTEN PERMISSION OF APTIM. IT IS TO BE SAFEGUARDED AGAINST BOTH DELIBERATE AND INADVERTENT DISCLOSURE TO ANY THIRD PARTY.

DRAWN: JLH CK'D: JEJ APPD: JEJ DATE: 8-4-21 SCALE: AS NOTED

ALABAMA STATE PORT AUTHORITY

MOBILE ALABAMA

CLIENT DWG NO:

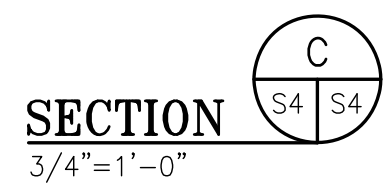
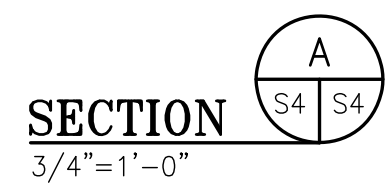
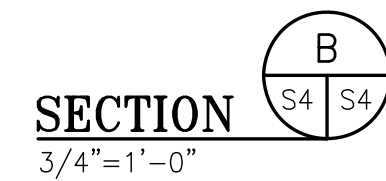
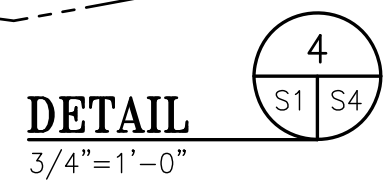
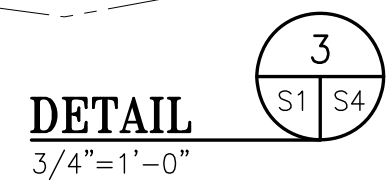
MCDUFFIE TERMINALS

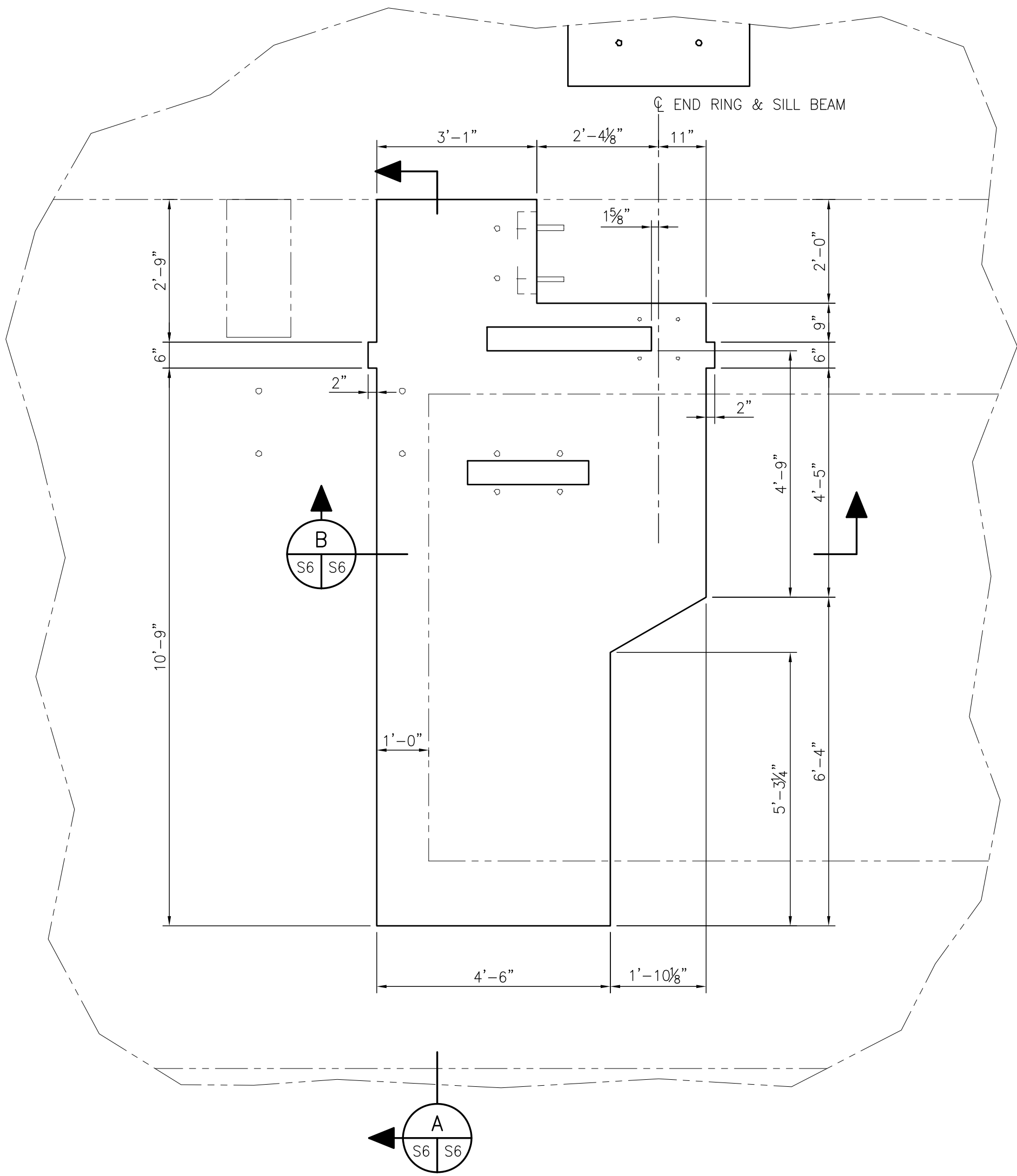
RCD #2 - FOUNDATION MODIFICATIONS

PLAN - TOC EL (-)26'-0"±

FOR: ALABAMA STATE PORT AUTHORITY

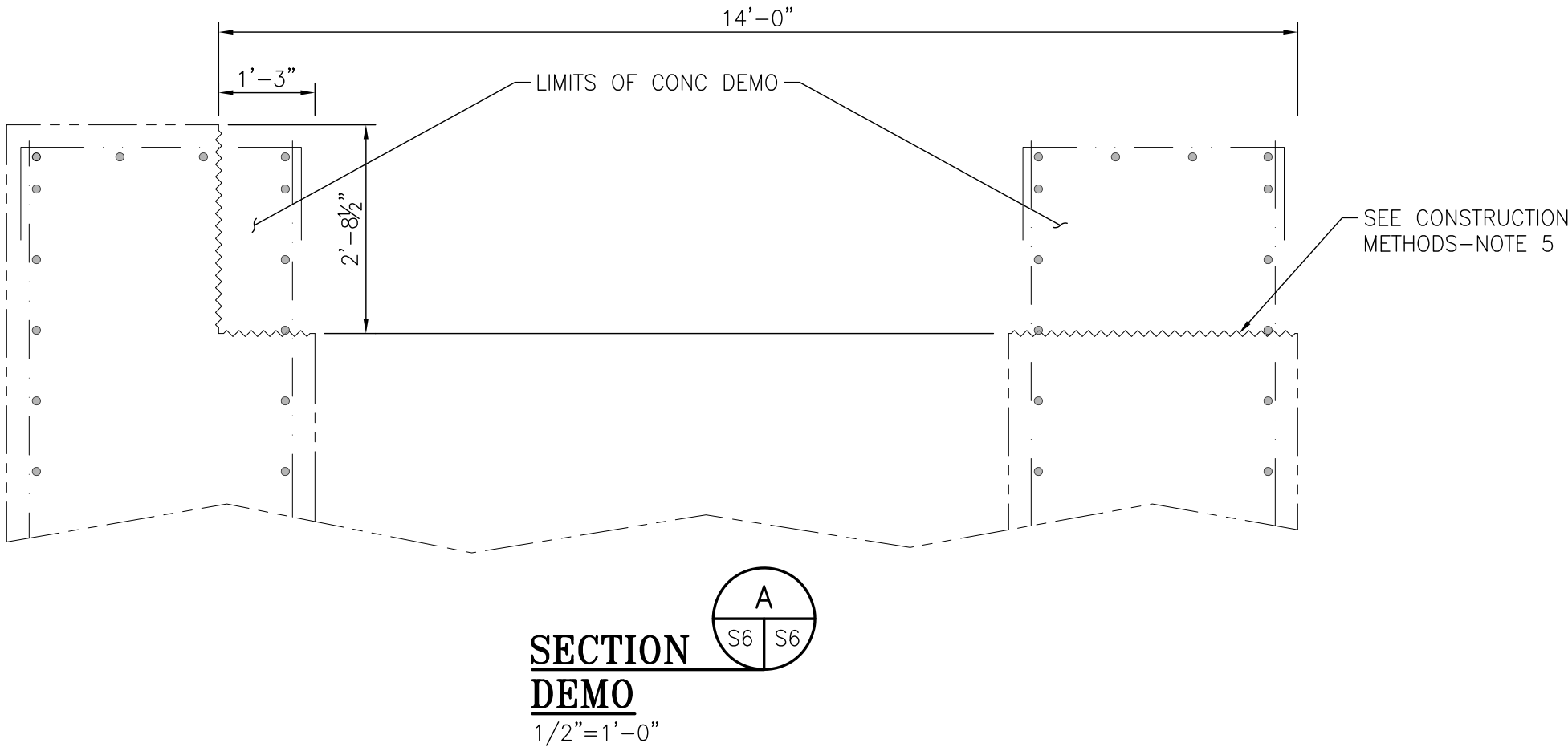
PROJECT NO: 4515 DWG NO: S2 REV: A

Form: CMS-830-00-FM-02104 Aptim ANSI D.dwg



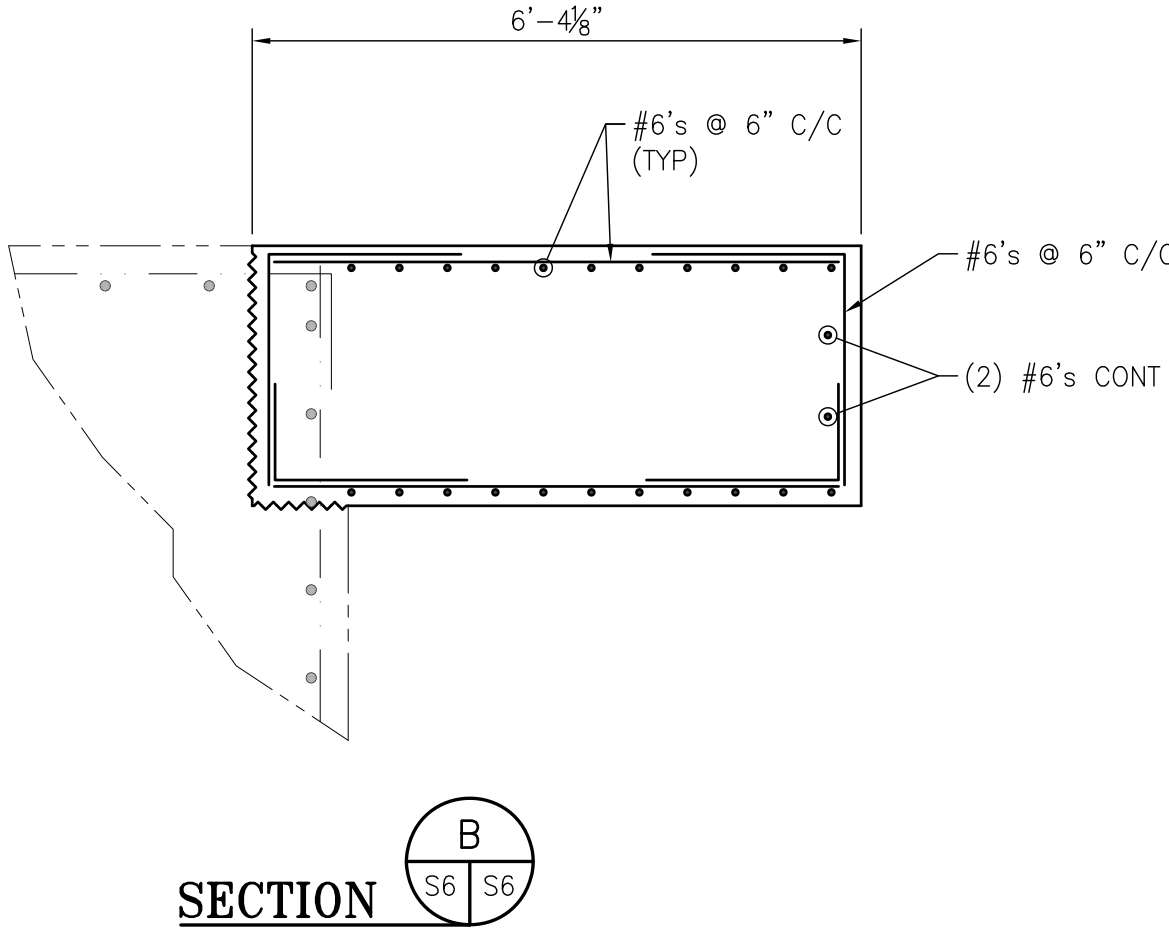
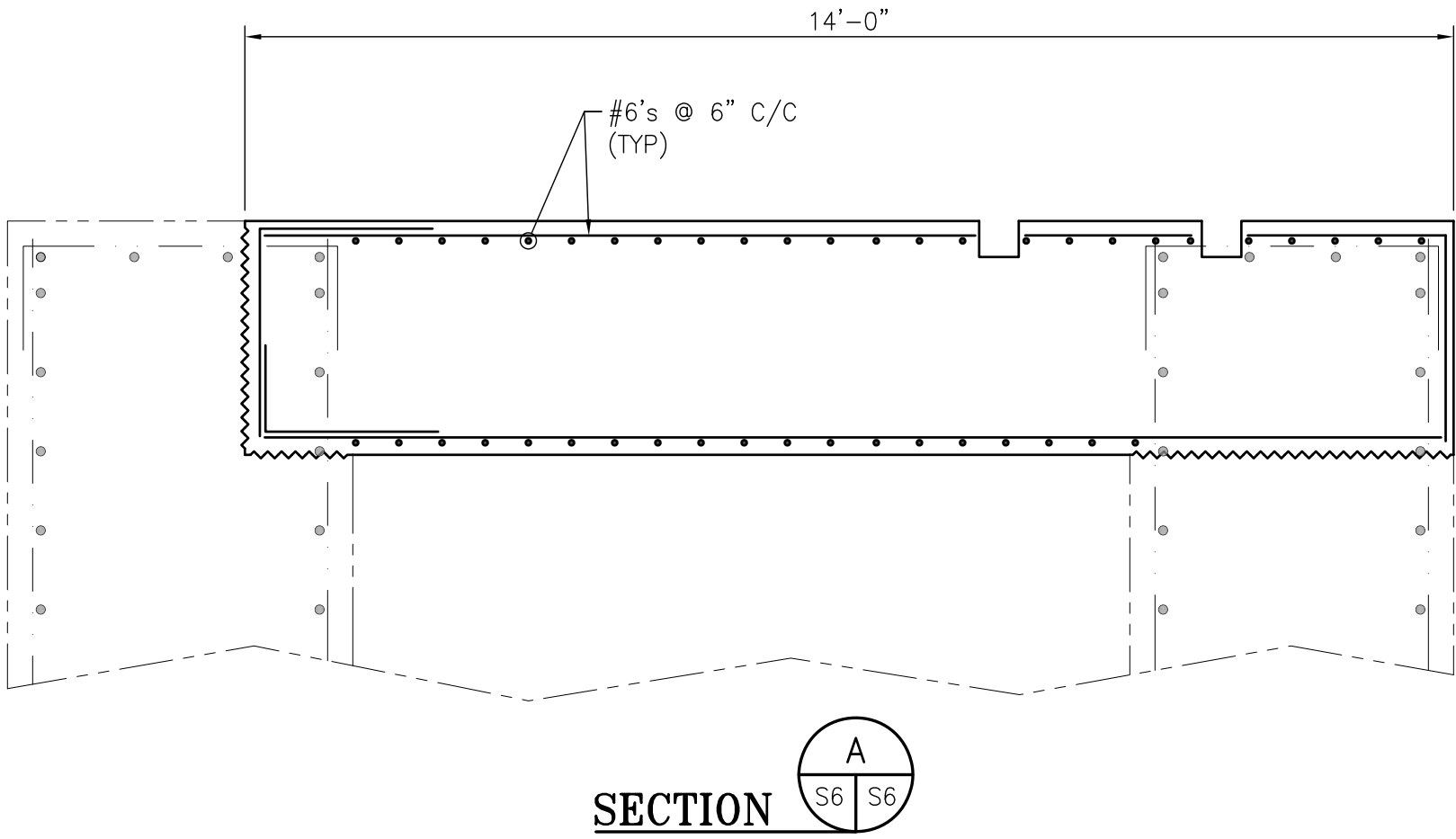
DETAIL
1/2"=1'-0"

NOTE:
SEE R.E.W. DWG SO 3497-2003, SHT 1/6, REV 0 FOR
INFORMATION ON ANCHOR BOLTS & SHEAR POCKETS.



SECTION A
1/2"=1'-0"

NOTE:
ALL CONCRETE DEMOLITION TO BE CONTROLLED BY 1"
DEEP SAW CUTS. ALL DEMOLITION TO BE PERFORMED
BY HAND OPERATED EQUIPMENT. EXTREME CARE TO
BE TAKEN AS TO NOT DAMAGE THE EXISTING REBAR.

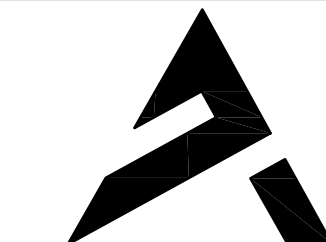


SECTION B
1/2"=1'-0"

ALABAMA STATE
PORT
AUTHORITY
MOBILE ALABAMA

NOTES	
1. SEE GENERAL NOTES, SHEET G1.	

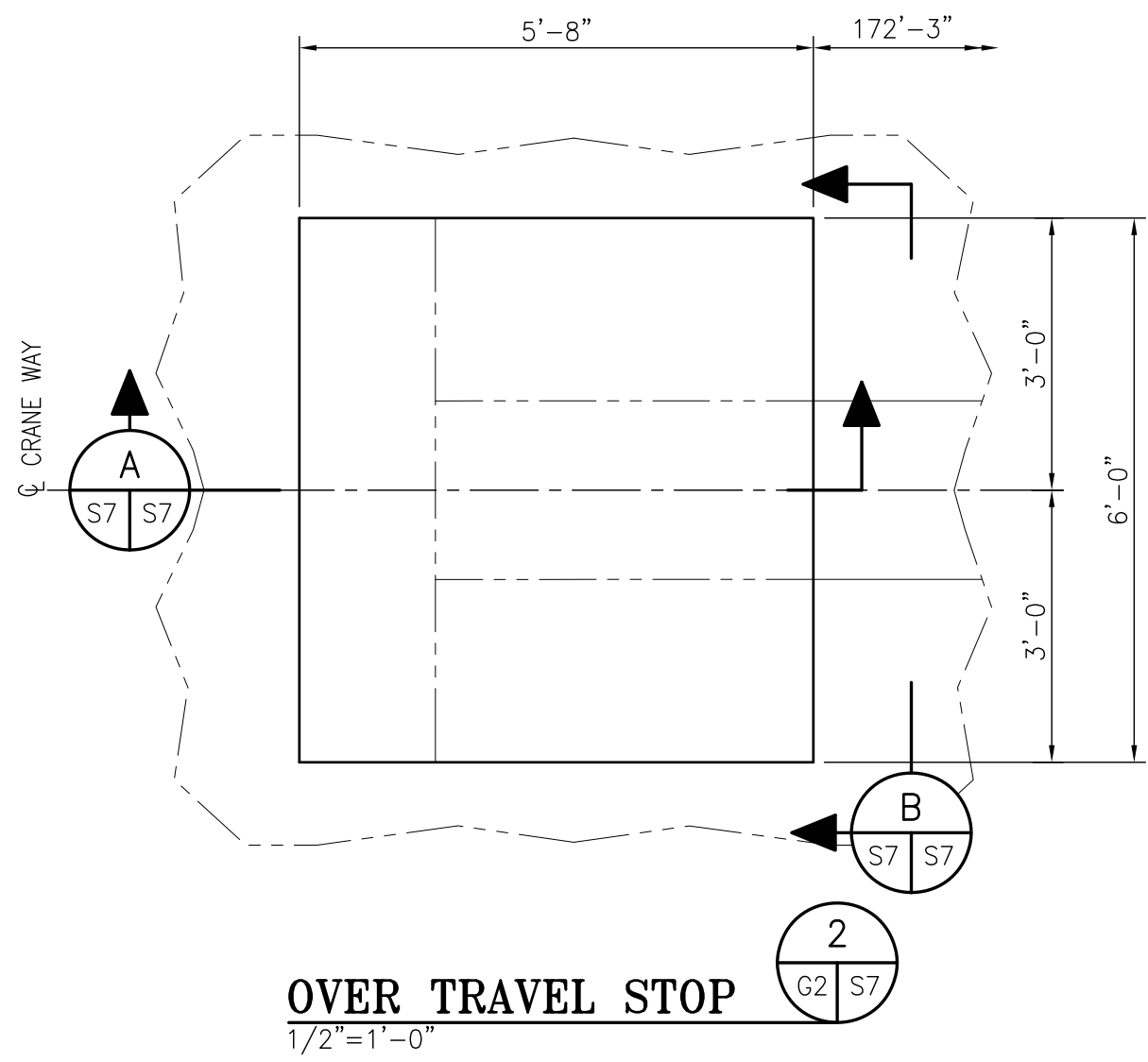
ROTARY CAR DUMPER PIT #2 - VOLKERT & ASSOCIATES									
SO-3497-2003-DUMPER PIT - RICHMOND ENGINEERING WORKS									
SO-3497-2002-DEMO PLAN - RICHMOND ENGINEERING WORKS	A	ISSUED FOR BID	JLH	JEJ	JEJ	10-18-21			
REFERENCE DRAWINGS	NO.	REVISION	DRAWN	CK'D	APPD	DATE	DRAWN: JLH	CK'D: JEJ	APPD: JEJ



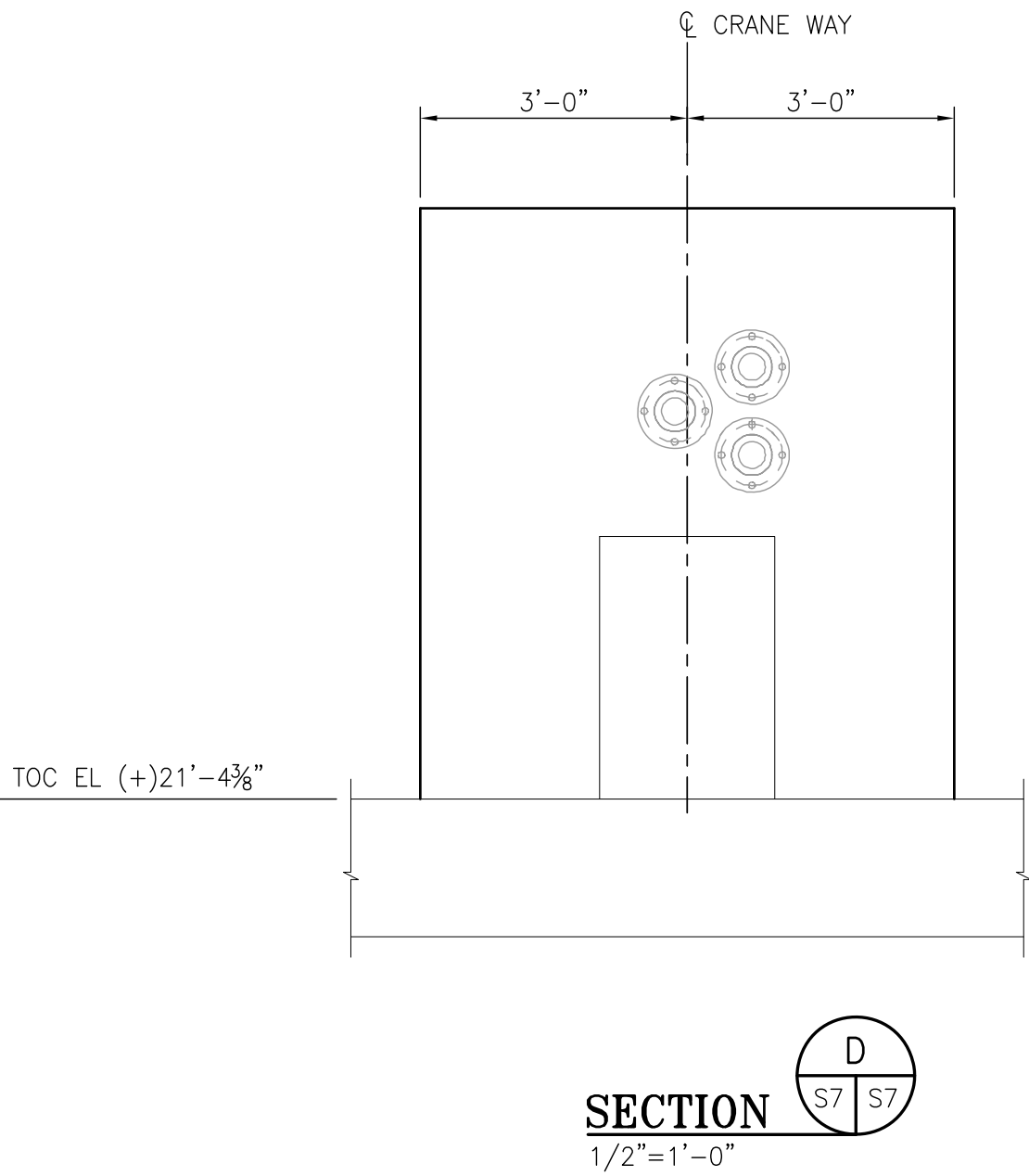
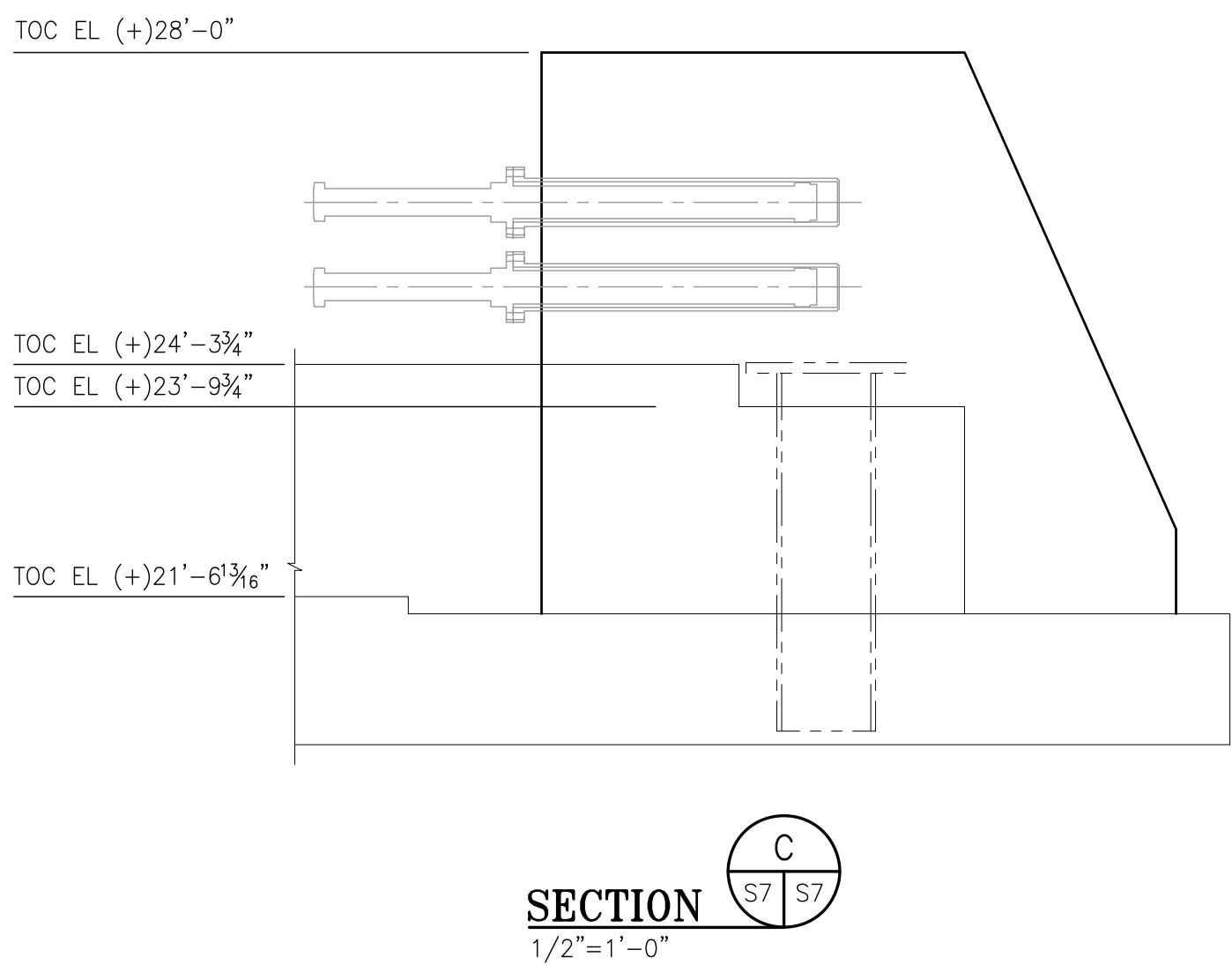
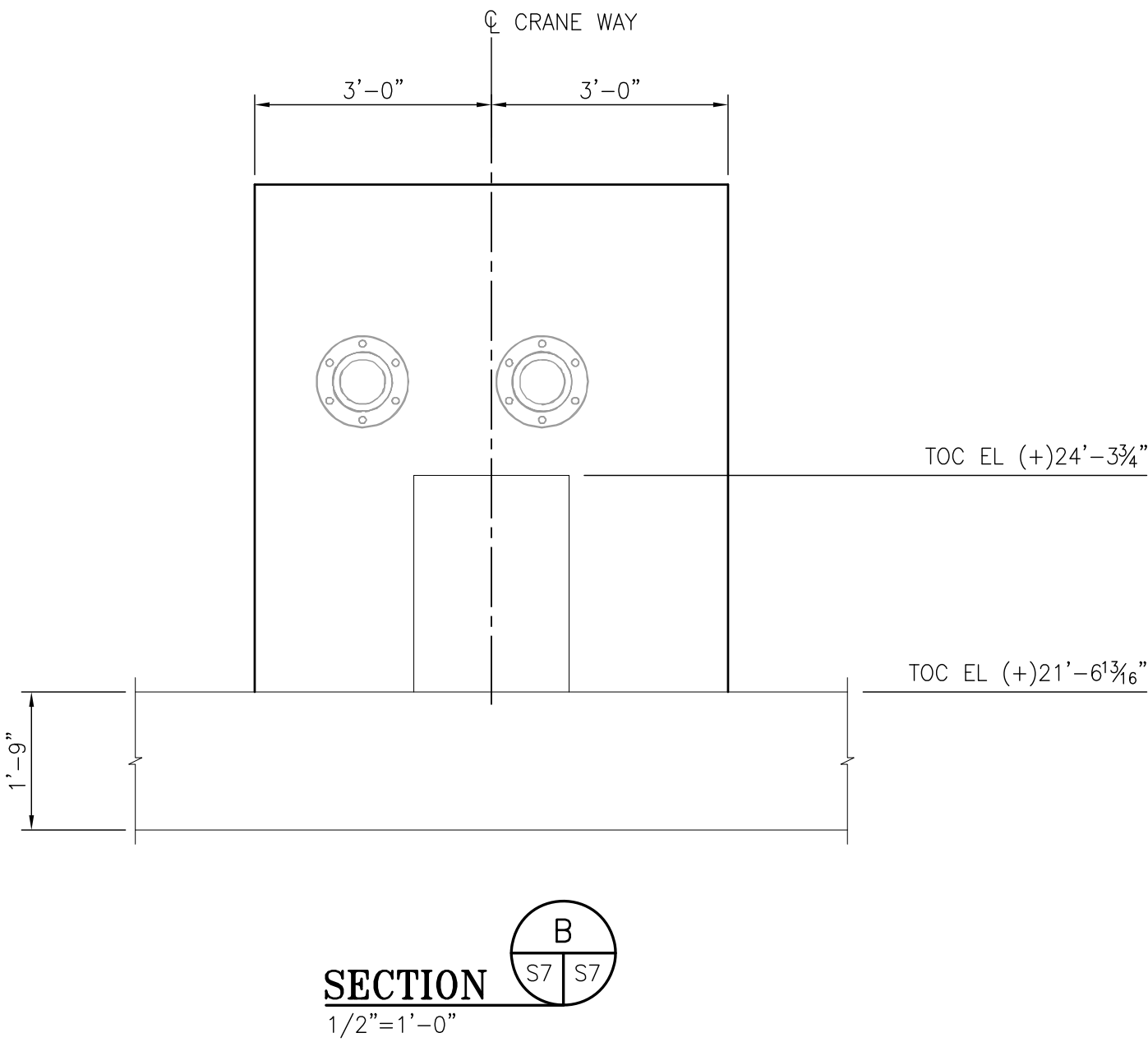
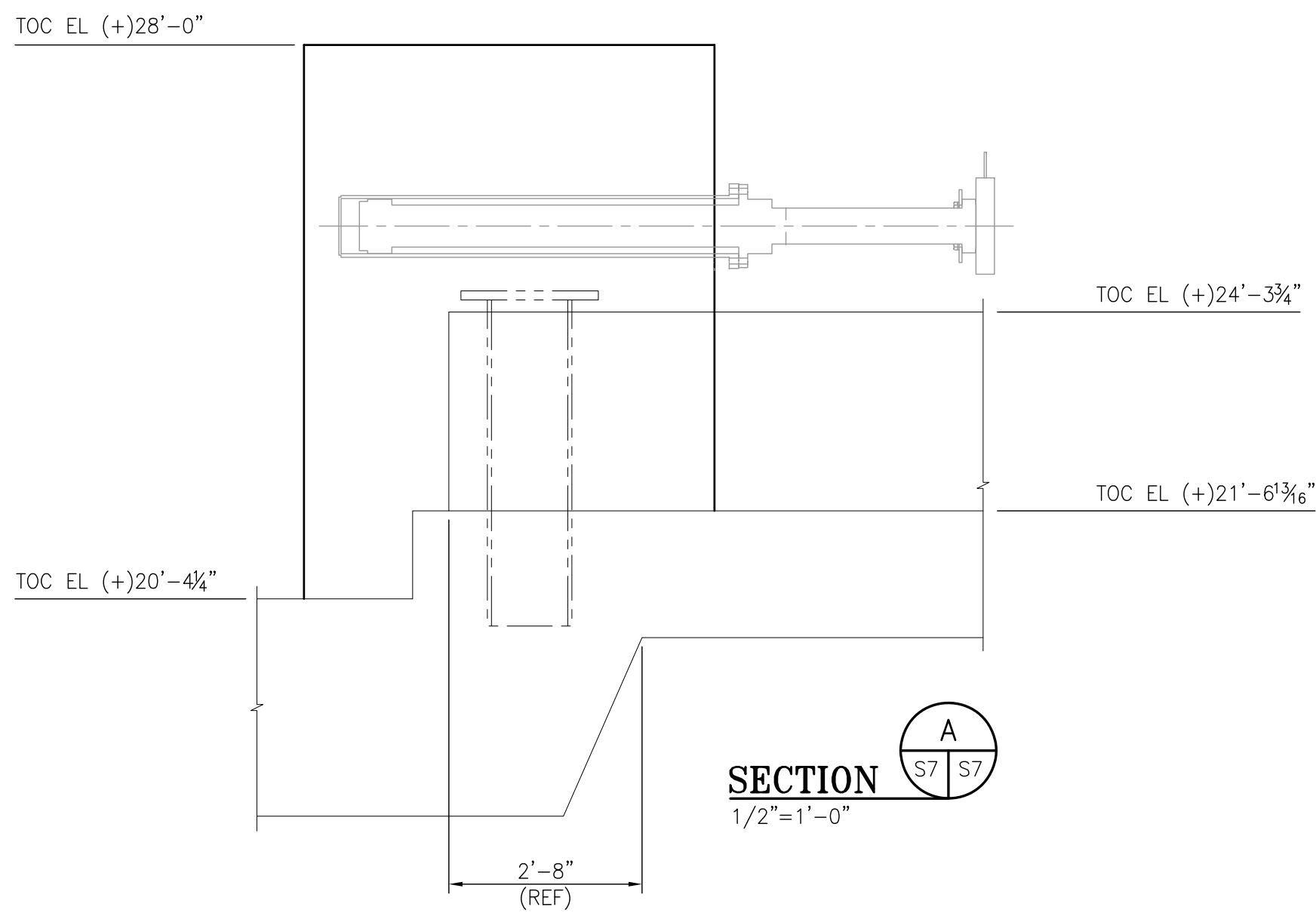
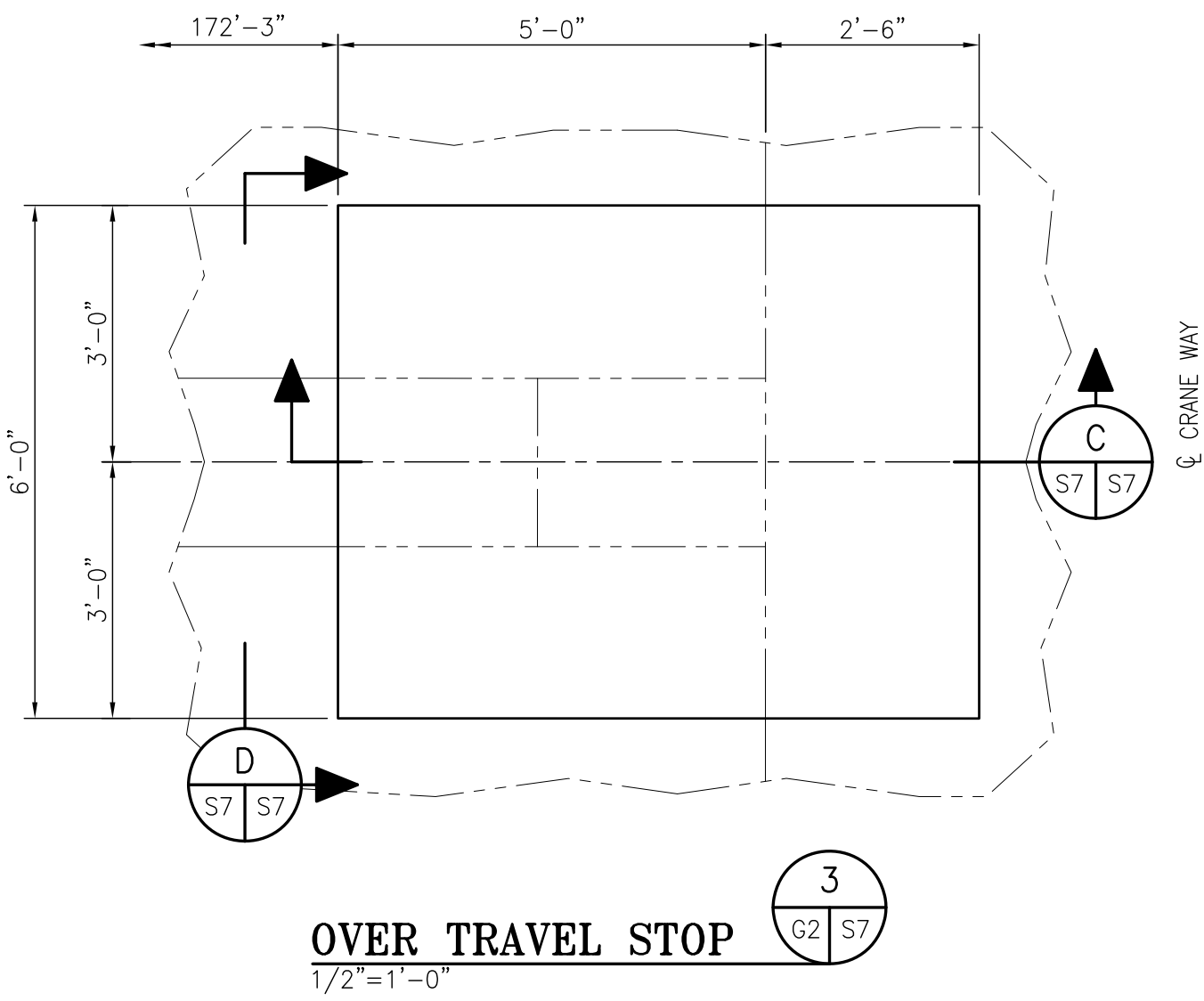
APTIM
PORT SERVICES, LLC

THIS DOCUMENT IS THE PROPERTY OF APTIM. IT MAY CONTAIN INFORMATION DESCRIBING TECHNOLOGY OWNED BY APTIM AND DEEMED TO BE COMMERCIALY SENSITIVE. IT IS TO BE USED ONLY IN CONNECTION WITH WORK BEING PERFORMED BY APTIM. REPRODUCTION IN WHOLE OR IN PART FOR ANY PURPOSE OTHER THAN WORK PERFORMED BY APTIM IS FORBIDDEN EXCEPT BY EXPRESS WRITTEN PERMISSION OF APTIM. IT IS TO BE SAFEGUARDED AGAINST BOTH DELIBERATE AND INADVERTENT DISCLOSURE TO ANY THIRD PARTY.


CLIENT DWG NO:	
MCDUFFIE TERMINALS	
RCD #2 - FOUNDATION MODIFICATIONS	
SECTIONS & DETAILS (4 OF 4)	
FOR: ALABAMA STATE PORT AUTHORITY	
PROJECT NO: 4515	DWG NO: S6
REV: A	



NOTE:
BUMPER STOPS SHOWN FOR REFERENCE ONLY. SEE
R.E.W. DWG SO 3497-3002 FOR ADDITIONAL DETAILS.



HOLD



ALABAMA STATE
PORT
AUTHORITY

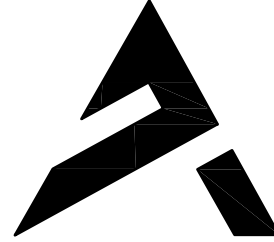
MOBILE

ALABAMA

CLIENT DWG NO:

NOTES	
1. SEE GENERAL NOTES, SHEET G1.	

	A	ISSUED FOR BID		JLH	JEJ	JEJ	10-18-21		
REFERENCE DRAWINGS	NO.	REVISION		DRAWN	CK'D	APPD	DATE		



APTIM
PORT SERVICES, LLC

THIS DOCUMENT IS THE PROPERTY OF APTIM. IT MAY CONTAIN INFORMATION DESCRIBING TECHNOLOGY OWNED BY APTIM AND DEEMED TO BE COMMERCIALY SENSITIVE. IT IS TO BE USED ONLY IN CONNECTION WITH WORK BEING PERFORMED BY APTIM. REPRODUCTION IN WHOLE OR IN PART FOR ANY PURPOSE OTHER THAN WORK PERFORMED BY APTIM IS FORBIDDEN EXCEPT BY EXPRESS WRITTEN PERMISSION OF APTIM. IT IS TO BE SAFEGUARDED AGAINST BOTH DELIBERATE AND INADVERTENT DISCLOSURE TO ANY THIRD PARTY.

MCDUFFIE TERMINALS		
RCD #2 – FOUNDATION MODIFICATIONS		
BUMPER STOPS – SECTIONS & DETAILS		
FOR: ALABAMA STATE PORT AUTHORITY		
PROJECT NO: 4515	DWG NO: S7	REV: A