

FOR PLAN VIEW & ELEVATION SEE DWG. #M-167204

**Dravo
Wellman**

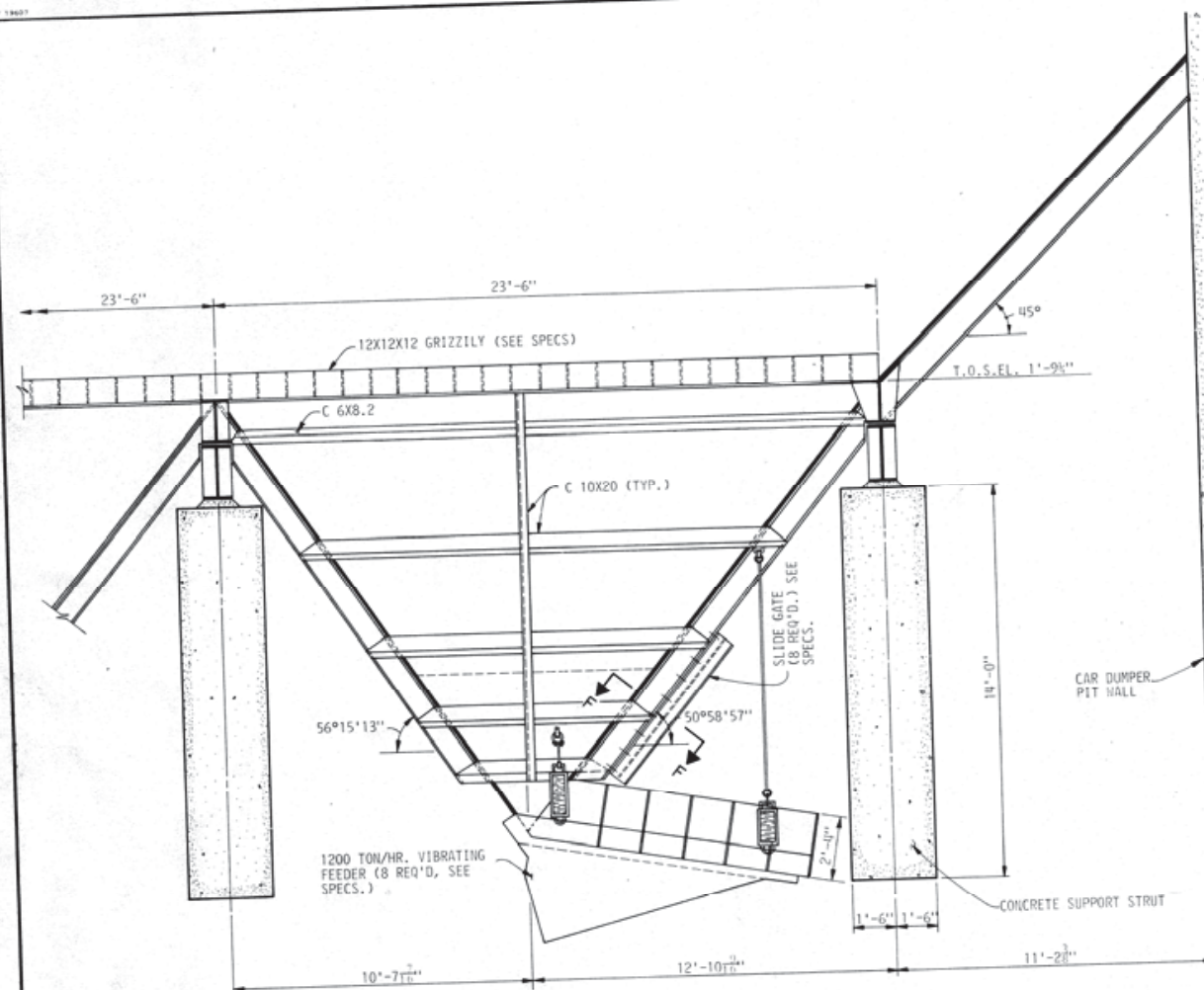
ALABAMA STATE DOCKS
Mc DUFFIE TERMINALS
ROTARY CAR DUMPER
END ELEVATION

ISSUED FOR CONSTRUCTION DATE 8-16-81 APPROVED:

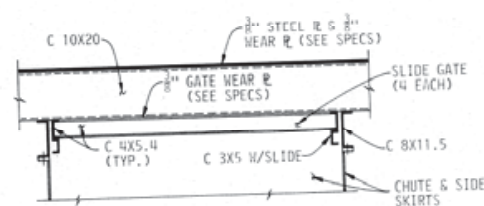
FOR APPROVAL	DATE	DA 5	DATE: 2/10/01

DATE: 6-24-81	DRAWING NO. M-167205		REV. NO. 3
DRAWN JMS	DATE 6-24-81	B/M	
CHECKED V.M.	DATE 8-14-81	74	

SCALE $\frac{1}{4}'' = 1'-0''$ CONTRACT 16-23608 M-107205 J



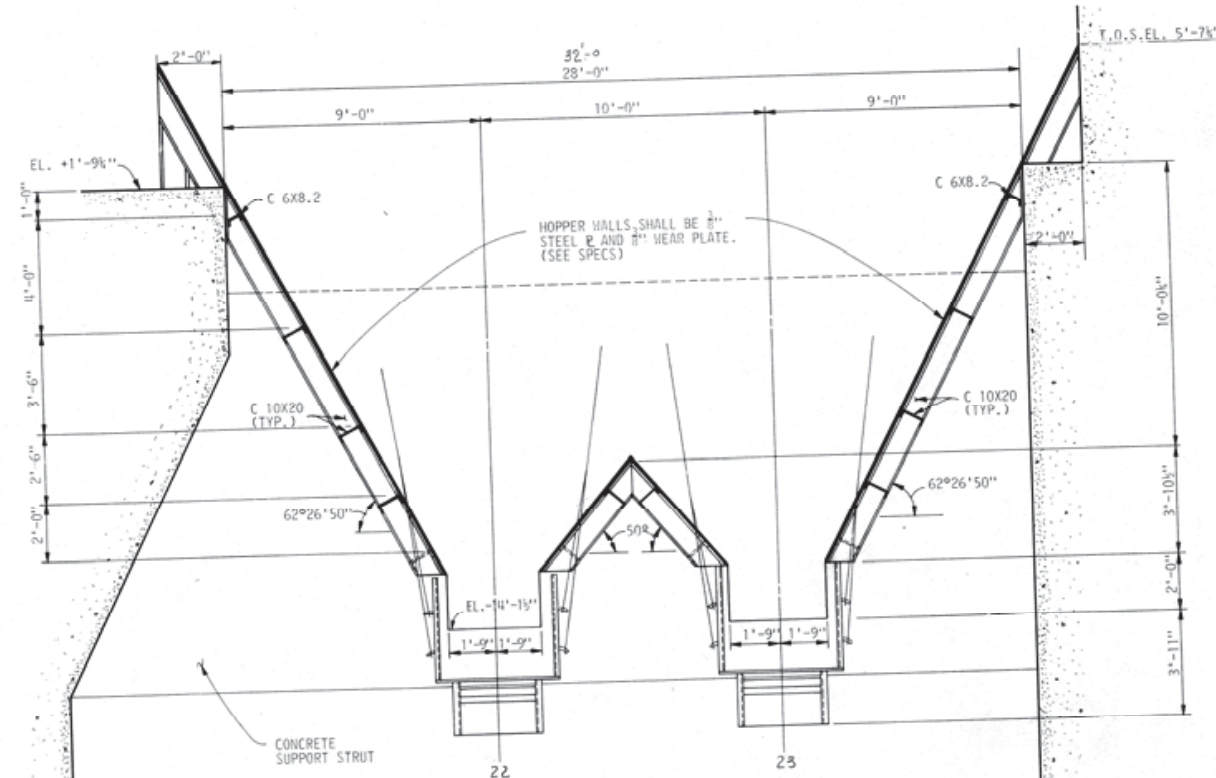
SECTION B-B
SCALE: 3/8" = 1'-0"



SECTION F-F

NOTES:

1. SUPPORT CHANNELS SHALL BE CUT AND WELDED TO FIT FLUSH AT EDGES AND CORNERS.
2. FEEDERS SHALL BE MOUNTED AS PER MANUFACTURERS RECOMMENDATIONS AND APPROVED BY THE ENGINEER.
3. THE CONTRACTOR SHALL SUBMIT SHOP DRAWINGS FOR APPROVAL PRIOR TO FABRICATION OF MATERIALS.
4. FOR ADDITIONAL INFORMATION ON THE CAR DUMPER PIT, SEE SHEETS 173 THRU 177.



SECTION C-C
SCALE: 3/8" = 1'-0"

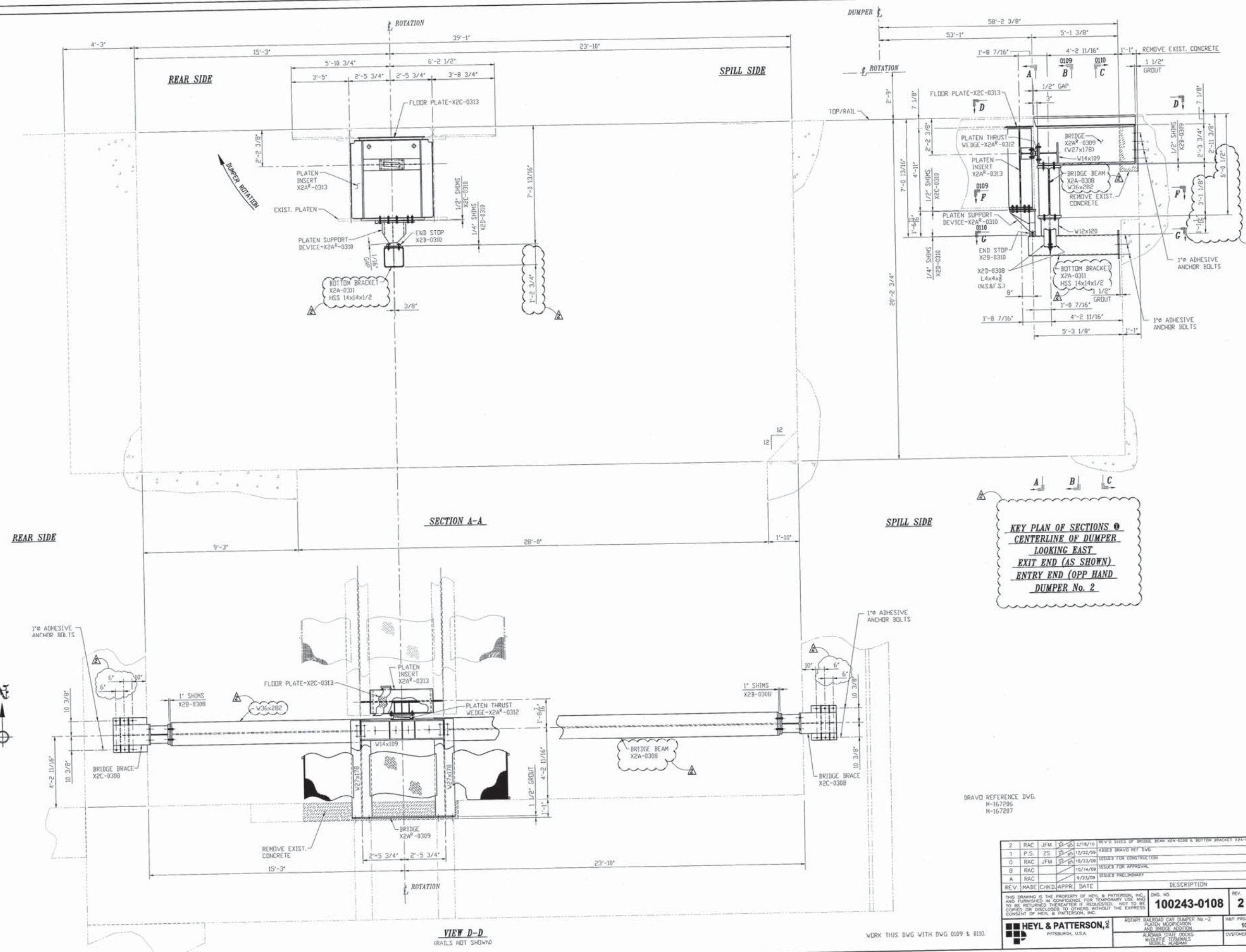
SECTIONS
THE INDUSTRIAL DEVELOPMENT BOARD OF THE CITY OF MOBILE, ALABAMA (ALABAMA STATE DOCKS DEPARTMENT PROJECT)

CAR DUMPER HOPPER & FEEDER SYSTEM

DAVID VOLKERT & ASSOCIATES CONSULTING ENGINEERS

DESIGNED C.L.H.	DETAILED V.M.B.	TRACED V.M.B.
CHECKED C.L.H.	CHECKED	CHECKED
DATE		

REVISIONS



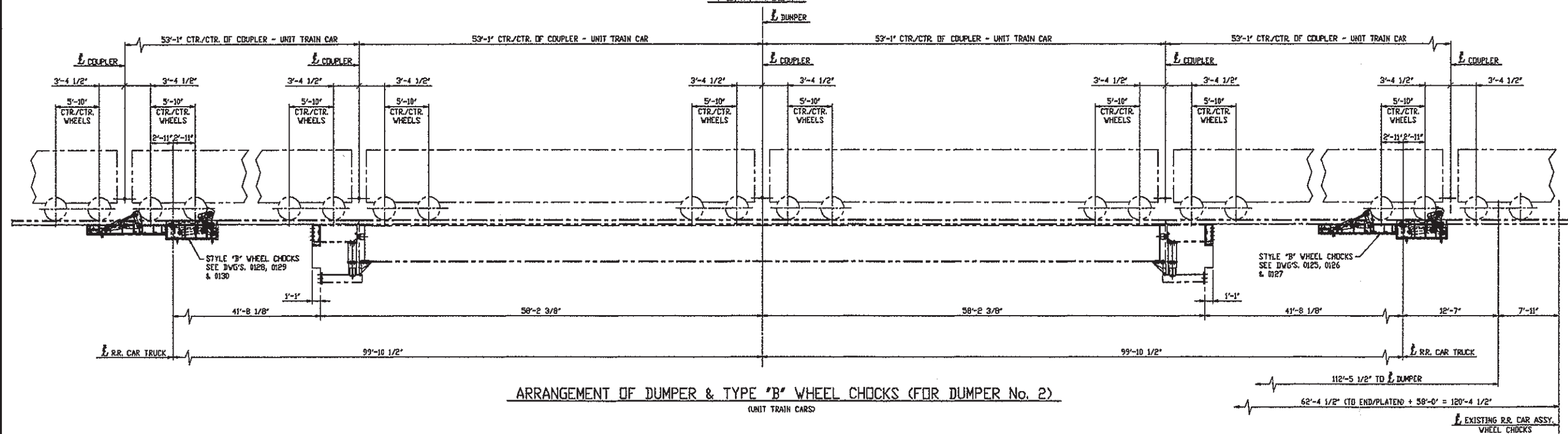
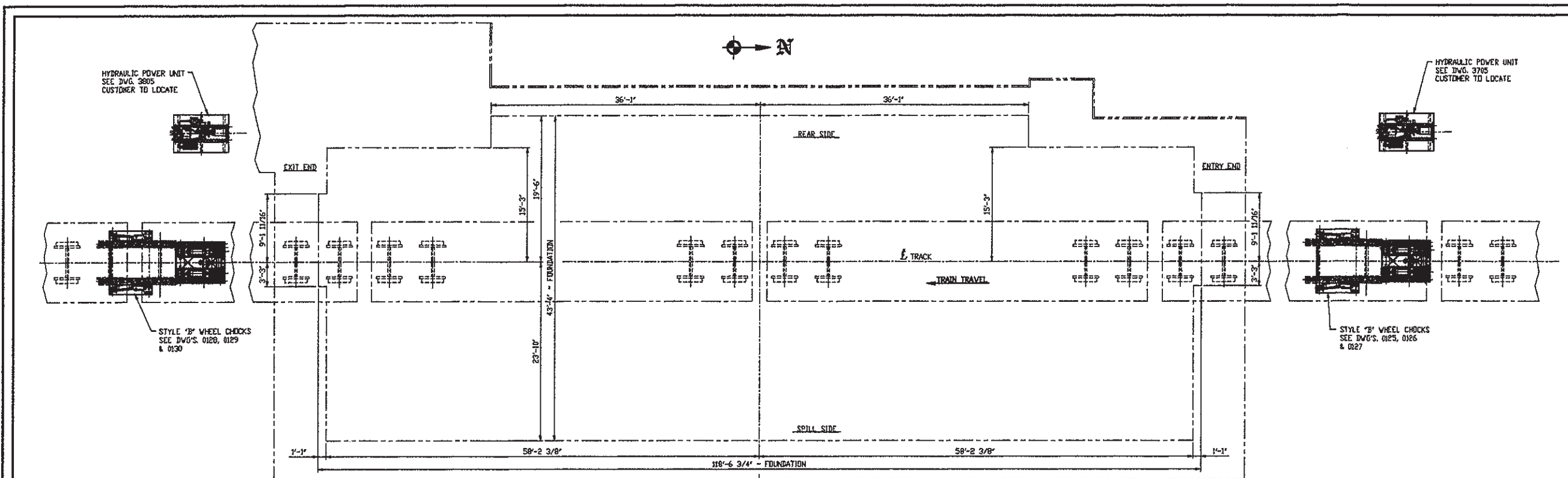
A B C
 KEY PLAN OF SECTIONS A-A
 CENTERLINE OF DUMPER
 LOOKING EAST
 EXIT END (AS SHOWN)
 ENTRY END (OPP HAND)
 DUMPER No. 2


DRAVO REFERENCE DWG.
 M-167205
 M-167207

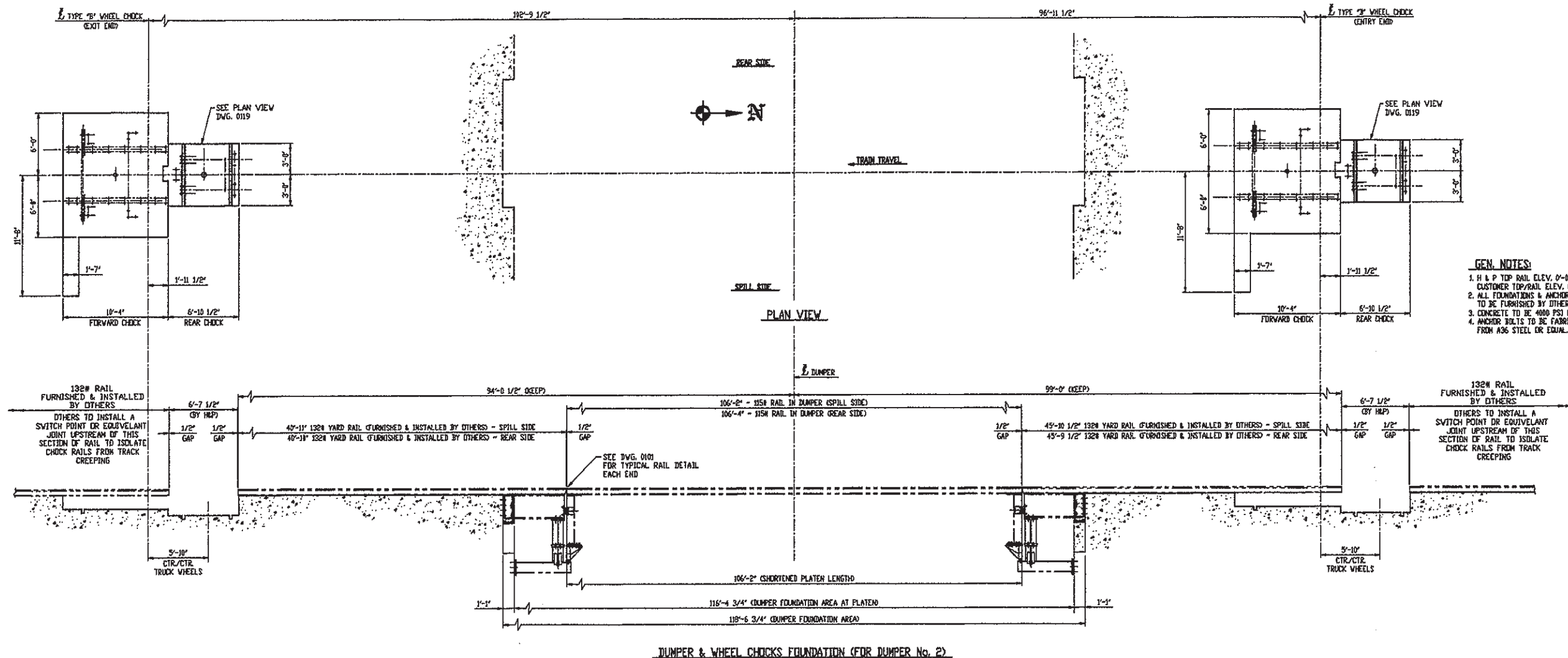
2	RAC	JFM	2/11/10	REVISED SIZES OF BRIDGE BEAM X2A-0308 & BOTTOM BRACKET X2A-0311
1	P.S.	ZS	12/22/09	ADDED DRAVO REF DWG
0	RAC	JFM	10/23/09	ISSUED FOR CONSTRUCTION
B	RAC		10/14/09	ISSUED FOR APPROVAL
A	RAC		9/23/09	ISSUED PRELIMINARY
REV. MADE CHKD. APPR. DATE				DESCRIPTION
THIS DRAWING IS THE PROPERTY OF HEYL & PATTERSON, INC. AND FURNISHED IN CONFIDENCE FOR TEMPORARY USE AND TO BE RETURNED THEREAFTER IF REQUESTED. NOT TO BE COPIED OR DISCLOSED TO OTHERS WITHOUT THE EXPRESS CONSENT OF HEYL & PATTERSON, INC.				DWG. NO. 100243-0108
HEYL & PATTERSON, INC. PITTSBURGH, U.S.A.				REV. 2 SCALE 1/2"=1'-0"
ROTARY RAILROAD CAR DUMPER NO. 2 PLATEN MODIFICATION AND BRIDGE ADDITION ALABAMA STATE DOCKS MOBILE, ALABAMA				DWG. NO. 100243
				CUSTOMER PROJECT NO.

WORK THIS DWG WITH DWG 0109 & 0110.

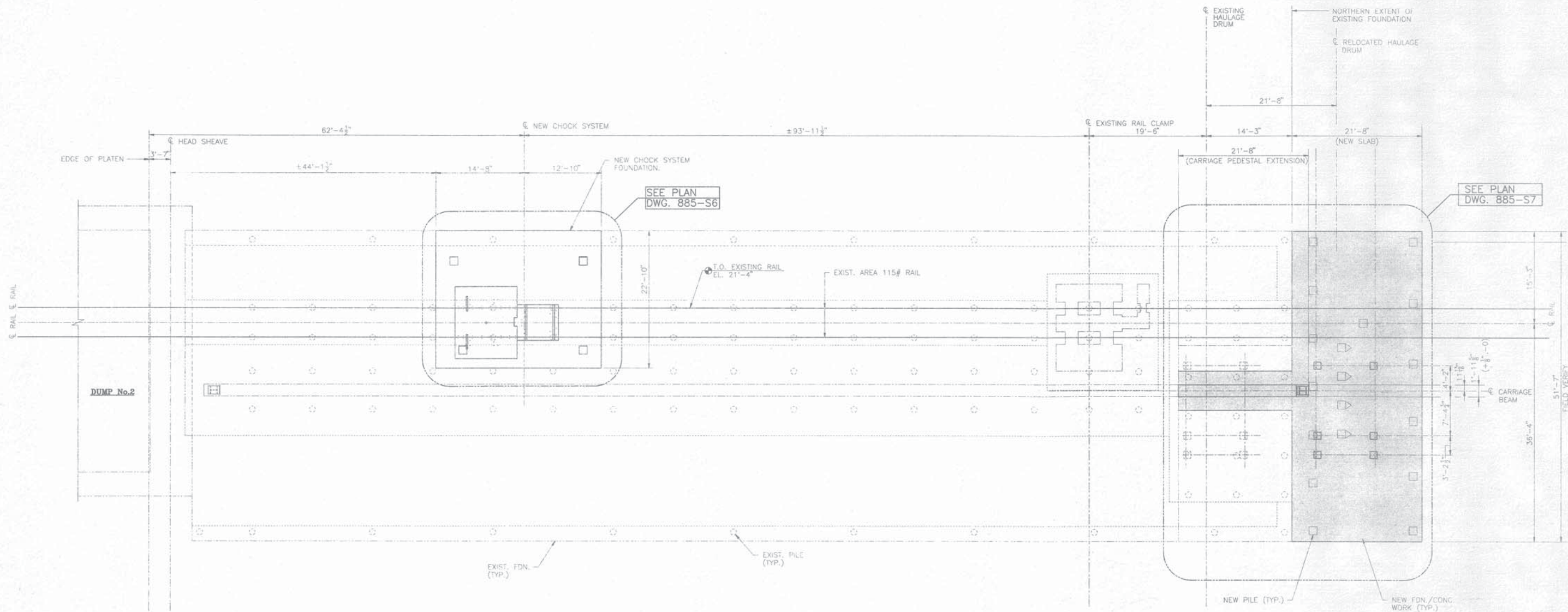
VIEW D-D
 (RAILS NOT SHOWN)



Q	JPC	JFM	3/26	10/23/00	ISSUED THE CONSTRUCTION			
B	JPC			10/14/00	ISSUED THE CUSTOMER APPROVAL			
A	JPC			3/27/00	ISSUED THE CUSTOMER APPROVAL			
REV. MADE [X]CHKD [X]APPR. [X] DATE [X]					DESCRIPTION			
THIS DRAWING IS THE PROPERTY OF HEYL & PATTERSON, INC. AND PUBLISHED IN CONNECTION WITH CONTRACT NO. 100243-0114. IT IS TO BE RETURNED TO THE OFFICE OF RECORDS, 100243-0114, IMMEDIATELY UPON COMPLETION OF THE PROJECT. ANY REPRODUCTION OF THIS DRAWING WITHOUT THE CONSENT OF HEYL & PATTERSON, INC. IS PROHIBITED.						DWG. NO. 100243-0114		REV. 0
 HEYL & PATTERSON, INC. PITTSBURGH, USA						ROUNTY SHALLOO BOX NUMBER NO. 2 ALABAMA STATE HIGHWAY NORTHEAST CORNER 6836-3-0114		HWP PROJECT NO. 100243 CUSTOMER PROJECT NO.



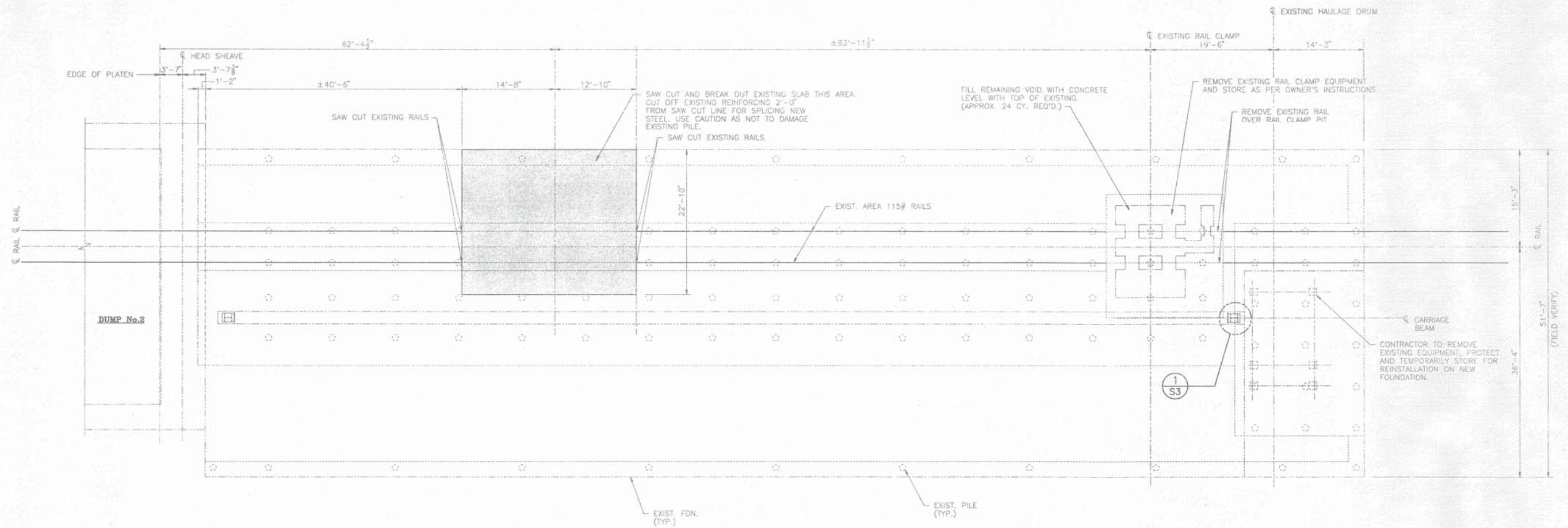
REV.	MADE	CHKD	APPR.	DATE	DESCRIPTION
D	JPC	JFM		10/23/00	ISSUED FOR CONSTRUCTION
C	JPC			10/18/00	
B	JPC			10/14/00	
A	JPC			9/21/00	ISSUED FOR CUSTOMER APPROVAL
					DESCRIPTION
					ROTARY DUMPER AND WHEEL CHOCK FOUNDATION
					100243-0117
					0
					SCALE 1/4"=1'-0"
					DWG. NO.
					100243
					MAP PROJECT NO.
					100243
					CUSTOMER PROJECT NO.



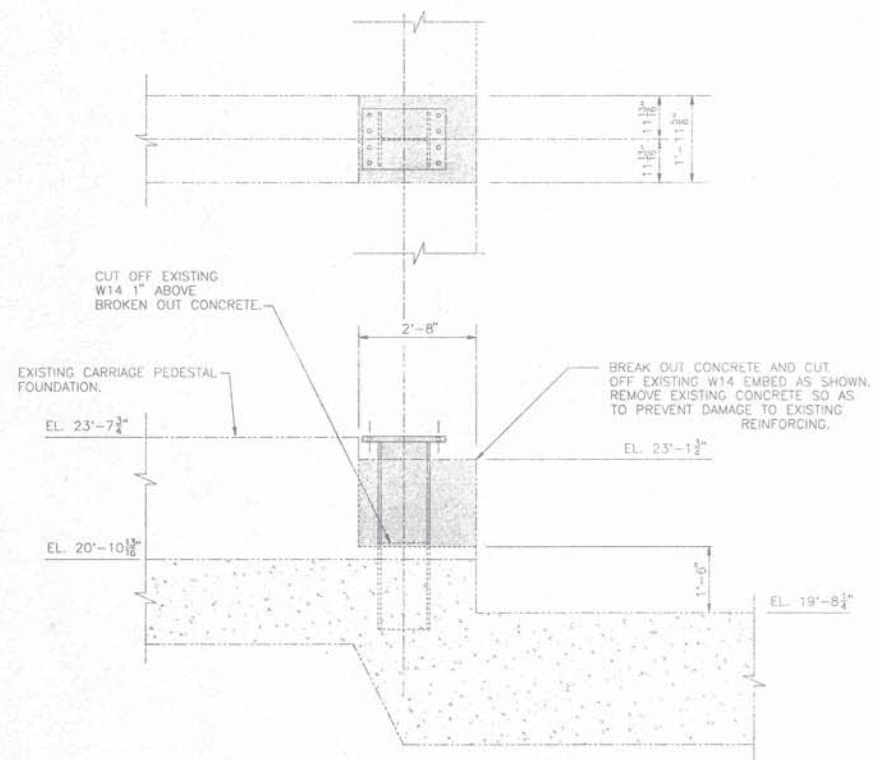
NEW FOUNDATION PLAN
SCALE: 1/8" = 1'-0"

NOTE:
HOLD ALL ANCHOR BOLTS, ANCHOR BOLT EMBEDDED PLATES, ANCHOR BOLT DIMENSIONS PENDING VERIFICATION FROM POSITIONER MANUFACTURER.

1	4/24/96	HOLD ON ANCHOR BOLTS RELEASED	
0	4/15/96	ISSUED FOR CONSTRUCTION	MLM
REV.	DATE	DESCRIPTION	
ALABAMA STATE DOCKS DEPARTMENT			
MOBILE		ALABAMA	
Gottlieb Barnett Bridges		McDUFFIE TERMINALS	
Drawn By: E.L.R.		Date: MAR. 96	
Checked By: T.M.C.		Date: 4/15/96	
Scale: NOTED		Job No. 885	
		Drawing No. 885-S2	
			1 REV.

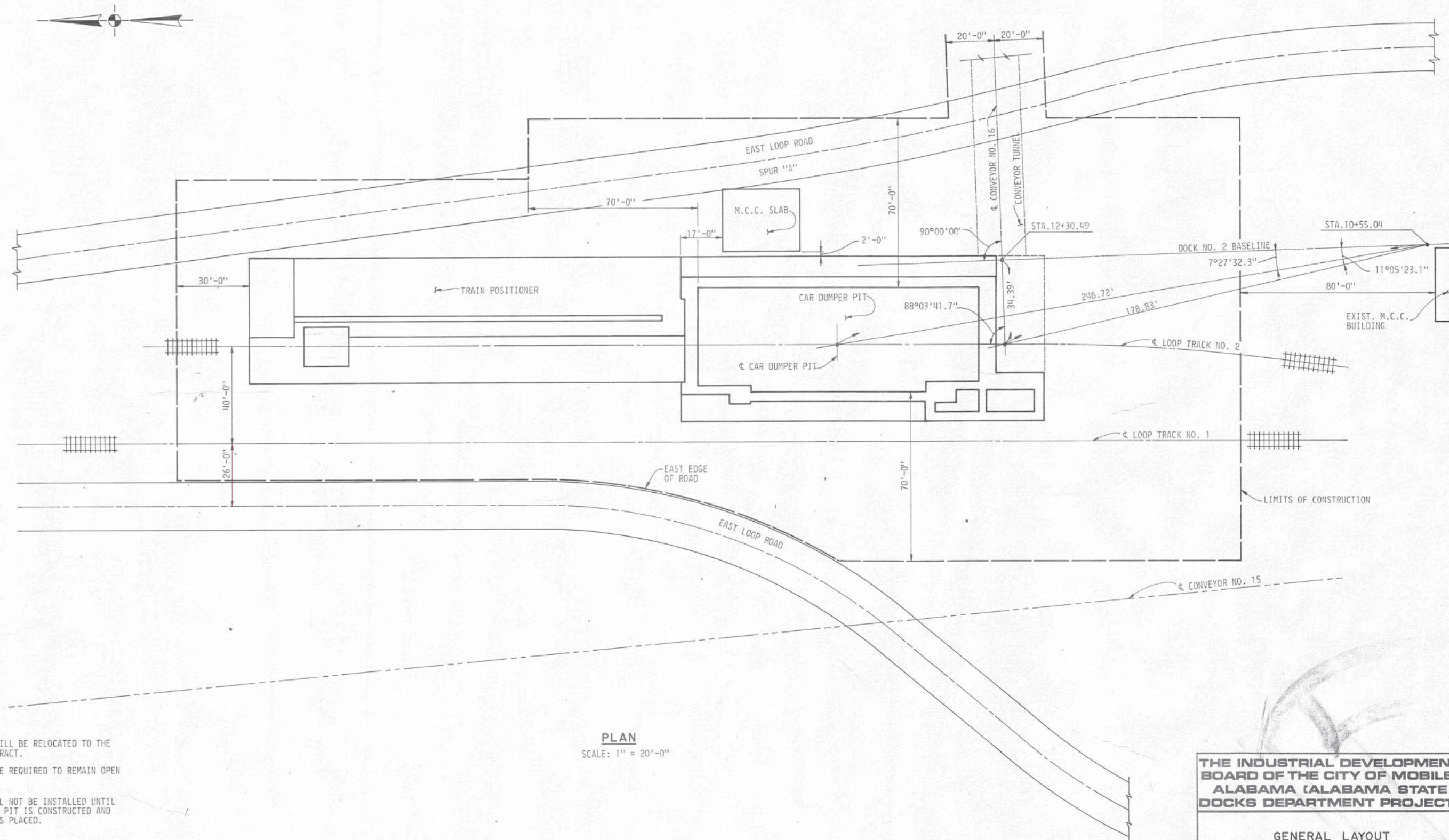


DEMOLITION PLAN
SCALE: 1/8" = 1'-0"



DETAIL 1 S3
1/2" = 1'-0"

1	4/24/96	HOLD ON ANCHOR BOLTS RELEASED	
0	4/15/96	ISSUED FOR CONSTRUCTION	MLM
REV.	DATE	DESCRIPTION	
ALABAMA STATE DOCKS DEPARTMENT MOBILE ALABAMA			
Gottlieb Barnett Bridges MOBILE ALABAMA		McDUFFIE TERMINALS CAR POSITIONER FOUNDATION AT DUMPER No. 2 DEMOLITION PLAN	
Drawn By: C.L.R.	Date: APR. 96		
Checked By: T.M.C.	Date: 4/15/96		
Scale: NOTED	Job No. 885	Drawing No. 885-S3	1 REV.



NOTES:

- ① THE EAST LOOP ROAD WILL BE RELOCATED TO THE EAST IN ANOTHER CONTRACT.
- ② ONE LOOP ROAD WILL BE REQUIRED TO REMAIN OPEN AT ALL TIMES.
- ③ LOOP TRACK NO. 1 WILL NOT BE INSTALLED UNTIL AFTER THE CAR DUMPER PIT IS CONSTRUCTED AND COMPACTED BACKFILL IS PLACED.

PLAN

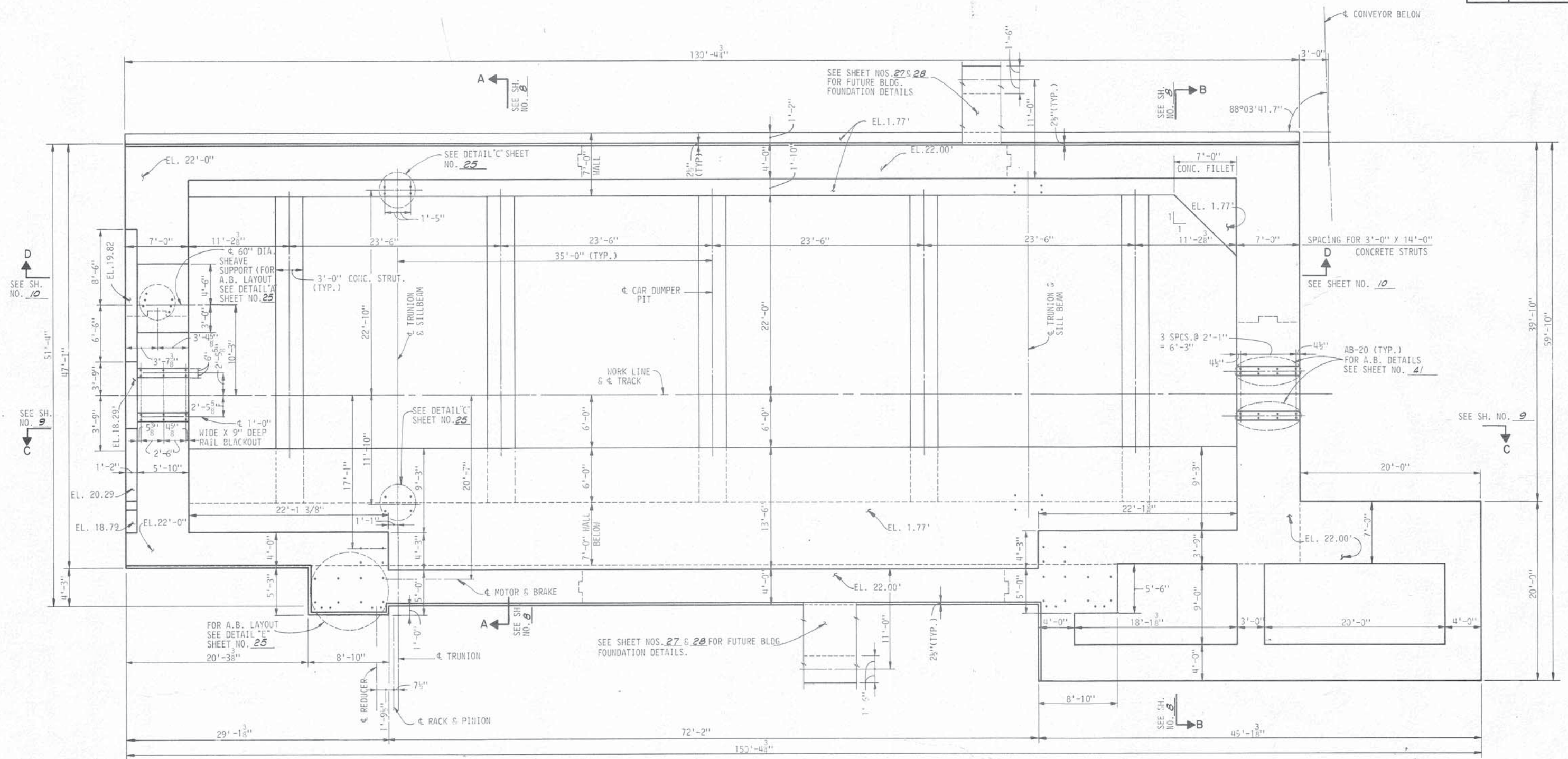
SCALE: 1" = 20'-0"

THE INDUSTRIAL DEVELOPMENT
BOARD OF THE CITY OF MOBILE,
ALABAMA (ALABAMA STATE
DOCKS DEPARTMENT PROJECT)

GENERAL LAYOUT

DAVID VOLKERT & ASSOCIATES
CONSULTING ENGINEERS

DESIGNED	H.S.W.	DETAILED	V.L.P.	TRACED	M.H.W.
CHECKED		CHECKED		CHECKED	
DATE		DATE		DATE	



PLAN OF TOP SHOWING CONCRETE DIMENSIONS

SCALE: 3/16" = 1'-0"

NOTES:

- ① SEE SHEET NO. 1 FOR GENERAL NOTES
- ② SEE SHEET NO. 26 FOR CONST. JT. DETAILS.
- ③ SEE SHEET NO. 9 FOR POURING NOTES
- ④ SEE SHEET NO. 27 FOR FOUNDATION OF FUTURE BLDG. PERIMETER RUNWAY AND HANDRAIL DETAILS.
- ⑤ SEE SHEET NOS. 25 & 41 FOR ANCHOR BOLT AND BEARING DETAILS.
- ⑥ SEE SHEET NO. 30 FOR MOTOR CONTROL BLDG. DETAILS.

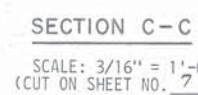
THE INDUSTRIAL DEVELOPMENT
BOARD OF THE CITY OF MOBILE,
ALABAMA (ALABAMA STATE
DOCKS DEPARTMENT PROJECT)

ROTARY CAR DUMPER PIT
PLAN OF TOP

DAVID VOLKERT & ASSOCIATES
CONSULTING ENGINEERS

DESIGNED H.S.W.	DETAILED J.W.C.	TRACED J.W.C.
CHECKED	CHECKED	CHECKED
DATE		

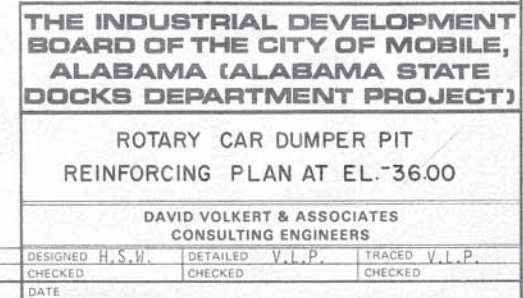
REVISIONS



- ①. ALL FLOOR SLAB POURS SHALL BE COMPLETED BEFORE COMMENCING WALL POURS.
- ②. WALL POURS SHALL PROCEED IN THE SAME SEQUENCE AS THE FLOOR SLAB POURS.
- ③. WALL POURS SHALL NEVER BE MORE THAN ONE HORIZONTAL CONSTRUCTION JOINT ABOVE ADJACENT WALL POURS.
- ④. THE CONTRACTOR MAY SUBMIT AN ALTERNATE POURING SCHEME SHOWING ALL MODIFICATIONS TO REINFORCING AND OTHER AFFECTED DETAILS FOR THE ENGINEER'S APPROVAL.
- ⑤. CONVEYOR SUPPORT BEAMS ARE NOT IN THIS CONTRACT.

DAVID VOLKERT & ASSOCIATES
CONSULTING ENGINEERS

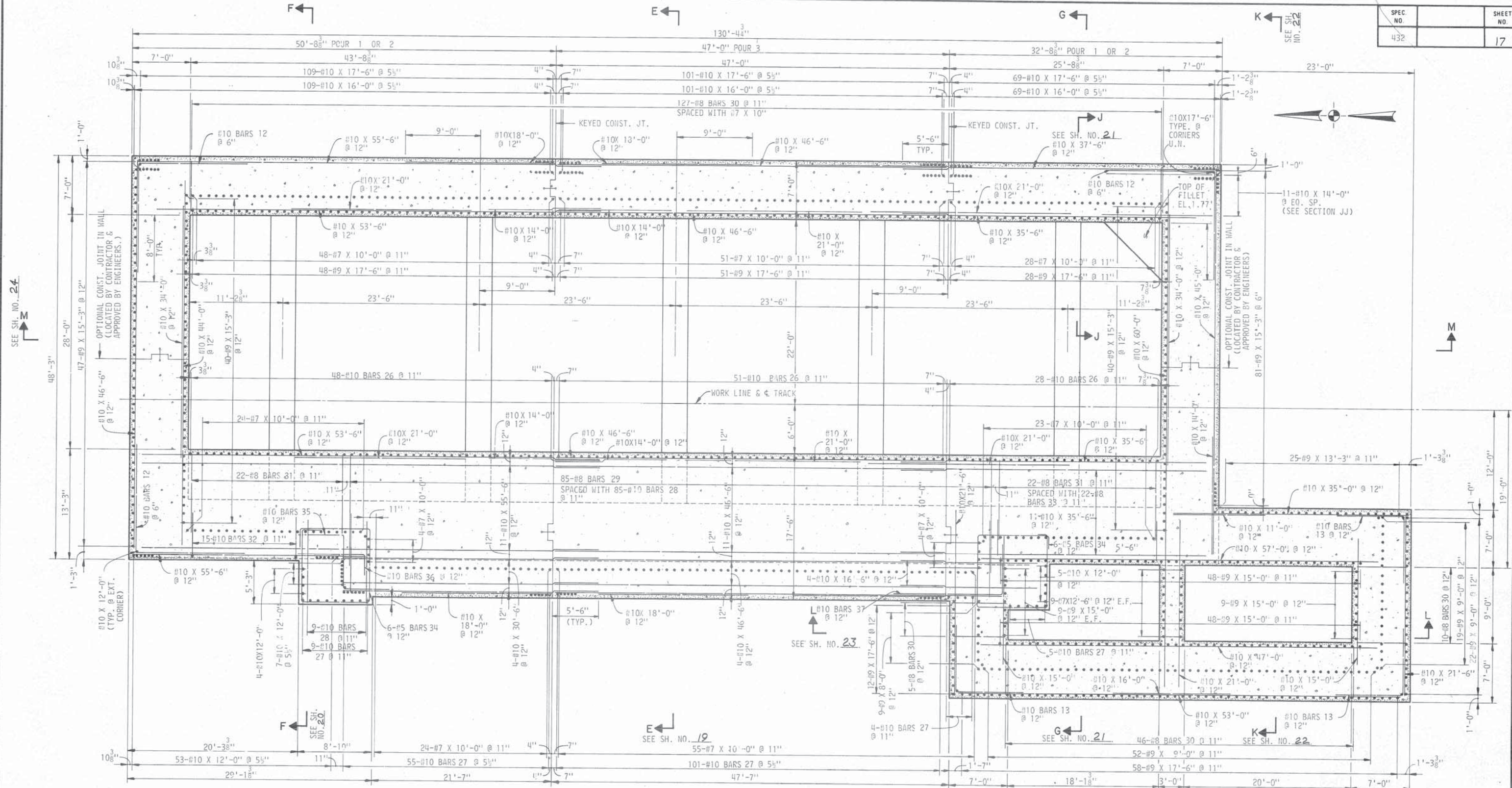
		CONSULTING ENGINEERS		
		DESIGNED H.S.W.	DETAILED J.W.C.	TRACED J.W.C.
		CHECKED	CHECKED	CHECKED
REVISIONS		DATE		



NOTES:

1. BOTTOM REINF. IS SPACED DIRECTLY BELOW TOP REINF. WORK THIS SHEET WITH SECTION SHEETS.
2. BARS LONGER THAN 60'-0" MAY BE OBTAINED BY SPLICING 2 BARS WITH A 5'-6" LAP SPLICE
3. SEE SHEET NO. 1 FOR GENERAL NOTES.
4. SEE SHEET NO. 26 FOR CONST. JT. DETAILS.
5. SEE SHEET NO. 9 FOR POURING NOTES.

SEE SH. NO. 21



PLAN AT ELEVATION 1.77'

SCALE: 3/16" = 1'-0"
(REIN. SHOWN IS REIN. OCCURRING IMMEDIATELY
BELOW CONST. JT. AT EL. 1.77')

NOTES:

- SEE SHEET NO. 1 FOR GENERAL NOTES.
- SEE SHEET NO. 26 FOR CONSTRUCTION JT. DETAILS.
- SEE SHEET NO. 9 FOR POURING NOTES.

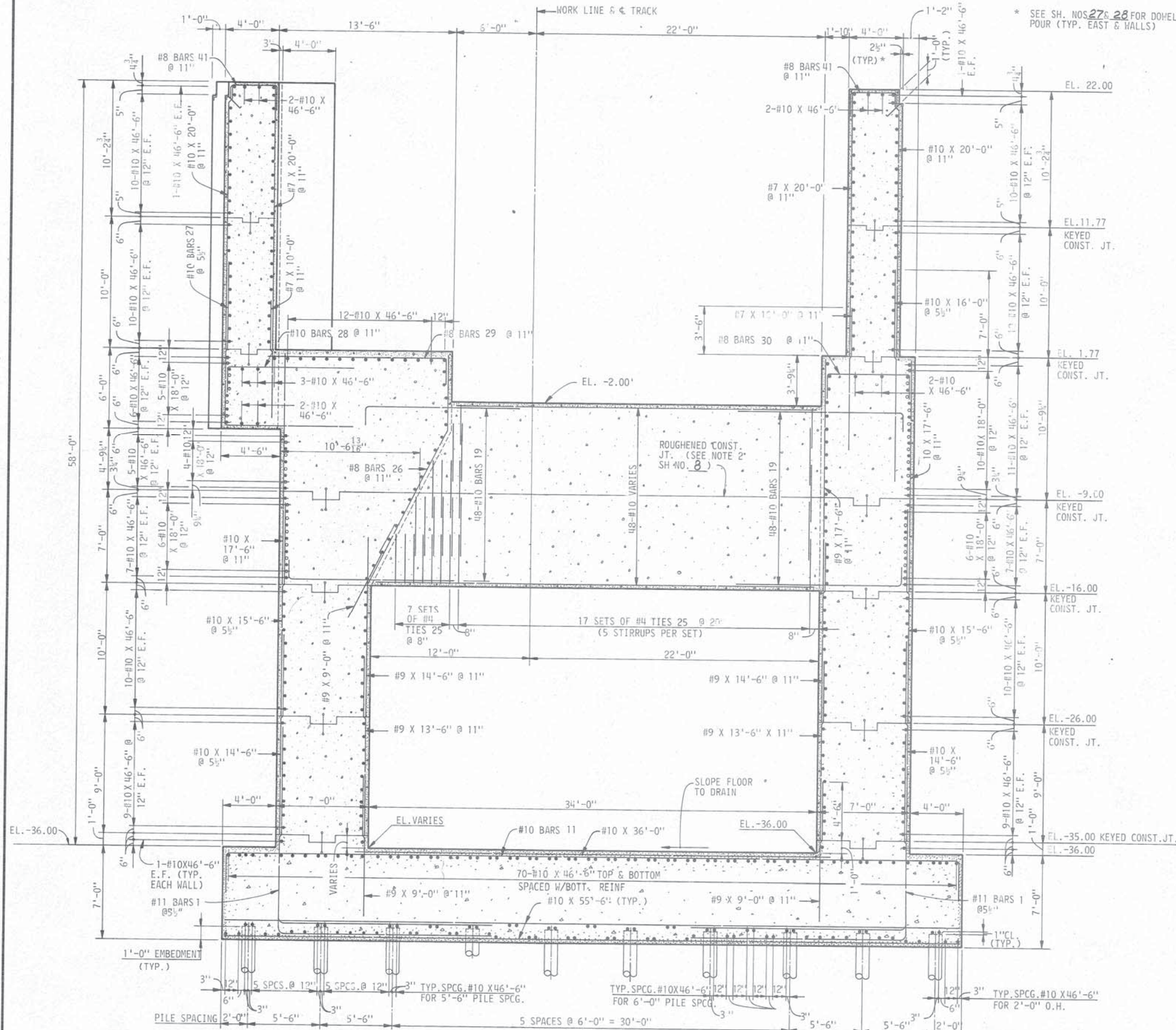
**THE INDUSTRIAL DEVELOPMENT
BOARD OF THE CITY OF MOBILE,
ALABAMA (ALABAMA STATE
DOCKS DEPARTMENT PROJECT)**

**ROTARY CAR DUMPER PIT
REINFORCING PLAN AT EL. 1.77**

**DAVID VOLKERT & ASSOCIATES
CONSULTING ENGINEERS**

DESIGNED H.S.W.	DETAILED J.W.C.	TRACED J.W.C.
CHECKED	CHECKED	CHECKED
DATE		

REVISIONS



* SEE SH. NOS. 27 & 28 FOR DOWELS PLACED W/HALL POUR (TYP. EAST & WALLS)

NOTES:

- ① SEE SHEET NO. 1 FOR GENERAL NOTES.
- ② SEE SHEET NOS. 17 & 42 FOR PILE LAYOUT AND DETAILS.
- ③ SEE SHEET NO. 26 FOR CONSTRUCTION JOINT DETAILS.
- ④ SEE SHEET NO. 9 FOR POURING NOTES.
- ⑤ SEE SHEET NOS. 27 & 28 FOR FOUNDATION OF FUTURE BLDG. AND PERIMETER RUNWAY AND HANDRAIL DETAILS.
- ⑥ SEE SHEET NOS. 25 & 41 FOR ANCHOR BOLTS & BEARING DETAILS.

THE INDUSTRIAL DEVELOPMENT
BOARD OF THE CITY OF MOBILE,
ALABAMA (ALABAMA STATE
DOCKS DEPARTMENT PROJECT)

ROTARY CAR DUMPER PIT
SECTION

DAVID VOLKERT & ASSOCIATES
CONSULTING ENGINEERS

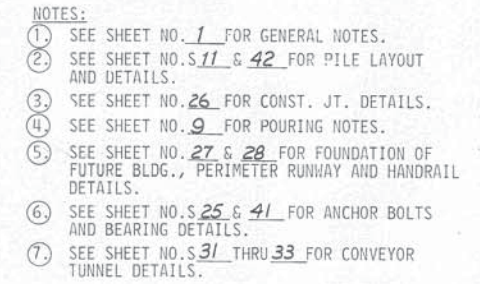
DESIGNED H.S.W.	DETAILED G.G.M.	TRACED J.W.C.
CHECKED	CHECKED	CHECKED
DATE		

REVISIONS

SECTION E-E

SCALE: 1/4" = 1'-0"

(CUT ON SHEET NO'S 17 THRU 18)

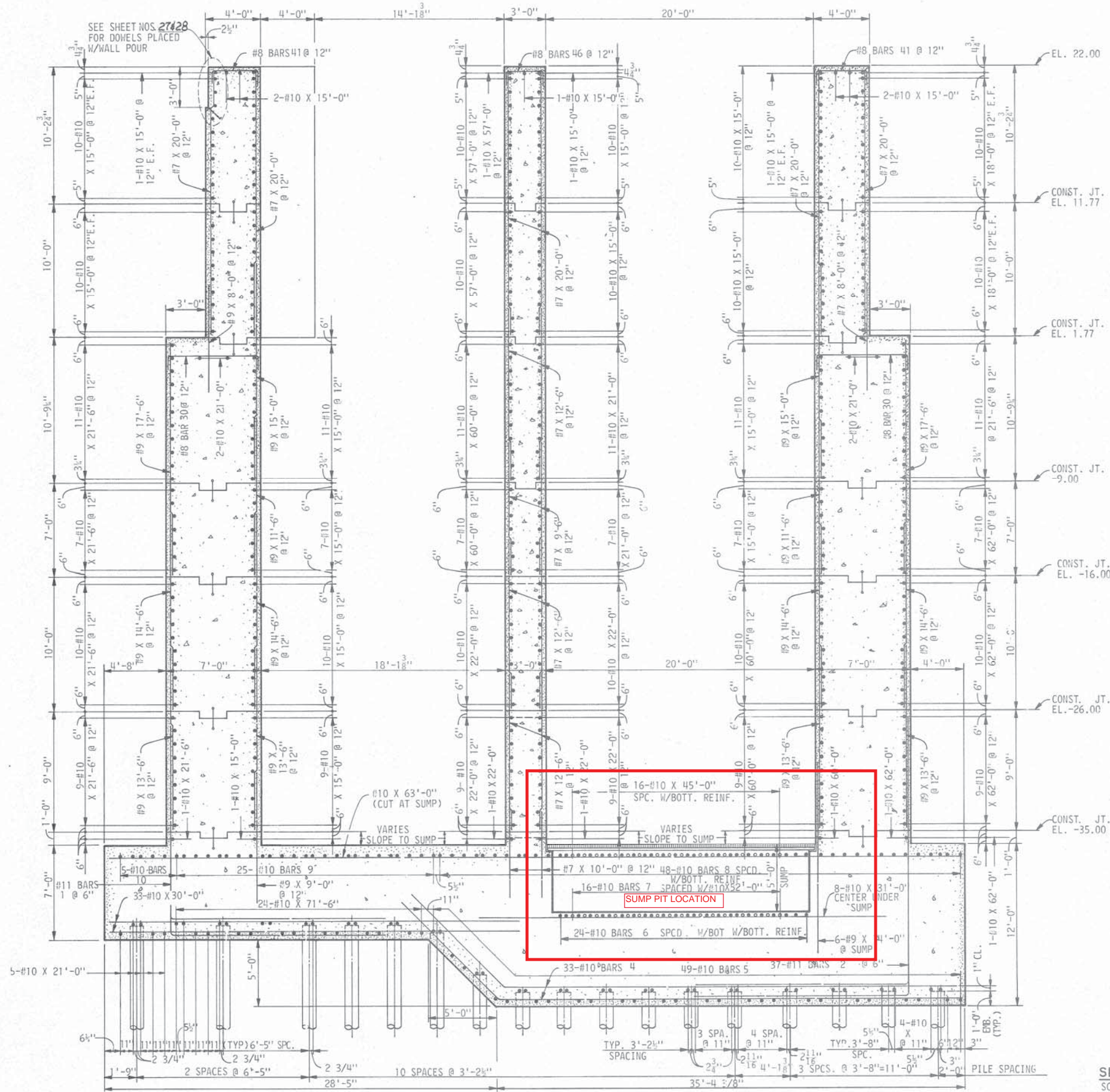


**THE INDUSTRIAL DEVELOPMENT
BOARD OF THE CITY OF MOBILE,
ALABAMA (ALABAMA STATE
DOCKS DEPARTMENT PROJECT)**

ROTARY CAR DUMPER PIT
SECTION

DAVID VOLKERT & ASSOCIATES
CONSULTING ENGINEERS

DESIGNED	H.S.W.	DETAILED	J.T.S.	TRACED	J.T.S.
CHECKED		CHECKED		CHECKED	
DATE					



- NOTES:
- SEE SHEET NO. 1 FOR GENERAL NOTES.
 - SEE SHEET NO'S 11 & 12 FOR PILE LAYOUT & DETAILS.
 - SEE SHEET NO. 26 FOR CONST. JT. DETAILS.
 - SEE SHEET NO. 9 FOR POURING NOTES.
 - SEE SHEET NO'S 27 & 28 FOR FOUNDATION OF FUTURE BLDG., PERIMETER RUNWAY AND HANDRAIL DETAILS.
 - SEE SHEET NO'S 25 & 41 FOR ANCHOR BOLTS & BEARING DETAILS.

SECTION L-L
SCALE: 1/4" = 1'-0"
(CUT ON SHEET NO'S 11 THRU 18)

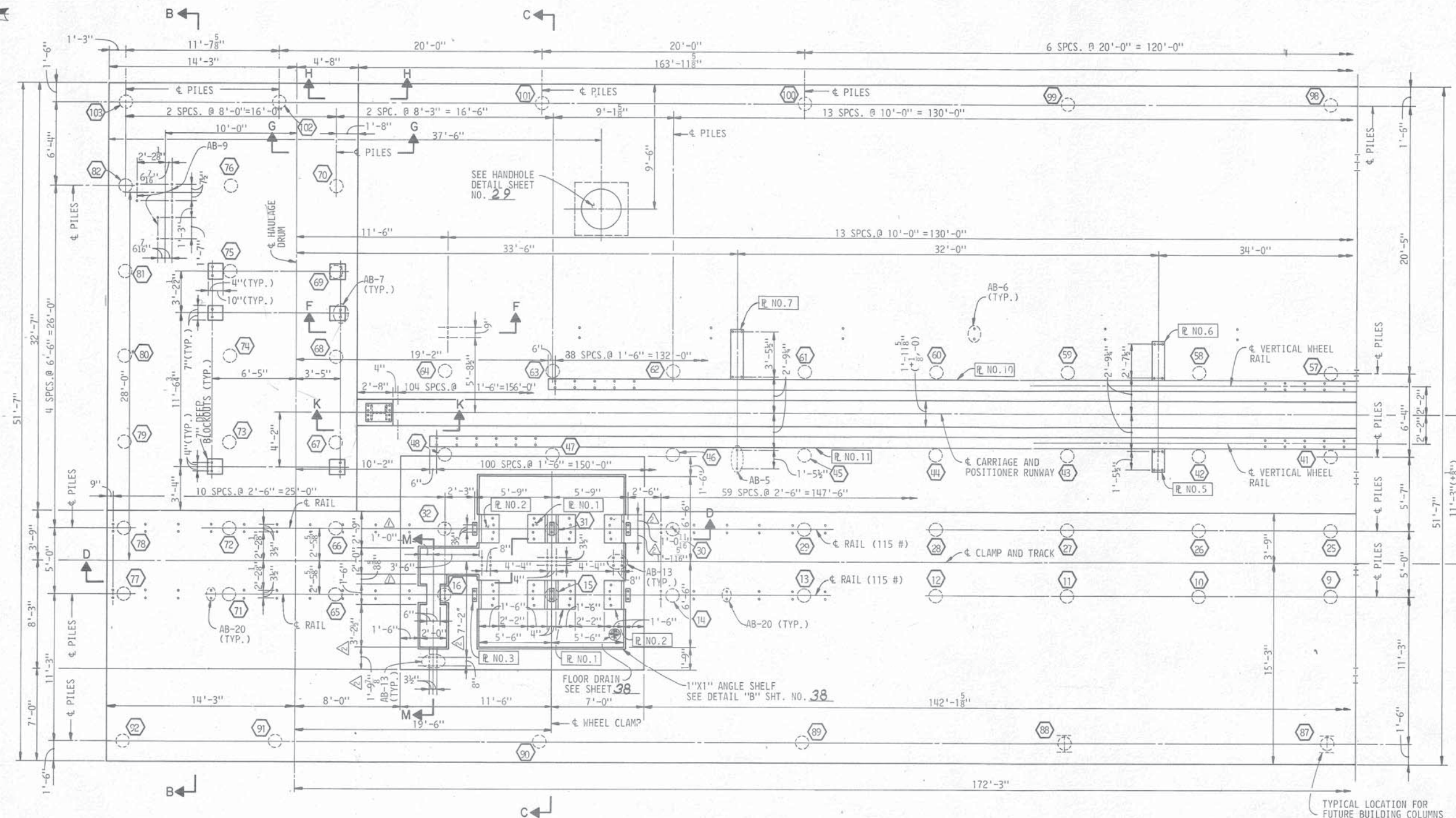
THE INDUSTRIAL DEVELOPMENT
BOARD OF THE CITY OF MOBILE,
ALABAMA (ALABAMA STATE
DOCKS DEPARTMENT PROJECT)

ROTARY CAR DUMPER PIT
SECTION

DAVID VOLKERT & ASSOCIATES
CONSULTING ENGINEERS

DESIGNED H.S.W.	DETAILED G.G.M.	TRACED J.W.C.
CHECKED	CHECKED	CHECKED
DATE		

REVISIONS



TYPICAL LOCATION FOR
FUTURE BUILDING COLUMNS
SHALL BE DIRECTLY OVER PILES.

XX - PILE NUMBER

PLAN
SCALE: 1/4" = 1'-0"

NOTES:

- NOTES:
- ①. POSITIONER RAILS WILL BE SUPPLIED AND INSTALLED IN ANOTHER CONTRACT.
 - ②. SEE SHEET NOS. 36, 37 & 38 FOR SECTIONS AND DETAILS.
 - ③. SEE SHEET NOS. 39 & 40 FOR PLATE DETAILS.
 - ④. SEE SHEET NO. 42 FOR PILE SCHEDULE & DETAIL.
 - ⑤. SEE SHEET NO. 40 FOR 115 LB. RAIL PLAN & DETAILS.
 - ⑥. SEE SHEET NO. 1 FOR GENERAL NOTES.

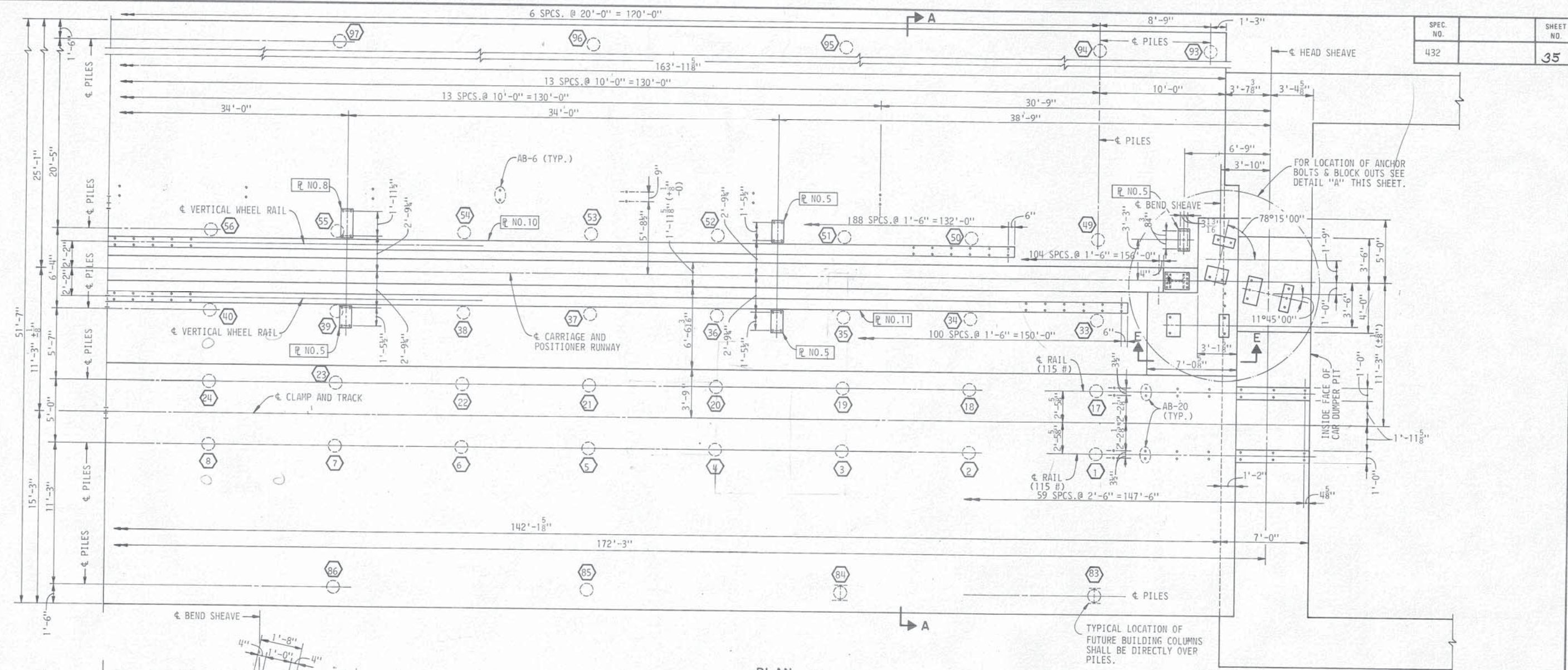
**THE INDUSTRIAL DEVELOPMENT
BOARD OF THE CITY OF MOBILE,
ALABAMA (ALABAMA STATE
DOCKS DEPARTMENT PROJECT)**

TRAIN POSITIONER GENERAL LAYOUT

SHEET 1 OF 2

DAVID VOLKERT & ASSOCIATES
CONSULTING ENGINEERS

7/20/82 REV. DIMENSIONS		P.K.J.	DESIGNED	P.K.J.	DETAILED	J.W.C.	TRACED	J.W.C.
4/26/82 REV. DIMENSIONS		P.K.J.	CHECKED	H.S.W.	CHECKED	P.K.J.	CHECKED	P.K.J.
REVISIONS			DATE					



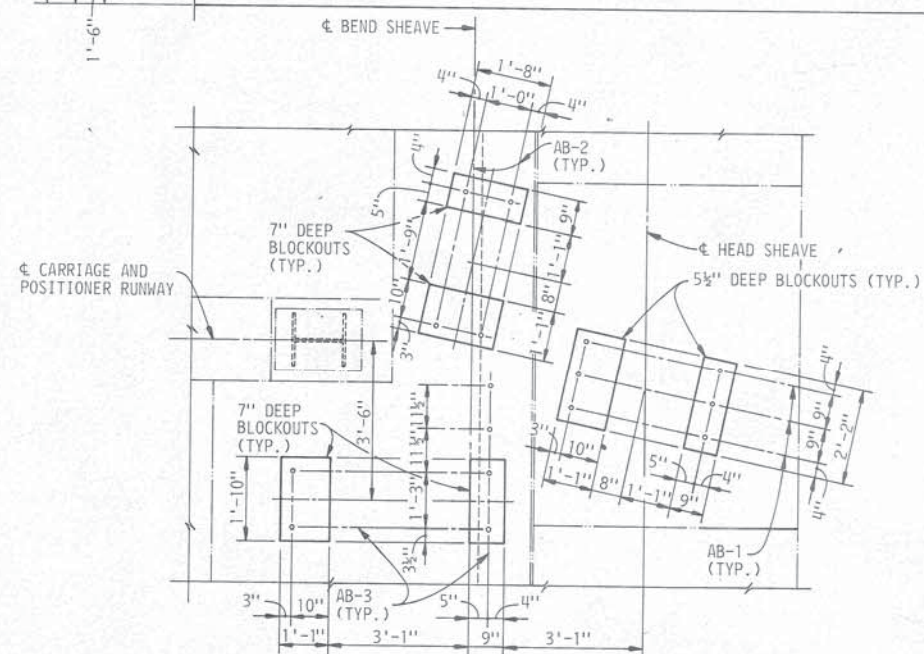
PLAN

SCALE: $\frac{1}{4}" = 1'-0"$

NOTES:

- ① POSITIONER RAILS WILL BE SUPPLIED AND INSTALLED IN ANOTHER CONTRACT.
- ② SEE SHEET NOS. 36, 37 & 38 FOR SECTIONS AND DETAILS.
- ③ SEE SHEET NOS. 39 & 40 FOR PLATE DETAILS.
- ④ SEE SHEET NO. 42 FOR PILE SCHEDULE & DETAIL.
- ⑤ SEE SHEET NO. 40 FOR 115 LB. RAIL PLAN & DETAILS.
- ⑥ SEE SHEET NO. 1 FOR GENERAL NOTES.

XX - PILE NUMBER



DETAIL "A"

SCALE: $\frac{1}{2}'' = 1' - 0''$

**THE INDUSTRIAL DEVELOPMENT
BOARD OF THE CITY OF MOBILE,
ALABAMA (ALABAMA STATE
DOCKS DEPARTMENT PROJECT)**

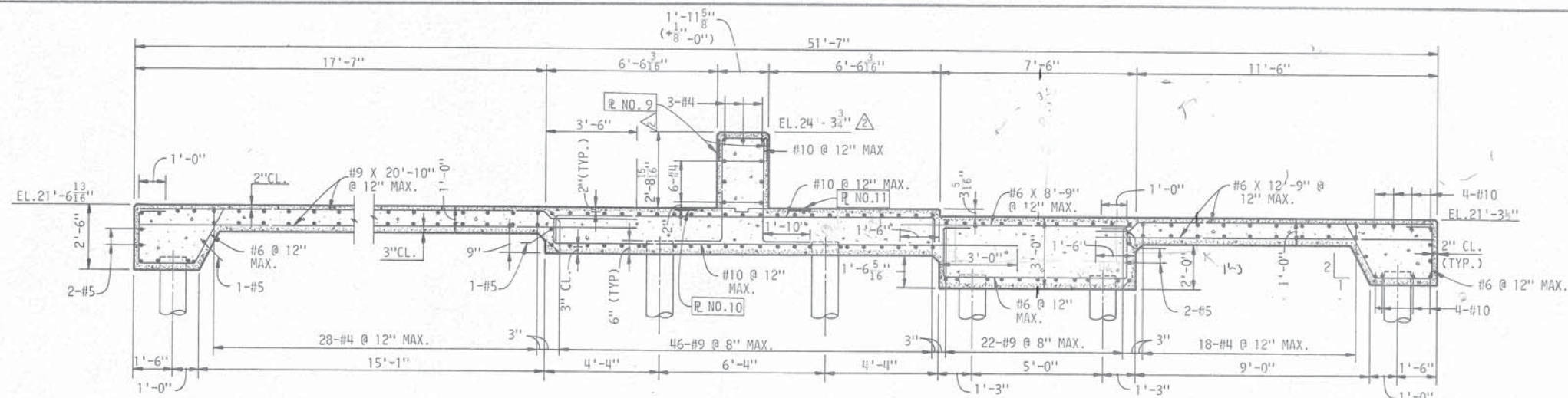
TRAIN POSITIONER GENERAL LAYOUT

SHEET 2 OF 2

DAVID VOLKERT & ASSOCIATES
CONSULTING ENGINEERS

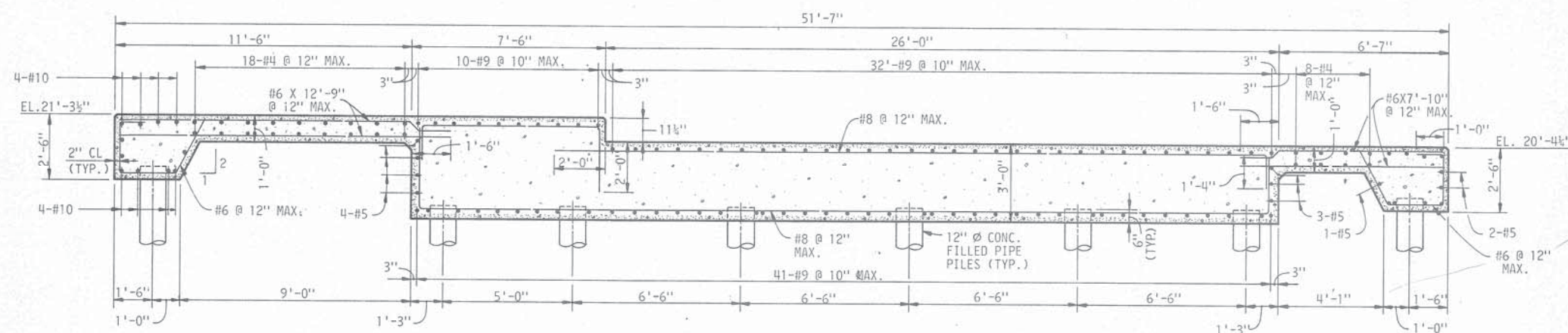
DESIGNED	P.K.J.	DETAILED	J.W.C.	TRACED	J.W.C.
CHECKED		CHECKED	P.K.J.	CHECKED	P.K.J.
DATE					

REVISIONS



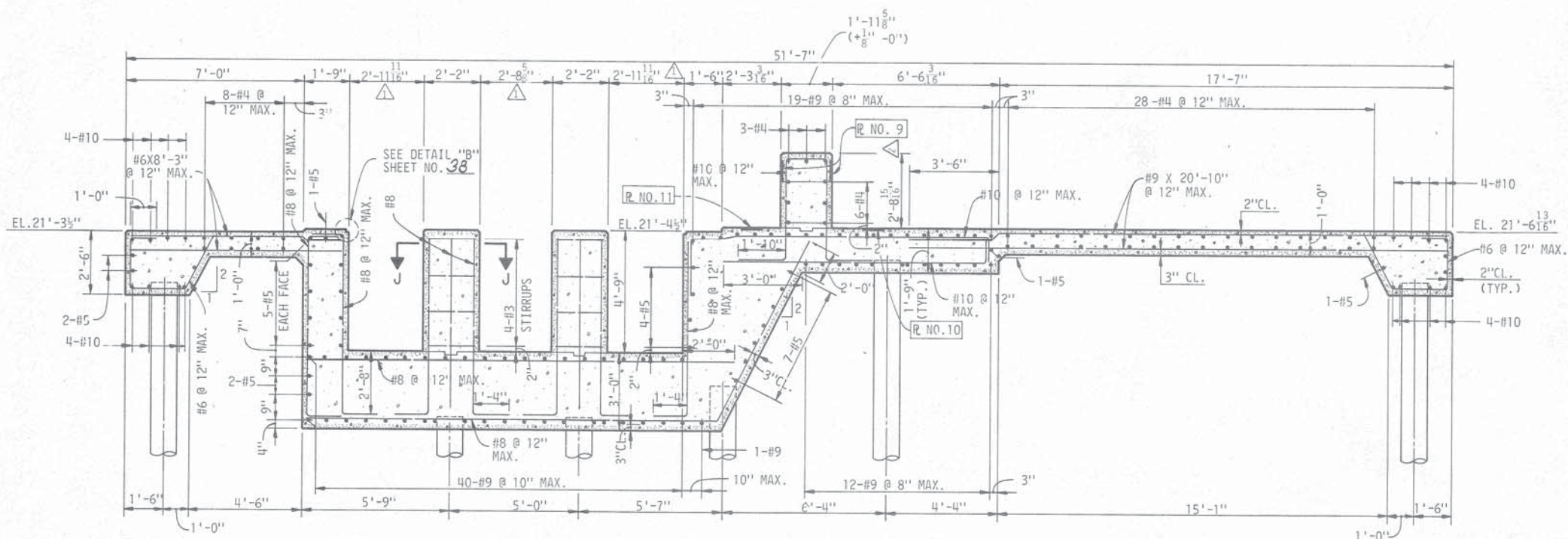
SECTION A-A

SCALE: 3/8" = 1'-0"



SECTION B-B

SCALE: 3/8" = 1'-0"



SECTION C-C

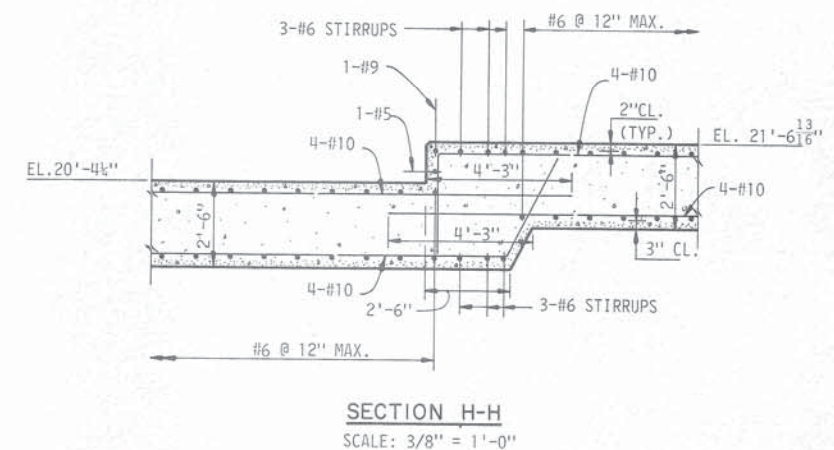
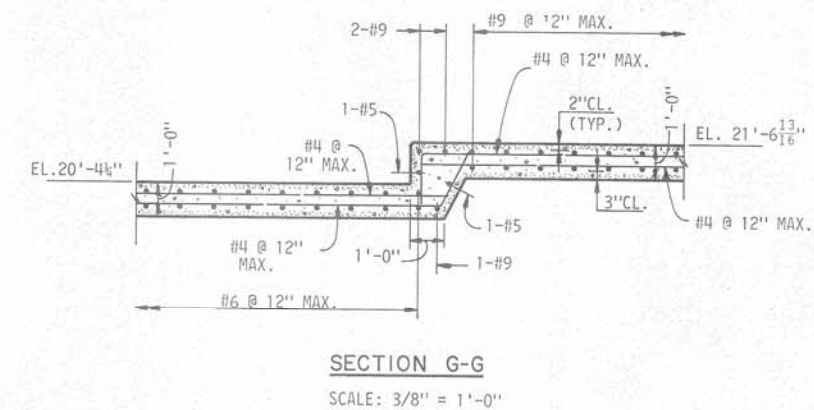
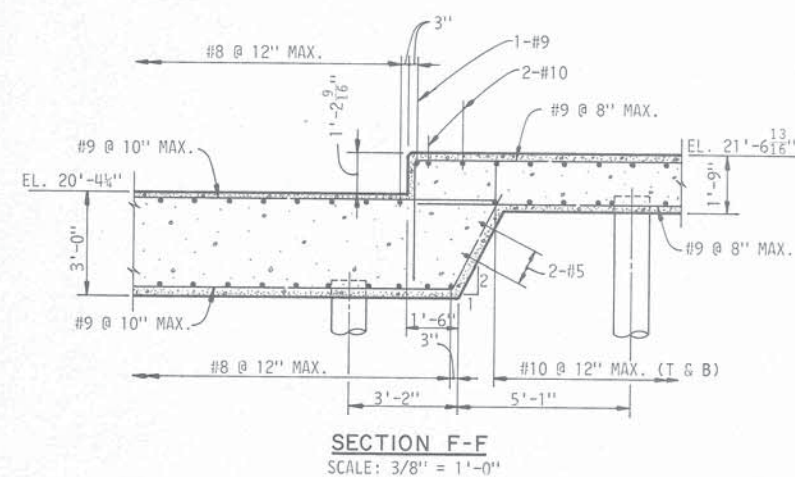
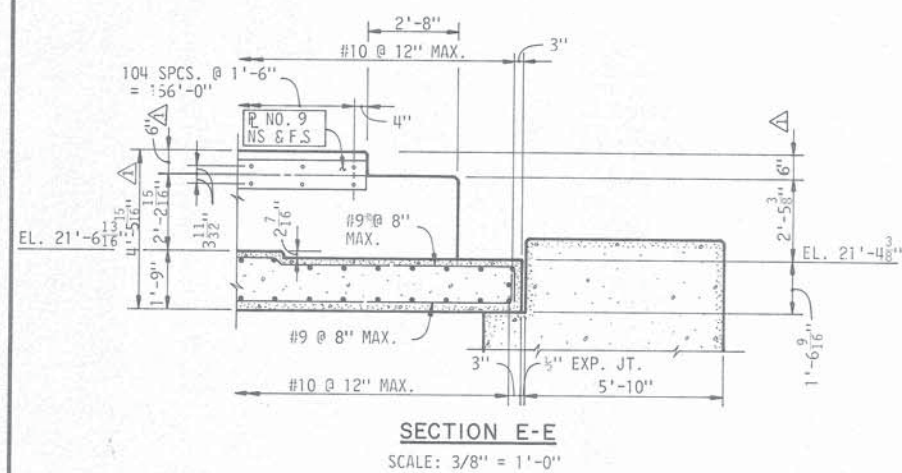
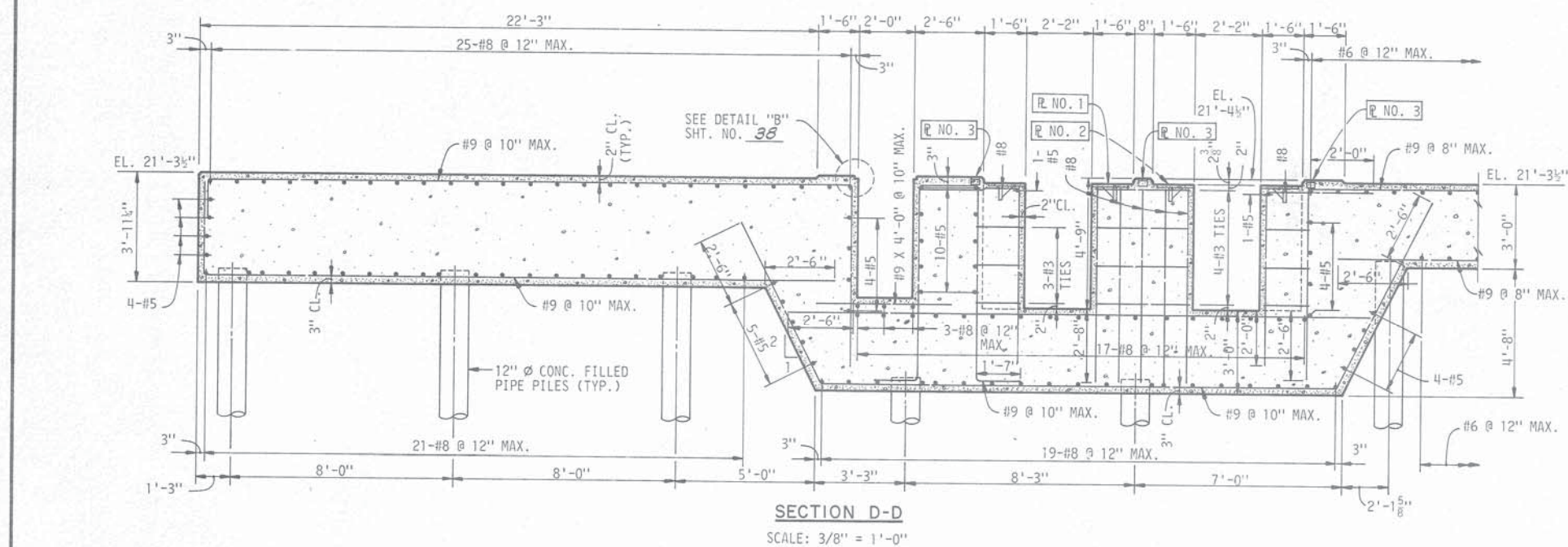
SCALE: 3/8" = 1'-0"

THE INDUSTRIAL DEVELOPMENT
BOARD OF THE CITY OF MOBILE,
ALABAMA (ALABAMA STATE
DOCKS DEPARTMENT PROJECT)

TRAIN POSITIONER
SECTIONS

DAVID VOLKERT & ASSOCIATES
CONSULTING ENGINEERS


DESIGNED	P.K.J.	CHECKED	H.S.W.	DATE
7/20/82 REV. DIMENSIONS	P.K.J.	7/20/82 REV. DIMENSIONS	P.K.J.	
REVISIONS				



**THE INDUSTRIAL DEVELOPMENT
BOARD OF THE CITY OF MOBILE,
ALABAMA (ALABAMA STATE
DOCKS DEPARTMENT PROJECT)**

TRAIN POSITIONER SECTIONS

DAVID VOLKERT & ASSOCIATES
CONSULTING ENGINEERS

	10/11/82 REV. DIMENSIONS	P.K.J.	DESIGNED P.K.J.	DETAILED J.W.C.	TRACED J.W.C.
	REVISIONS		CHECKED H.S.W.	CHECKED P.K.J.	CHECKED P.K.J.