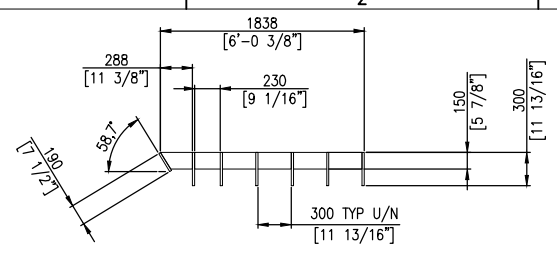
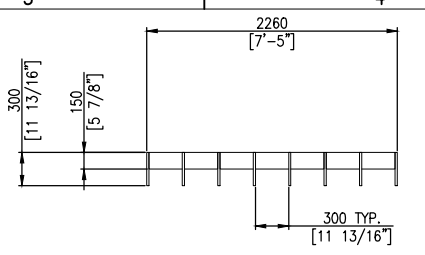


1 2 3 4 5 6 7 8

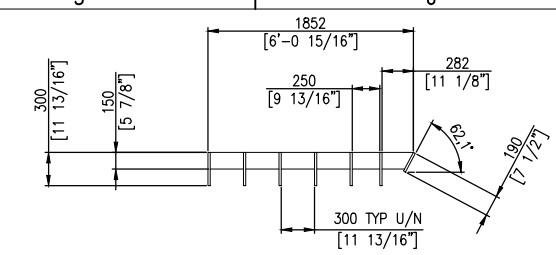
A
B
C
D
E
F
G



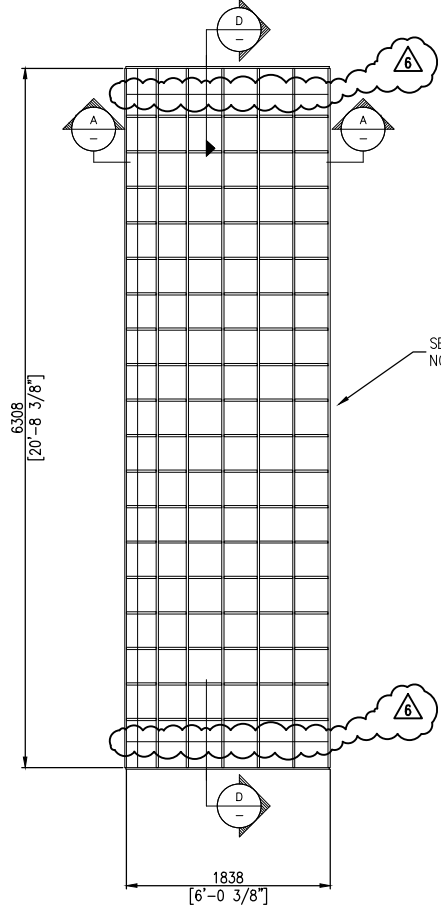
SECTION A
SCALE 1 : 25



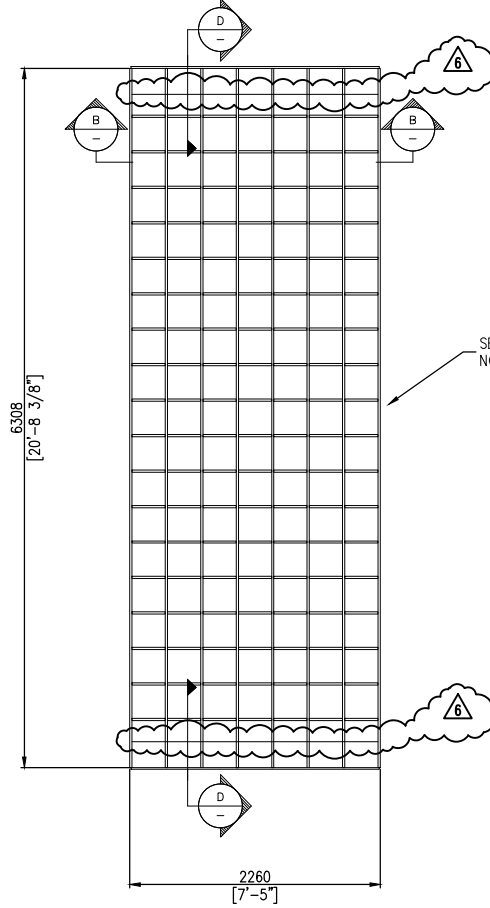
SECTION B
SCALE 1 : 25



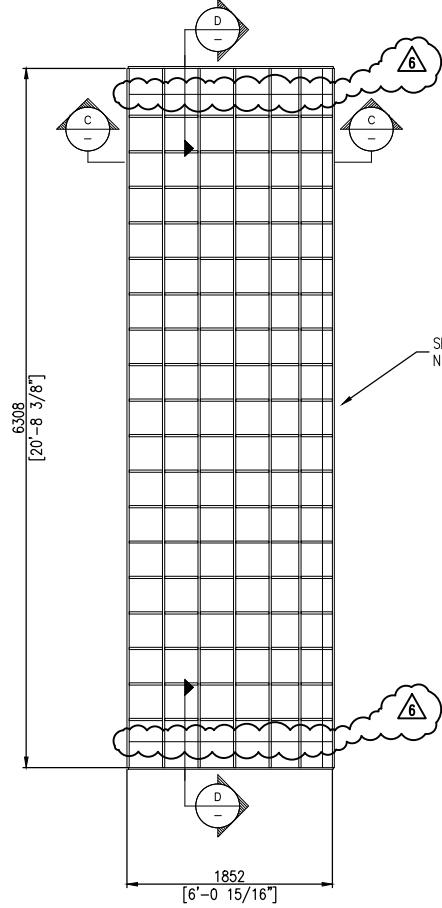
SECTION C
SCALE 1 : 25



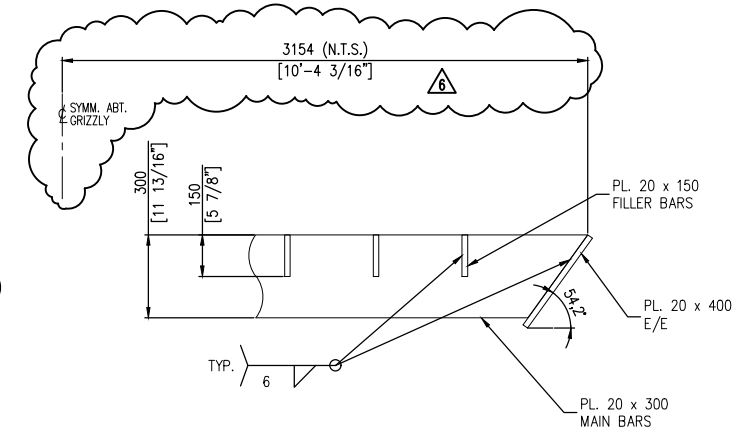
TYPE # 1 - PLAN
(4 REQUIRED)



TYPE # 2 - PLAN
(8 REQUIRED)



TYPE # 3 - PLAN
(4 REQUIRED)



SECTION D
SCALE 1 : 10

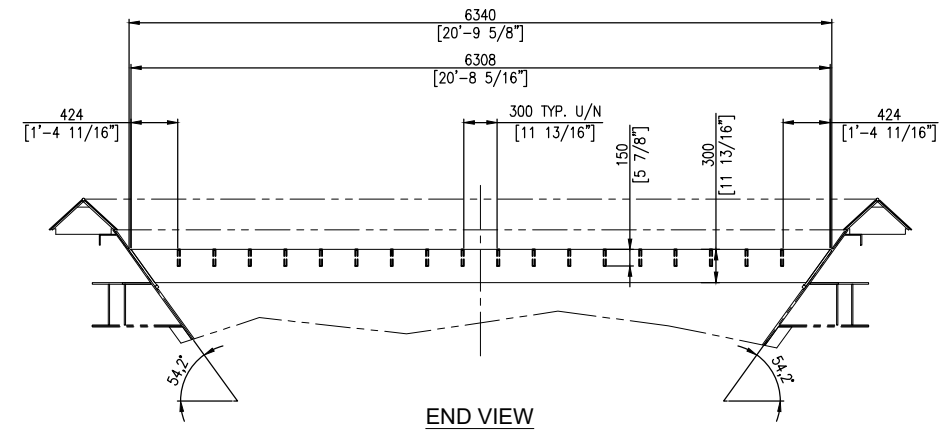
ISSUED FOR CONSTRUCTION

BEDESCHI S.p.A.
Via Prambolè, 38 - 35010 LIMENA Padova ITALY
Tel. +39-049.7663100 - Fax +39-049.8848006
E-Mail: Sales@bedeschi.it - Skype: bedeschispa@skype

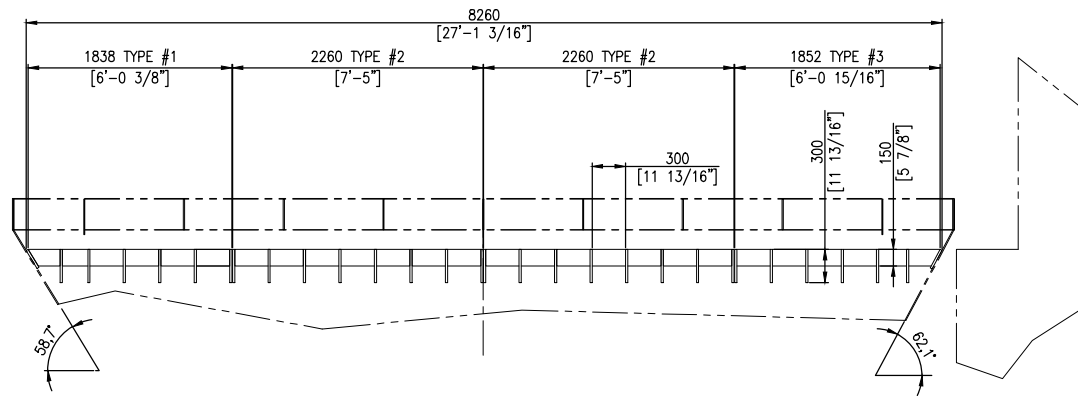
Richmond Engineering Works LLC
Pittsburgh, PA 15205

Drawn By: JSD Date: 22FEB21 Checked: HD Date: 12MAR21 Approved: - Date: - Scale: 1 : 25

RECEIVING HOPPER GRIZZLY AND DETAILS
ALABAMA STATE PORT AUTHORITY
McDUFFIE ISLAND TERMINAL
MOBILE, AL
S03497-9102 Rev. 6



END VIEW



ELEVATION (LOOKING NORTH)
RECEIVING HOPPER GRIZZLIES
(4 REQUIRED)

NOTE:
GRIZZLIES ARE TO BE TACK WELDED TO GRIZZLY STOP BARS.
SEE DWG. S03497-9101 SECTION 'C' FOR GRIZZLY STOP BAR DETAIL

No.	Dwg. No.	Description	Date	Made	Chk'd	App'd
6		REVISED AS NOTED	04AUG21	JRH	HD	-
5		REVISED AS NOTED	03AUG21	JRH	HD	-
4	S03497-9101	HOPPER SECTIONS & DETAILS	29JUL21	JRH	HD	-
3	S03497-9100	HOPPER ELEVATION & PLAN	28JUL21	JRH	HD	-
2	S03497-9002	OVERALL GENERAL ARRANGEMENT AND SECTIONS	22JUL21	JRH	HD	-
1	S03497-9001	SPECIFICATION SHEET	19MAR21	JRH	HD	-

THIS DRAWING CONTAINS PROPRIETARY INFORMATION THAT IS SOLELY THE PROPERTY OF RICHMOND ENGINEERING WORKS, L.L.C. IT MAY NOT BE COPIED OR DISTRIBUTED IN WHOLE OR IN PART WITHOUT THE EXPRESS WRITTEN CONSENT OF RICHMOND ENGINEERING WORKS.