

Alabama State Port Authority Pest Control Services Bid Addendum / Pre-Bid Meeting & Tour Questions and Answers

Pre-Bid Meeting & Tour Attendees:

- | | |
|---------------------------------|---------------------------|
| 1. CB Cherry Pest Control Corp. | 3. Redd Pest Control |
| 2. Cook's Pest Control | 4. Universal Pest Control |

Q&A SECTION:

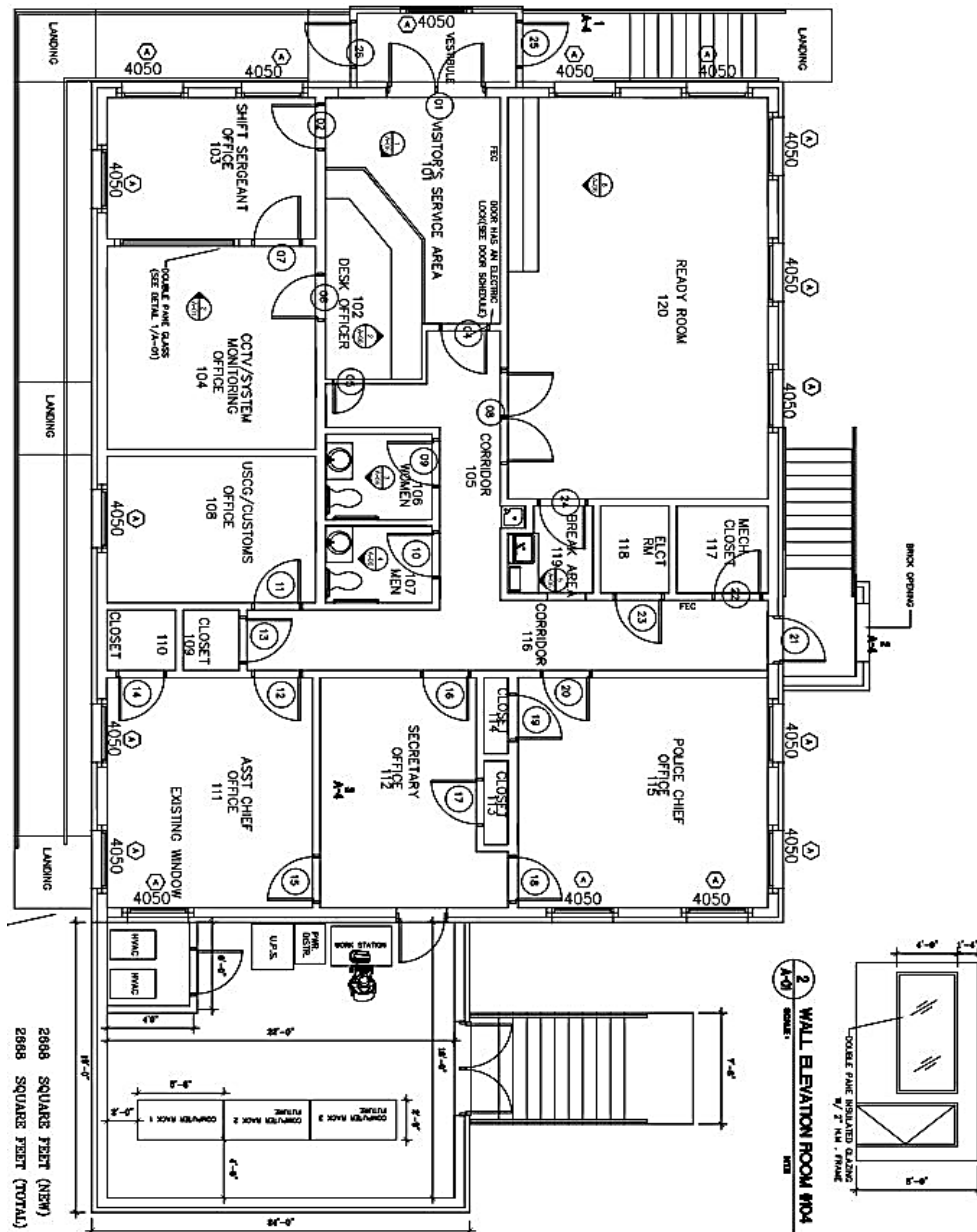
Question: What is the square footage of all facilities?

Answer: See attached images and note that square footage is approximate:

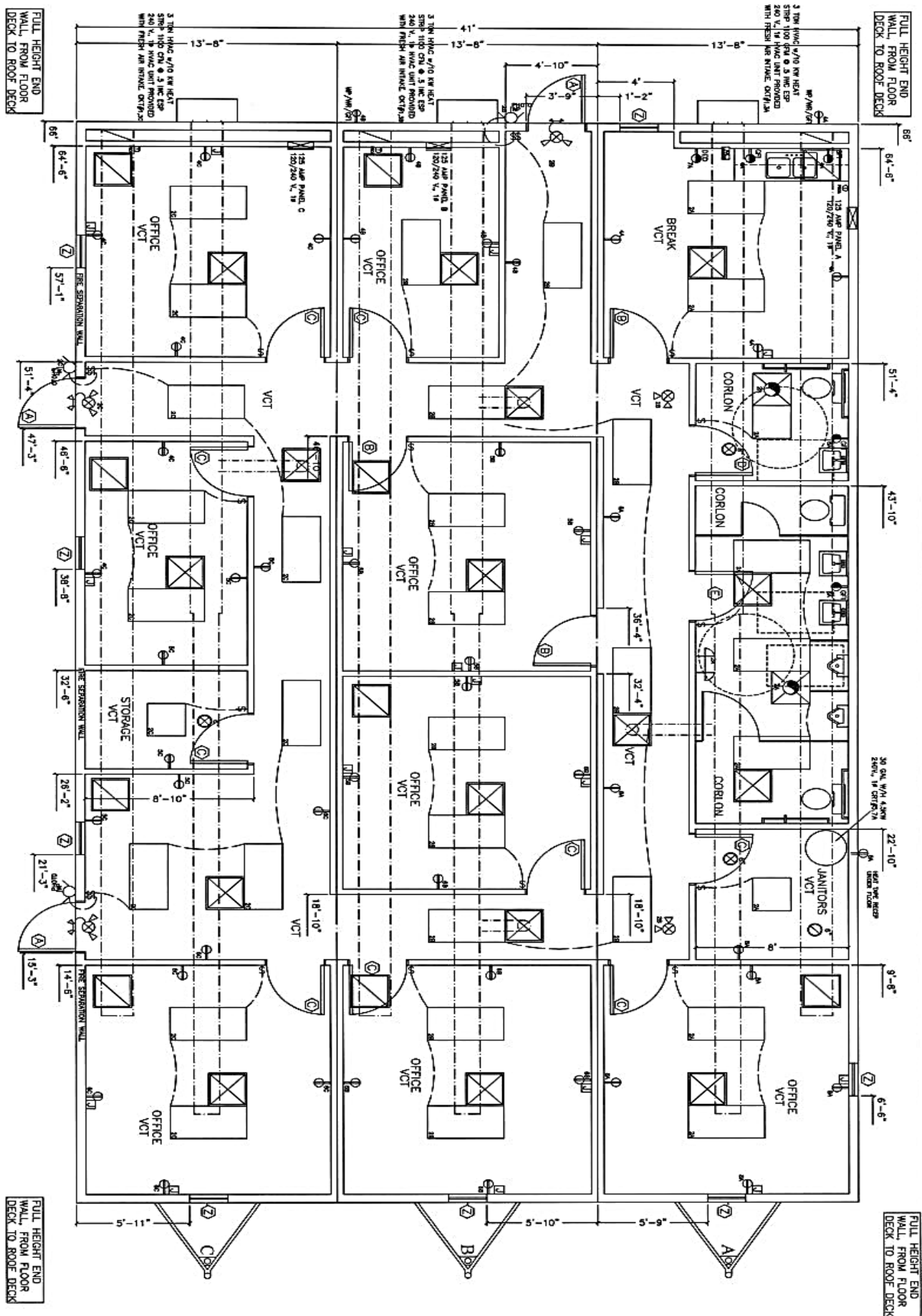
Port Police Annex Building = 1,900 SQ. FT. (No Floorplan Available)

Port Police Main Docks Guard House (unavailable)

Port Police Building = 2,668 SQ. FT. (Main Gate Guard Houses = 146 & 73)



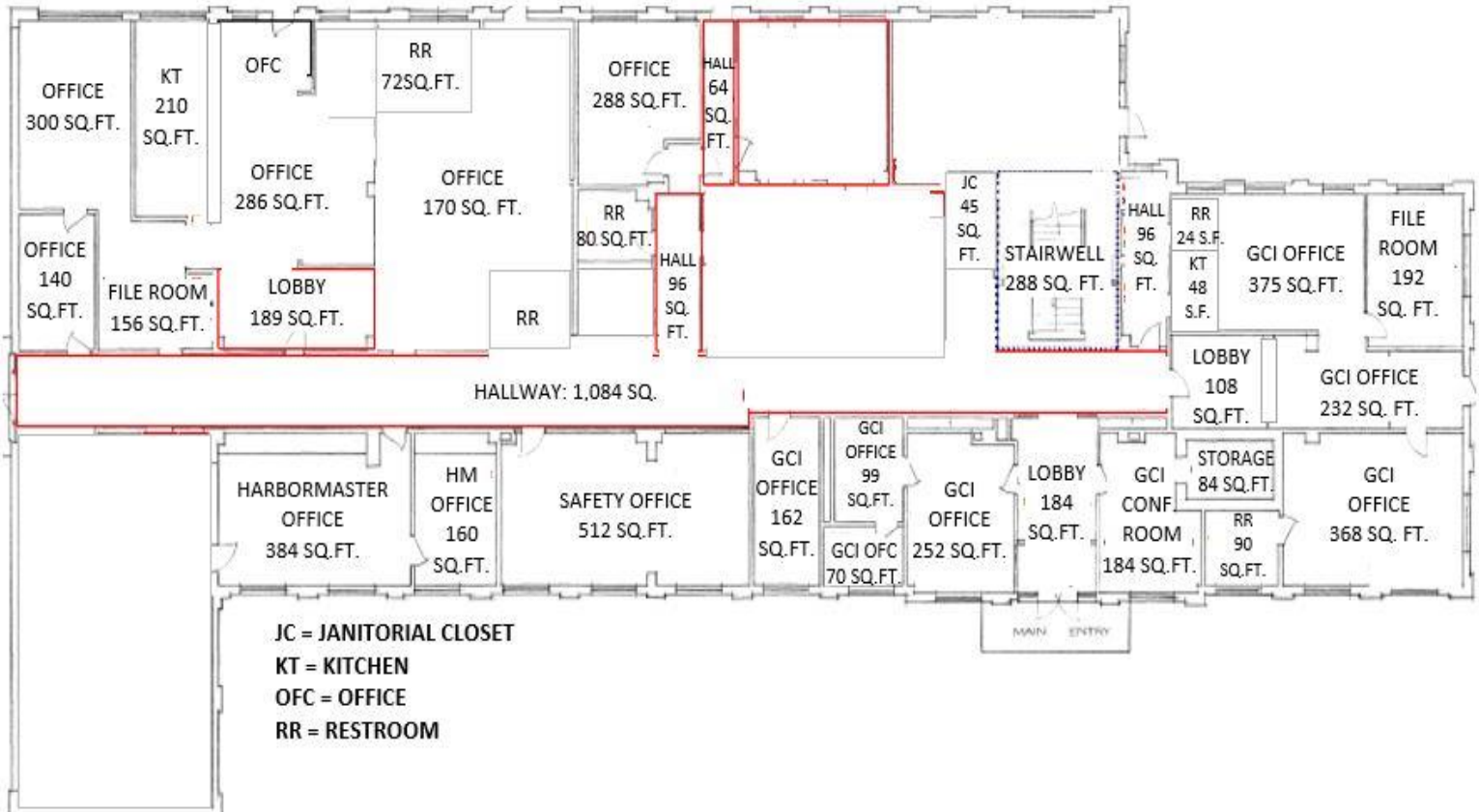
Central Maintenance Trailers Offices



4. Administration Building = 20,364 SQ. FT.

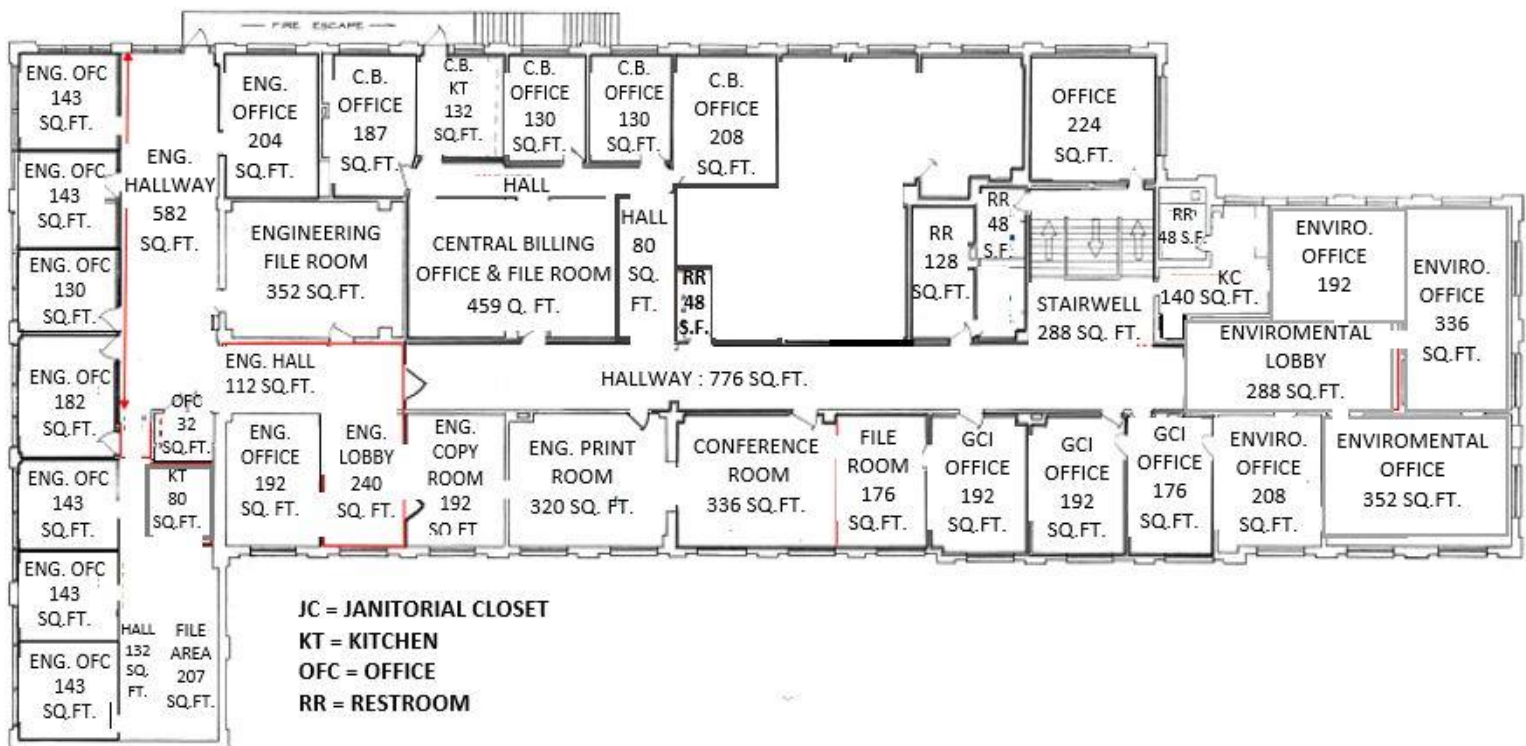
ADMINISTRATION BUILDING: 1ST FLOOR

TOTAL SQUARE FOOTAGE: 10,182

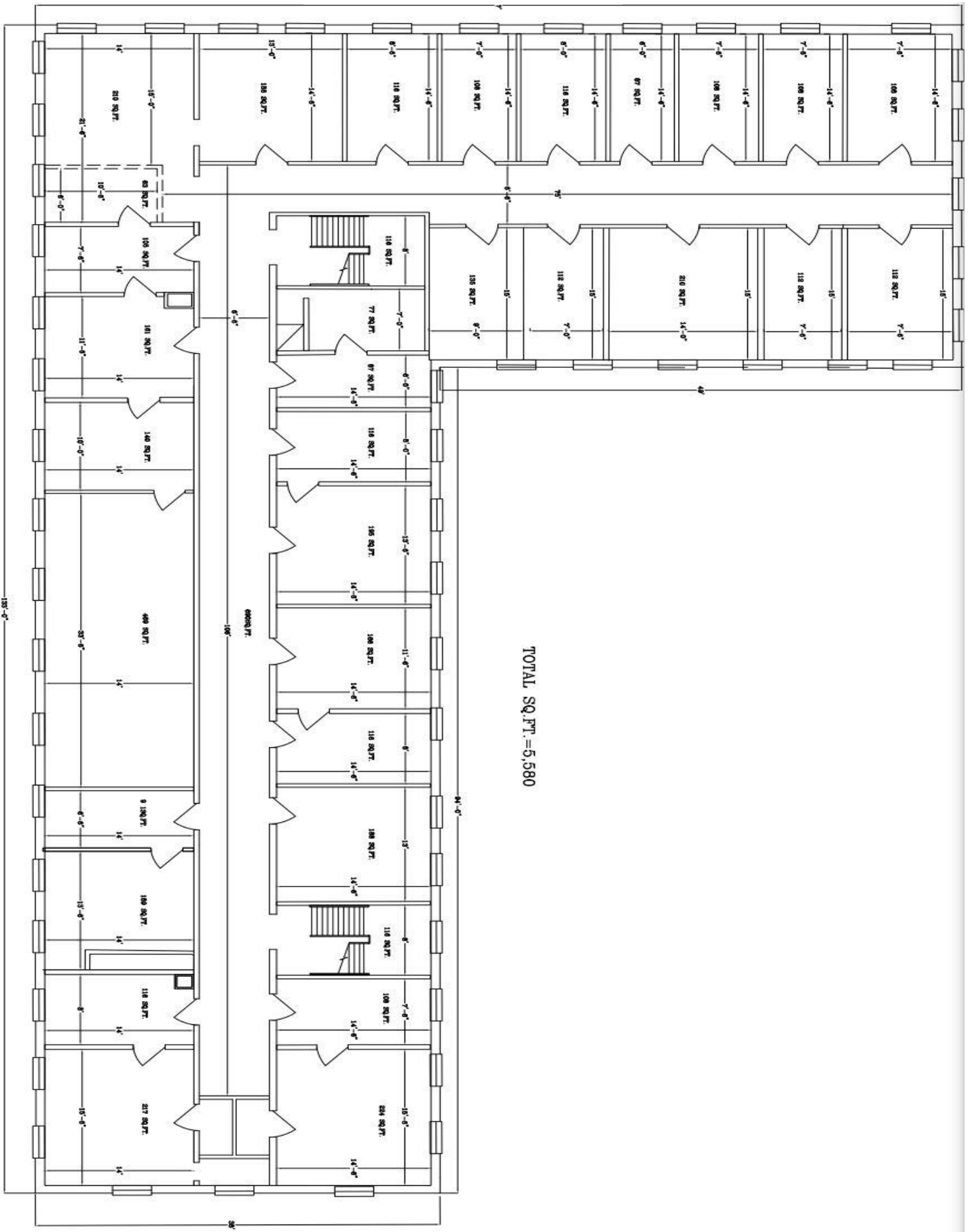


ADMINISTRATION BUILDING: 2ND FLOOR

TOTAL SQUARE FOOTAGE: 10,182

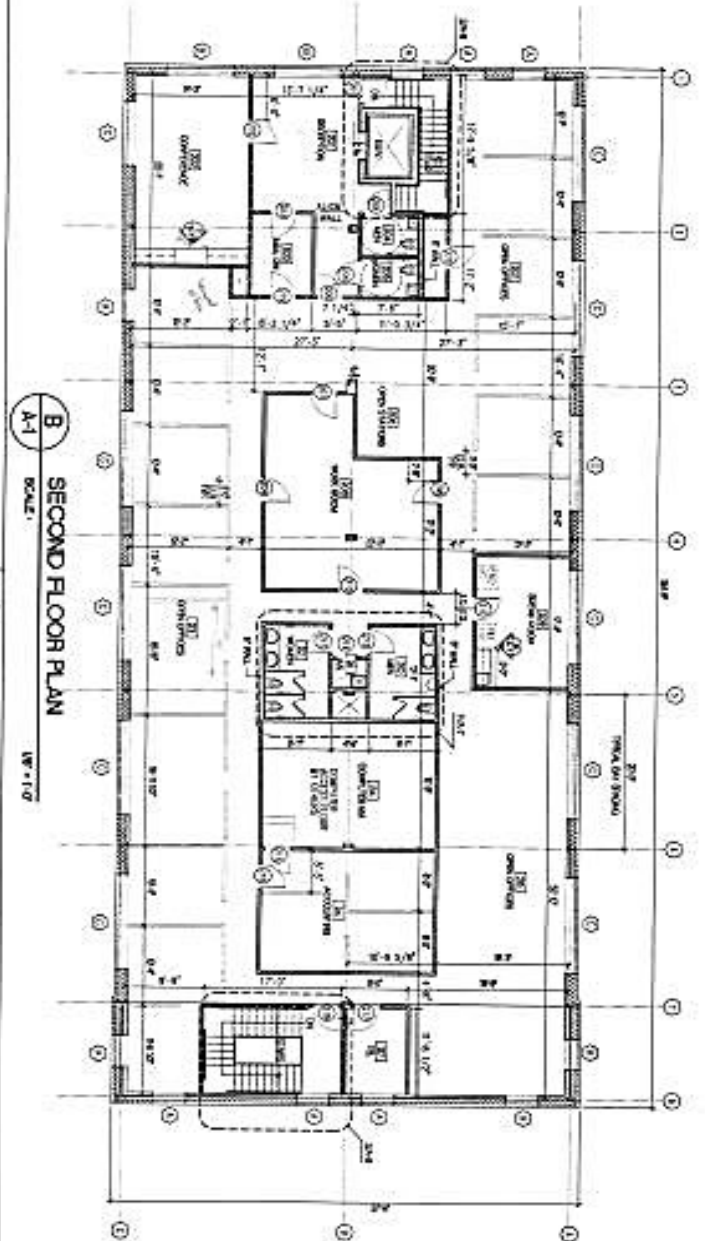
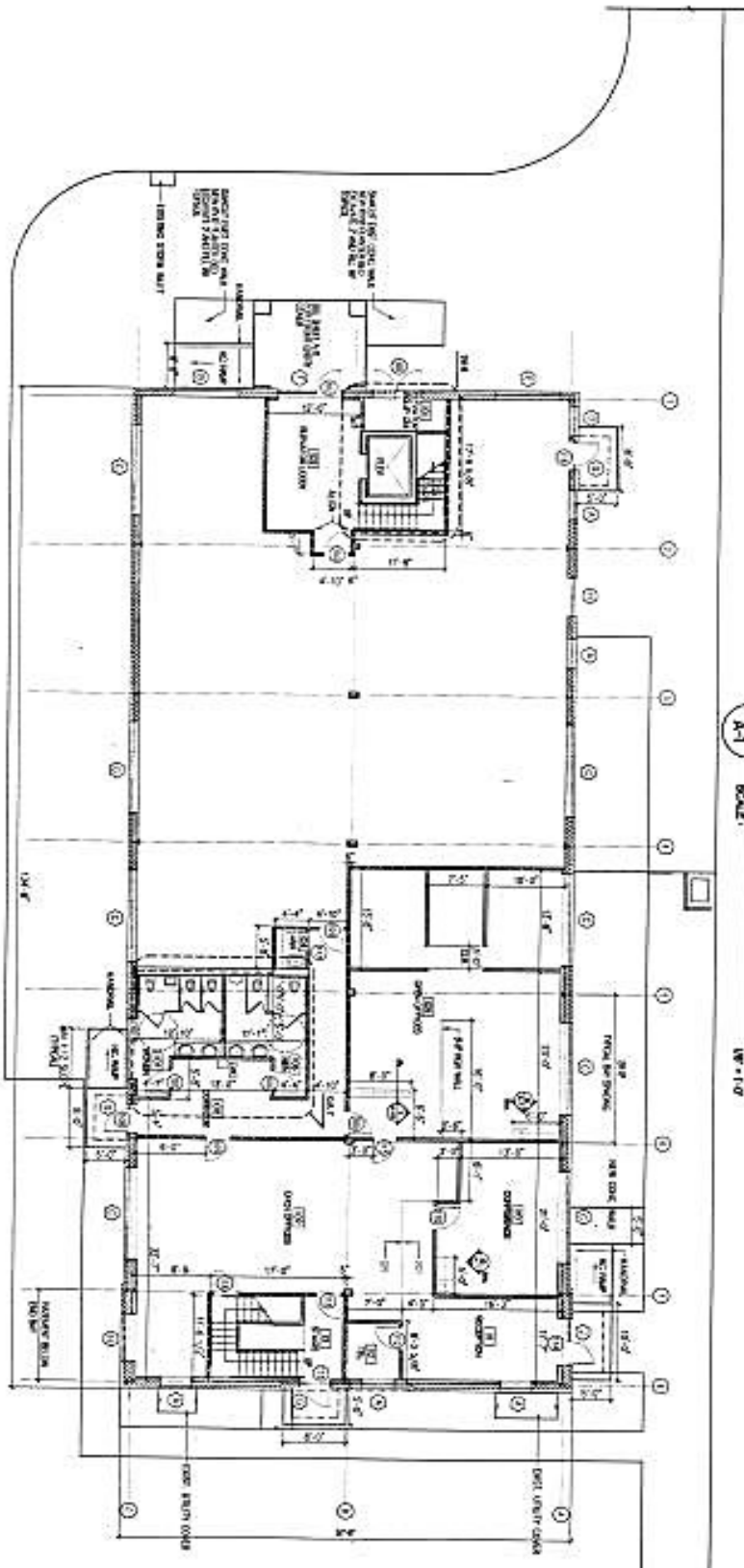


Building 50 = 5,580 SQ. FT.

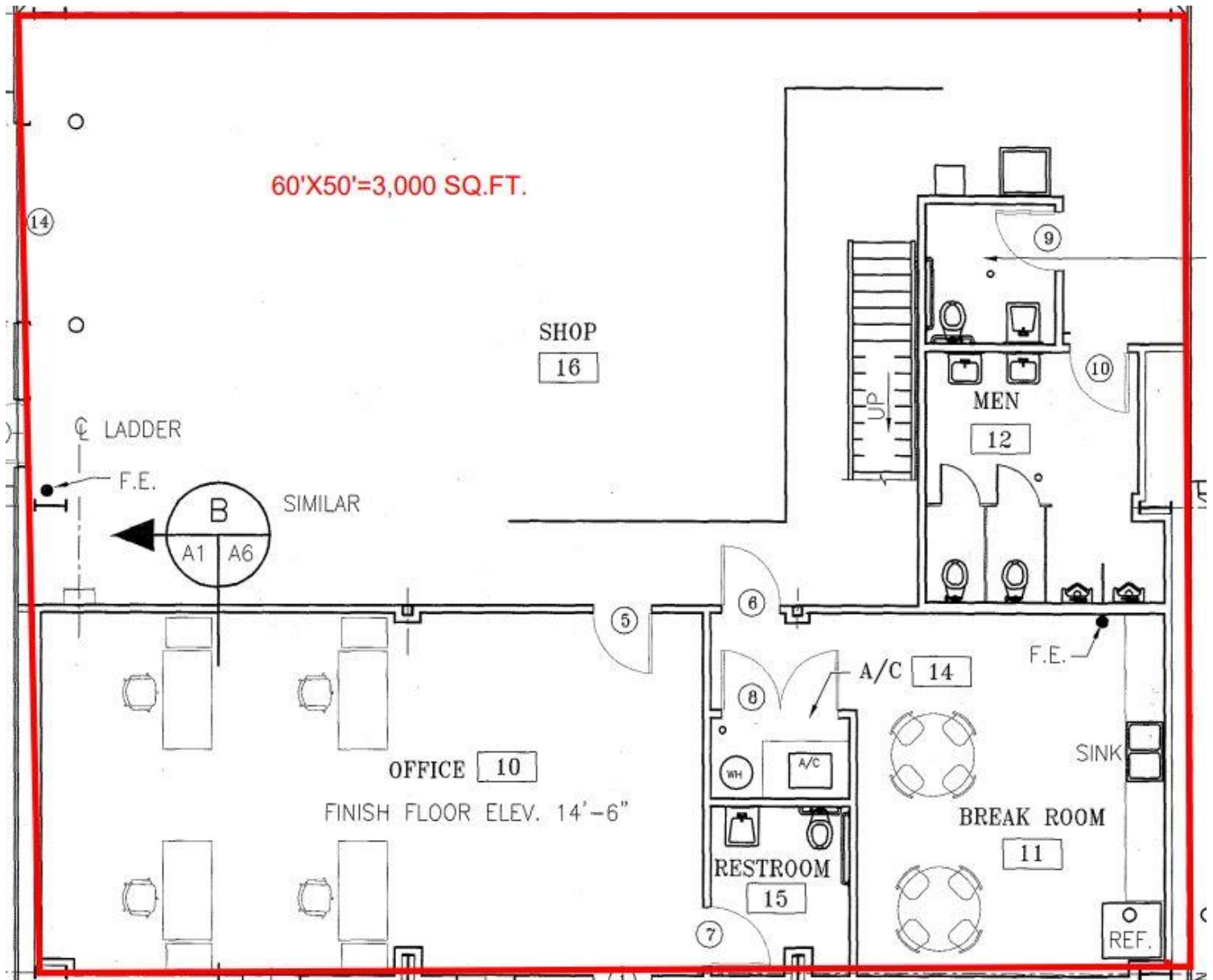


BLDG. # 50 FIRST FLOOR LAYOUT PLAN VIEW

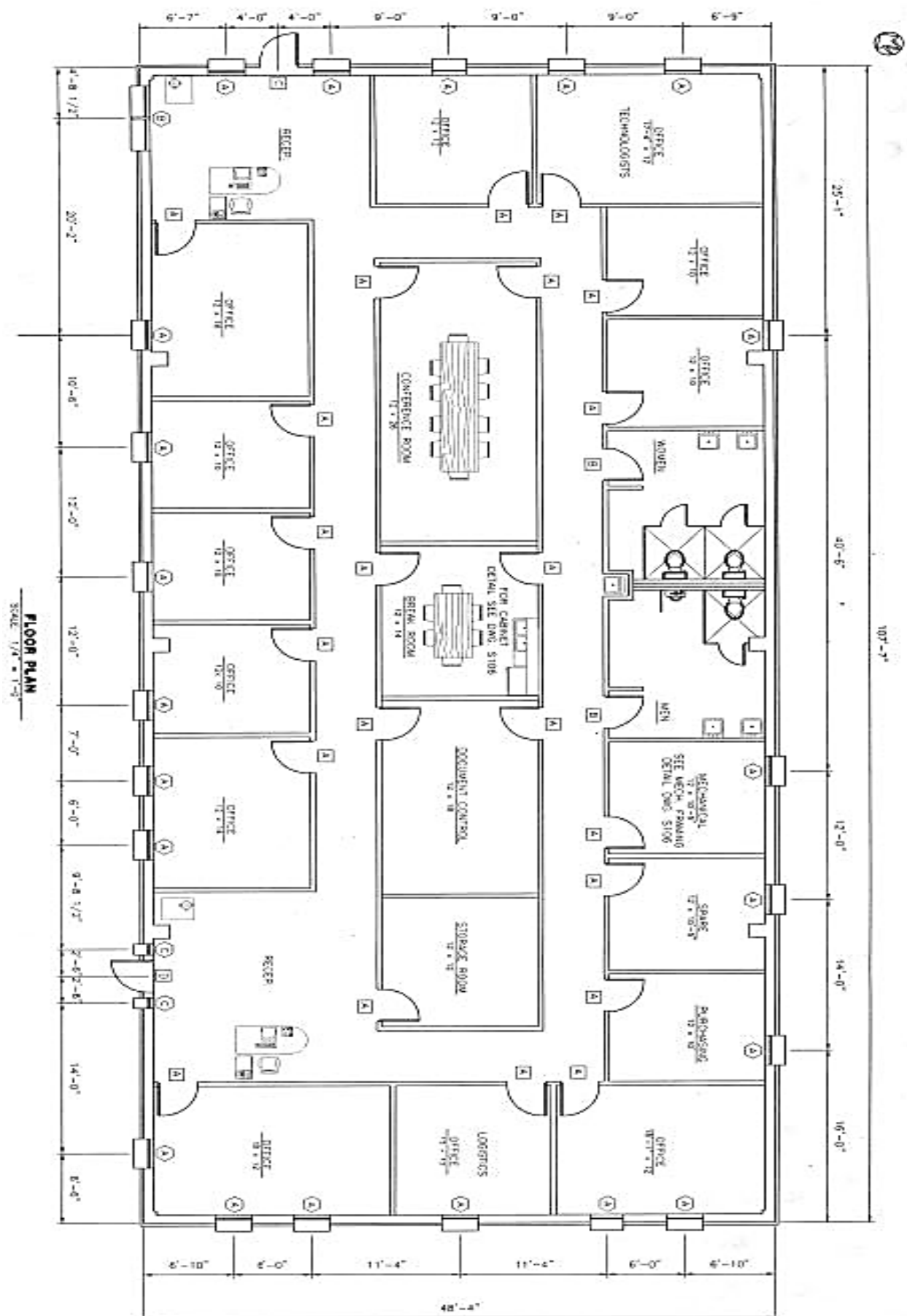
TOTAL SQ.FT.=5,580



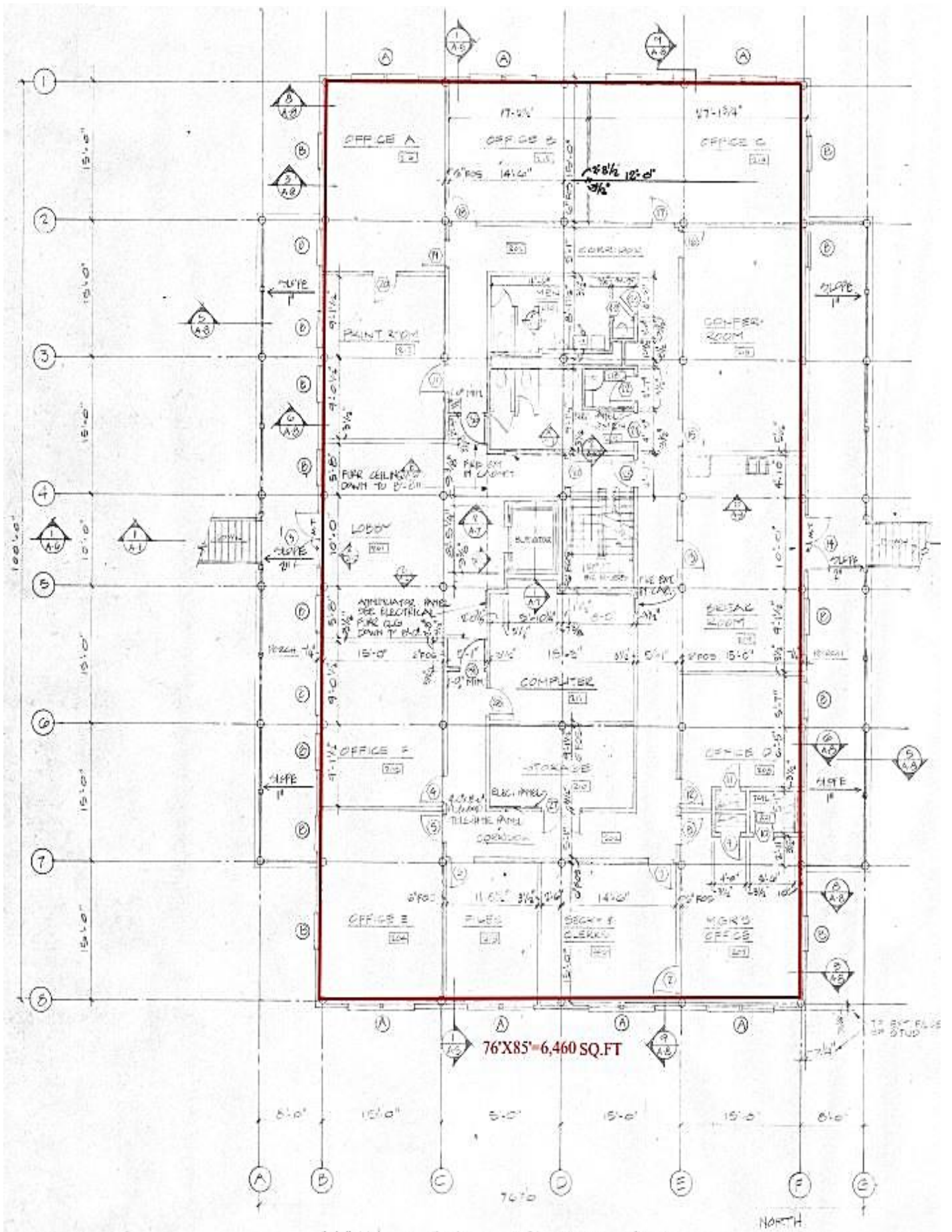
Pinto Terminal = 3,000 SQ. FT. (Guard House = 73)



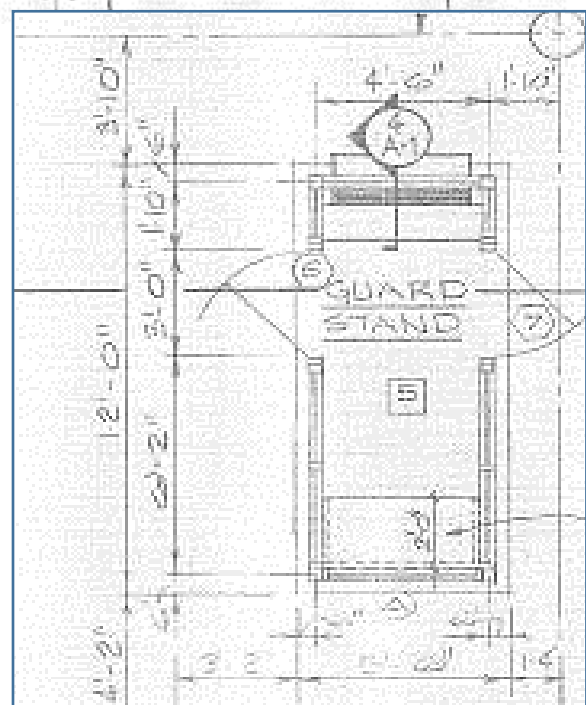
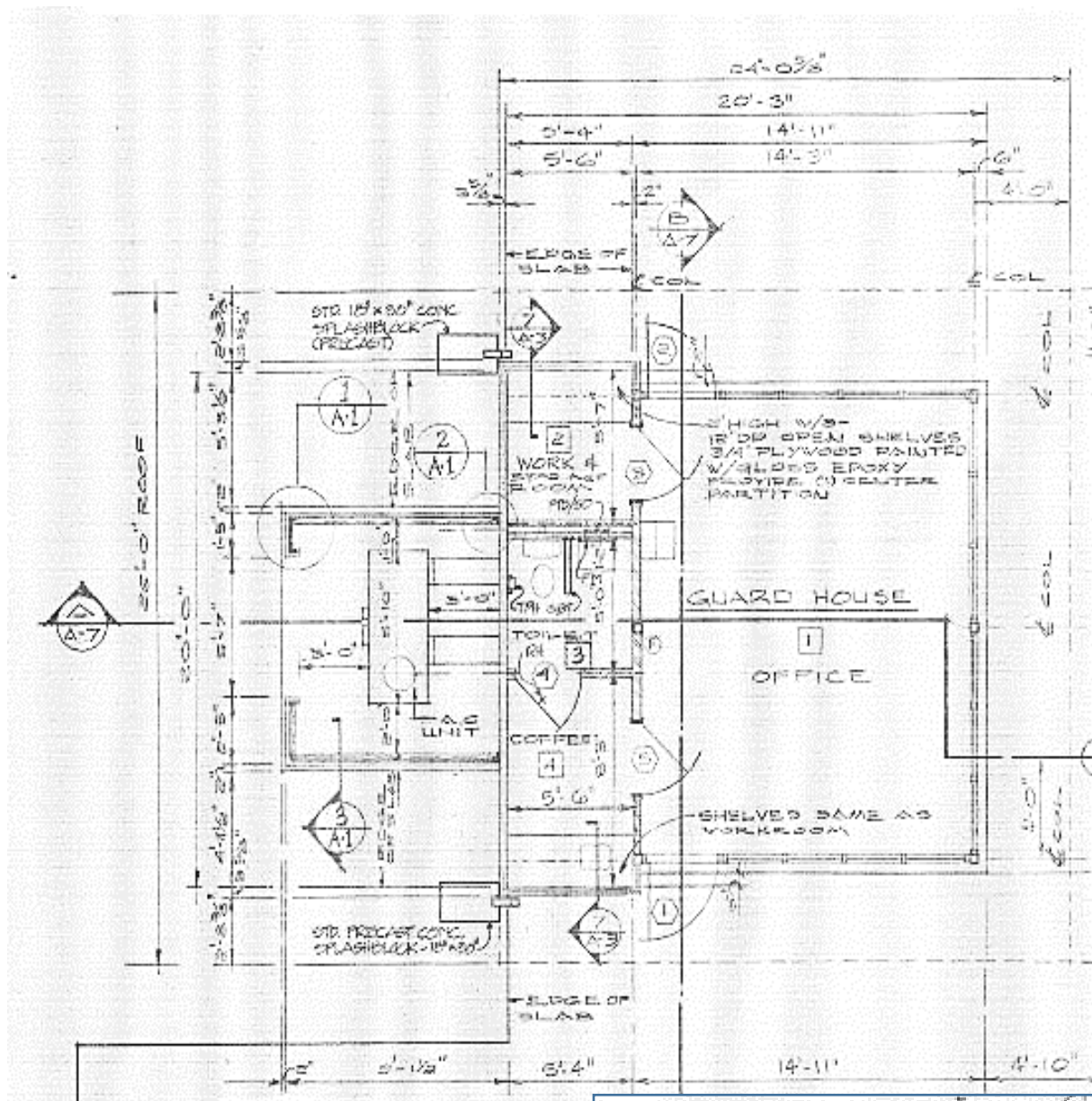
McDuffie Coal Terminal – Administration Building = 5,200 SQ. FT. (Guard House = 73)



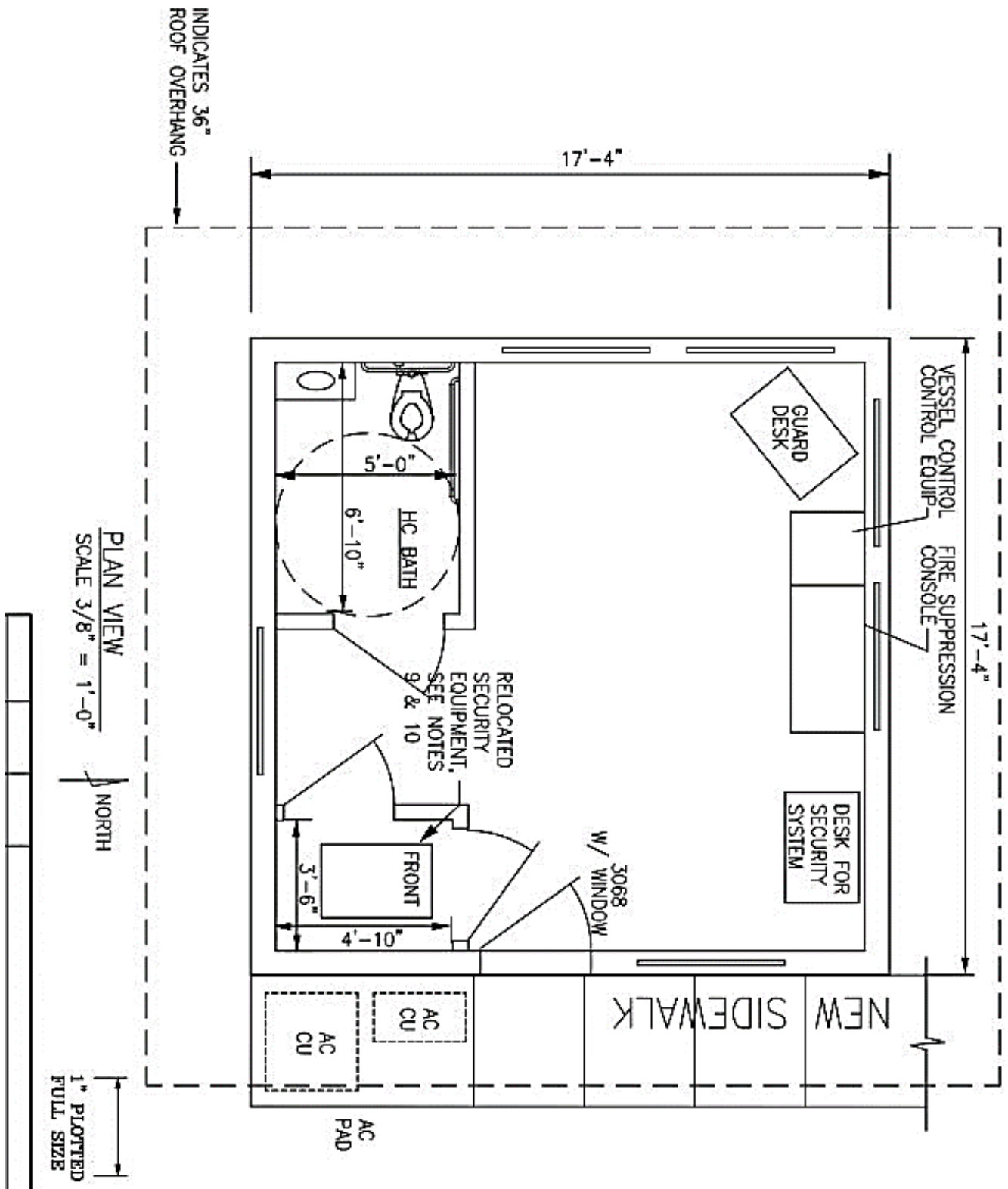
McDuffie Coal Terminal – Beach House: TOTAL SQ. FT. = 6,460 (Main Level)



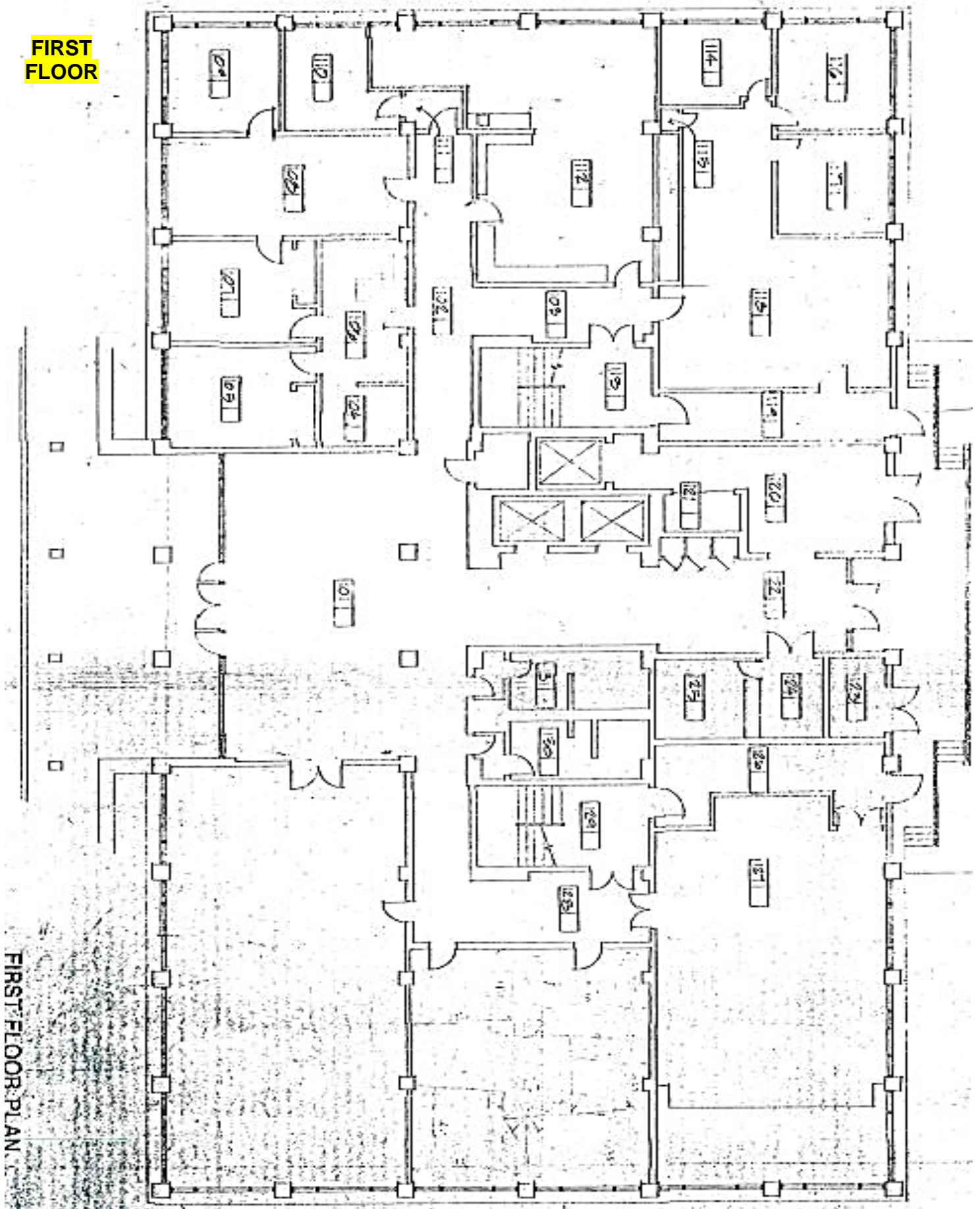
McDuffie Coal Terminal – Guard Break Room & Guard House



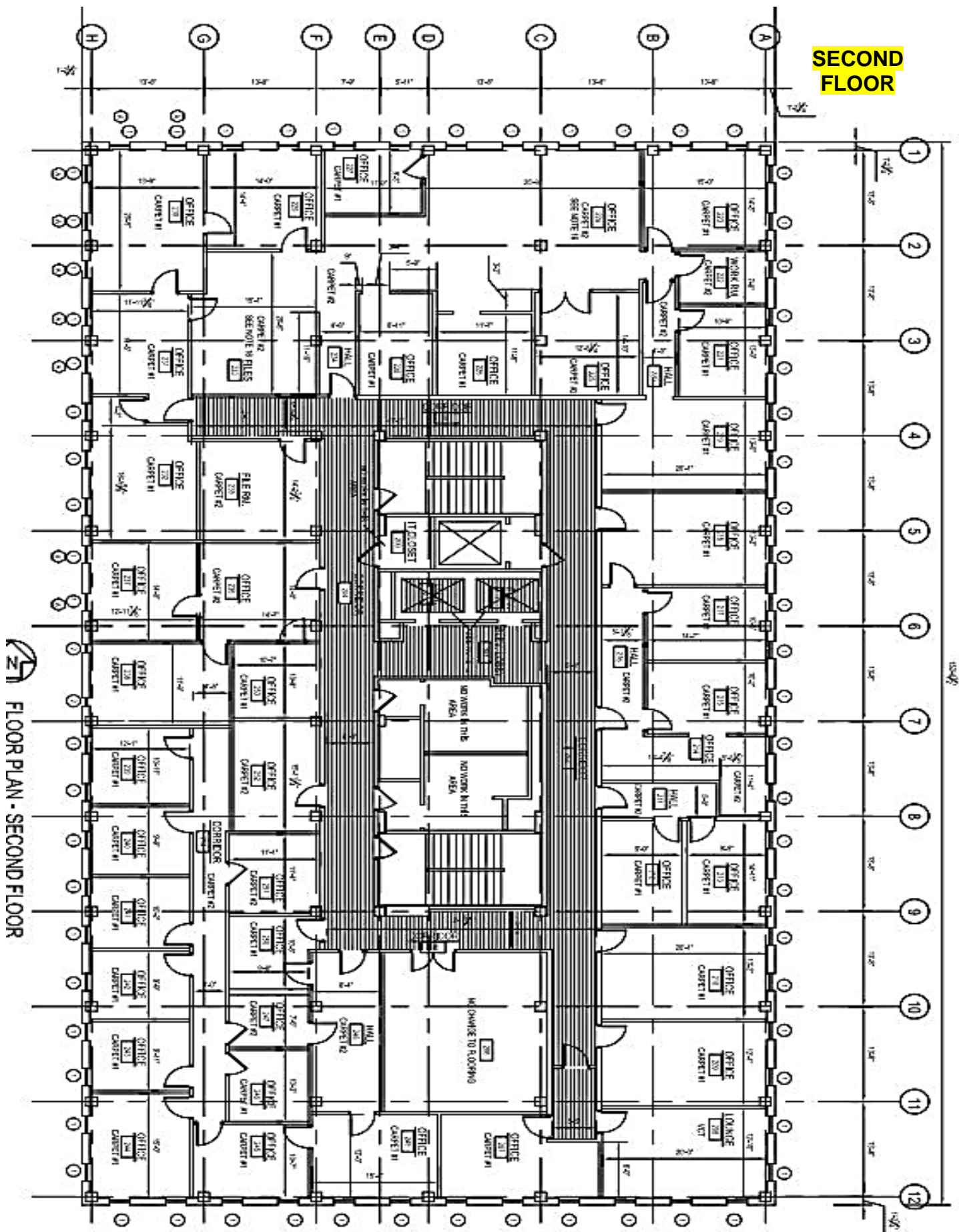
Marine Liquid Bulk Terminal Guard House = 289 SQ. FT.



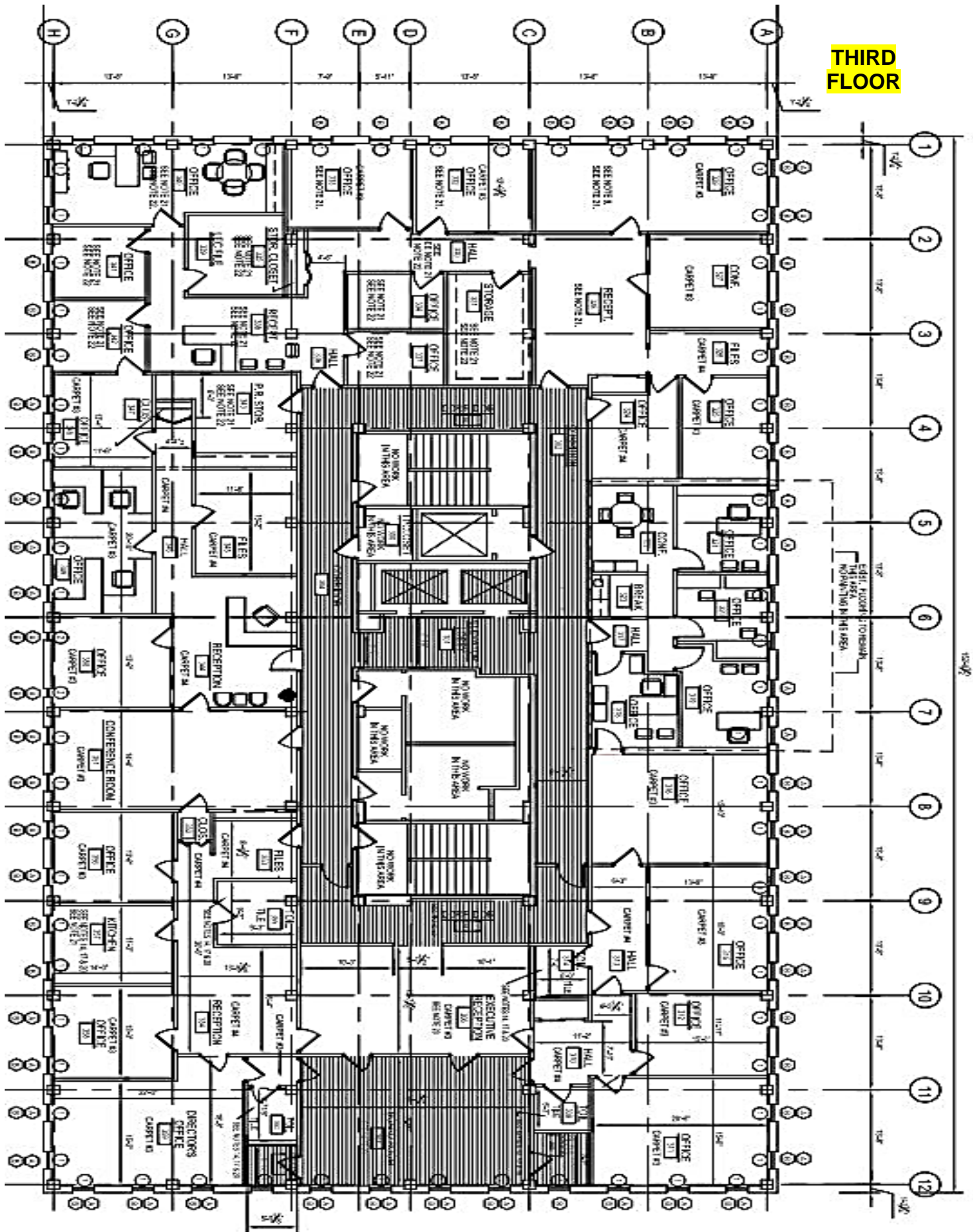
FIRST
FLOOR



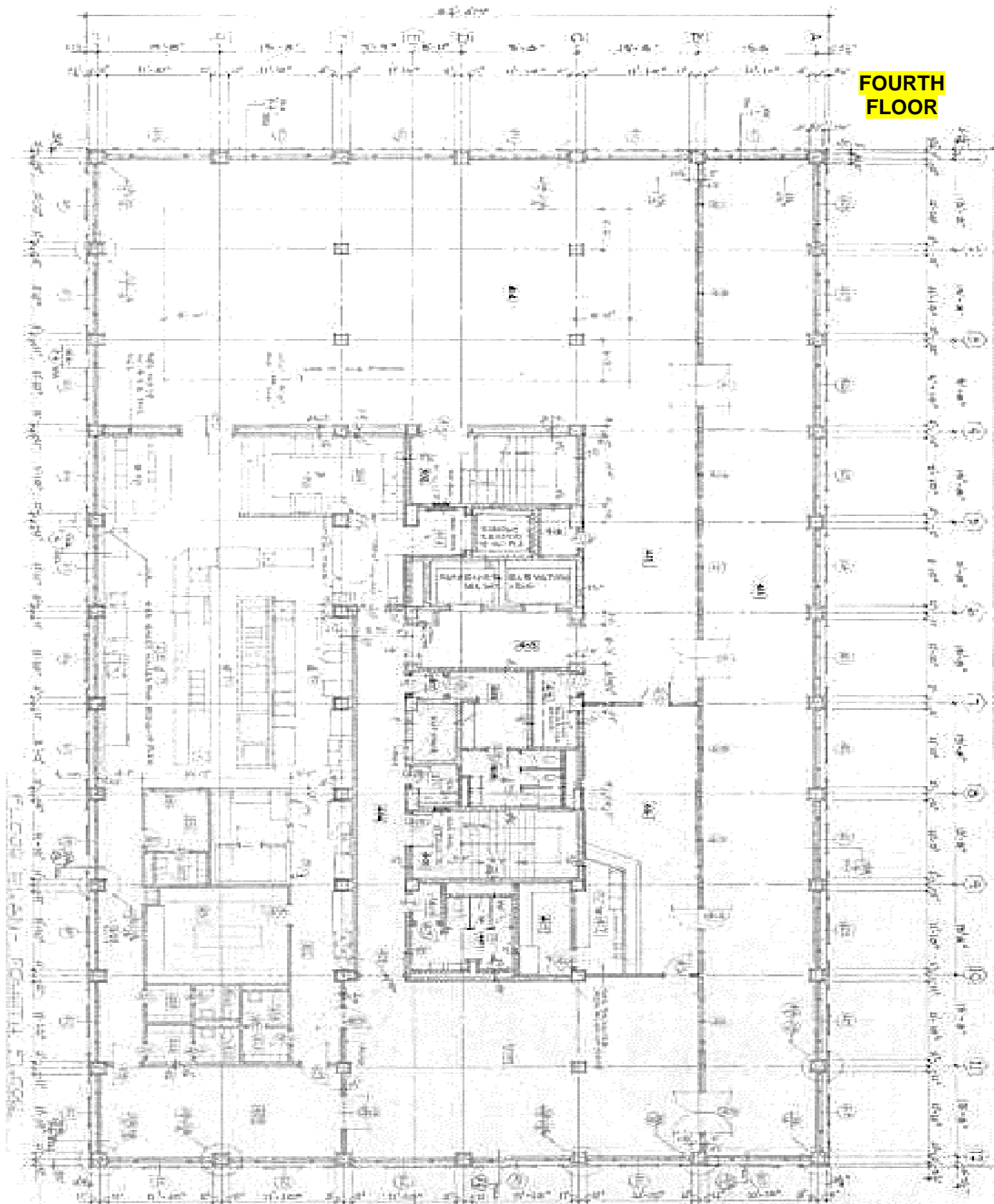
SECOND FLOOR



THIRD FLOOR



FOURTH FLOOR



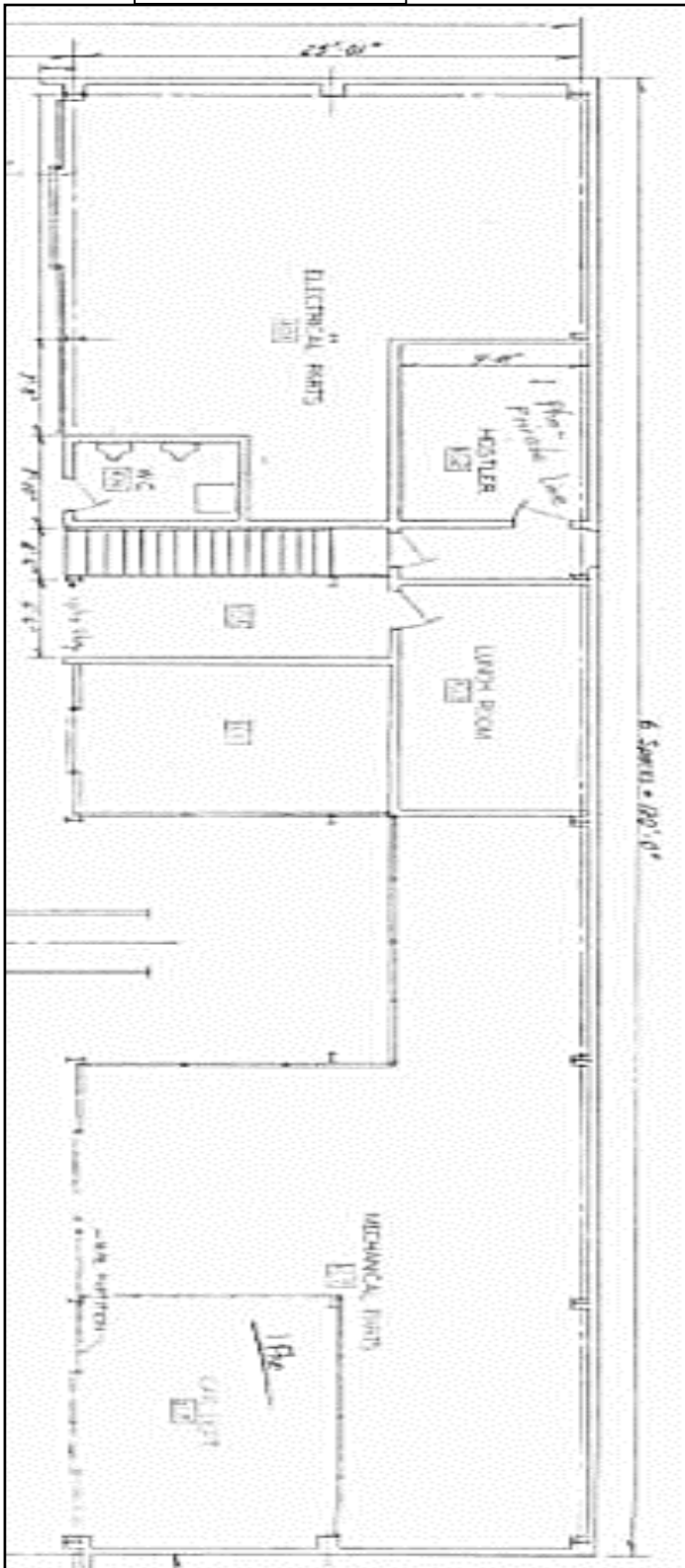
DIFFICULTY TO OBTAIN DATA



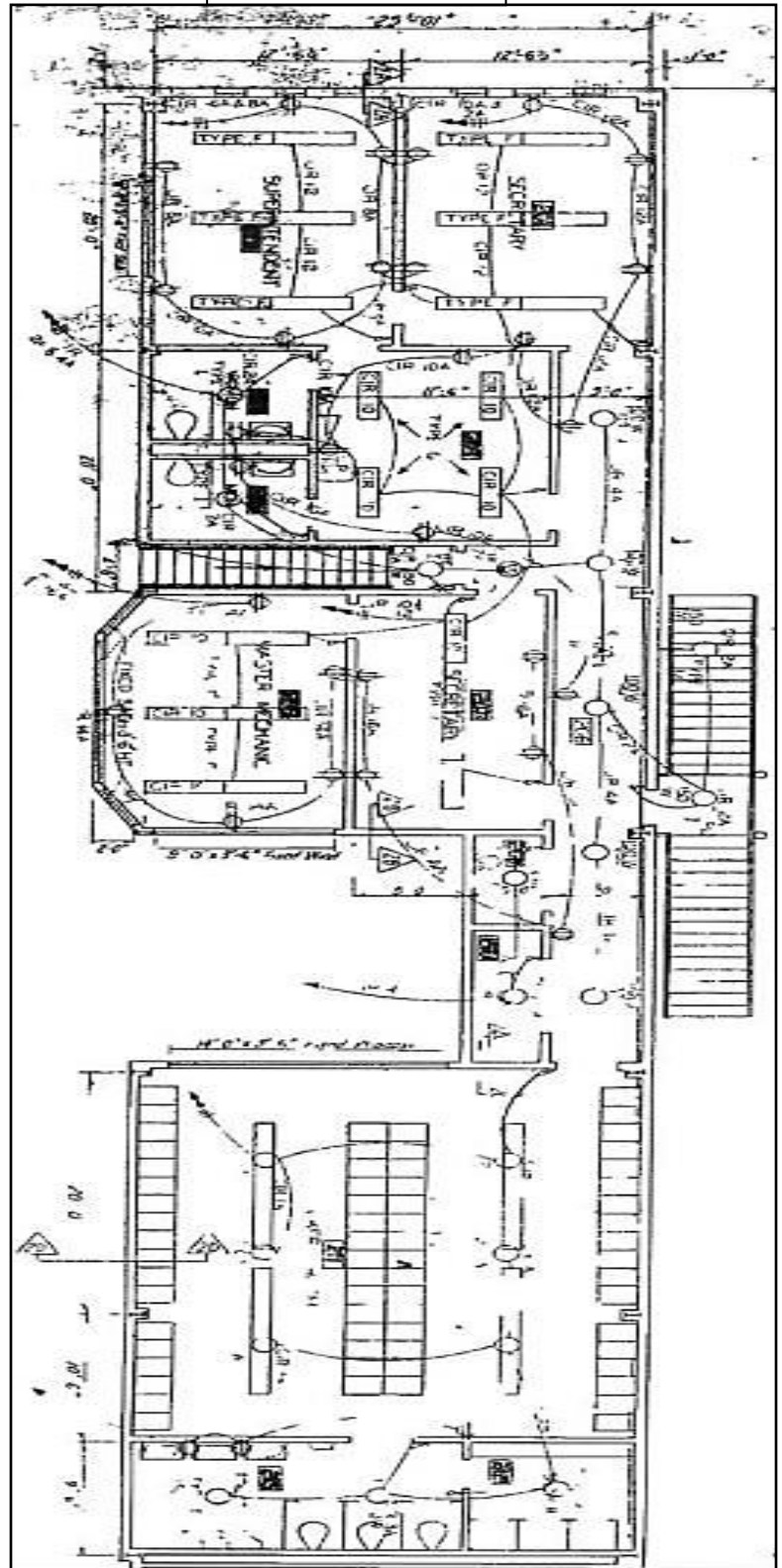
Terminal Railroad (Maintenance of Way) = 300 SQ. FT. (No Image Available)

Terminal Railroad (Diesel Shop) = 6,344 SQ. FT.

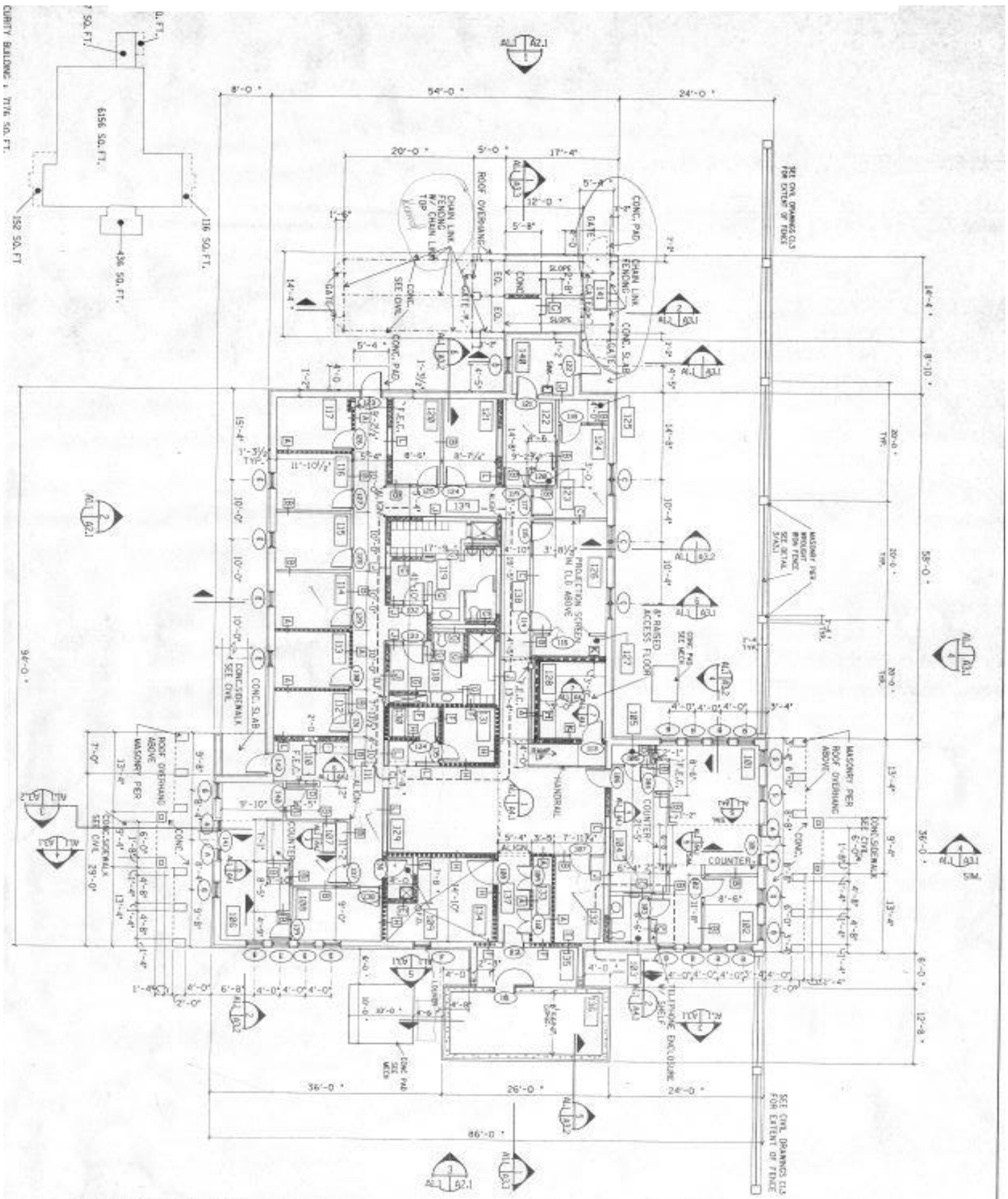
FIRST FLOOR

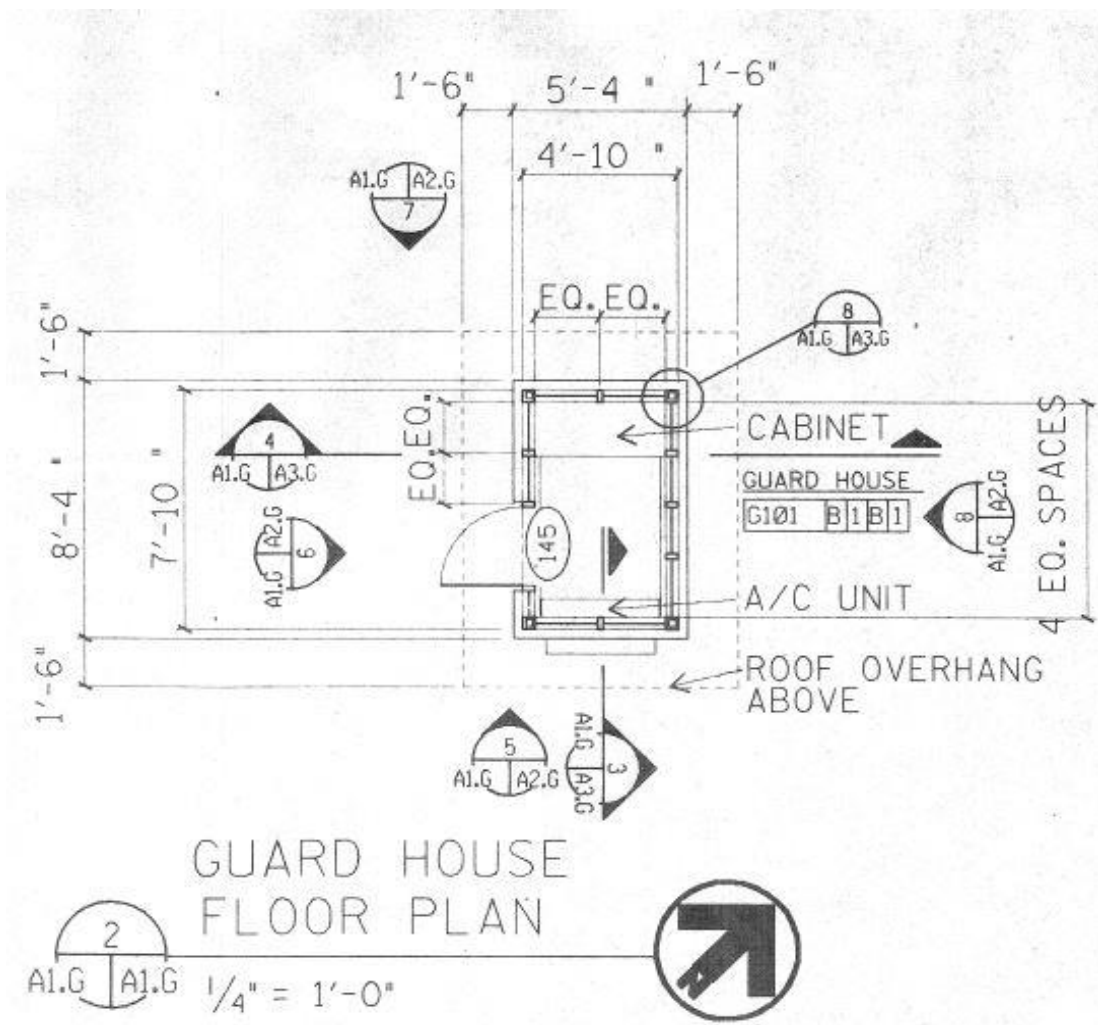


SECOND FLOOR



CURITY BUILDING, 7176 SO. FT.

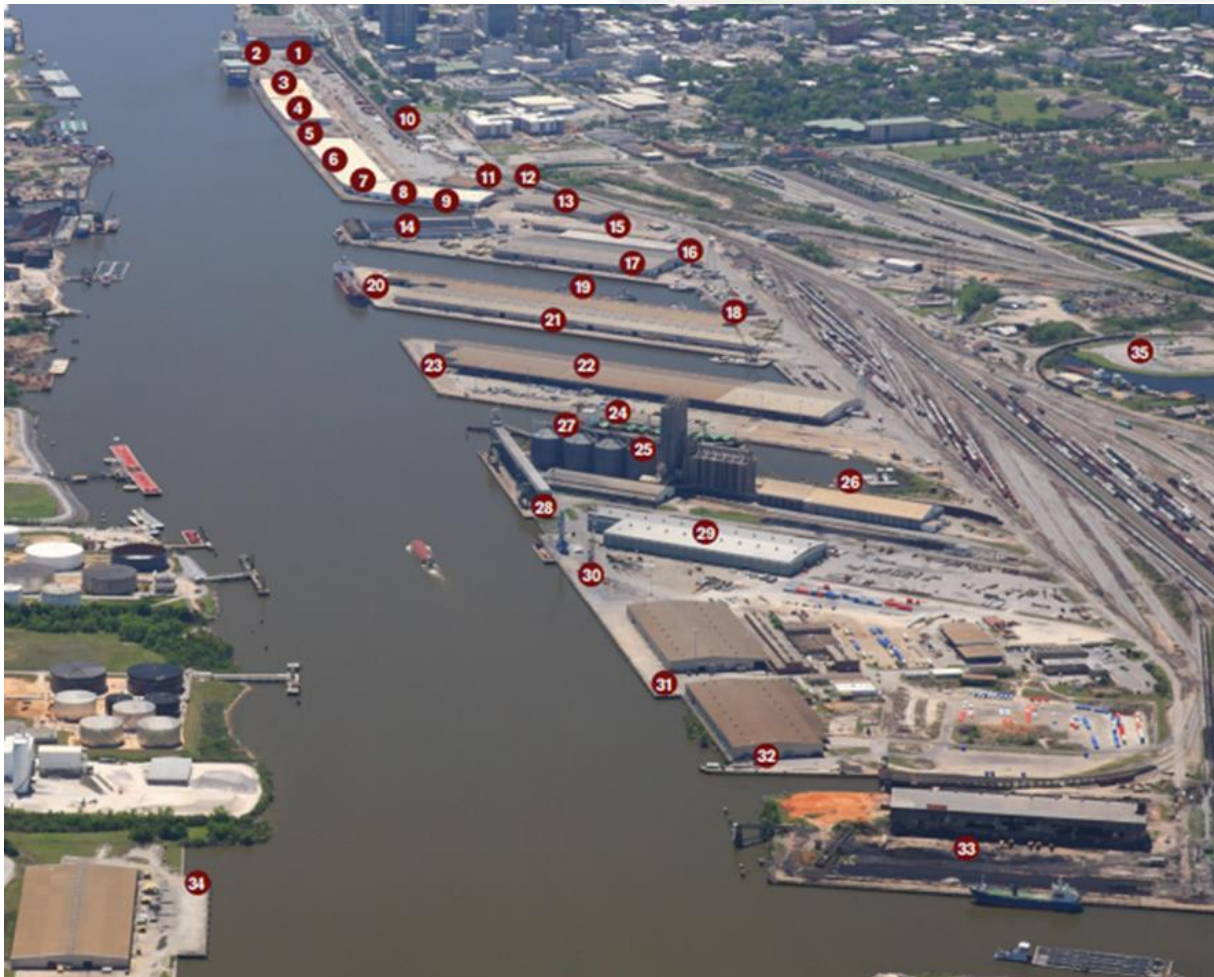




BLAKELEY GUARD HOUSE (UNAVAILABLE)

PIER E – PIER 2: MAIN DOCKS (select warehouses)

1. Pier 2 Yard: 22-acre lighted container/general cargo terminal
2. Pier 2: 900 ft. berth
3. Pier 3: 30 x 500 ft.; 200 x 500 ft. transit shed
4. Pier 4: 30 x 500 ft.; 200 x 500 ft. transit shed
5. Pier 5: 30 x 500 ft.; 100,000-sq.-ft. container & breakbulk operations
6. Pier 6: 30 x 500 ft.; 200 x 500 ft. transit shed
7. Pier 7: 30 x 670 ft.; 200 x 500 ft. transit shed
8. Pier 8: 30 x 580 ft.; 200 x 500 ft. transit shed
9. RO/RO berth: 97 ft. traffic area at stern, 580 ft. shipside dock
10. International Trade Center/Alabama State Port Authority Headquarters
11. Unit 19 Warehouse: 37,000 sq. ft.
12. Pier 2 Scale House
13. Berth 8 Warehouse: 68,000 sq. ft.
14. Pier A South: 70 x 570 ft.; 120,000 sq. ft. blast freezer/refrigerated storage terminal
15. ASPA Central Maintenance
16. Center A Warehouse: 50,000 sq. ft.
17. Pier A North: 1,508 ft.; three berths; 205,500-sq.-ft. warehouse; 85,000-sq.-ft. open storage
18. ASPA Administration Building
19. Pier B South: 102 x 1,530 ft.; three berths; 175,200-sq.-ft. warehouse; 100-ft.-wide loading apron; dual covered rail
20. Pier B River End: 32 x 650 ft.; 18,000-sq.-ft. open storage
21. Pier B North: 76 x 1,600 ft.; three berths; 274,500-sq.-ft. transit shed, triple-covered rail tracks
22. Pier C South: 80 x 1,532 ft.; two berths; 410,000-sq.-ft. transit shed; dual-covered rail tracks
23. Pier C River End: 70 x 812 ft.; 62,700-sq.-ft. open storage
24. Pier C North: 74 x 1,432 ft.; three berths; steel & heavy-lift area; 244,840-sq.-ft. open storage.
25. Pig Iron Dock: 79 x 640 ft.
26. Cement Terminal
27. Grain Elevator: 800 ft. pier
28. Pier D: 800 ft. wharf; 47,500-sq.-ft. warehouse on north side of grain elevator
29. Alabama Steel Terminals: 176,000 sq. ft.; multi-modal steel coil handling terminal
30. Pier D-2: 48 x 715 ft.; 15-acre open storage area
31. Pier E: 891 ft. general cargo & RO/RO berth, twin warehouses, 126,900 sq. ft. each; 47,000-sq.-ft. open storage
32. CG Railway Terminal: 130 x 400 ft. cut slip – position dot over the water rather than at the end of pier E.
33. Future RO/RO Automotive Logistics Terminal: Approx. 58 ac. Finished Automobile Terminal by mid-2020, 1,540 ft. berth.
34. Blakeley Terminal: 153,000-sq.-ft. warehouse; 500 ft. pier
35. Truck Control Terminal: Directions- From I-10, exit north onto Water Street. Turn right on Beauregard Street and follow signs. From I-165, exit south onto Water Street. Turn left on Beauregard Street and follow signs.



Question: Should warehouses be sprayed as well as baited?

Answer: Yes, only the restrooms will need spraying.

Question: How should documents/records be signed?

Answer: They may be signed by a representative in that department who will then scan the document to Joy Lang or you may send directly to her at

Joy.Lang@alports.com

REVISED BID OPENING DATE:

The revised date for the bid opening is Thursday, September 15, 2022, at 9:00 am on the 4th Floor of the International Trade Center.