



Alabama State Port Authority
Addendum to R&P or Specification Booklet

Project Name Blakeley Fender Repair

Project No. 11127 **Task No.** 01 **Addendum No.** 1

To: Prospective Bidders

Date: 10/3/2022

The following items are hereby included in the bid documents by this addendum.

Item	Description
1.	This sign in sheet from the optional pre-bid meeting is attached.
2.	Shop drawings showing the hardware are attached. Note these drawings are being provided for reference only. It is still the Contractor's job to verify what is present at the site and replace in kind.

Please indicate your receipt of this addendum by adding the addendum number in the appropriate place in your Requisition & Proposal or Specification Book.

Project Manager:

Matthew Thomas

10/3/2022

Matthew Thomas, E.I.
Project Engineer

Date



Alabama Port Authority
Pre-Bid Meeting Sign-In Sheet

Project Name	Blakeley Fender Repair
Date	September 29, 2022

Time 9:00 AM

Location Blakeley Terminal

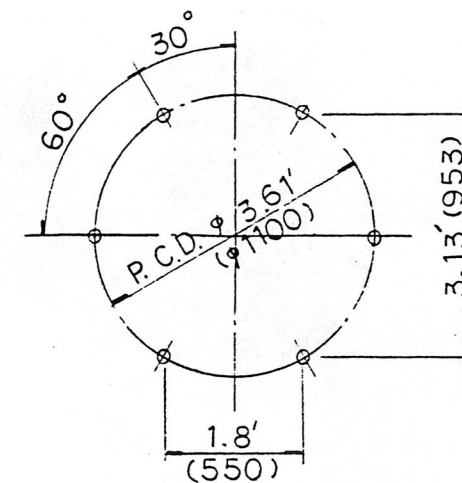
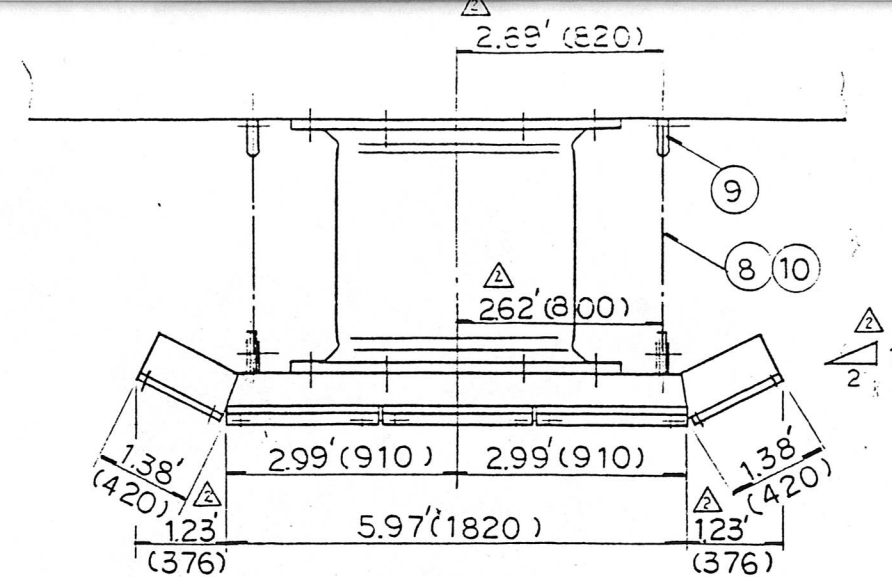
PROJECT # 11127 **Task #** 1

[illegible]

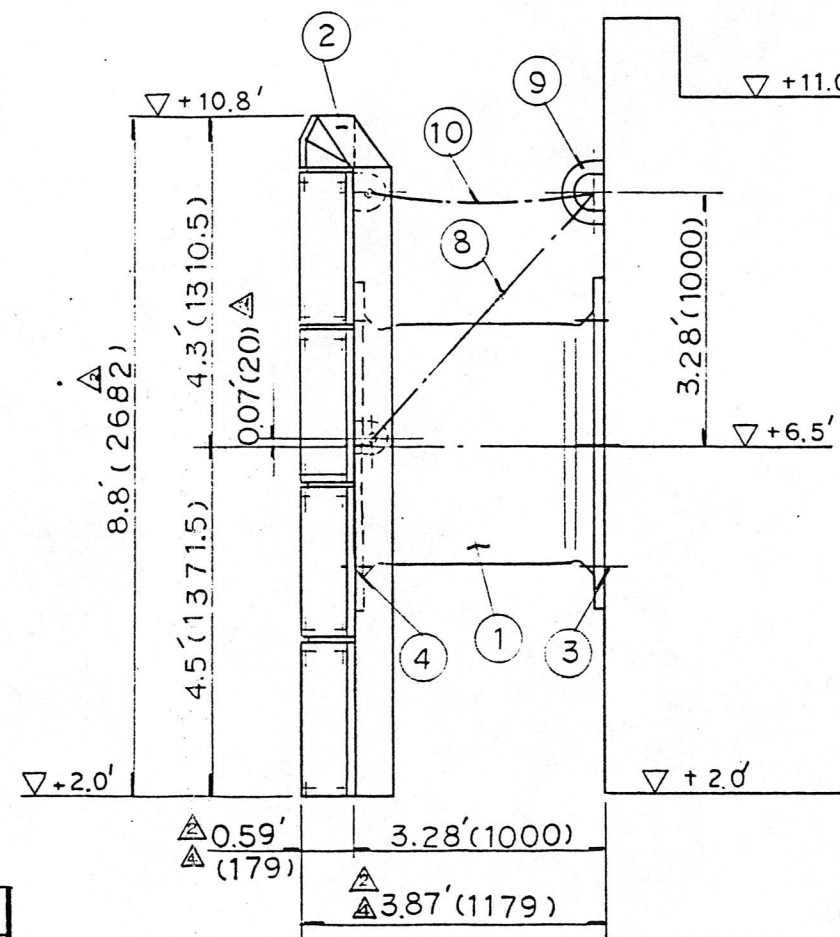
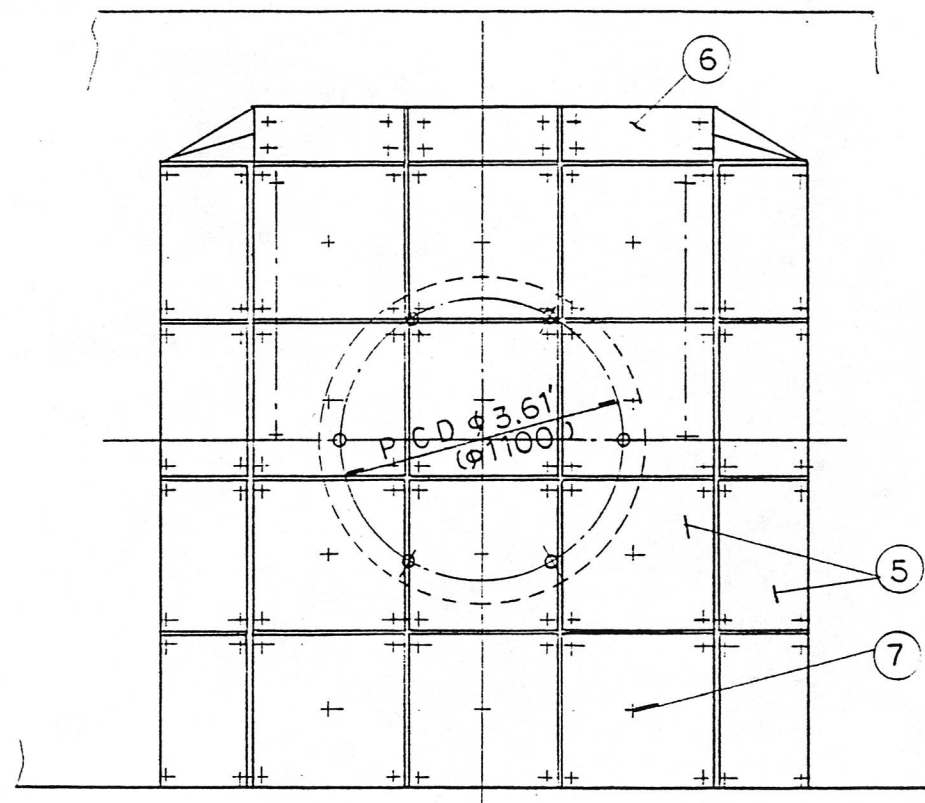
IV. DRAWINGS:

- | | | | | |
|----|-----------------------------------|---|-----------------|------------|
| A. | SUC1000H(RS) 1 x 1 System Drawing | - | 89F-290-R1 | 4 |
| B. | SUC800H(RE) 1 x 1 System Drawing | - | 89F-291-R1 | 8 |
| C. | Super Bolt | - | 89FT-410 | 4 |
| D. | Rubber Flex Chain | - | 89FT-412 | OFD-006 |
| E. | Rubber Flex Chain | - | 89FT-414 | OFD-008 |
| F. | 50mm Dia. U-Anchor | - | 89FT-411 | |
| G. | 36mm Dia. Tension Chain | - | 89FT-413-R1 | OFD-007 |
| H. | 26mm Dia. Tension Chain | - | 89FT-415 | OFD-009 R1 |
| I. | SUC1000H(RS) Frame Shop Drawing | - | ** DF-0750R, R2 | |
| J. | SUC800H(RE) Frame Shop Drawing | - | ** DF-0749R, R2 | |
| K | SUC 1000 H (RS) X1 X1 Template | | OFD-004 | |
| L | SUC 800 H X1 X1 TEMPLATE | | OFD-005 R1 | |

**The Frame Shop Drawings can be furnished approximately 10 days after notification of award.



ANCHOR POSITION CASE-2

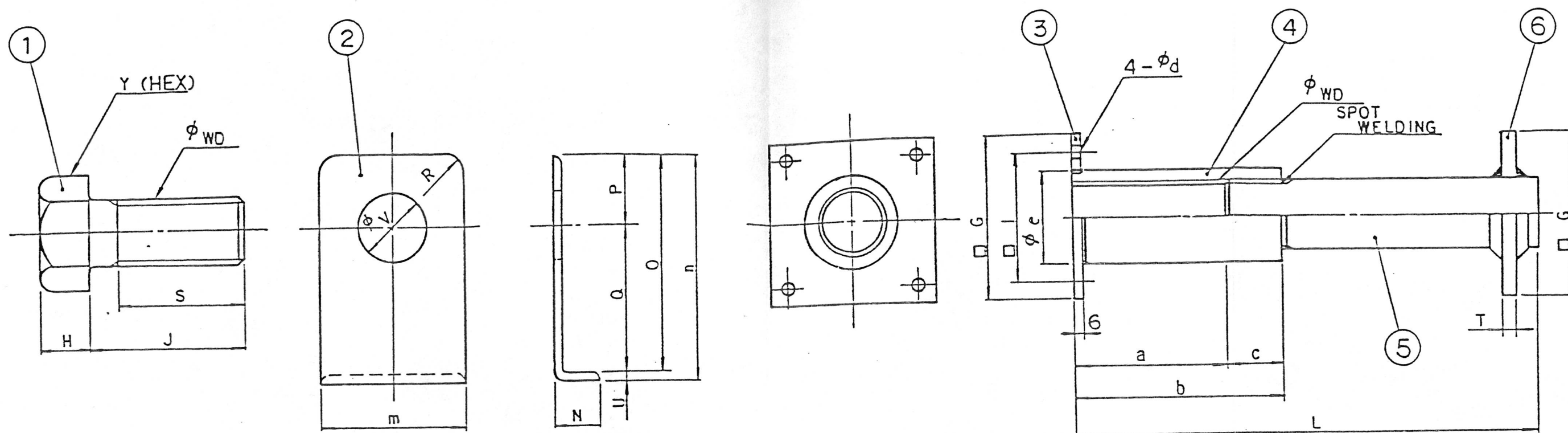


UNIT : FOOT (MM)

10	TENSION CHAIN	MILD STEEL (GALVANIZED)	2	34 φ ΔΔ
9	U-ANCHOR	CARBON STEEL (GALVANIZED)	2	50 φ ΔΔ
8	RUBBER FLEX CHAIN	RUBBER & MILD STEEL (GALVANIZED)	2	RFB040NS
7	FIXING BOLT	STAINLESS & MILD STEEL (GALVANIZED)	10 4	UNC-3/4"
6	CORNER PAD	SYNTHETIC RESIN	3	(30T)
5	FLAT PAD	SYNTHETIC RESIN	20	(30T)
4	BOLT & NUT	MILD STEEL (GALVANIZED)	6	UNC-1 1/2"
3	SUPER BOLT	STAINLESS & MILD STEEL (GALVANIZED)	6	UNC-1 1/2"
2	FRONTAL FRAME	MILD STEEL (PAINTED)	1	(2572x2682)
1	SUPER CELL FENDER	RUBBER & MILD STEEL	1	RS Δ
No.	NAME	MATERIAL	QUANTITY	REMARKS

FEB. 20 1990	4		H.C.		Y.B.
JAN. 18 1990	3		H.K.		Y.B.
DEC. 11 1989	2				Y.B.
NOV. 21 1989	1	RH → RS			Y.B.
DATE	No.	REVISION	APRVD.	CHKD.	RVSD.

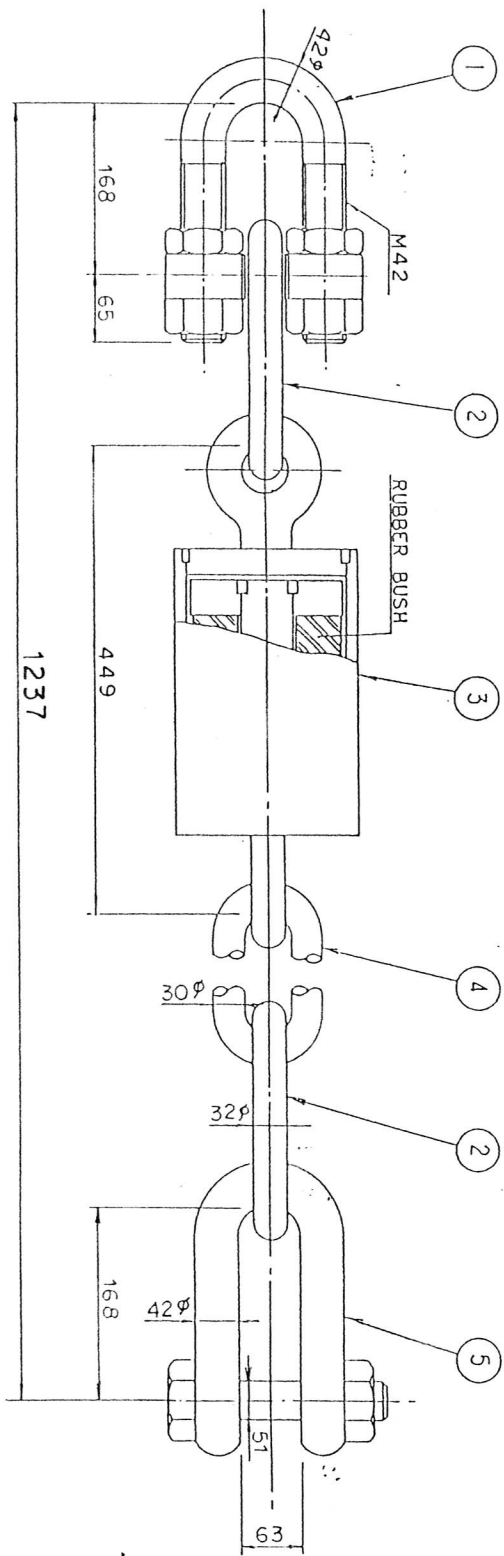
FOR			
ALABAMA STATE DOCKS, BLAKELY DOCK			
SUBJECT			
SUPER CELL FENDER Δ SUC 1000H (RS) x 1 x 1			
DATE	JULY 20, 1989	SCALE	1/30
APPROVED	CHECKED	DRAWN	
for H. Kawakami		Y.B.	
DWG No. 89F-290 R4		PART No.	
BRIDGESTONE CORPORATION			



SIZE	WD"	H	Y	J	S	a	b	c	d	e	G	I	T	L	m	N	n	O	P	Q	U	V	R
C 400H	7/8	15	35	65	55	70	95	25	6	32	65	50	6	175	50	21.5	80.5	76	24	52	4.5	25	15
C 500H	1	18	41	70	55	75	100	25	6	36	70	55	6	185	60	21.5	82.5	78	25	53	4.5	28	15
C 630H	1 1/8	20	46	75	60	75	105	30	6	38	75	60	9	210	65	19.5	109.5	105	33	72	4.5	34	15
SUC 800H	1 1/4	22	50	85	70	85	120	35	6	42	80	65	9	230	70	24.5	116.5	112	35	77	4.5	36	15
SUC 1000H	1 1/2	27	58	95	75	85	125	40	6	50	85	70	9	255	80	26	148	142	40	102	6	43	25
SUC 1150H	1 5/8	30	63	100	80	85	125	40	6	55	90	75	12	290	85	28	151	145	43	102	6	46	25
SUC 1250H	1 3/4	32	67	110	90	95	140	45	8	60	110	85	12	290	90	31	153	147	45	102	6	49	30
SUC 1450H	2	36	77	120	95	100	150	50	8	70	120	95	12	350	100	31	158	152	50	102	6	56	30
SUC 1600H	2	36	77	120	95	100	150	50	8	70	120	95	12	350	100	34	158	152	50	102	6	56	30
SUC 1700H	2 1/4	40	85	135	110	105	165	60	8	75	125	100	16	375	110	40	165	157	55	102	8	63	30
SUC 2000H	2 1/2	45	95	150	125	125	190	65	8	80	130	105	16	430	116	38	168	160	58	102	8	70	40
SUC 2250H	2 1/2	45	95	150	125	125	190	65	8	80	130	105	16	430	120	43	195	187	60	127	8	70	40
SUC 2500H	2 1/2	45	95	170	125	125	190	65	8	80	130	105	16	430	125	50	202	192	65	127	10	70	50
C 3000H	3	55	110	190	145	135	210	75	8	95	155	120	19	510	140	55	182	172	70	102	10	84	50

No.	NAME	MATERIAL	QUANTITY	REMARKS	ORIGINAL No.
6	ANCHOR PLATE	MILD STEEL	1		
5	ANCHOR BAR	MILD STEEL	1		
4	SLEEVE	STAINLESS STEEL	1		
3	FLANGE	MILD STEEL (GALVANIZED)	1		
2	WASHER	MILD STEEL (GALVANIZED)	1		
1	BOLT	MILD STEEL (GALVANIZED)	1		
DATE No. REVISION APRVD. CHKD. RVSD.					

FOR		ALABAMA STATE DOCKS, BLAKELY DOCK	
SUBJECT		SUPER BOLT FOR SUC 1000H, SUC 800H	
DATE	NOV. 8, 1989	SCALE	—
APPROVED	CHECKED	DRAWN	
DWG No. 89 FT-410		PART No.	
BRIDGESTONE CORPORATION			



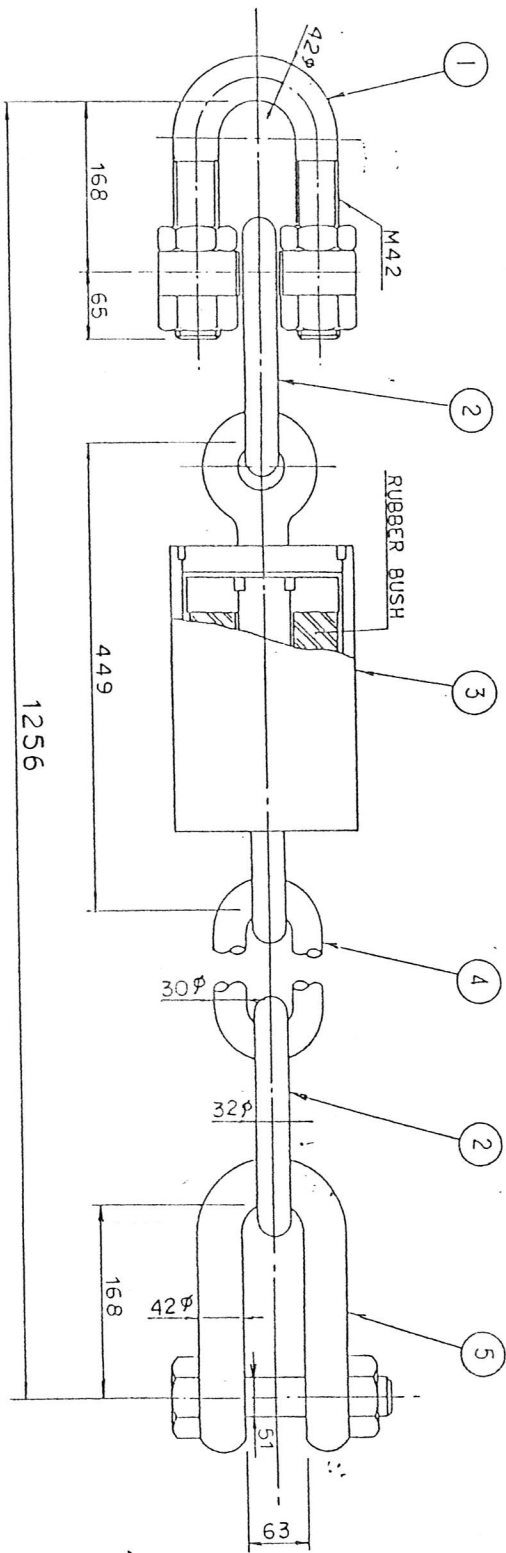
No.	NAME	MATERIAL	QTY	REMARKS
5	SHACKLE	CARBON STEEL (GALVANIZED)	1	SB 42
4	COMMON LINK	MILD STEEL (GALVANIZED)	1	30 φ
3	RUBBER FLEX	RUBBER & CARBON STEEL (GALVANIZED)	1	
2	END LINK	MILD STEEL (GALVANIZED)	2	32 φ
1	ADJUSTABLE SHACKLE	CARBON STEEL (GALVANIZED)	1	42 φ

DATE	NO.	REVISION	APPROV.	CHKD.	RSQD.

FOR
ALABAMA STATE DOCKS,
BLAKELY DOCK (FOR SUC1000H)

SUBJECT RUBBER FLEX CHAIN
RFBO40NS (S-TYPE)

DATE JAN.18,1990 SCALE —
APPROVED CHECKED DRAWN
HK M. Evans
DWG No. OFD - 006 PART No.
BRIDGESTONE CORPORATION

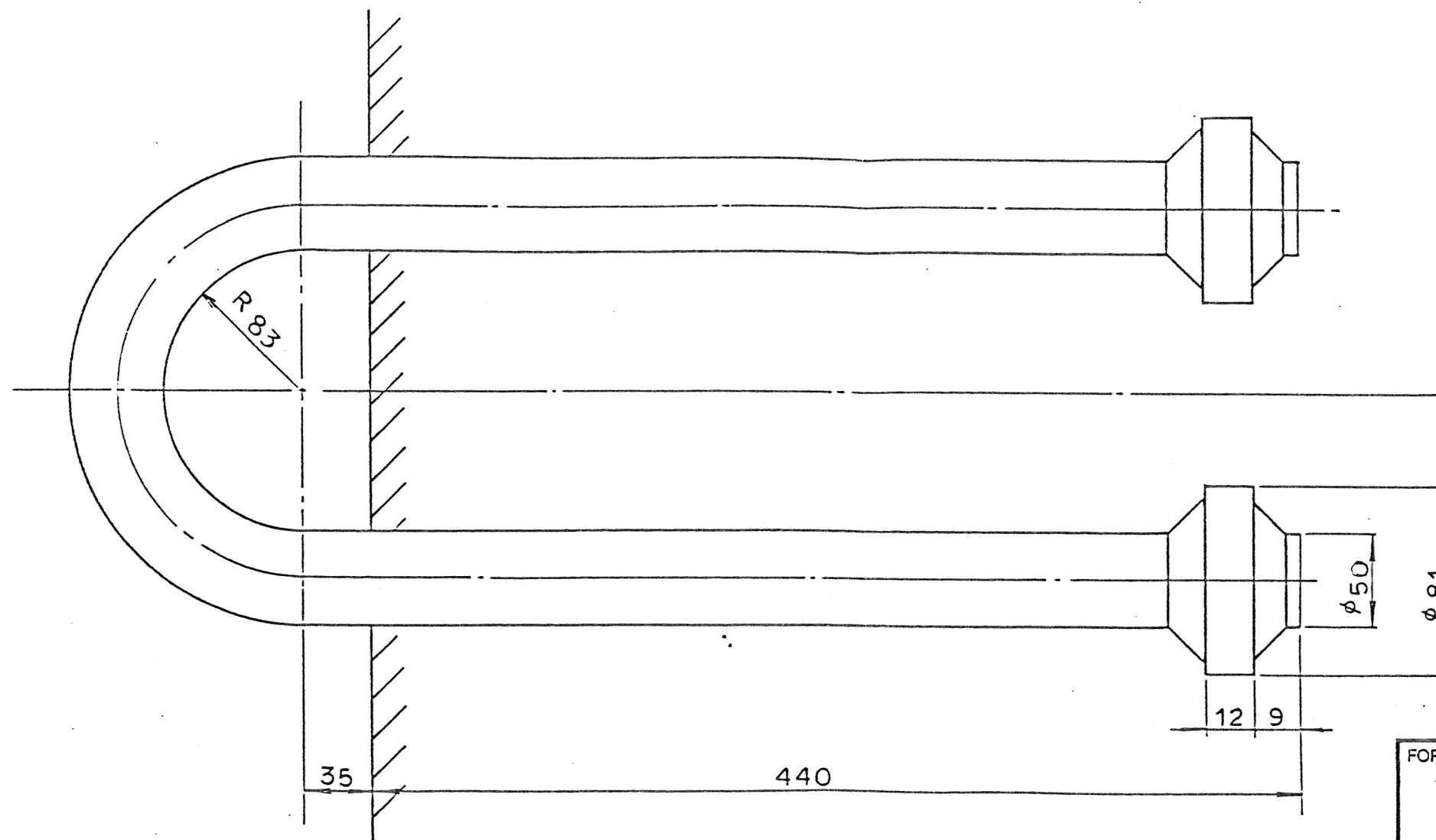


No.	NAME	MATERIAL	QTY	REMARKS
5	SHACKLE	CARBON STEEL (GALVANIZED)	1	SB 42
4	COMMON LINK	MILD STEEL (GALVANIZED)	1	30 φ
3	RUBBER FLEX	RUBBER & CARBON STEEL (GALVANIZED)	1	
2	END LINK	MILD STEEL (GALVANIZED)	2	32 φ
1	ADJUSTABLE SHACKLE	CARBON STEEL (GALVANIZED)	1	42 φ

DATE	NO.	REVISION	APPROV.	CHKD.	RSO.

FOR
ALABAMA STATE DOCKS,
BLAKELY DOCK (FOR SUC800H)
SUBJECT RUBBER FLEX CHAIN
RFBO40NS (S-TYPE)

DATE JAN. 18, 1990 SCALE —
APPROVED CHECKED DRAWN
H.K. P.D. Evans
DWG No. OF D-008 PART No.
BRIDGESTONE CORPORATION



FOR			
ALABAMA STATE DOCKS, BLAKELY DOCK			
SUBJECT			
U-ANCHOR			
FOR RFB 040 N · TENSION CHAIN			
DATE	NOV. 8, 1989	SCALE	—
APPROVED	CHECKED	DRAWN	
<i>[Signature]</i>		<i>[Signature]</i>	
DWG No.	89 FT- 411	PART No.	

No.	NAME	MATERIAL	QUANTITY	REMARKS	ORIGINAL No.	DATE	No.	REVISION	APRVD.	CHKD.	RVSD.
	U-ANCHOR	CARBON STEEL (GALVANIZED)		φ 50							

BRIDGESTONE CORPORATION

DATE	No.	REVISION	APRD.	CHKD.	INSD.
	✓				
	✓				
	✓				
	✓				

ORIGINAL NO. _____

FOR			
ALABAMA STATE DOCKS,			
BLAKELY DOCK (FOR SUC1000H)			
SUBJECT			
TENSION CHAIN			
DATE	JAN. 18, 1990	SCALE	—
APPROVED	CHECKED	DRAWN	
H.C.		M. Evans	
DWG No. OFD-007	PART No.		
BRIDGESTONE CORPORATION			

4	ADJUSTABLE SHACKLE	CARBON STEEL (GALVANIZED)	1	36 ϕ Δ	✓				
3	COMMON LINK	MILD STEEL (GALVANIZED)	1	28 ϕ Δ	✓				
2	END LINK	MILD STEEL (GALVANIZED)	2	32 ϕ Δ	220301 ✓				
1	SHACKLE	CARBON STEEL (GALVANIZED)	1	SBS 36 Δ	DATE No.	REVISION	APPROV	CHKD	ISSD
No.	NAME	MATERIAL	QUANTITY	REMARKS	ORIGINAL No.				

FOR				
ALABAMA STATE DOCKS,				
BLAKELY DOCK (FOR SUC800				
SUBJECT				
TENSION CHAIN				
DATE	JAN. 18, 1990	SCALE	—	
APPROVED	CHECKED	DRAWN		
H.C.		M. Evans		
DWG No.	OFD - 00GR1	PART No.		
BRIDGESTONE CORPORATION				