



ALABAMA PORT AUTHORITY

PORT OF MOBILE

DRAWING SCHEDULE:

4224-CO	-	COVER SHEET
4224-GA1	-	DUAL BARGE SHIFTER SITE PLAN
4224-GA2	-	DUAL BARGE SHIFTER GENERAL ARRANGEMENT
4224-GA3	-	DUAL BARGE SHIFTER

DUAL BARGE SHIFTER AND BARGE HAUL SYSTEM EQUIPMENT SUPPLY

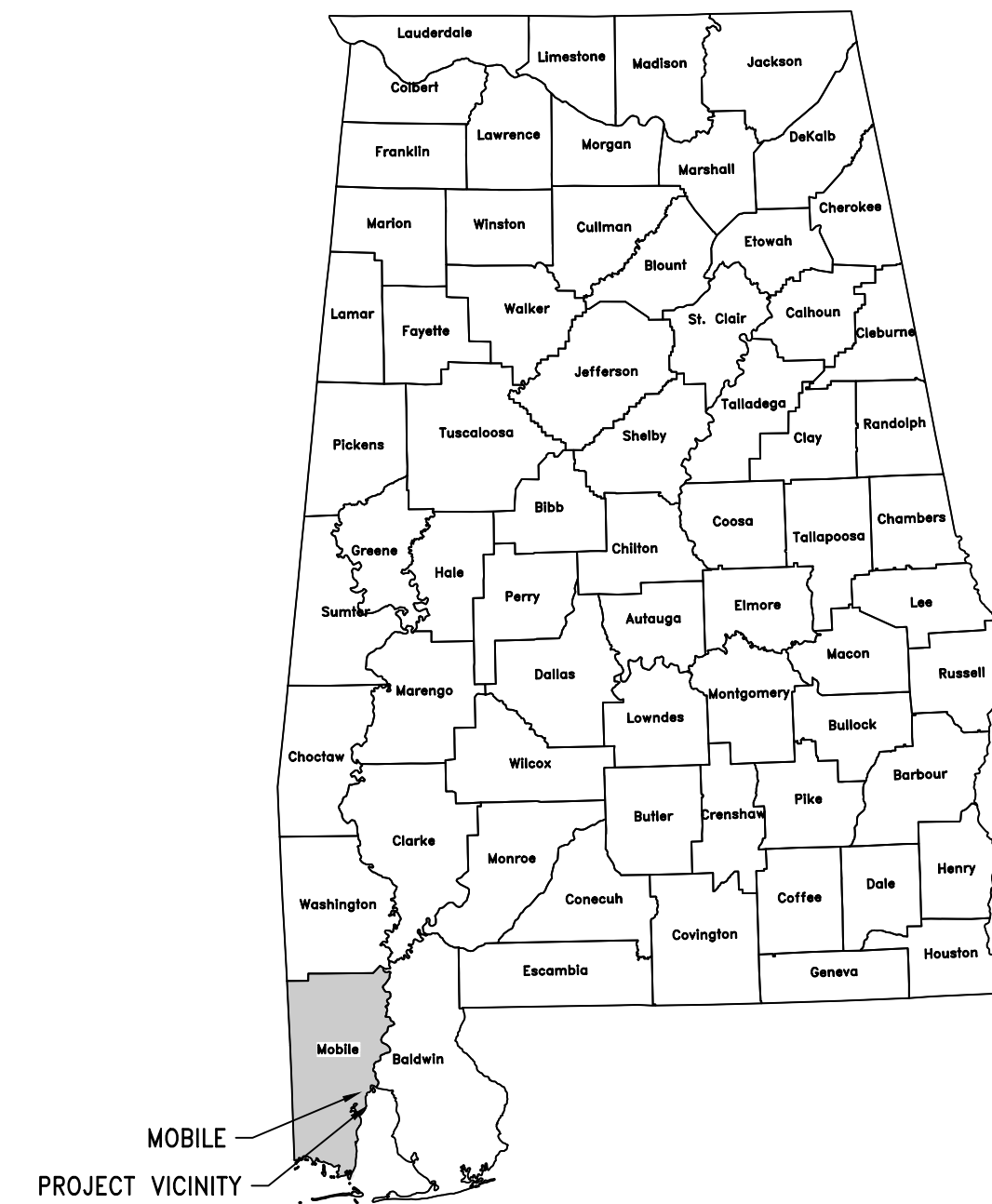
McDUFFIE COAL TERMINAL
MOBILE, ALABAMA
(10873-TASK 2 MARCH 2023)

KAY IVEY, GOVERNOR
 JOHN C. DRISCOLL, DIRECTOR AND C.E.O

ALABAMA STATE PORT AUTHORITY - BOARD OF DIRECTORS
 BESTOR WARD, CHAIRMAN

ALVIN K. HOPE II, 1st VICE CHAIR
 DARYL H. DEWBERRY
 TONY COCHRAN
 CARL JAMISON

BEN C. STIMPSON, 2nd VICE CHAIR
 DR. PATRICIA SIMS
 HORACE HORN
 MAYOR SANDY STIMPSON

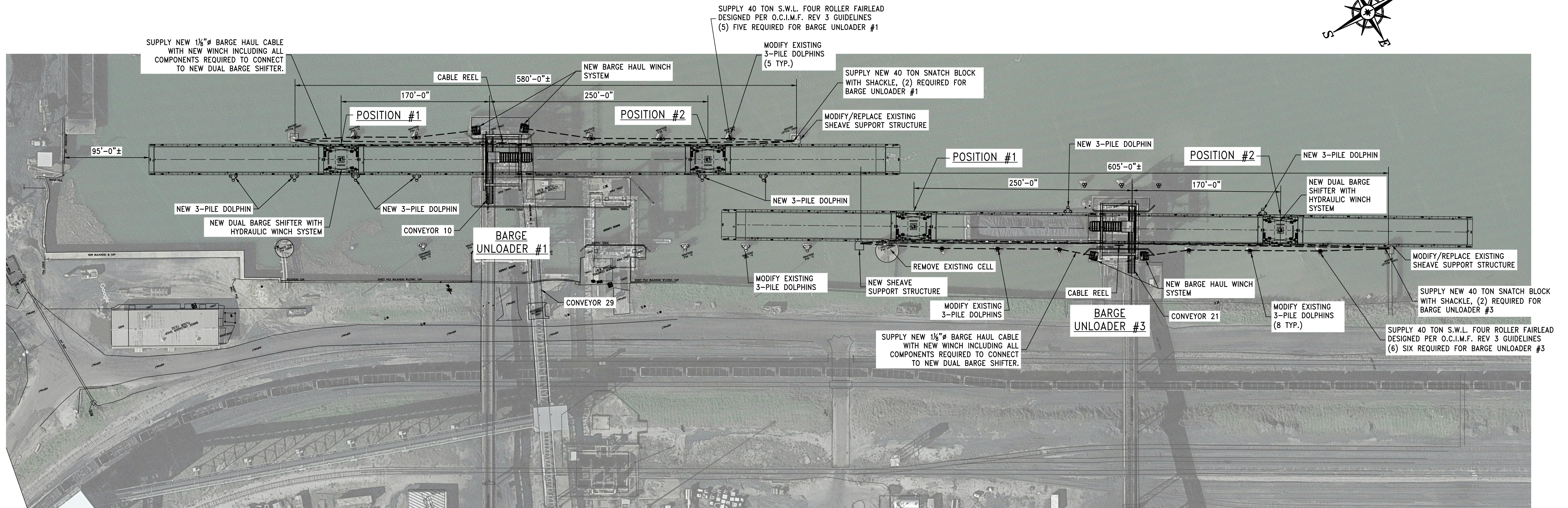
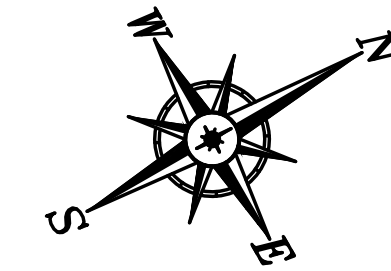


LOCATION MAP
 N.T.S.

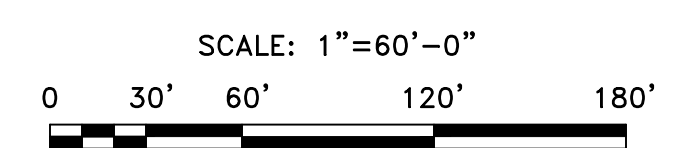
© COWLES, MURPHY, GLOVER & ASSOCIATES, INC., 2023
 CONFIDENTIAL, VALUABLE, AND PROPRIETARY INFORMATION

						457 St. Michael St., Mobile, AL 36602 13 Thrash Rd., LaGrange, GA 30241 11880 Cranston Dr. Ste 102, Arlington, TN 38002 Alabama (251) 433-1611 Georgia (706) 302-2831 Tennessee (901) 290-5444		PROJECT DUAL BARGE SHIFTER AND BARGE HAUL EQUIPMENT SUPPLY McDUFFIE COAL TERMINAL MOBILE, ALABAMA		TITLE COVER SHEET			
SCALE		DRAWN BY		DATE		SHEET		REV.					
NTS		JWM		03/01/23		— of —		A					
JOB NO.		CHECKED BY		DATE		DRAWING NUMBER							
4224		JDG		03/31/23		4224-CO							
REV.		DESCRIPTION		DATE		BY		CHK'D					
A		ISSUED FOR BID		03/31/23		JWM		GDEC					

Z:\1200-4299\4224-ASP\A-McDuffie Barge Haul\Design\4224-CO.dwg, 3/30/2023 9:08:59 AM



DUAL BARGE SHIFTER – PLAN
1"=60'



© COWLES, MURPHY, GLOVER & ASSOCIATES, INC., 2023
CONFIDENTIAL, VALUABLE, AND PROPRIETARY INFORMATION

REV.	DESCRIPTION	DATE	BY	CHK'D
A	ISSUED FOR BID	03/31/23	JDG	GDEC

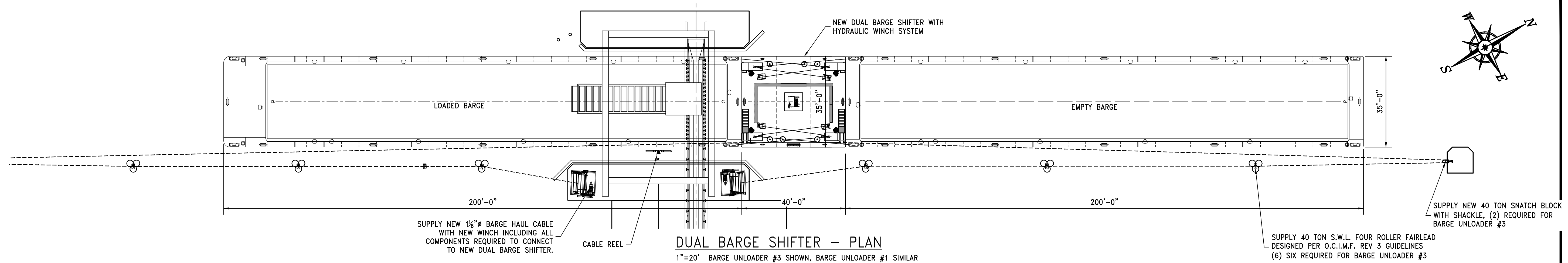
Cowles, Murphy, Glover & ASSOCIATES
A Full Service Engineering Firm
PERFORMANCE • RELIABILITY • EXPERIENCE

457 St. Michael St., Mobile, AL 36602
13 Thrash Rd., LaGrange, GA 30241
11880 Cranston Dr. Ste 102, Arlington, TN 38002
Alabama (251) 433-1611
Georgia (706) 302-2831 Tennessee (901) 290-5444

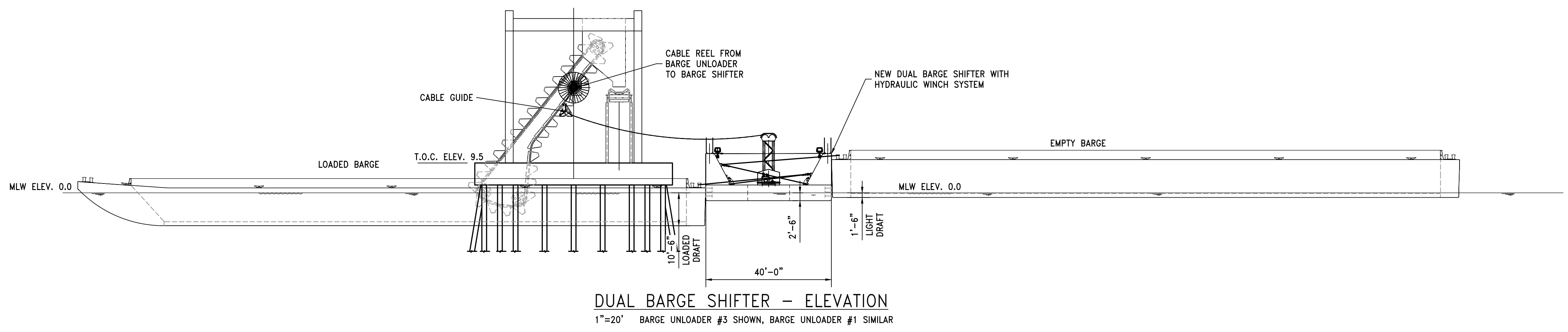
PROJECT
DUAL BARGE SHIFTER AND BARGE HAUL EQUIPMENT SUPPLY
McDUFFIE COAL TERMINAL
MOBILE, ALABAMA

TITLE DUAL BARGE SHIFTER SITE PLAN				
SCALE NOTED	DRAWN BY JDG	DATE 1/22/23	SHEET — OF —	22x34 REV. A
JOB NO. 4224-23	CHECKED BY GDEC	DATE 3/17/23	DRAWING NUMBER 4224-GA1	

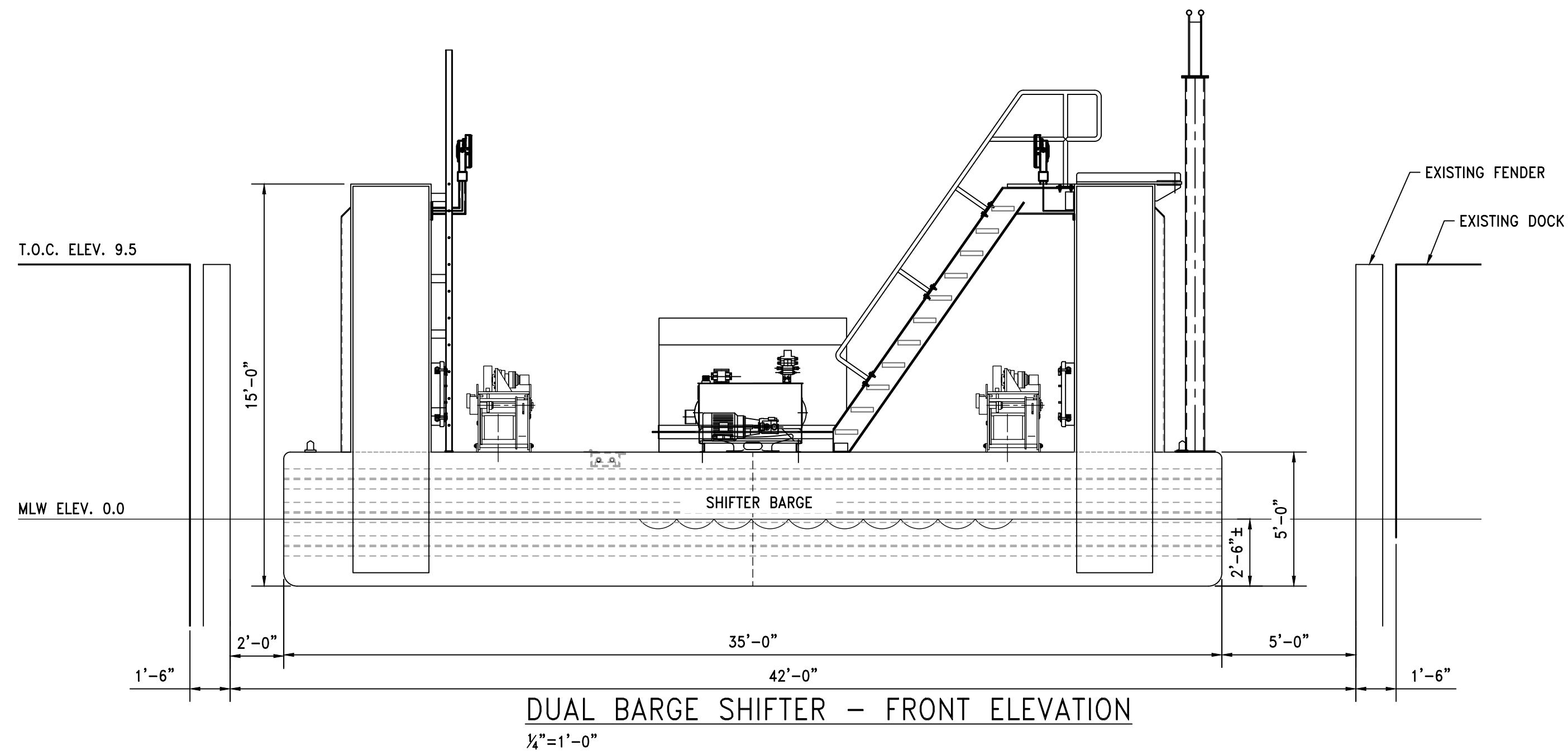
Z:\1200-4299\4224-ASP\A-McDuffie Barge Haul\Design\4224-GA1.dwg, 3/30/2023 9:47:06 AM



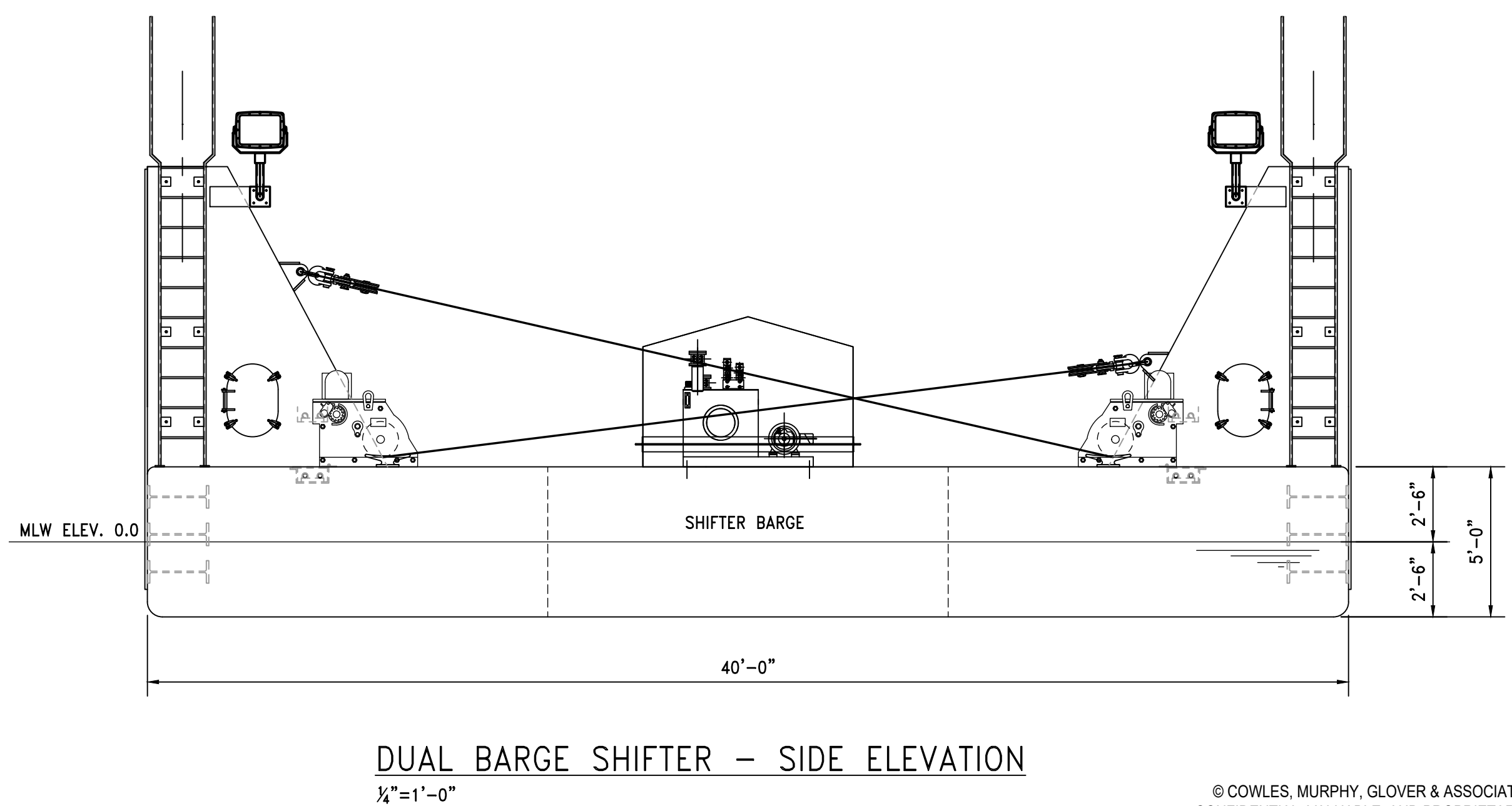
DUAL BARGE SHIFTER - PLAN
 1"=20' BARGE UNLOADER #3 SHOWN, BARGE UNLOADER #1 SIMILAR



DUAL BARGE SHIFTER - ELEVATION
 1"=20' BARGE UNLOADER #3 SHOWN, BARGE UNLOADER #1 SIMILAR



DUAL BARGE SHIFTER - FRONT ELEVATION
 1/4"=1'-0"



DUAL BARGE SHIFTER - SIDE ELEVATION
 1/4"=1'-0"

© COWLES, MURPHY, GLOVER & ASSOCIATES, INC. 2023
 CONFIDENTIAL, VALUABLE, AND PROPRIETARY INFORMATION

REV.	DESCRIPTION	DATE	BY	CHK'D
A	ISSUED FOR BID	03/31/23	JDG	GDEC

Cowles, Murphy, Glover & ASSOCIATES
A Full Service Engineering Firm

PERFORMANCE • RELIABILITY • EXPERIENCE

457 St. Michael St., Mobile, AL 36602
 13 Thrash Rd., LaGrange, GA 30241
 11880 Cranston Dr. Ste 102, Arlington, TN 38002
 Alabama (251) 433-1611
 Georgia (706) 302-2831 Tennessee (901) 290-5444

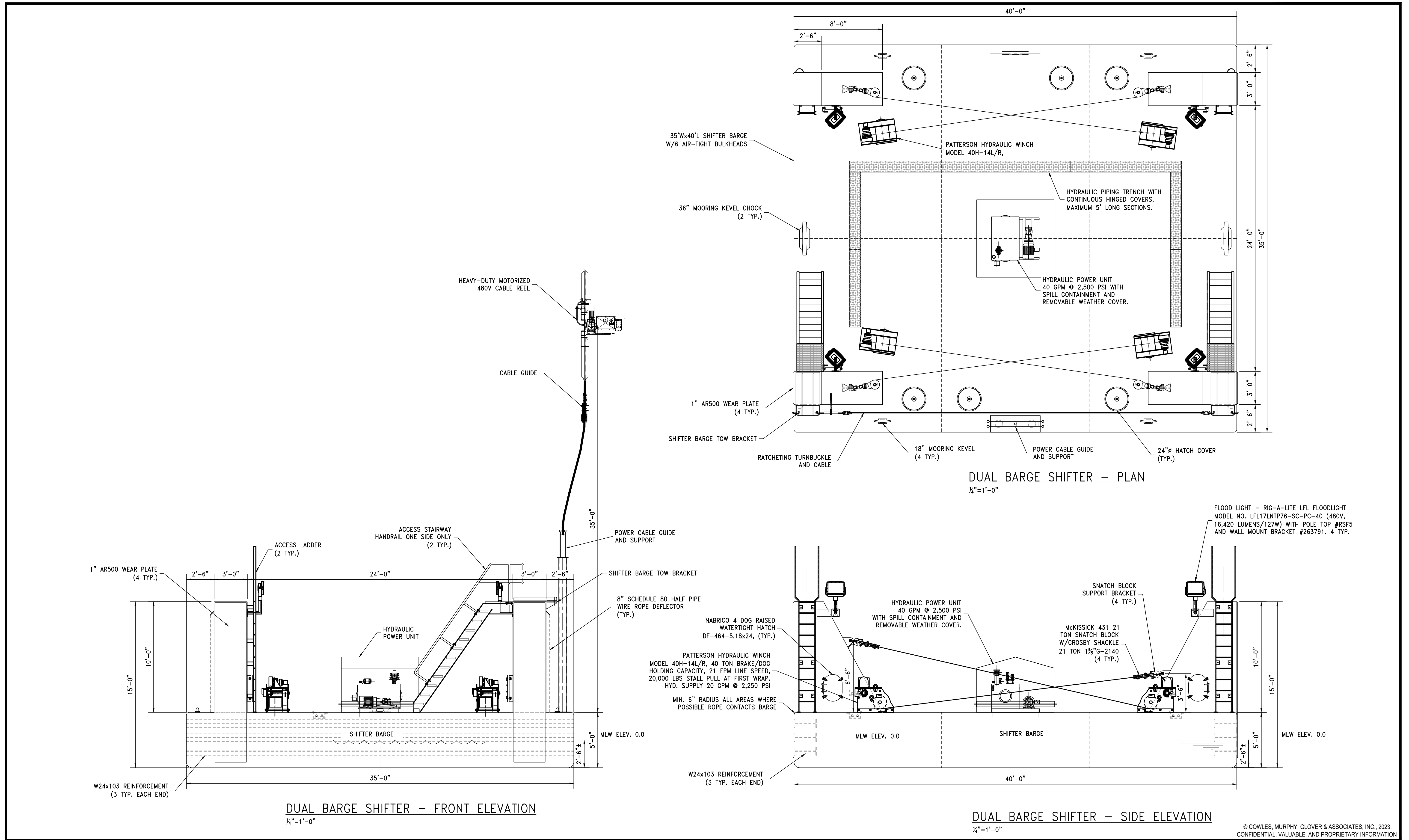
PROJECT

DUAL BARGE SHIFTER AND BARGE HAUL EQUIPMENT SUPPLY

McDUFFIE COAL TERMINAL MOBILE, ALABAMA

TITLE				
DUAL BARGE SHIFTER				
SCALE	NOTED	DRAWN BY	DATE	SHEET
		JDG	1/22/23	22x34 REV. A
JOB NO.	CHECKED BY	DATE	DRAWING NUMBER	
4224-23	GDEC	03/17/23	4224-GA2	

Z:\1200-4299\4224-ASP\A_McDuffie Barge Haul\Design\4224-GA2.dwg, 3/30/2023 10:00:59 AM



REV.	DESCRIPTION	DATE	BY	CHK'D
A	ISSUED FOR BID	03/31/23	JDG	GDEC

Cowles, Murphy, Glover & ASSOCIATES
A Full Service Engineering Firm

457 St. Michael St., Mobile, AL 36602
13 Thrash Rd., LaGrange, GA 30241
11880 Cranston Dr. Ste 102, Arlington, TN 38002
Alabama (251) 433-1611
Georgia (706) 302-2831 Tennessee (901) 290-5444

PERFORMANCE • RELIABILITY • EXPERIENCE

PROJECT

DUAL BARGE SHIFTER AND BARGE HAUL EQUIPMENT SUPPLY

McDUFFIE COAL TERMINAL
MOBILE, ALABAMA

TITLE				
DUAL BARGE SHIFTER				
SCALE	DRAWN BY	DATE	SHEET	REV.
NOTED	JDG	1/22/23	-	22x34
JOB NO.	CHECKED BY	DATE	DRAWING NUMBER	A
4224-23	GDEC	03/17/23	4224-GA3	

Z:\1200-4299\4224-ASP\A_McDuffie Barge Haul\Design\4224-CA3.dwg, 3/30/2023 10:07:40 AM

© COWLES, MURPHY, GLOVER & ASSOCIATES, INC. 2023
CONFIDENTIAL, VALUABLE, AND PROPRIETARY INFORMATION