

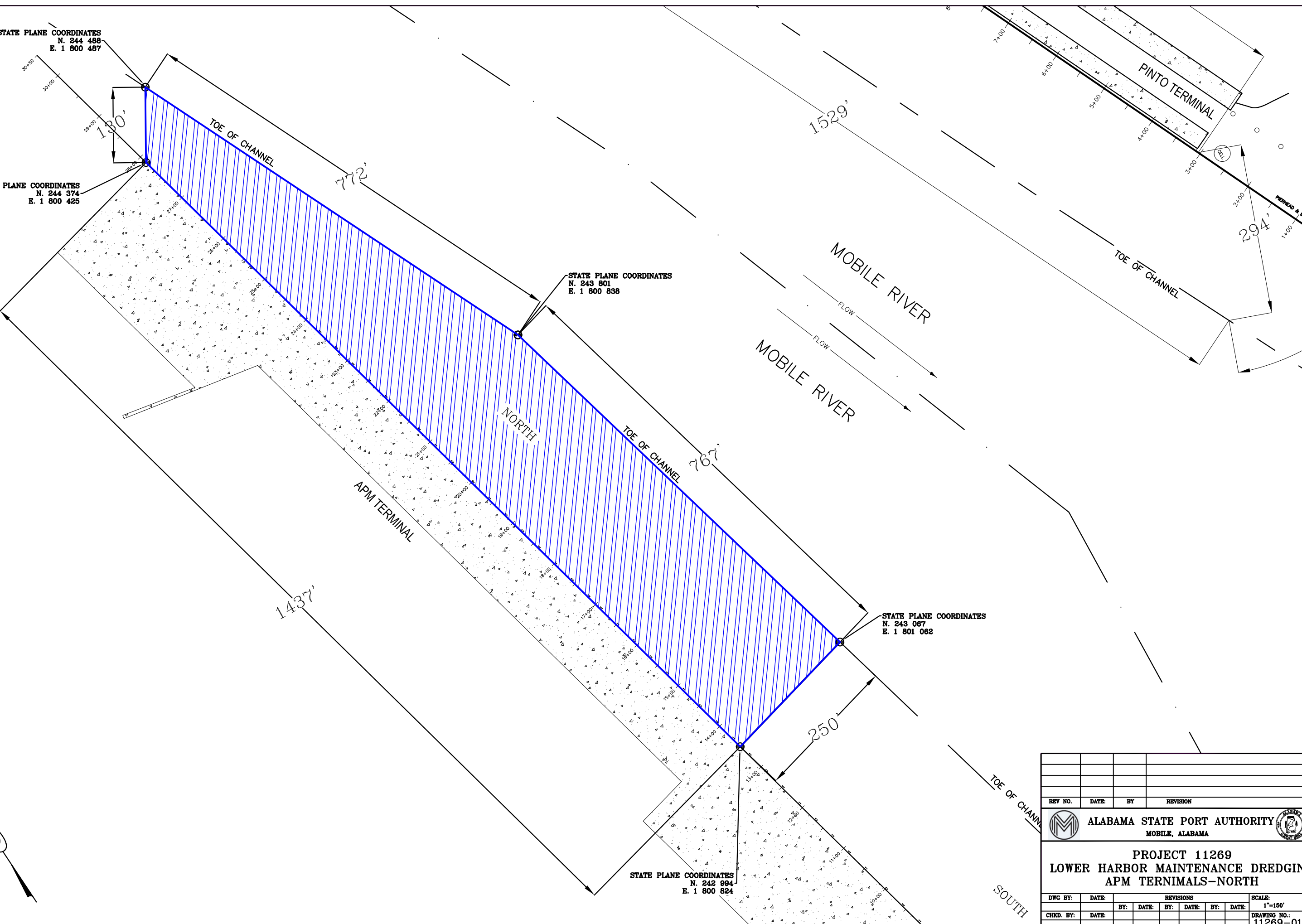
STATE PLANE COORDINATES  
N. 244 488  
E. 1 800 487


STATE PLANE COORDINATES  
N. 244 374  
E. 1 800 425

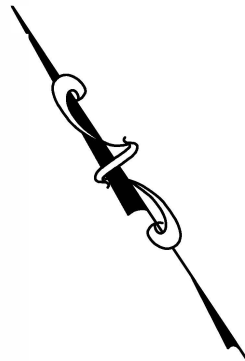
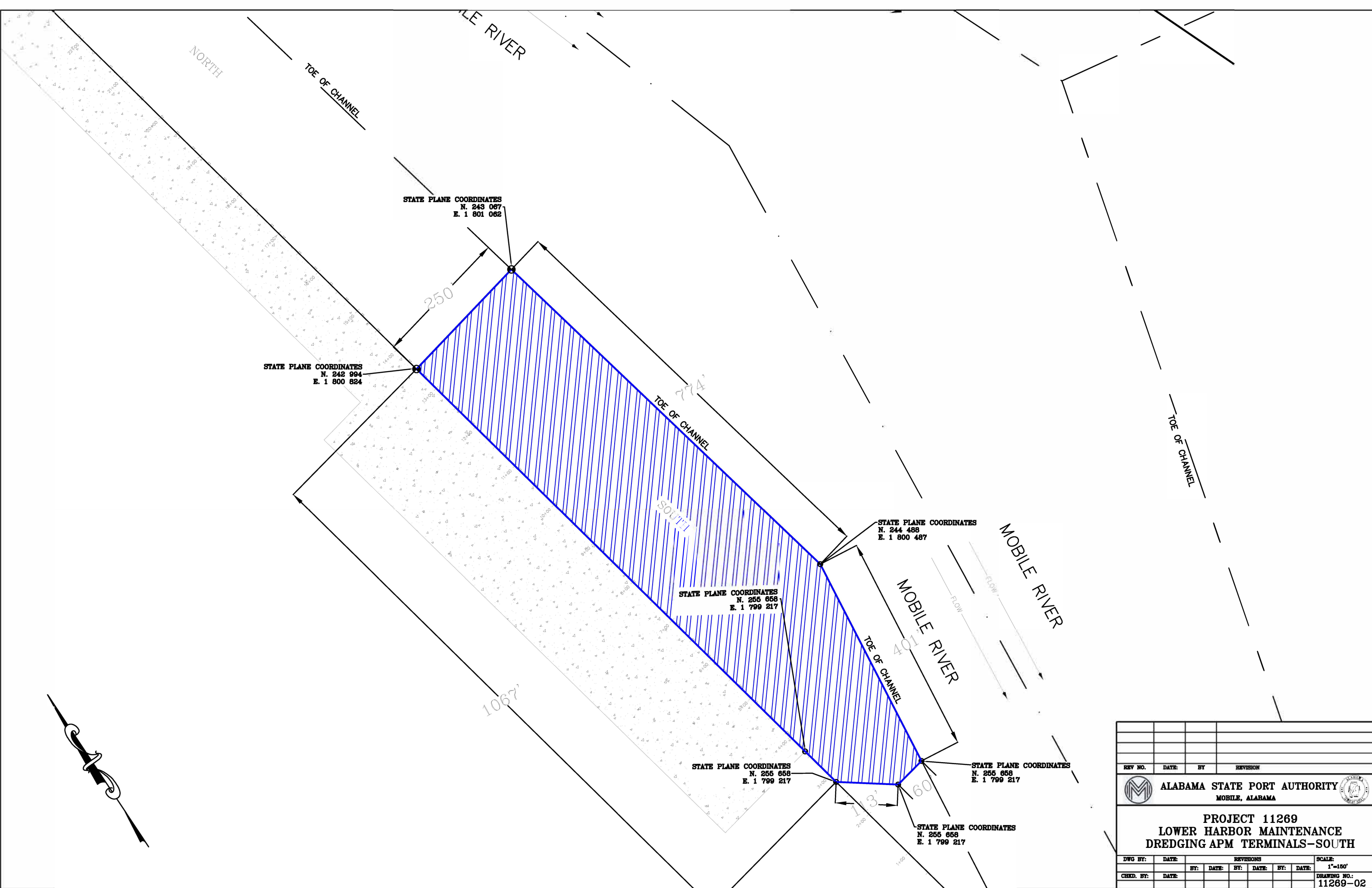
STATE PLANE COORDINATES  
N. 243 801  
E. 1 800 838

STATE PLANE COORDINATES  
N. 243 067  
E. 1 801 062

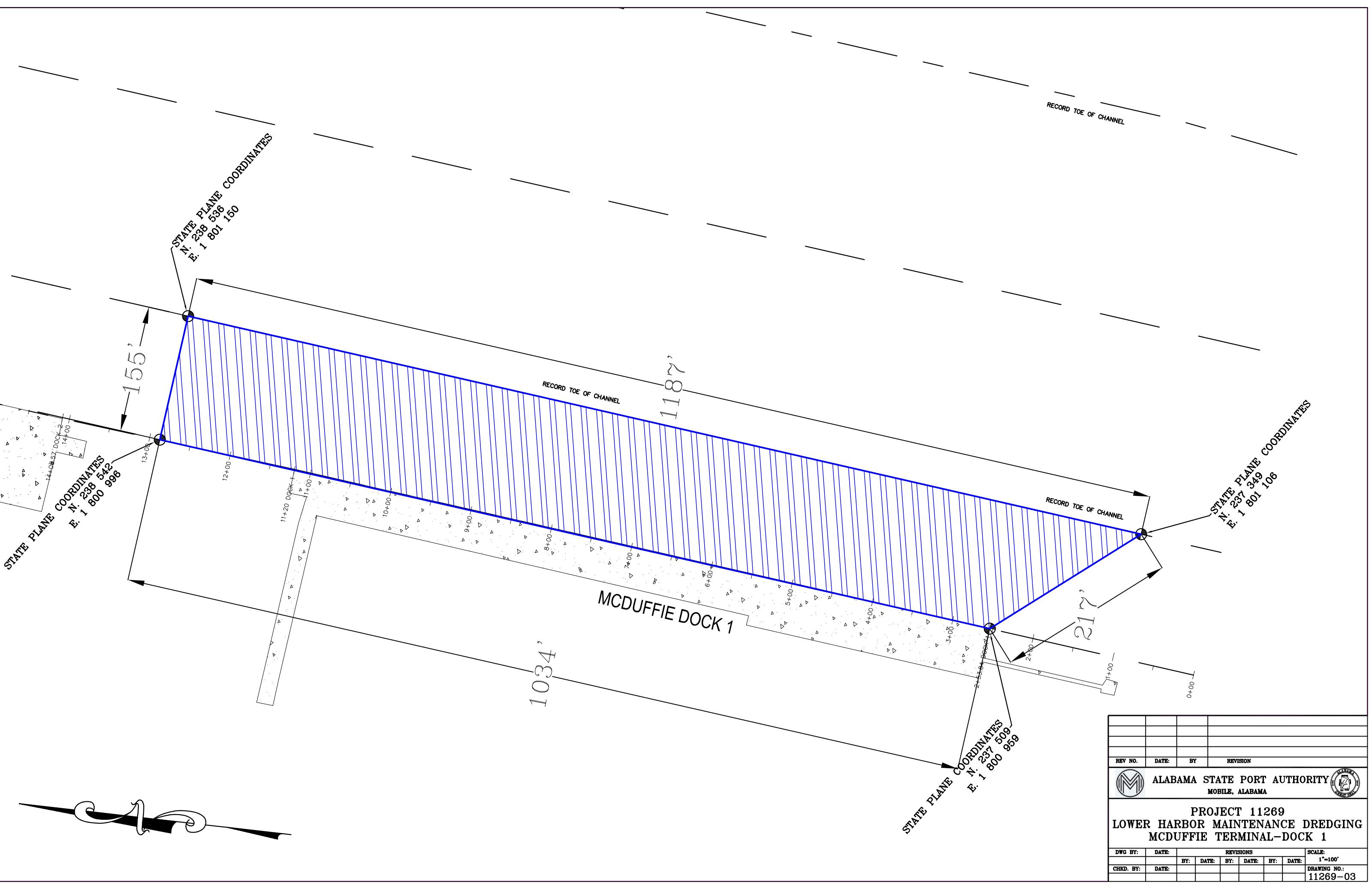
STATE PLANE COORDINATES  
N. 242 994  
E. 1 800 824




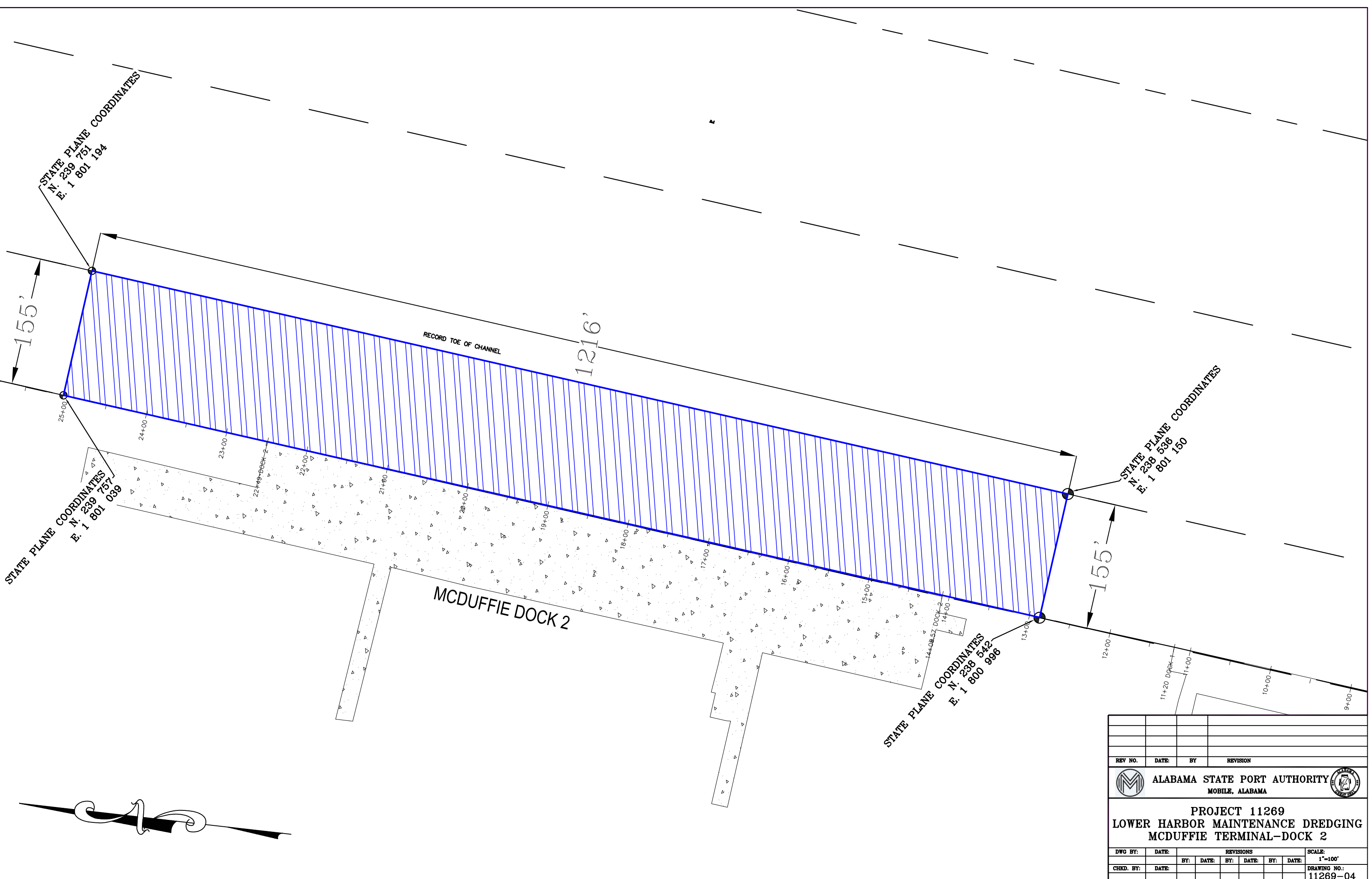
REV NO.	DATE	BY	REVISION
 <b>ALABAMA STATE PORT AUTHORITY</b> MOBILE, ALABAMA			
<b>PROJECT 11269</b> <b>LOWER HARBOR MAINTENANCE DREDGING</b> <b>APM TERMINALS-NORTH</b>			
DWG BY:	DATE:	REVISIONS	SCALE:
		BY: DATE: BY: DATE: BY: DATE:	1"=150'
CHKD. BY:	DATE:		DRAWING NO.:
			11269-01



REV NO.	DATE	BY	REVISION
<b>ALABAMA STATE PORT AUTHORITY</b> MOBILE, ALABAMA			
<b>PROJECT 11269</b> <b>LOWER HARBOR MAINTENANCE</b> <b>DREDGING APM TERMINALS-SOUTH</b>			
DWG BY:	DATE:	REVISIONS	SCALE:
			1"=150'
CHKD BY:	DATE:	BY:	DATE:
DRAWING NO.:			11269-02



REV NO.	DATE	BY	REVISION
 <b>ALABAMA STATE PORT AUTHORITY</b> MOBILE, ALABAMA			
<b>PROJECT 11269</b> <b>LOWER HARBOR MAINTENANCE DREDGING</b> <b>MCDUFFIE TERMINAL-DOCK 1</b>			
DWG BY:	DATE:	REVISIONS	SCALE:
		BY: DATE: BY: DATE: BY: DATE:	1"=100'
CHKD. BY:	DATE:		DRAWING NO.:
			11269-03



STATE PLANE COORDINATES  
 N. 239 751  
 E. 1 801 194

STATE PLANE COORDINATES  
 N. 239 751  
 E. 1 801 039

STATE PLANE COORDINATES  
 N. 238 542  
 E. 1 800 996

STATE PLANE COORDINATES  
 N. 238 536  
 E. 1 801 150


155'

1216'

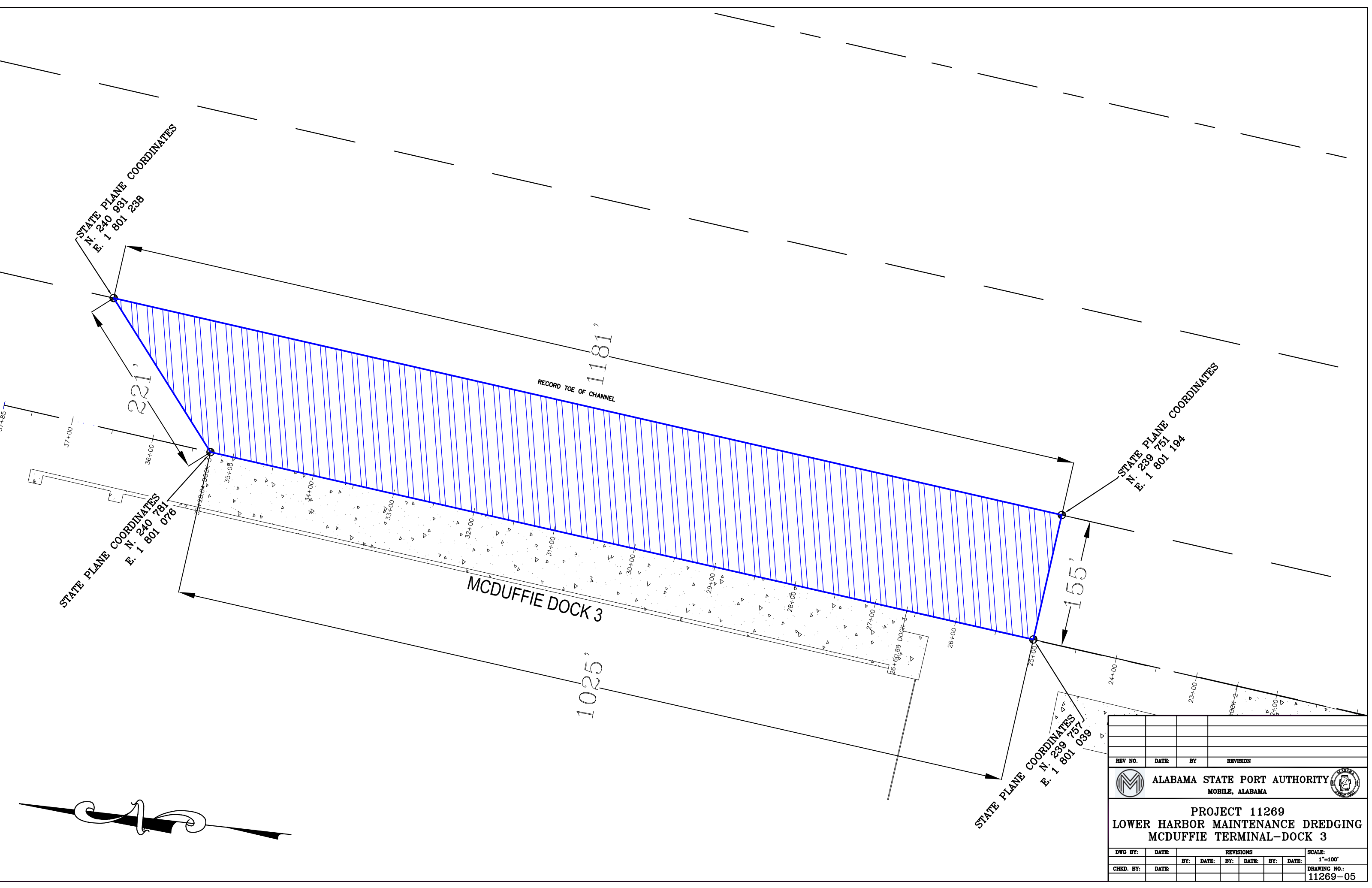
155'

RECORD TOE OF CHANNEL


MCDUFFIE DOCK 2

REV NO.	DATE	BY	REVISION
 <b>ALABAMA STATE PORT AUTHORITY</b> MOBILE, ALABAMA			
<b>PROJECT 11269</b> <b>LOWER HARBOR MAINTENANCE DREDGING</b> <b>MCDUFFIE TERMINAL-DOCK 2</b>			
DWG BY:	DATE:	REVISIONS	SCALE:
		BY: DATE: BY: DATE: BY: DATE:	1"=100'
CHKD. BY:	DATE:		DRAWING NO.:
			11269-04





REV NO.	DATE	BY	REVISION


**ALABAMA STATE PORT AUTHORITY**  
 MOBILE, ALABAMA

**PROJECT 11269**  
**LOWER HARBOR MAINTENANCE DREDGING**  
**MCDUFFIE TERMINAL-DOCK 3**

DWG BY:	DATE:	BY:	DATE:	BY:	DATE:	BY:	DATE:	SCALE:
								1"=100'

CHKD. BY:    DATE:    DRAWING NO.: **11269-05**

STATE PLANE COORDINATES  
 N. 239 864  
 E. 1 798 257

STATE PLANE COORDINATES  
 N. 239 921  
 E. 1 798 112

STATE PLANE COORDINATES  
 N. 239 840  
 E. 1 798 041

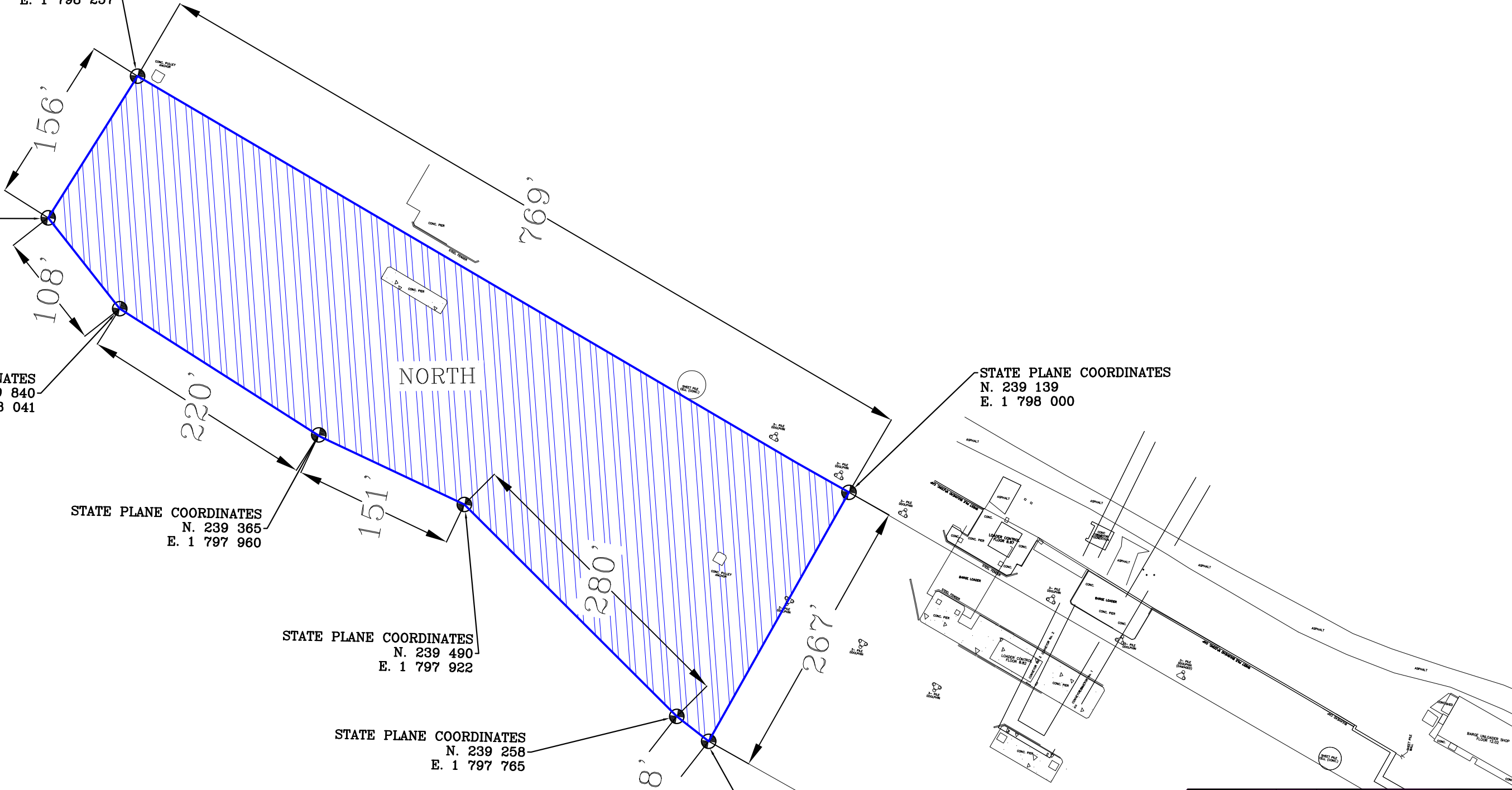
STATE PLANE COORDINATES  
 N. 239 365  
 E. 1 797 960

STATE PLANE COORDINATES  
 N. 239 490  
 E. 1 797 922

STATE PLANE COORDINATES  
 N. 239 258  
 E. 1 797 765

STATE PLANE COORDINATES  
 N. 239 139  
 E. 1 798 000

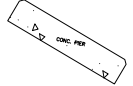
STATE PLANE COORDINATES  
 N. 239 225  
 E. 1 797 747



REV NO.	DATE	BY	REVISION

<b>ALABAMA STATE PORT AUTHORITY</b> MOBILE, ALABAMA			
<b>PROJECT 11269</b> <b>LOWER HARBOR MAINTENANCE DREDGING</b> <b>MCDUFFIE BARGE UNLOADERS-NORTH</b>			
DWG BY:	DATE:	REVISIONS	SCALE:
		BY: DATE: BY: DATE: BY: DATE:	1"=100'
CHKD. BY:	DATE:		DRAWING NO.:
			11269-06



STATE PLANE COORDINATES  
 N. 239 139  
 E. 1 798 000

STATE PLANE COORDINATES  
 N. 239 225  
 E. 1 797 747

STATE PLANE COORDINATES  
 N. 237 349  
 E. 1 801 106

STATE PLANE COORDINATES  
 N. 238 768  
 E. 1 797 594

STATE PLANE COORDINATES  
 N. 238 829  
 E. 1 797 411

STATE PLANE COORDINATES  
 N. 238 570  
 E. 1 797 329

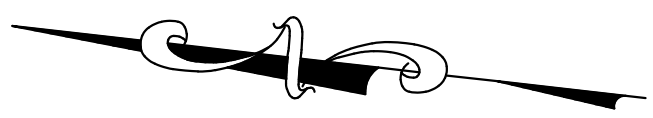
267'


481'

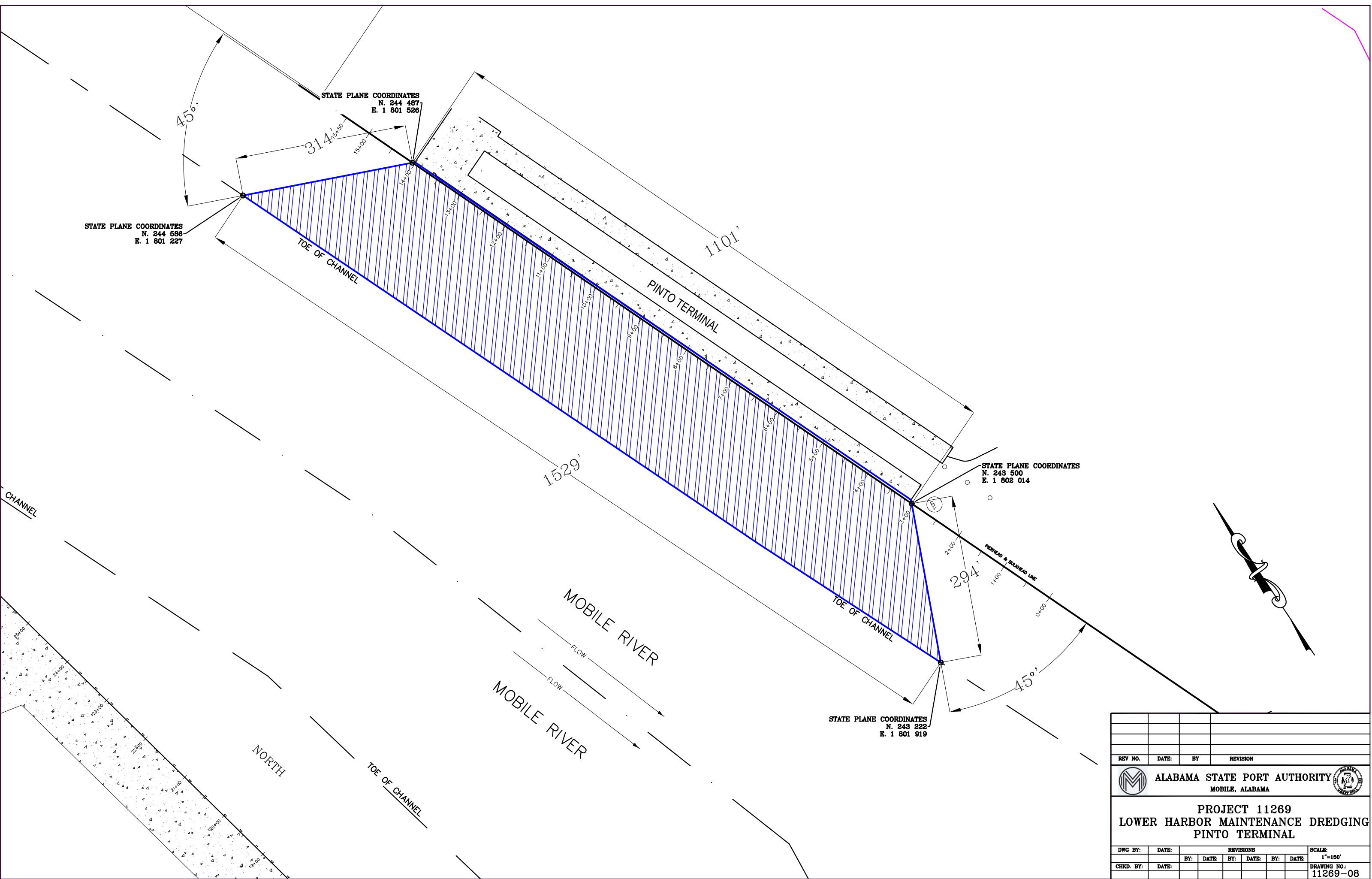
193'

271'

445'



REV NO.	DATE	BY	REVISION
 <b>ALABAMA STATE PORT AUTHORITY</b> MOBILE, ALABAMA			
<b>PROJECT 11269</b> <b>LOWER HARBOR MAINTENANCE DREDGING</b> <b>MCDUFFIE BARGE UNLOADERS-SOUTH</b>			
DWG BY:	DATE:	REVISIONS	SCALE:
		BY: DATE: BY: DATE: BY: DATE:	1"=100'
CHKD. BY:	DATE:		DRAWING NO.:
			11269-07




STATE PLANE COORDINATES  
 N. 244 586  
 E. 1 801 227

STATE PLANE COORDINATES  
 N. 244 487  
 E. 1 801 526

STATE PLANE COORDINATES  
 N. 243 500  
 E. 1 802 014

STATE PLANE COORDINATES  
 N. 243 222  
 E. 1 801 919

REV NO.	DATE	BY	REVISION
 <b>ALABAMA STATE PORT AUTHORITY</b> MOBILE, ALABAMA			
<b>PROJECT 11269</b> <b>LOWER HARBOR MAINTENANCE DREDGING</b> <b>PINTO TERMINAL</b>			
DWG BY:	DATE:	REVISIONS	SCALE:
			1"=150'
CHKD. BY:	DATE:		DRAWING NO.:
			11269-08



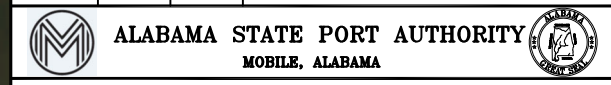


**LEGEND**

- McDuffie Terminal to McDuffie DMMA (4,077 Feet)
- McDuffie Terminal to Pinto DMMA (7,784 Feet)
- McDuffie Terminal to Alabama Shipyard DMMA (9,989 Feet)
- APMT to McDuffie DMMA (8,358 Feet)
- APMT to Pinto DMMA (4,497 Feet)
- APMT to Alabama Shipyard DMMA (7,052 Feet)
- Pinto Terminal to Pinto DMMA (2,258 Feet)
- Pinto Terminal to Alabama Shipyard DMMA (4,923 Feet)
- Pinto Terminal to McDuffie DMMA (8,999 Feet)
- Barge Unloaders to McDuffie DMMA (2,502 Feet)

NOTE: THE PIPE ROUTES AND DISTANCES DEPICTED IN THIS DRAWING ARE FOR REFERENCE ONLY. MEANS AND METHODS FOR OVERALL FEASIBILITY OF SAID ROUTES ARE THE SOLE RESPONSIBILITY OF THE CONTRACTOR.

REV NO.	DATE	BY	REVISION



**PROJECT 11269  
LOWER HARBOR MAINTENANCE DREDGING  
HISTORIC PIPE ROUTE**

DWG BY:	DATE:	REVISIONS				SCALE:
		BY:	DATE:	BY:	DATE:	N.T.S

**DRAWING NO.:  
11269-09**