


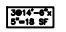
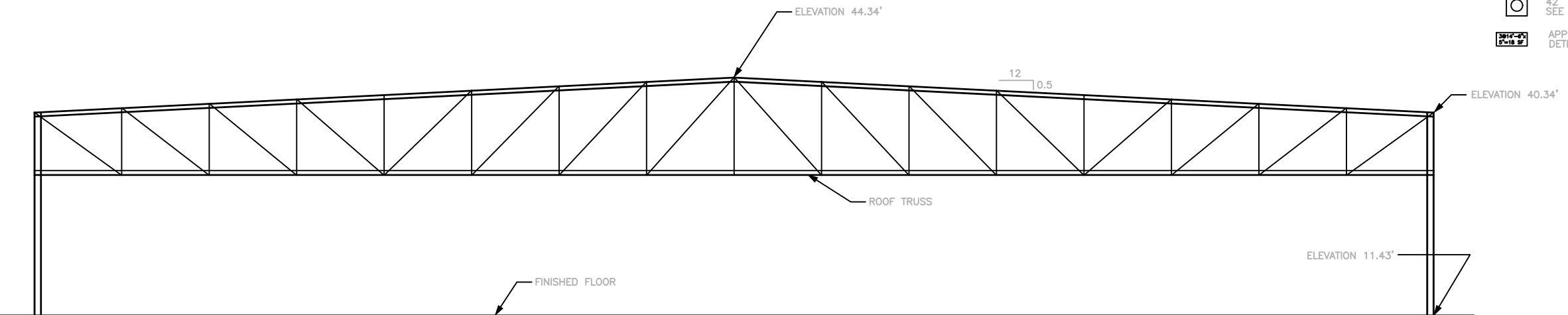


ROOF PLAN

LEGEND

-  ROOFING SYSTEM TO BE REPLACED (APPROX. 105,000 SF)
EXISTING BUILT-UP ROOF REMOVAL (APPROX. 97,000 SF (BID ADDITIVE 1))
-  TRANSLUCENT PANEL
SEE DETAIL A, DWG ED-1-201
-  42" ROOF VENT
SEE DETAIL F, DWG ED-1-201
-  APPROX. LOCATIONS AND QUANTITY OF
DETERIORATED TIMBER DECKING



SECTION A-A

REVISION NO.	DESCRIPTION	DATE	BY:

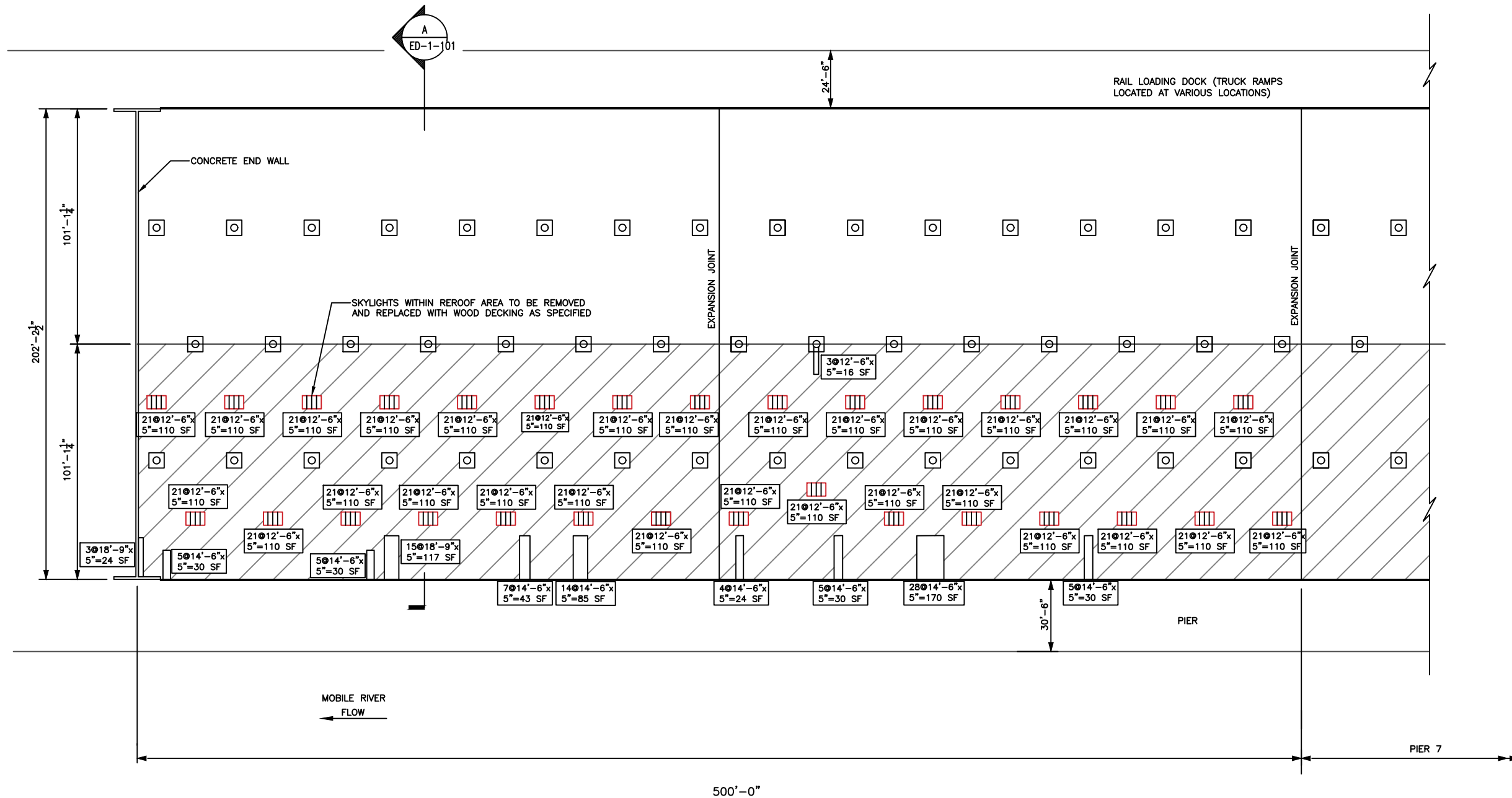
**PIERS 6 & 7 WAREHOUSES
EAST ROOF REPLACEMENT PROJECT
ROOF PLAN**

SCALE: **N.T.S.** DRAWN BY: **M.D.T.** CHECKED BY: **M.D.T.** APPROVED BY: **M.D.T.**

PN 11389

**ALABAMA STATE
PORT AUTHORITY**
MOBILE, ALABAMA

DATE: **FEB/2024** DRAWING NO.: **ED-1-101** REVISION NO.:

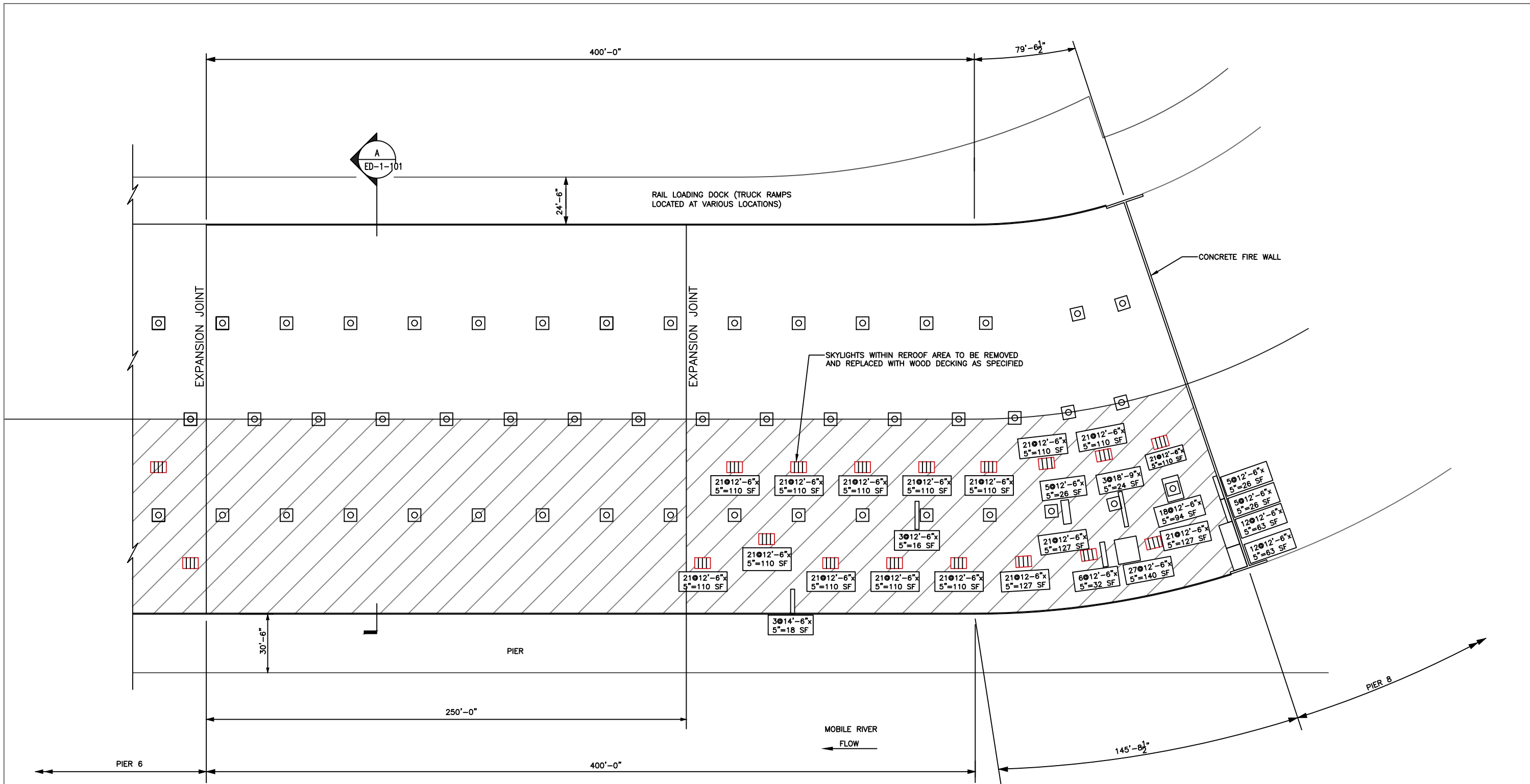


PARTIAL ROOF PLAN – PIER 6




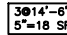
LEGEND

- ROOFING SYSTEM TO BE REPLACED (APPROX. 105,000 SF)
NOTE: ROOF SLOPE SHOWN ON VENTILATOR DETAIL DWG. ED-1-201
- TRANSLUCENT PANEL
SEE DETAIL A DWG. ED-1-201
- 42" ROOF VENT, xxx EACH
SEE DETAIL F DWG. ED-1-201
- APPROX. QUANTITY OF TIMBER
DECKING TO BE REPLACED

REVISION NO.	DESCRIPTION	DATE	BY:
PIERS 6 & 7 WAREHOUSES EAST ROOF REPLACEMENT PROJECT PARTIAL ROOF PLAN – PIER 6			
SCALE	DRAWN BY: M.D.T.	CHECKED BY: M.D.T.	APPROVED BY:
		ALABAMA STATE PORT AUTHORITY	
MOBILE, ALABAMA		PN 11389	
DATE	DRAWING NO.:	REVISION NO.:	
FEB/2024	ED-1-102		



LEGEND

-  ROOFING SYSTEM TO BE REPLACED (APPROX. 105,000 SF)
NOTE: ROOF SLOPE SHOWN ON VENTILATOR DETAIL DWG. ED-201
-  TRANSLUCENT PANEL
SEE DETAIL A DWG. ED-1-201
-  42" ROOF VENT, xxx EACH
SEE DETAIL F DWG ED-1-201
-  APPROX. QUANTITY OF TIMBER
DECKING TO BE REPLACED

PARTIAL ROOF PLAN - PIER 7

REVISION NO.	DESCRIPTION	DATE	BY:

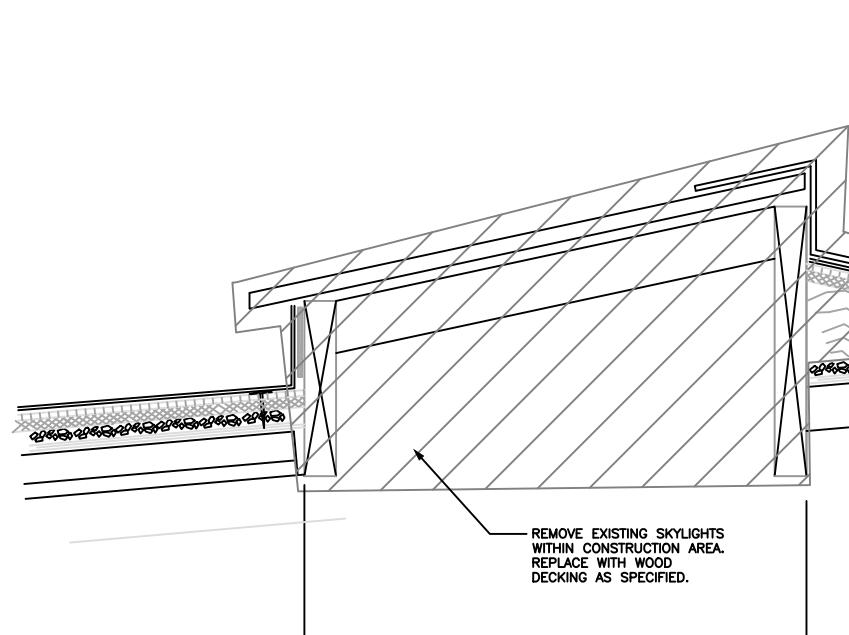
**PIERS 6 & 7 WAREHOUSES
EAST ROOF REPLACEMENT PROJECT
PARTIAL ROOF PLAN - PIER 7**

SCALE:	DRAWN BY:	CHECKED BY:	APPROVED BY:
SCALE	M.D.T.	M.D.T.	

PN 11389

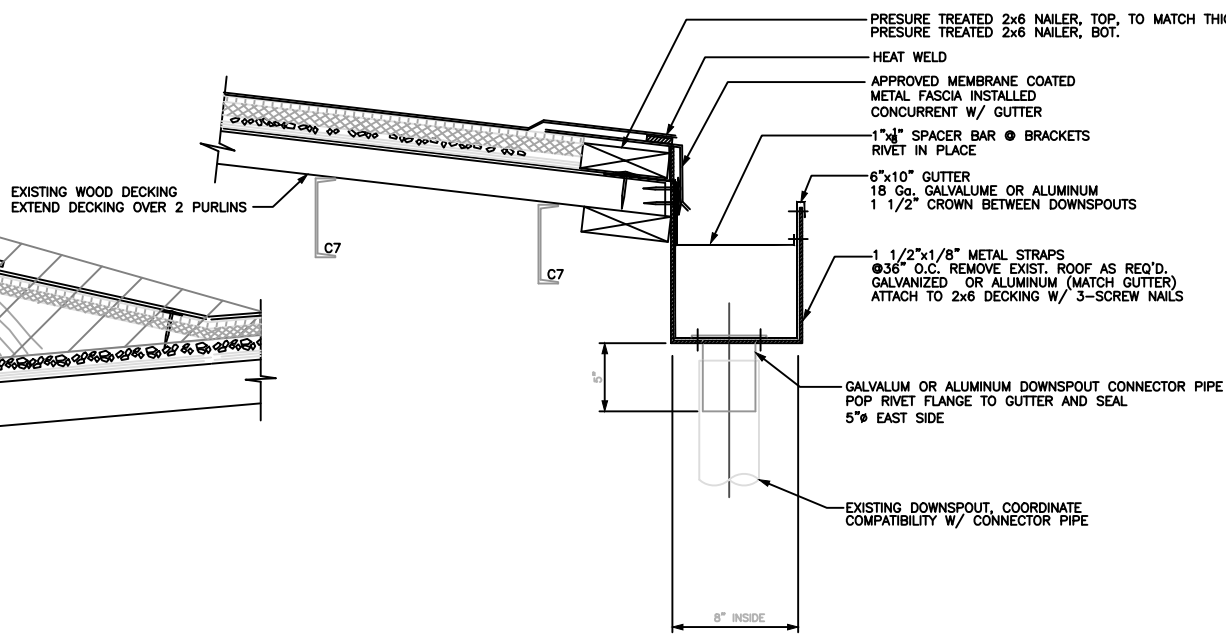
**ALABAMA STATE
PORT AUTHORITY**
MOBILE, ALABAMA

DATE	DRAWING NO. :	REVISION NO. :
FRB/2024	ED-1-103	

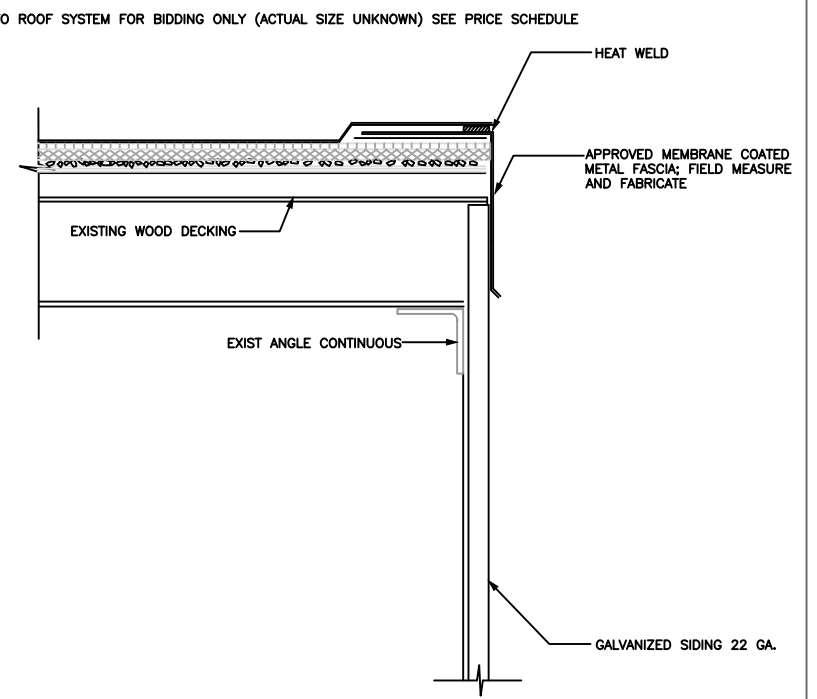


NOTE:
WOOD DECKING SHALL SPAN 3 PURLINS MINIMUM PER SPECIFICATIONS. ADDITIONAL DECKING TO MEET THIS REQUIREMENT SHALL ALWAYS BE PLACED TO DOWNSTREAM SIDE UNLESS DIRECTED OTHERWISE BY ENGINEER.

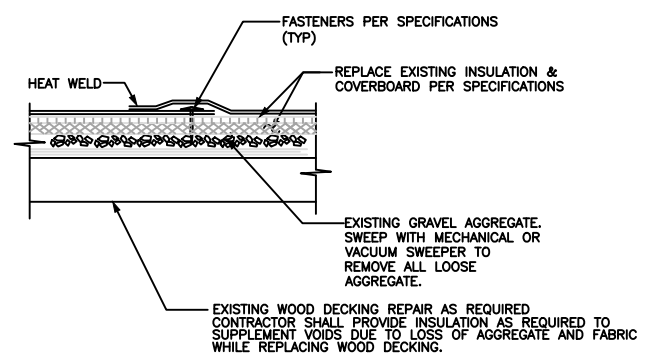
SKYLIGHT REMOVAL DETAIL
N.T.S.



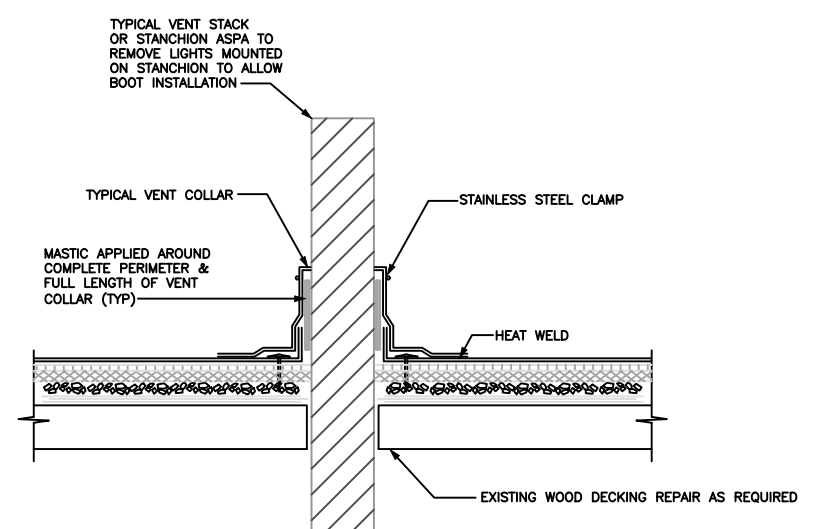
GUTTER DETAIL
N.T.S.



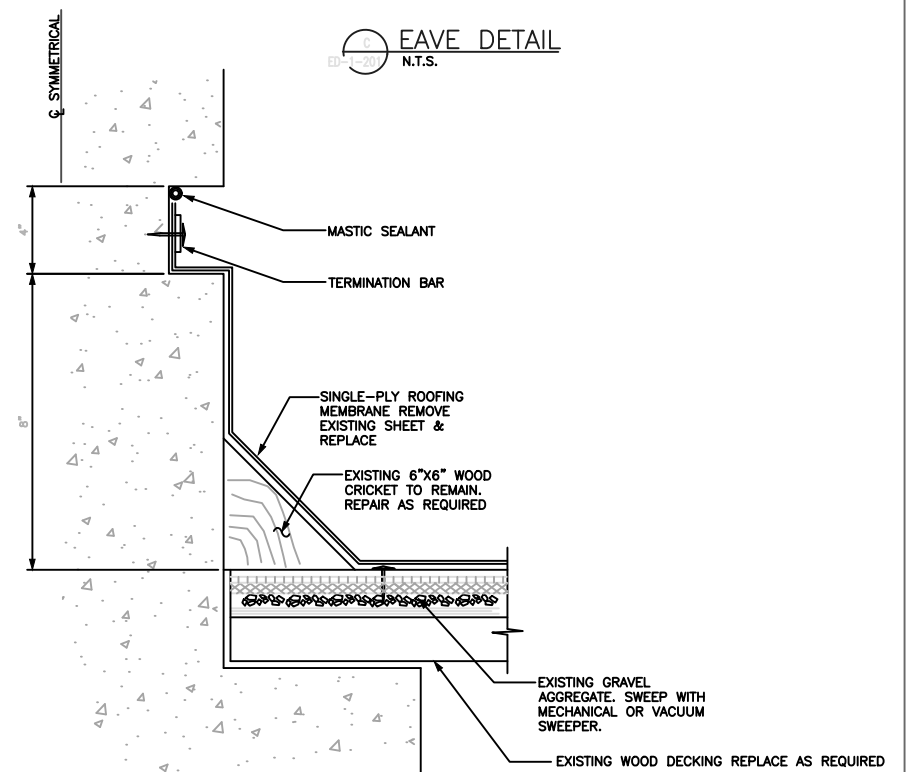
EAVE DETAIL
N.T.S.



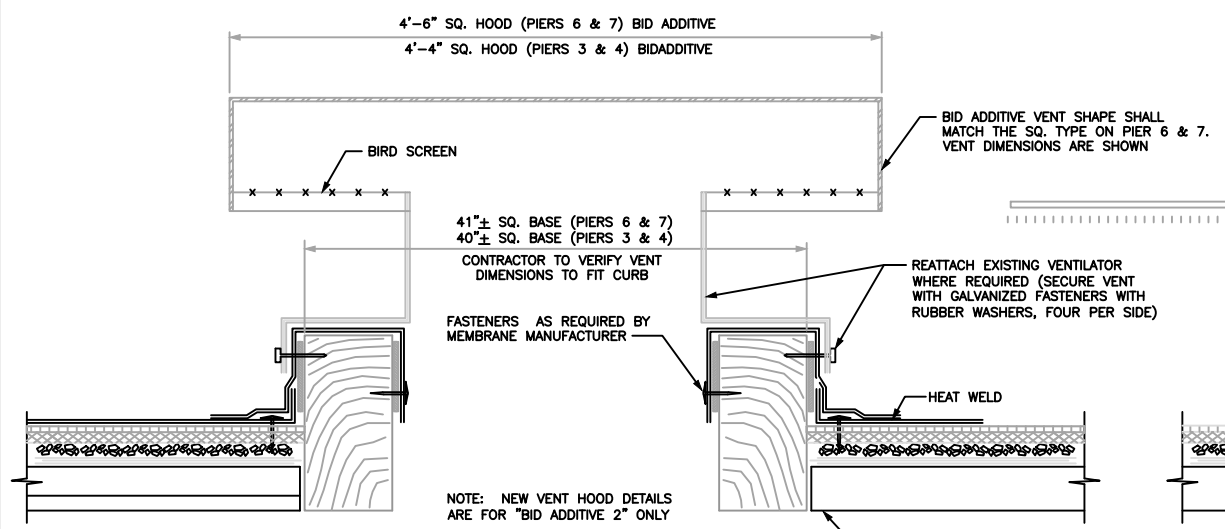
TYPICAL REROOF DETAIL
N.T.S.



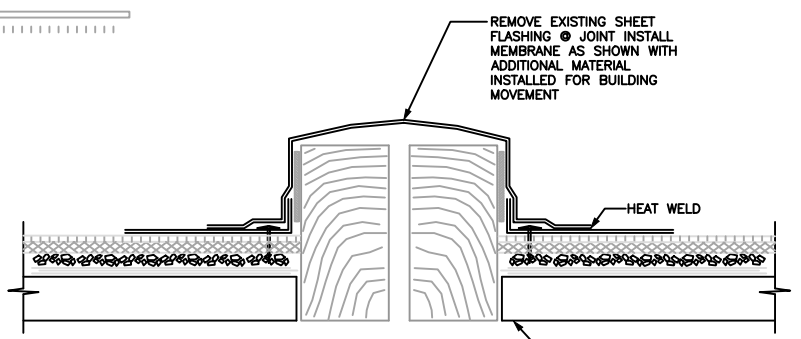
TYPICAL STACK DETAIL
N.T.S.



DETAIL AT FIREWALL
N.T.S.



VENT CURB DETAIL
N.T.S.



EXPANSION JOINT DETAIL
N.T.S.

REVISION NO.	DESCRIPTION	DATE	BY:

PIERS 6 & 7 WAREHOUSES
EAST ROOF REPLACEMENT PROJECT
DETAILS

SCALE: N.T.S. DRAWN BY: M.D.T. CHECKED BY: M.D.T. APPROVED BY: PN 11389



ALABAMA STATE
PORT AUTHORITY
MOBILE, ALABAMA

DATE: FEB/2024 DRAWING NO.: ED-1-201 REVISION NO.: 1