

TOE OF CHANNEL

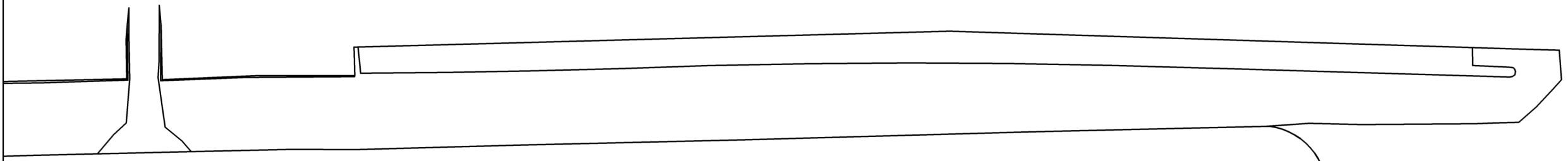
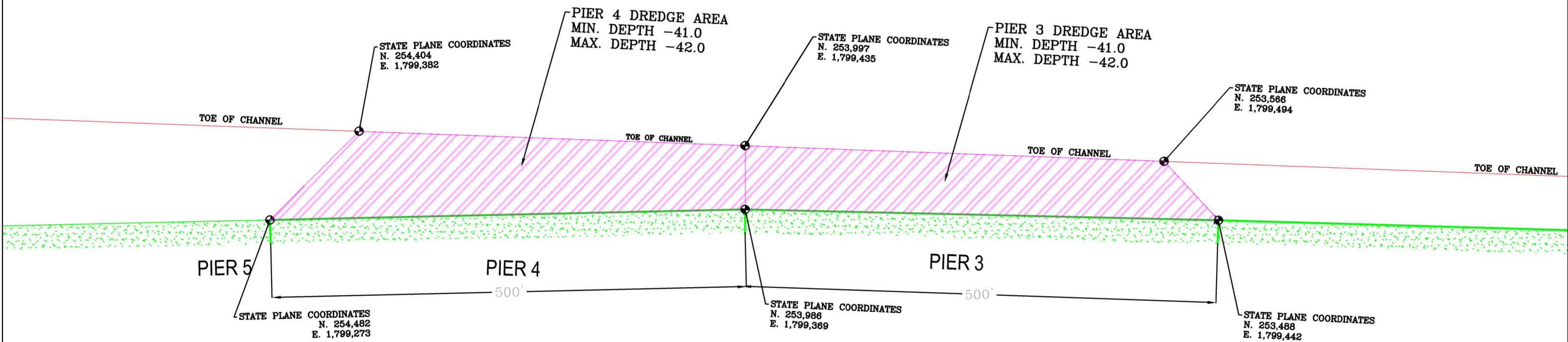
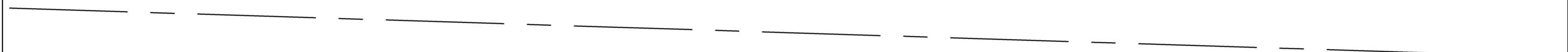
TOE OF CHANNEL

TOE OF CHANNEL

TOE OF CHANNEL

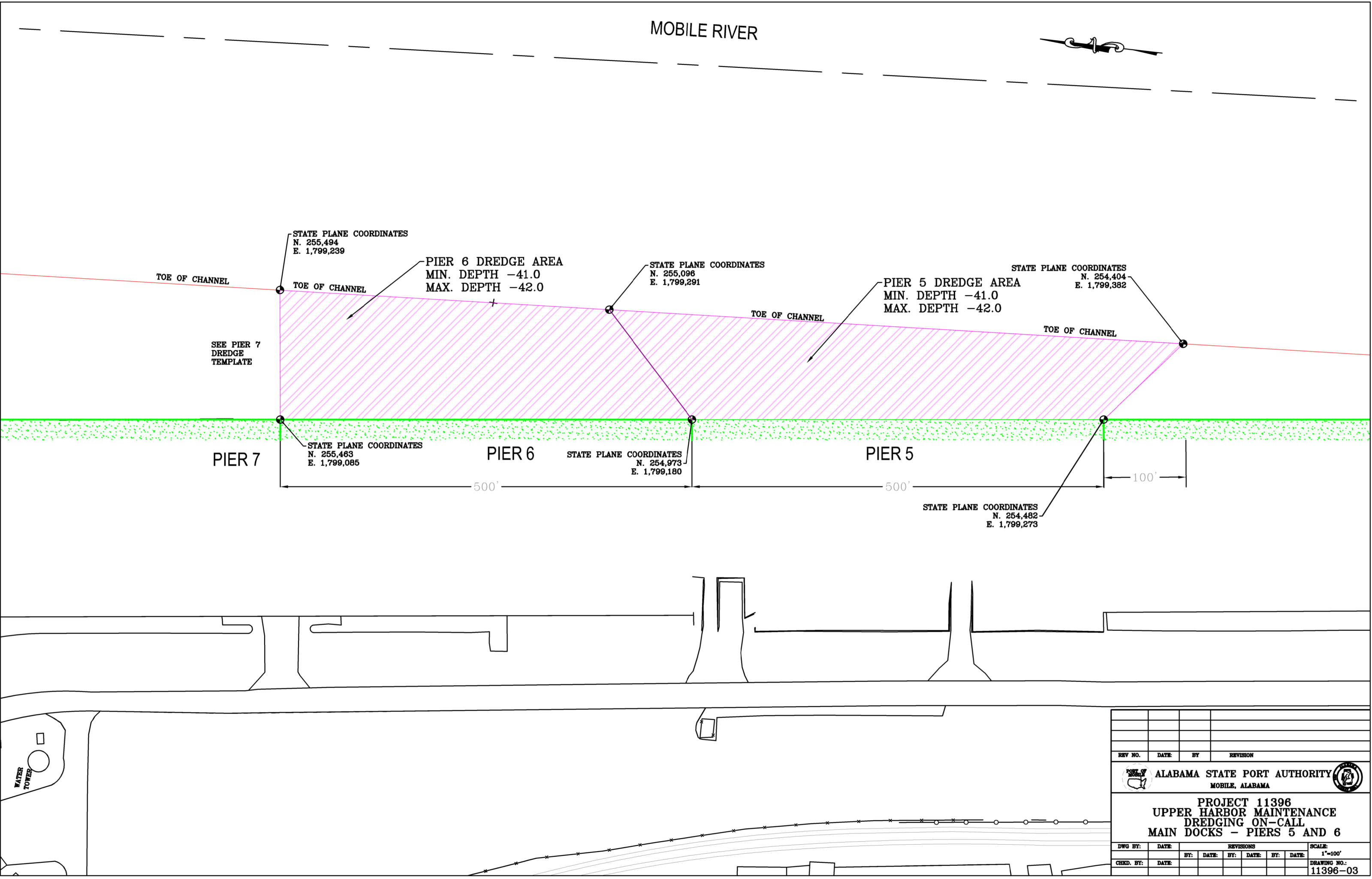
TOE OF CHANNEL

TOE OF CHANNEL



REV NO.	DATE:	BY	REVISION				
		ALABAMA STATE PORT AUTHORITY MOBILE, ALABAMA					
PROJECT 11396 UPPER HARBOR MAINTENANCE DREDGING ON-CALL MAIN DOCKS - PIERS 3 AND 4							
DWG BY:	DATE:	REVISIONS				SCALE:	
		BY:	DATE:	BY:	DATE:	BY:	DATE:
CHKD. BY:	DATE:	DRAWING NO.:					11396 - 02

MOBILE RIVER



TOE OF CHANNEL

STATE PLANE COORDINATES
N. 255,494
E. 1,799,239

TOE OF CHANNEL

PIER 6 DREDGE AREA
MIN. DEPTH -41.0
MAX. DEPTH -42.0

STATE PLANE COORDINATES
N. 255,096
E. 1,799,291

TOE OF CHANNEL

PIER 5 DREDGE AREA
MIN. DEPTH -41.0
MAX. DEPTH -42.0

STATE PLANE COORDINATES
N. 254,404
E. 1,799,382

TOE OF CHANNEL

SEE PIER 7
DREDGE
TEMPLATE

PIER 7

STATE PLANE COORDINATES
N. 255,463
E. 1,799,085

PIER 6

STATE PLANE COORDINATES
N. 254,973
E. 1,799,180

PIER 5

STATE PLANE COORDINATES
N. 254,482
E. 1,799,273

100'

WATER
TOWER

REV NO.	DATE	BY	REVISION

ALABAMA STATE PORT AUTHORITY
MOBILE, ALABAMA

PROJECT 11396
UPPER HARBOR MAINTENANCE
DREDGING ON-CALL
MAIN DOCKS - PIERS 5 AND 6

DWG BY:	DATE:	BY:	DATE:	BY:	DATE:	BY:	DATE:	SCALE:
								1"=100'

CHKD. BY: DATE: DRAWING NO.: 11396-03

MOBILE RIVER



PIER A RIVER END DREDGE AREA
MIN. DEPTH -41.0
MAX. DEPTH -42.0

PIER 7 DREDGE AREA
MIN. DEPTH -41.0
MAX. DEPTH -42.0

TOE OF CHANNEL

SEE SLIP B
DREDGE
TEMPLATE

STATE PLANE COORDINATES
N. 256,646
E. 1,799,087

STATE PLANE COORDINATES
N. 256,190
E. 1,799,147

STATE PLANE COORDINATES
N. 255,494
E. 1,799,239

STATE PLANE COORDINATES
N. 256,889
E. 1,799,035

TOE OF CHANNEL

TOE OF CHANNEL

TOE OF CHANNEL

TOE OF CHANNEL

STATE PLANE COORDINATES
N. 256,827
E. 1,798,941

STATE PLANE COORDINATES
N. 256,230
E. 1,799,028

SEE PIER 6
DREDGE
TEMPLATE

PIER A RIVER END

STATE PLANE COORDINATES
N. 256,125
E. 1,798,955

STATE PLANE COORDINATES
N. 255,463
E. 1,799,085

PIER A SOUTH DREDGE AREA
MIN. DEPTH -31.0
MAX. DEPTH -32.0

PIER 6

678'

STATE PLANE COORDINATES
N. 256,883
E. 1,798,891

PIER A SOUTH

PIER 7

PIER 8

STATE PLANE COORDINATES
N. 256,417
E. 1,798,487

545'

PIER 8 DREDGE AREA
MIN. DEPTH -31.0
MAX. DEPTH -32.0

STATE PLANE COORDINATES
N. 256,542
E. 1,798,467

DO NOT DREDGE

STATE PLANE COORDINATES
N. 256,305
E. 1,798,444

WATER
TOWER

REV NO.	DATE	BY	REVISION

ALABAMA STATE PORT AUTHORITY
MOBILE, ALABAMA

PROJECT 11396
UPPER HARBOR MAINTENANCE
DREDGING ON-CALL
MAIN DOCKS - PIERS 7 AND 8

DWG BY:	DATE:	BY:	DATE:	BY:	DATE:	BY:	DATE:	SCALE:
								1"=100'

DRAWING NO.: 11396-04

SEE SLIP C
DREDGE
TEMPLATE

STATE PLANE COORDINATES
N. 258,101
E. 1,798,773

STATE PLANE COORDINATES
N. 258,049
E. 1,798,864

PIER B RIVER END DREDGE AREA
MIN. DEPTH -41.0
MAX. DEPTH -42.0

MOBILE RIVER

PIER B SOUTH DREDGE AREA
MIN. DEPTH -41.0
MAX. DEPTH -42.0

PIER B SOUTH

STATE PLANE COORDINATES
N. 258,111
E. 1,797,624

STATE PLANE COORDINATES
N. 257,417
E. 1,798,841

STATE PLANE COORDINATES
N. 257,328
E. 1,798,998

STATE PLANE COORDINATES
N. 257,919
E. 1,797,659

STATE PLANE COORDINATES
N. 257,136
E. 1,799,023


STATE PLANE COORDINATES
N. 257,685
E. 1,797,704

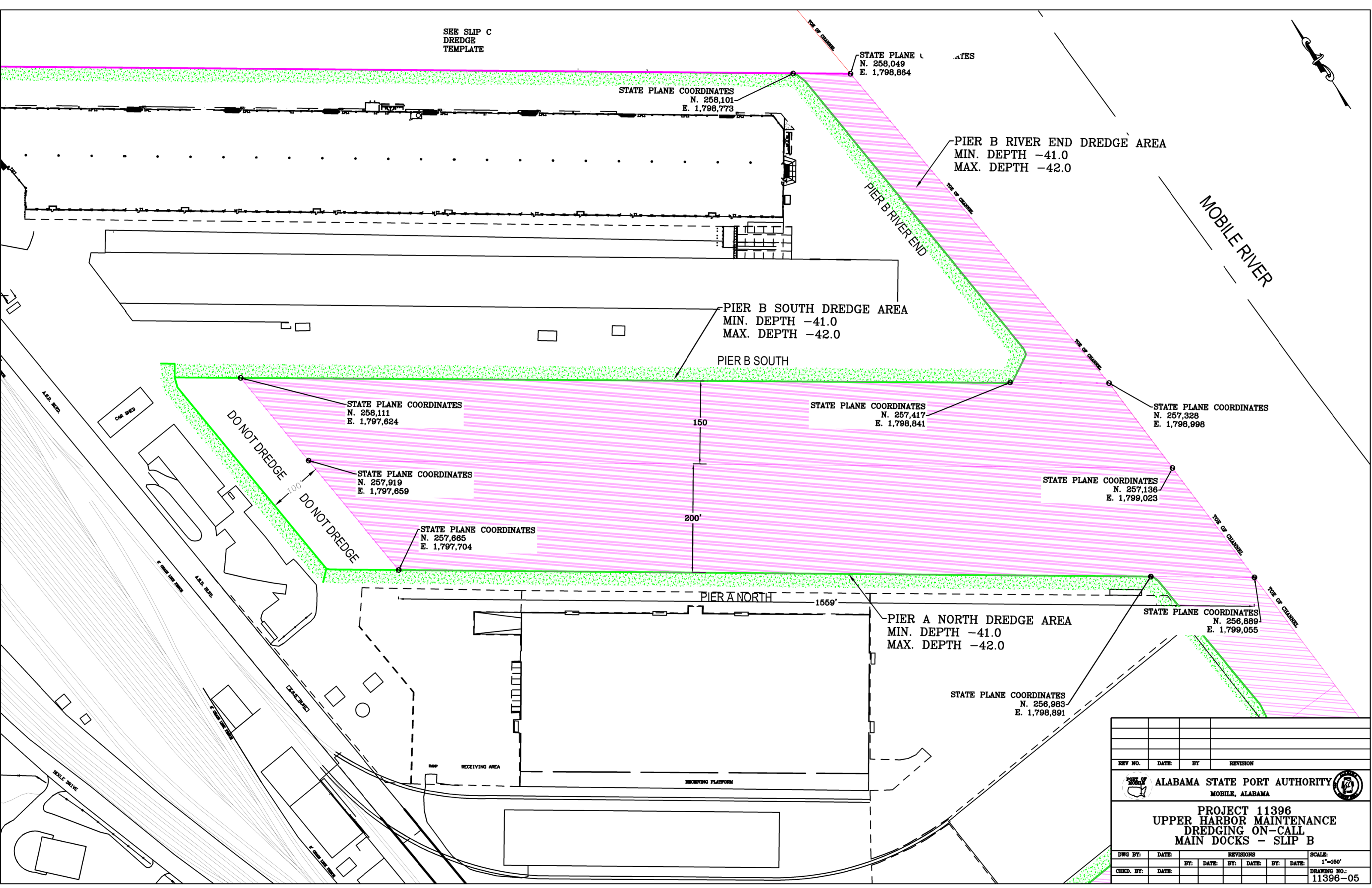
STATE PLANE COORDINATES
N. 256,889
E. 1,799,055

PIER A NORTH DREDGE AREA
MIN. DEPTH -41.0
MAX. DEPTH -42.0

PIER A NORTH

STATE PLANE COORDINATES
N. 256,983
E. 1,798,891

REV NO.	DATE	BY	REVISION
 ALABAMA STATE PORT AUTHORITY MOBILE, ALABAMA			
PROJECT 11396 UPPER HARBOR MAINTENANCE DREDGING ON-CALL MAIN DOCKS - SLIP B			
DWG BY:	DATE:	REVISIONS	SCALE:
			1"=150'
CHKD. BY:	DATE:		DRAWING NO.:
			11396-05



MOBILE RIVER

GRAIN ELEVATOR DOCK

PIG IRON FACILITY

HEAD OF SLIP D

DO NOT DREDGE

DO NOT DREDGE

PIER C NORTH

PIER C NORTH

PIER C RIVER END

CAUTION TO BE USED AROUND EXISTING STRUCTURE. STRUCTURE NOT TO BE USED BY CONTRACTOR TO INCLUDE WINCH LINES.

SEE GRAIN ELEVATOR DREDGE TEMPLATE

STATE PLANE COORDINATES
N. 260,280
E. 1,797,380

STATE PLANE COORDINATES
N. 260,134
E. 1,797,311

STATE PLANE COORDINATES
N. 259,848
E. 1,798,329

STATE PLANE COORDINATES
N. 259,761
E. 1,798,279

STATE PLANE COORDINATES
N. 259,703
E. 1,798,581

STATE PLANE COORDINATES
N. 259,675
E. 1,798,563

PIER C NORTH DREDGE AREA
MIN. DEPTH -41.0
MAX. DEPTH -42.0

STATE PLANE COORDINATES
N. 259,386
E. 1,798,616

STATE PLANE COORDINATES
N. 259,426
E. 1,798,545

REV NO.	DATE	BY	REVISION

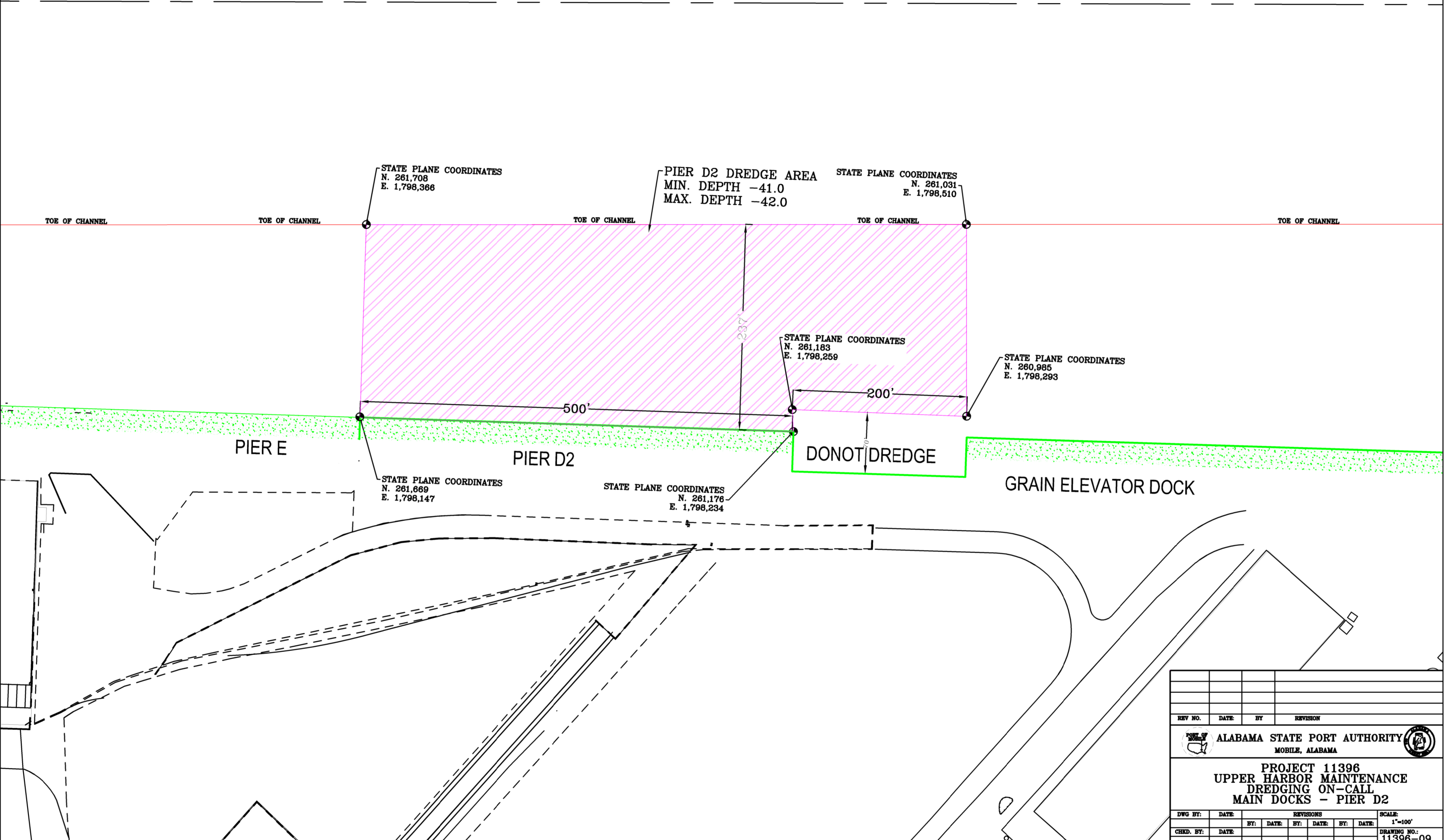
ALABAMA STATE PORT AUTHORITY
MOBILE, ALABAMA

PROJECT 11396
UPPER HARBOR MAINTENANCE
DREDGING ON-CALL
MAIN DOCKS - SLIP D

DWG BY:	DATE:	REVISIONS	SCALE:
		BY: DATE: BY: DATE: BY: DATE:	1"=150'
CHKD. BY:	DATE:		DRAWING NO.:
			11396-07



MOBILE RIVER



STATE PLANE COORDINATES
N. 261,708
E. 1,798,366

PIER D2 DREDGE AREA
MIN. DEPTH -41.0
MAX. DEPTH -42.0


STATE PLANE COORDINATES
N. 261,031
E. 1,798,510

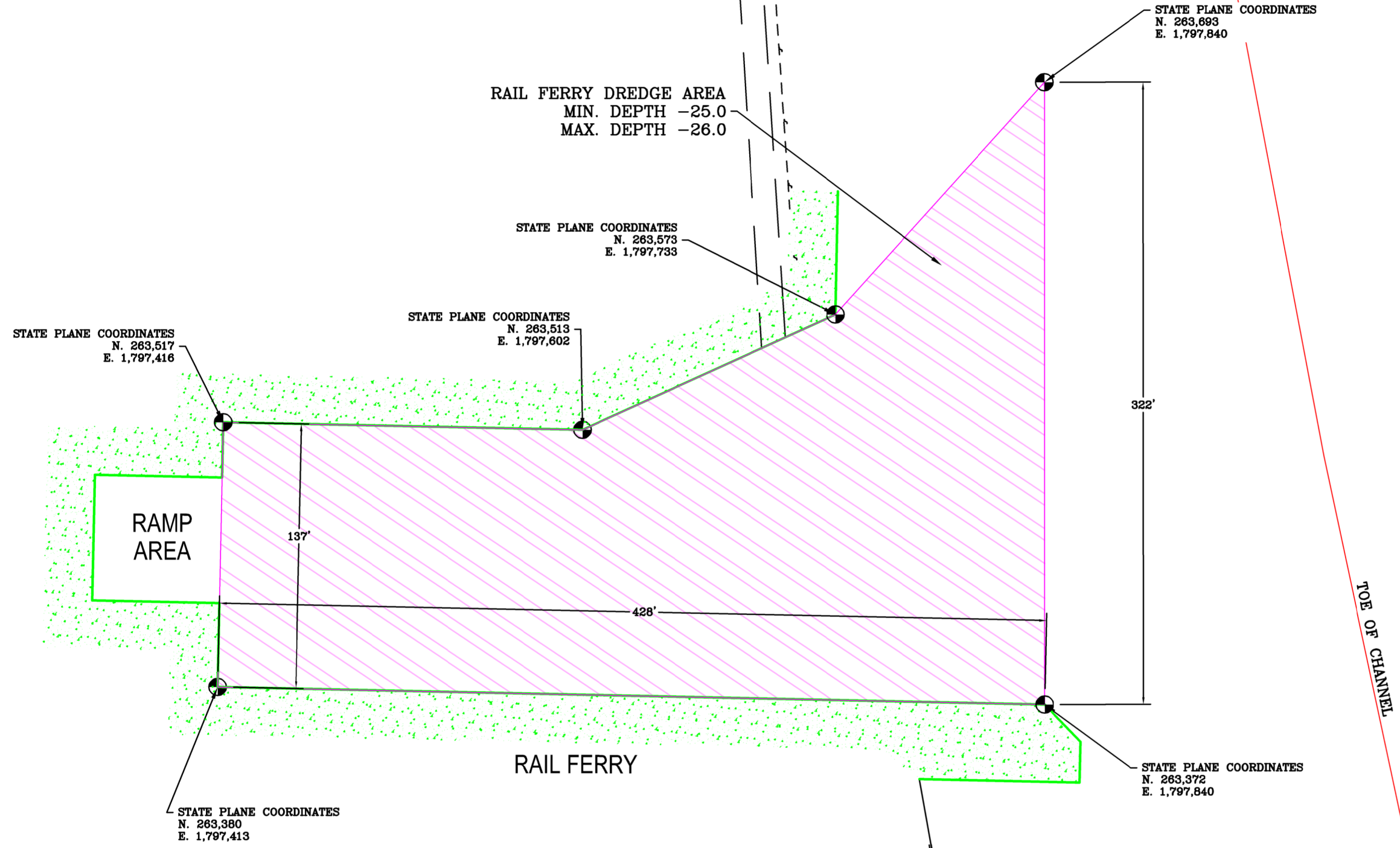
STATE PLANE COORDINATES
N. 261,183
E. 1,798,259


STATE PLANE COORDINATES
N. 260,985
E. 1,798,293

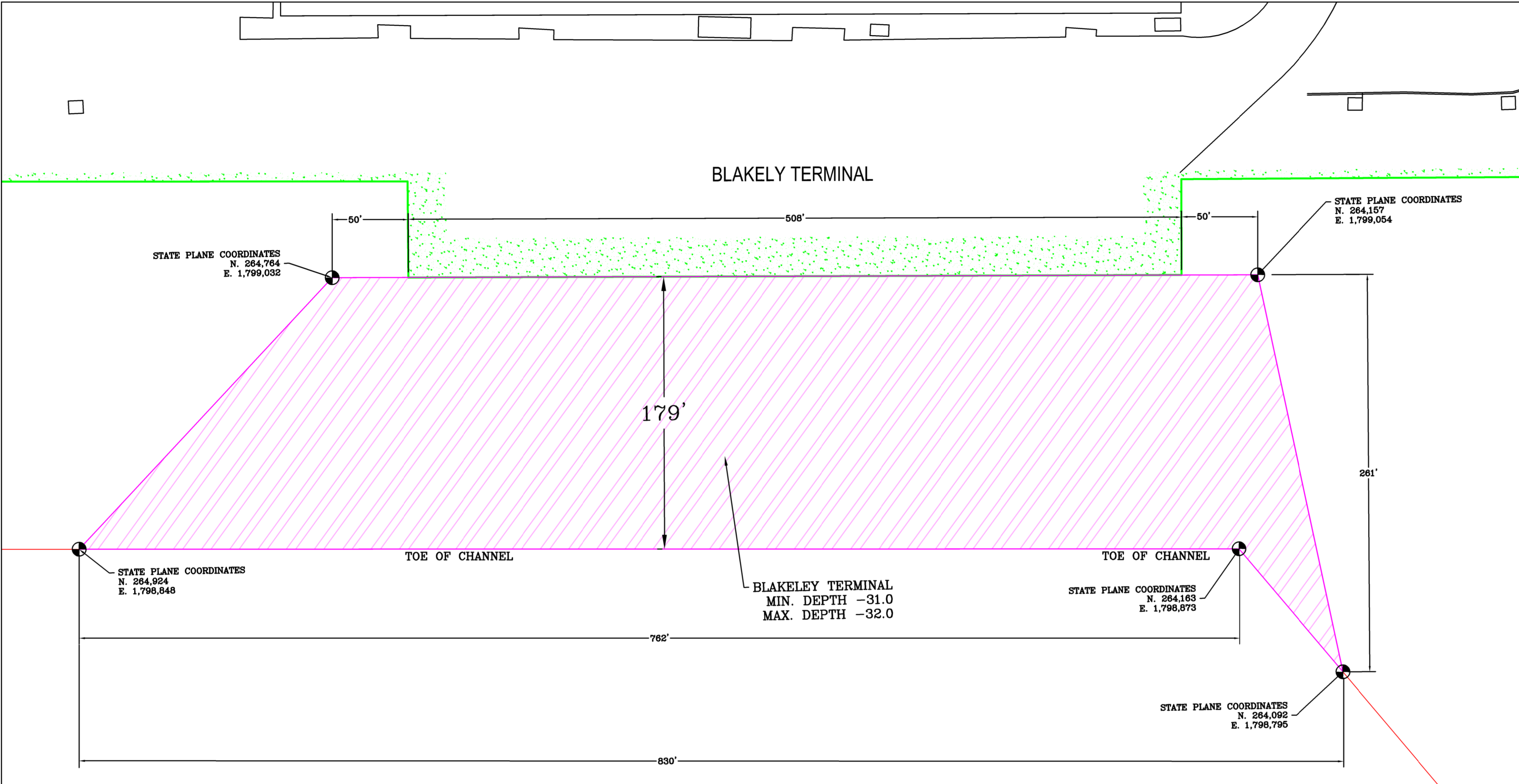
STATE PLANE COORDINATES
N. 261,689
E. 1,798,147

STATE PLANE COORDINATES
N. 261,176
E. 1,798,234

REV NO.	DATE	BY	REVISION
 ALABAMA STATE PORT AUTHORITY MOBILE, ALABAMA			
PROJECT 11396 UPPER HARBOR MAINTENANCE DREDGING ON-CALL MAIN DOCKS - PIER D2			
DWG BY:	DATE:	REVISIONS	SCALE:
		BY: DATE: BY: DATE: BY: DATE:	1"=100'
CHKD. BY:	DATE:		DRAWING NO.:
			11396-09



REV NO.	DATE	BY	REVISION
 ALABAMA STATE PORT AUTHORITY MOBILE, ALABAMA			
PROJECT 11396 UPPER HARBOR MAINTENANCE DREDGING ON-CALL MAIN DOCKS - RAIL FERRY			
DWG BY:	DATE:	REVISIONS	SCALE:
			1"=50'
CHKD. BY:	DATE:	BY:	DATE:
DRAWING NO.:			11396-11



1	6/24/2023	JJB	ADDED DRAWING VIA ADDENDUM NO. 4.				
REV NO.	DATE	BY	REVISION				
ALABAMA STATE PORT AUTHORITY							
MOBILE, ALABAMA							
PROJECT 11396							
UPPER HARBOR MAINTENANCE							
DREDGING ON-CALL							
MAIN DOCKS - BLAKELEY TERMINAL							
DWG BY:	DATE:	REVISIONS				SCALE:	
		BY:	DATE:	BY:	DATE:	BY:	DATE:
CHKD. BY:	DATE:						
							DRAWING NO.: 11396-13

DISCHARGE LOCATION

ALL ROADS MUST BE KEPT PASSABLE AT ALL TIMES. ROADS MUST BE RETURNED TO PRE-CONSTRUCTION CONDITION UPON COMPLETION OF WORK.

UTILIZE EXISTING 30" DIAMETER X 400 LF HDPE UNDER HIGHWAY. CONTRACTOR TO PROVIDE REQUIRED CONNECTIONS AND RETURN TO CURRENT CONDITION UPON PROJECT COMPLETION.

APPROXIMATE DREDGE PIPE LOCATION.

PIPE TO DREDGING LOCATIONS BEYOND THIS POINT TO BE DETERMINED AND COORDINATED WITH STAKEHOLDERS BY CONTRACTOR.

SUNKEN DISCHARGE LINE IN THIS LOCATION.

SUNKEN DISCHARGE LINE IN THIS LOCATION.

SUNKEN DISCHARGE LINE IN THIS LOCATION.

REV NO.	DATE	BY	REVISION

ALABAMA STATE PORT AUTHORITY
MOBILE, ALABAMA

**PROJECT 11396
UPPER HARBOR MAINTENANCE
DREDGING ON-CALL
DISCHARGE PIPE PATH**

DWG BY:	DATE:	REVISIONS	SCALE:
		BY: DATE: BY: DATE: BY: DATE:	1:300
CHKD. BY:	DATE:		DRAWING NO.:
			11396-14