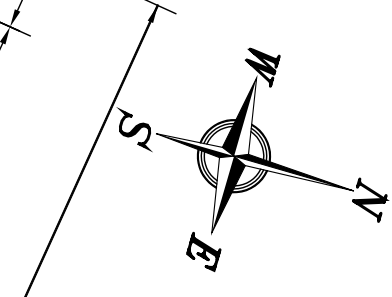


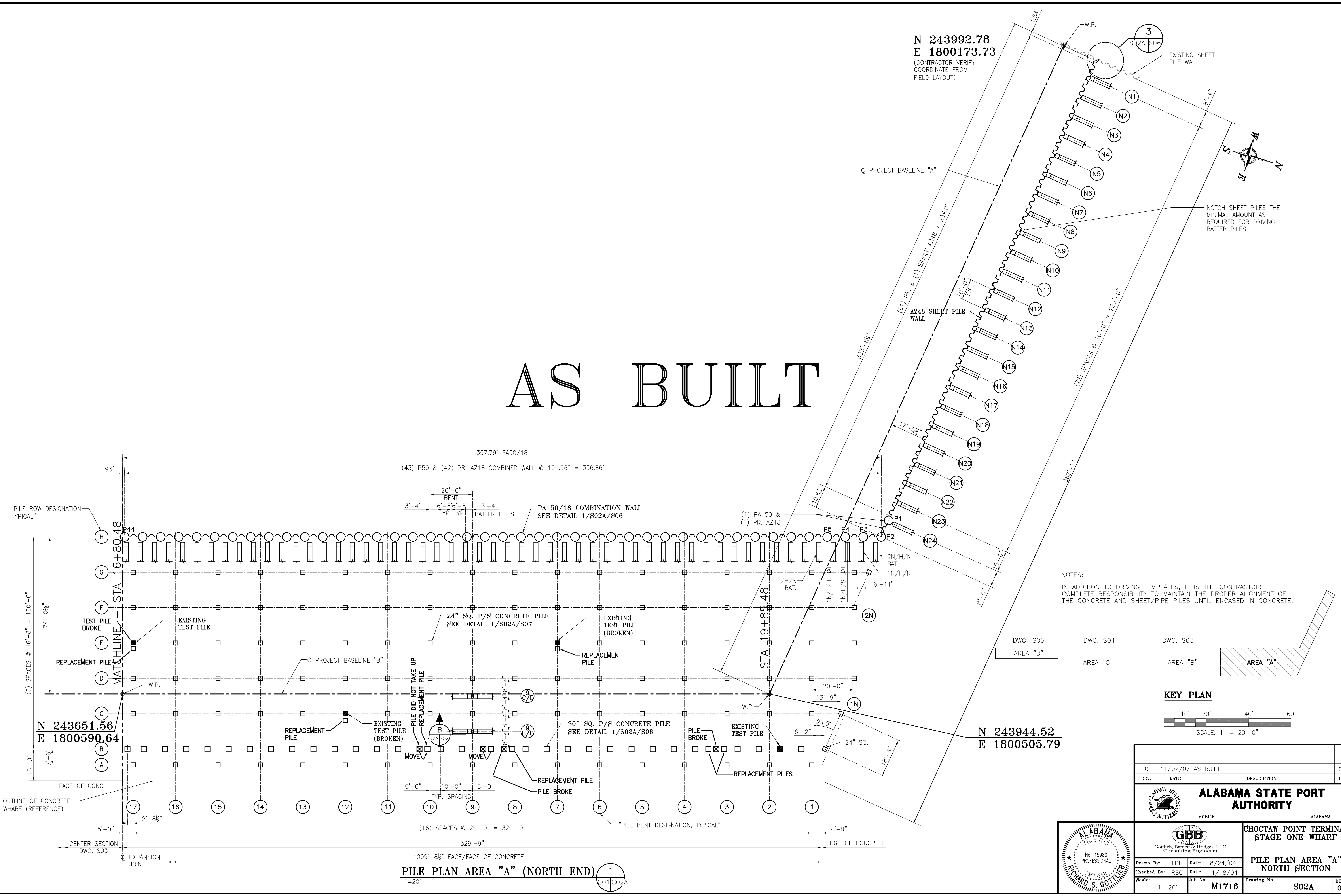
H:\Project\1486\1716\1716-05-BUILD\Stage 1\Wharf\1716-S02A.dwg, 11/15/2007 11:01:31 AM, David H. Ingalls

AS BUILT

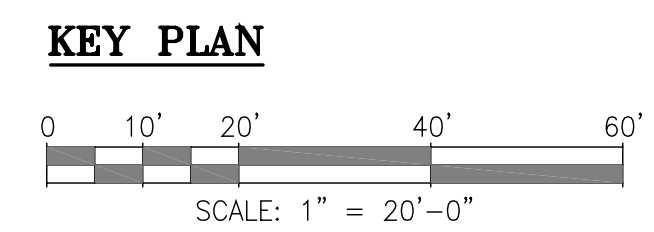
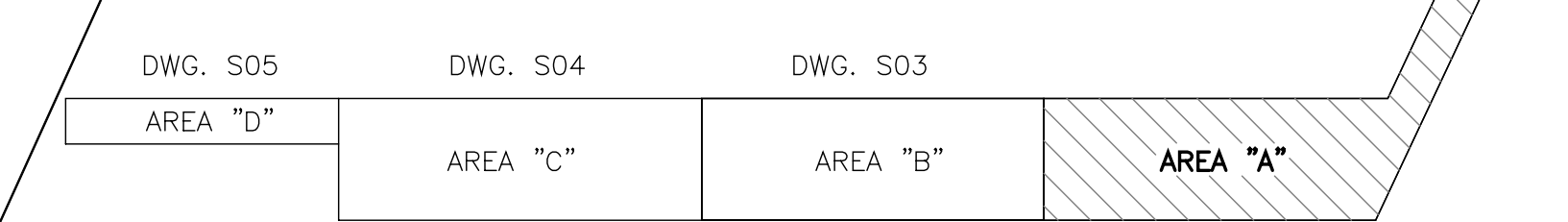
N 243992.78
E 1800173.73
 (CONTRACTOR VERIFY
 COORDINATE FROM
 FIELD LAYOUT)



NOTCH SHEET PILES THE
 MINIMAL AMOUNT AS
 REQUIRED FOR DRIVING
 BATTER PILES.

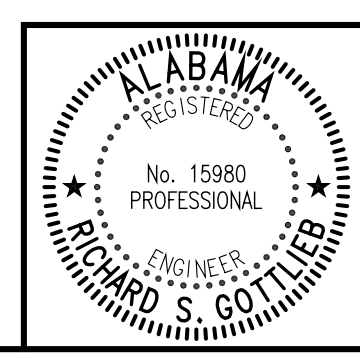


NOTES:
 IN ADDITION TO DRIVING TEMPLATES, IT IS THE CONTRACTORS
 COMPLETE RESPONSIBILITY TO MAINTAIN THE PROPER ALIGNMENT OF
 THE CONCRETE AND SHEET/PIPE PILES UNTIL ENCASED IN CONCRETE.



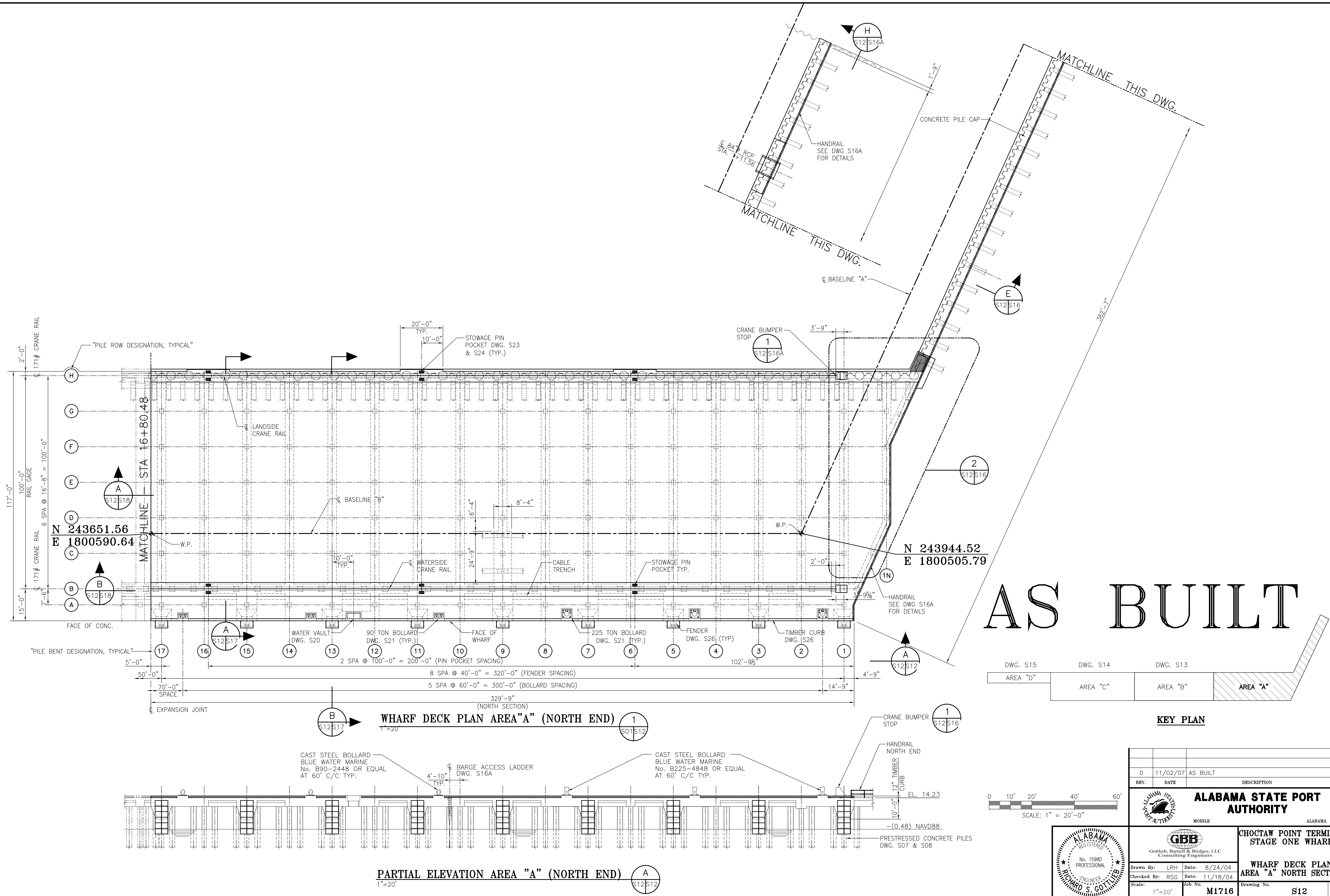
REV.	DATE	DESCRIPTION	BY
0	11/02/07	AS BUILT	RSG

ALABAMA STATE PORT AUTHORITY	
MOBILE	ALABAMA
 GBB Gottlieb, Barnet & Bridges, LLC Consulting Engineers	
Drawn By: LRH Checked By: RSG Scale: 1"=20'	Date: 8/24/04 Date: 11/18/04 Job No.: M1716
CHOCTAW POINT TERMINAL STAGE ONE WHARF PILE PLAN AREA "A" NORTH SECTION	
Drawing No. S02A	REV. 0

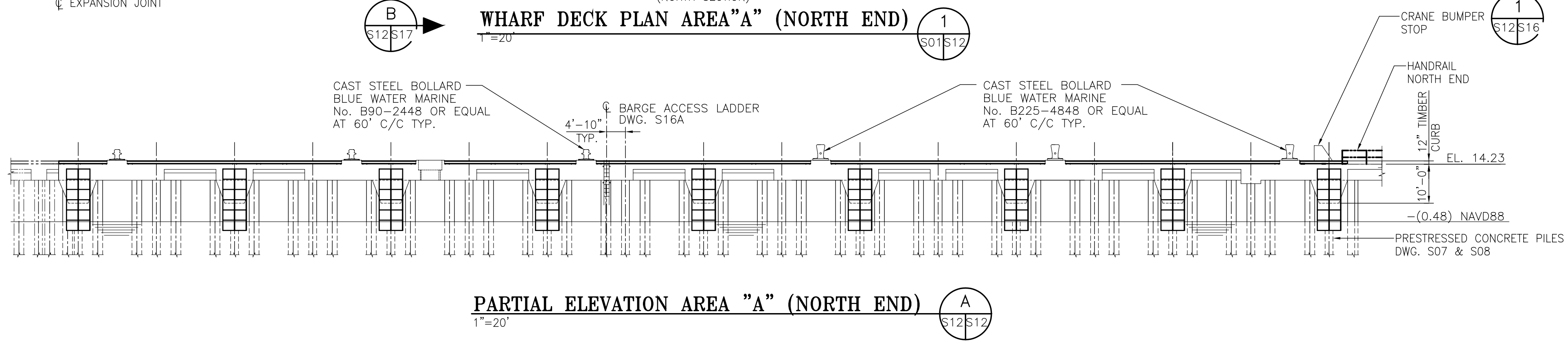
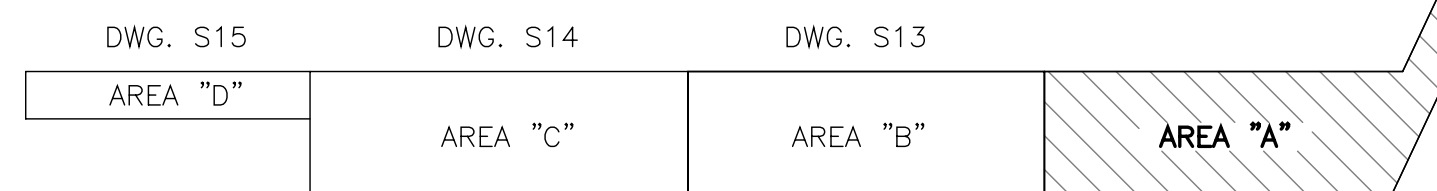


PILE PLAN AREA "A" (NORTH END)
 1"=20'

I:\Project_Files\M1716\M1716-512.dwg, 11/5/2007 11:02:21 AM, Gary D. Ingram



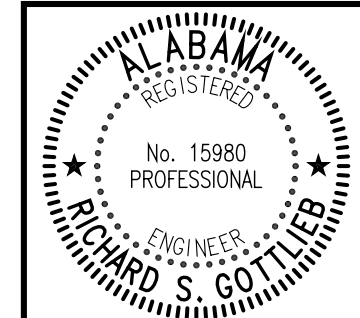
AS BUILT



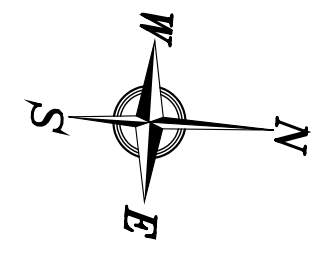
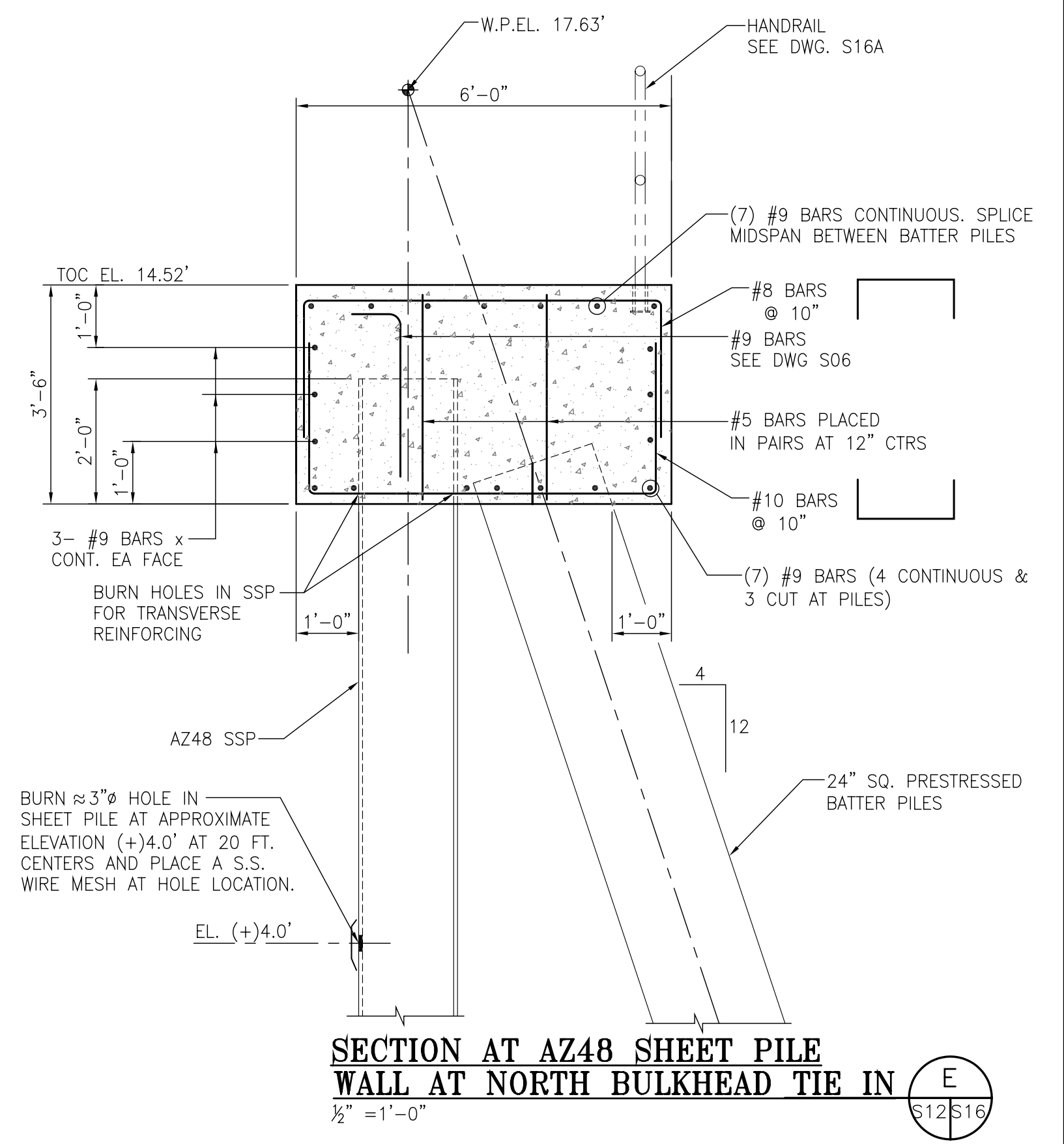
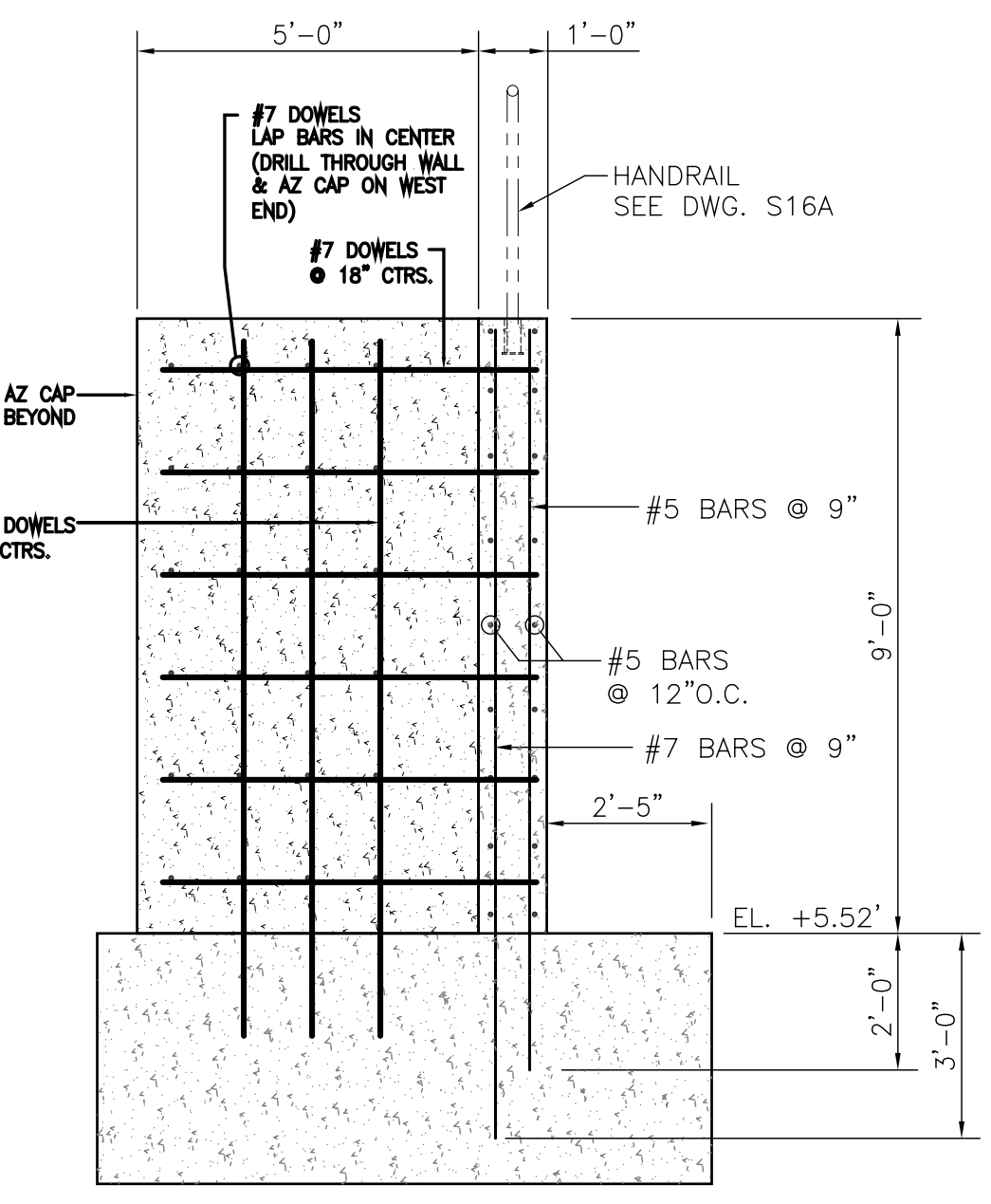
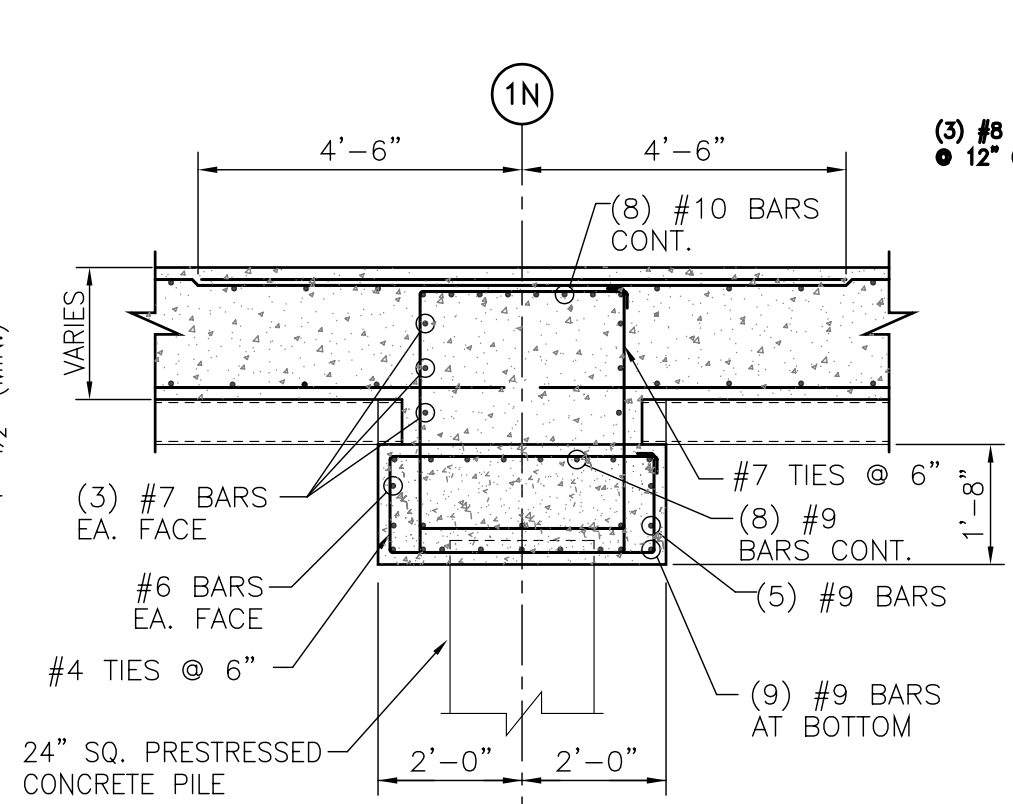
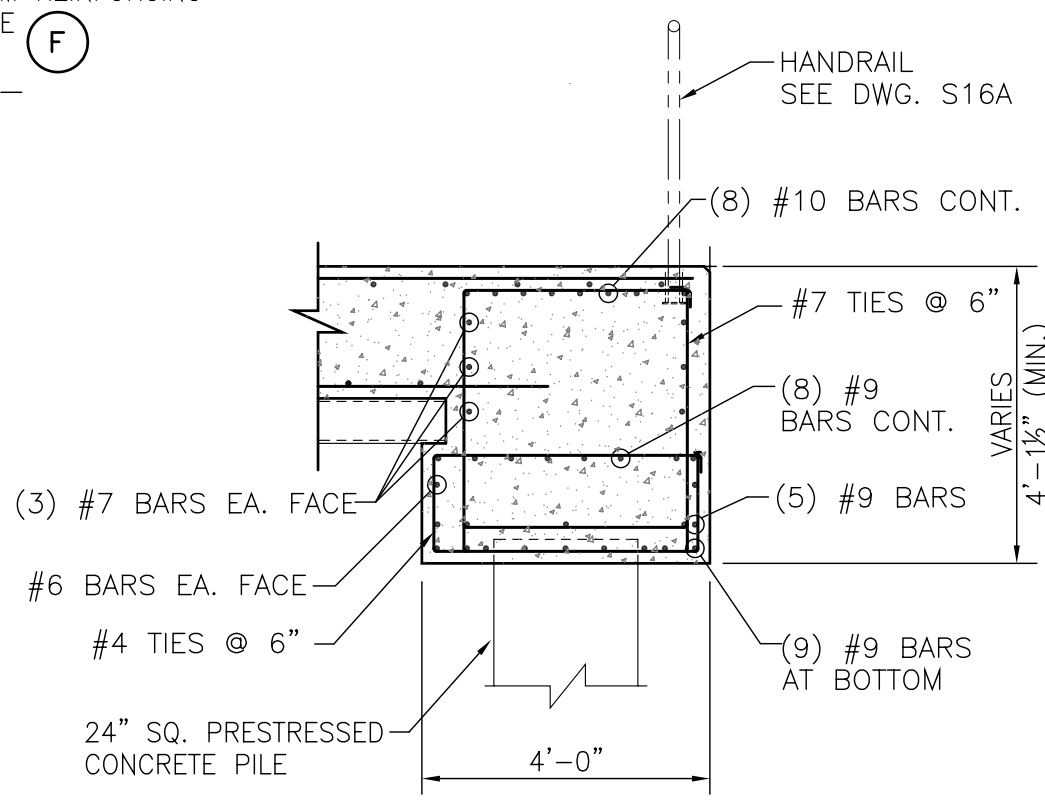
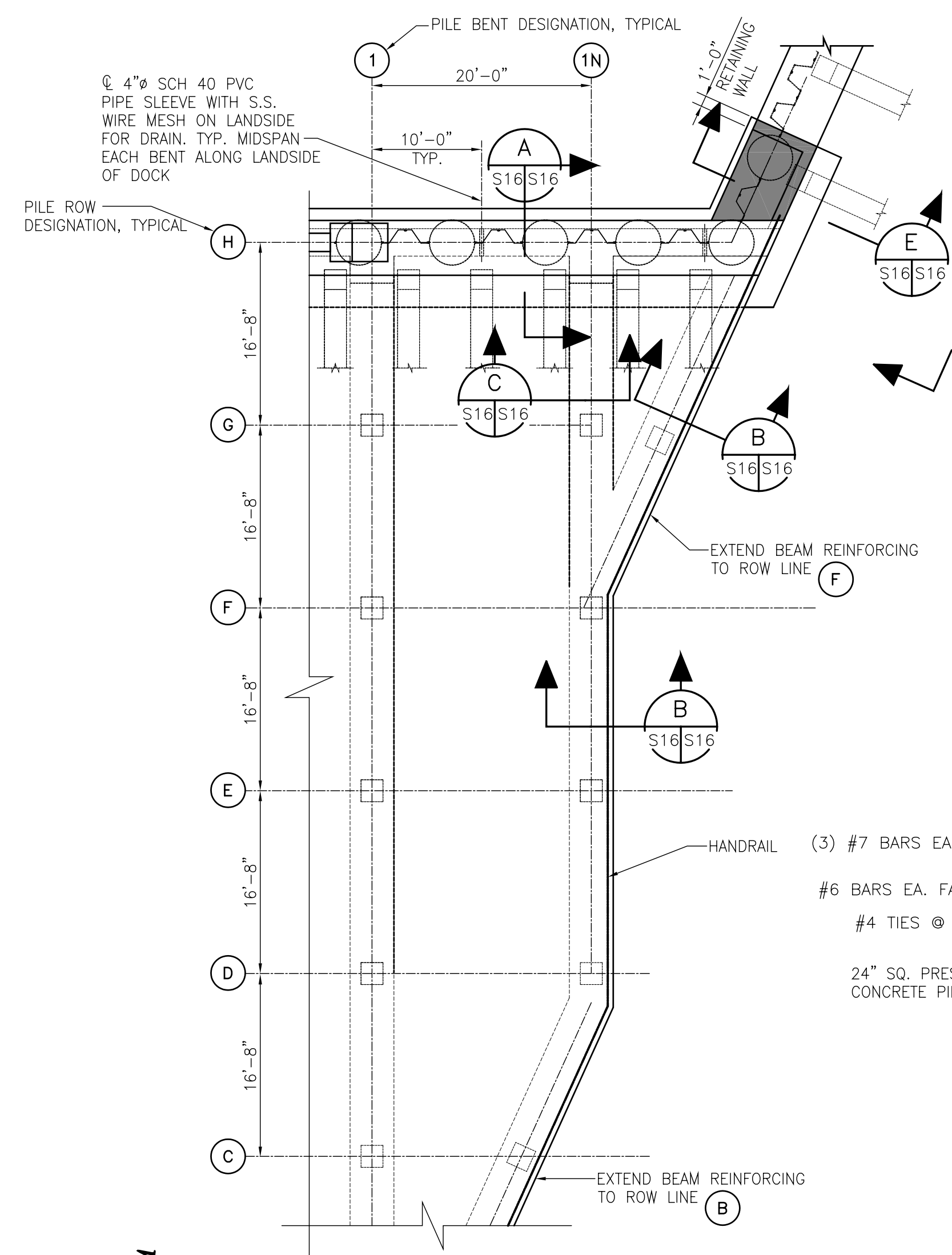
REV.	DATE	DESCRIPTION	BY
0	11/02/07	AS BUILT	RSG

ALABAMA STATE PORT AUTHORITY	
MOBILE	ALABAMA
CHOCTAW POINT TERMINAL STAGE ONE WHARF	
WHARF DECK PLAN AREA "A" NORTH SECTION	

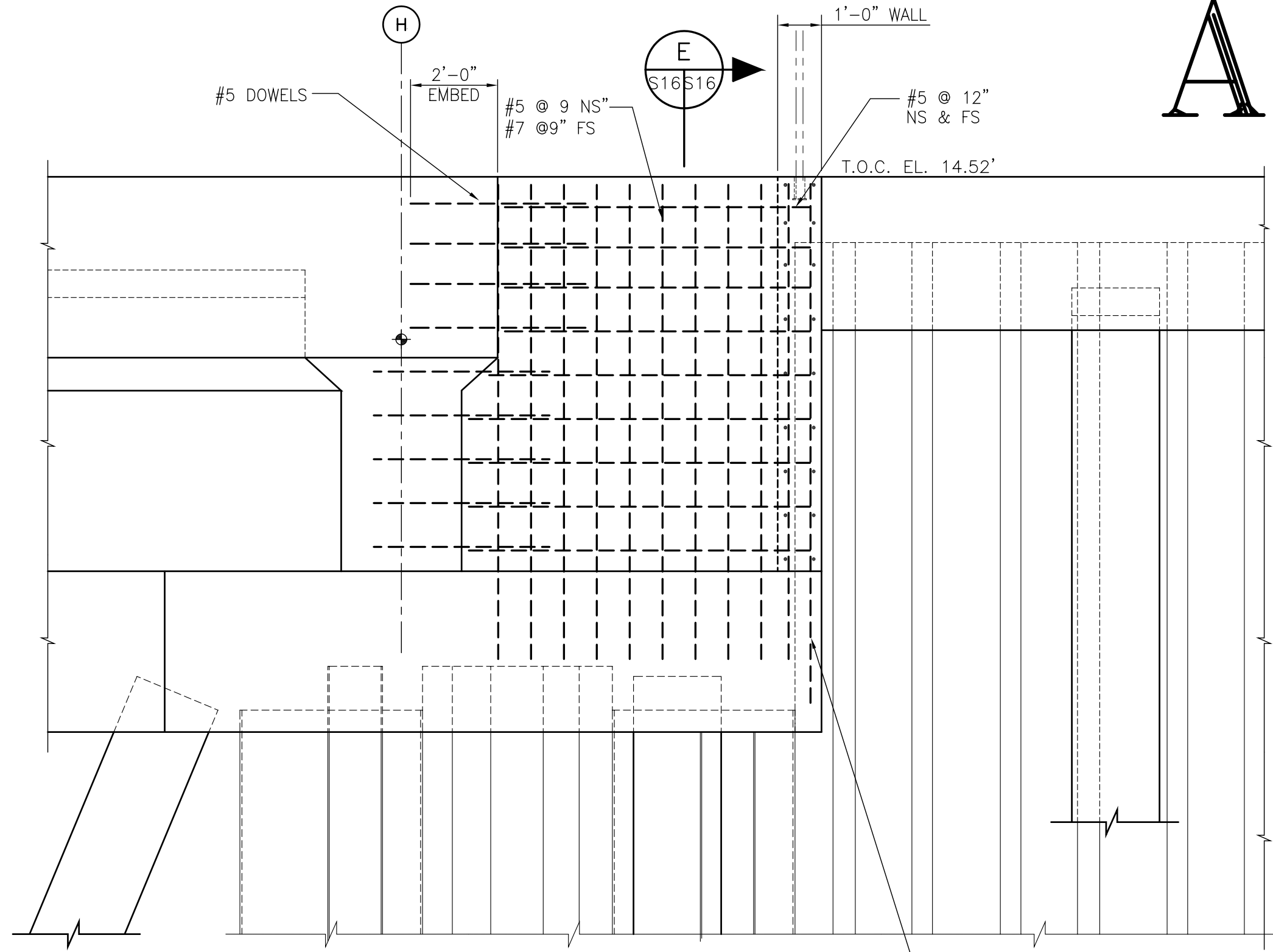
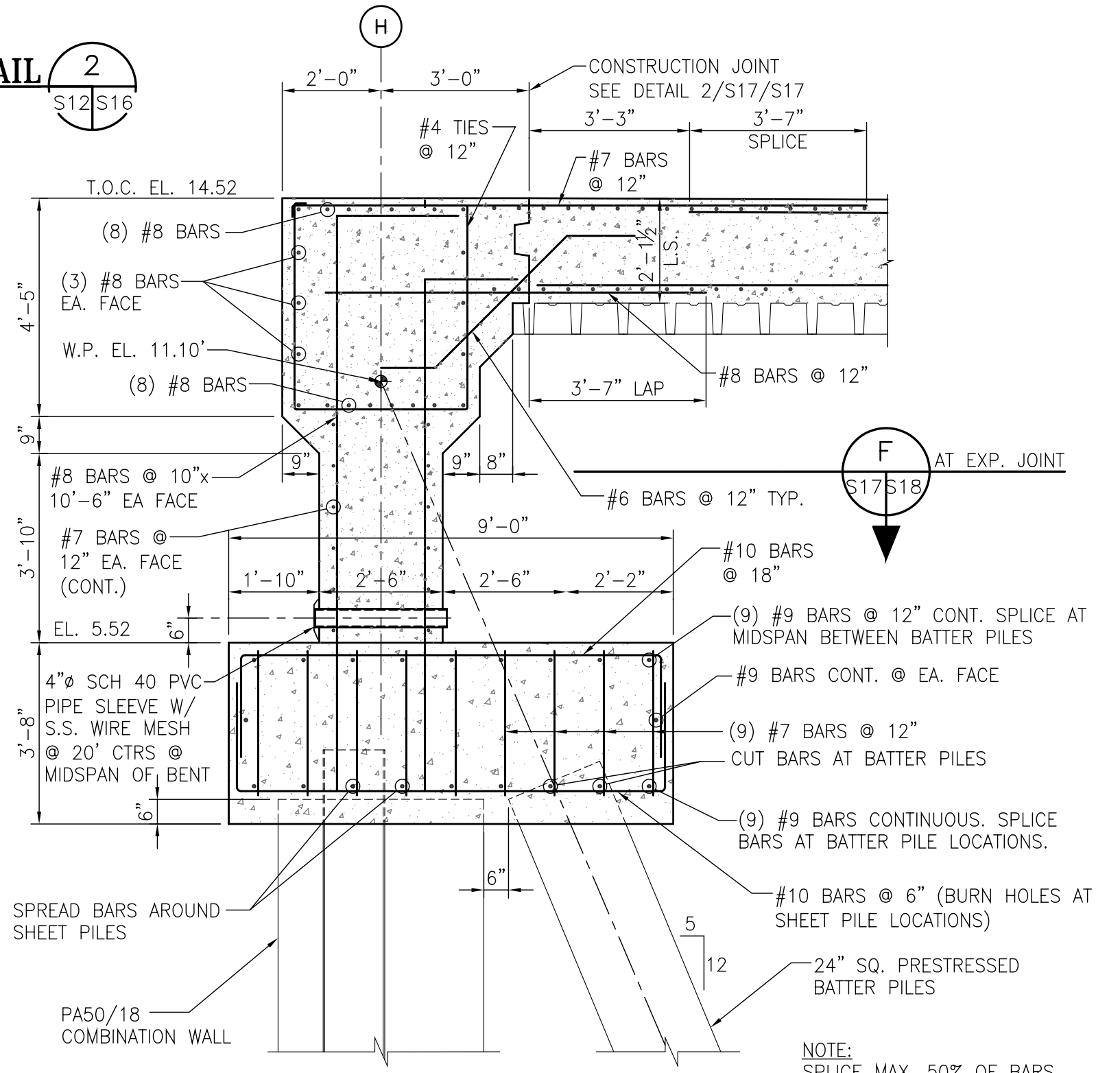
Drawn By: LRH	Date: 8/24/04
Checked By: RSG	Date: 11/18/04
Scale: 1"=20'	Job No. M1716
Drawing No. S12	
REV. 0	



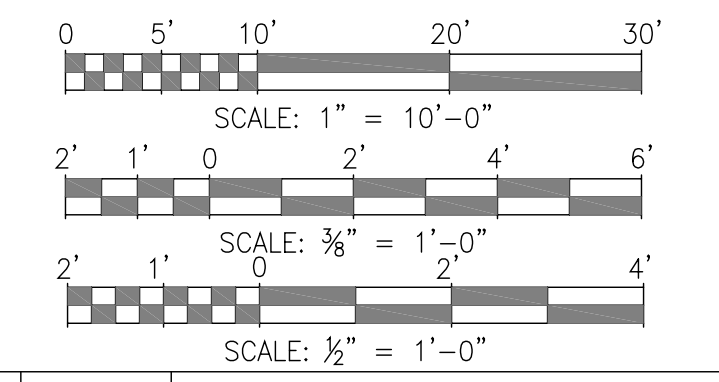
I:\Projects\Alabama\PORT\BATTER\BIBL\BIBL.dwg, 11/5/2007, 1:02:41 PM, Gary D. Ingram



PARTIAL PLAN DETAIL 2
 1"=10'-0"

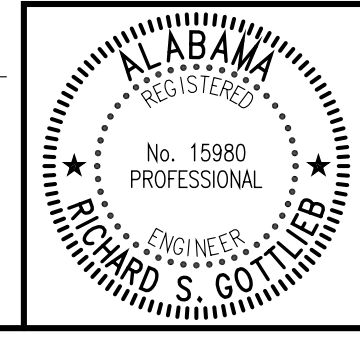


AS BUILT



REV.	DATE	DESCRIPTION	BY
0	11/02/07	AS BUILT	RSG

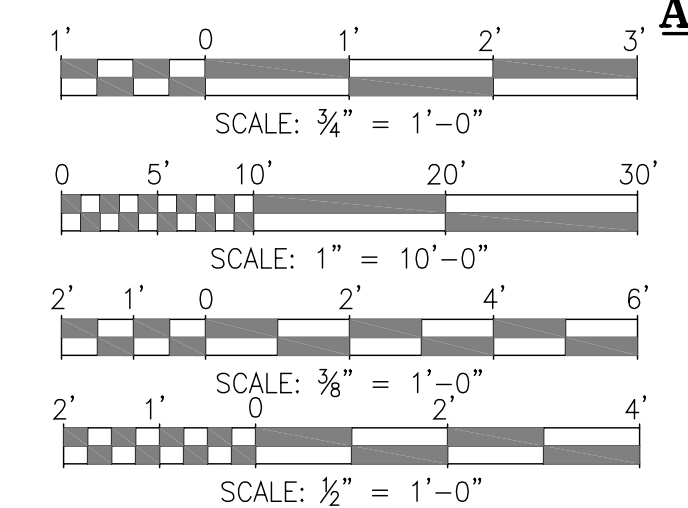
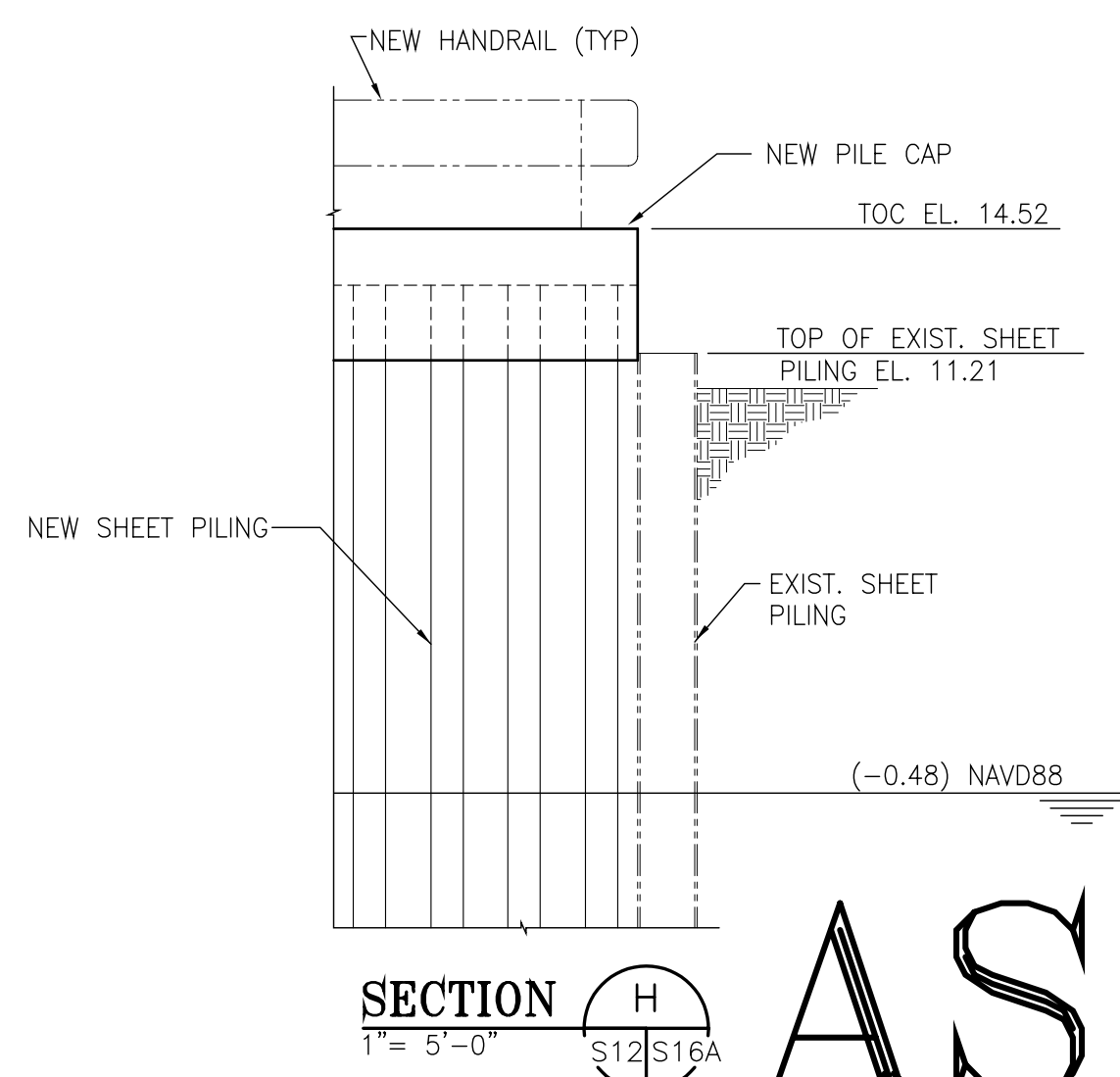
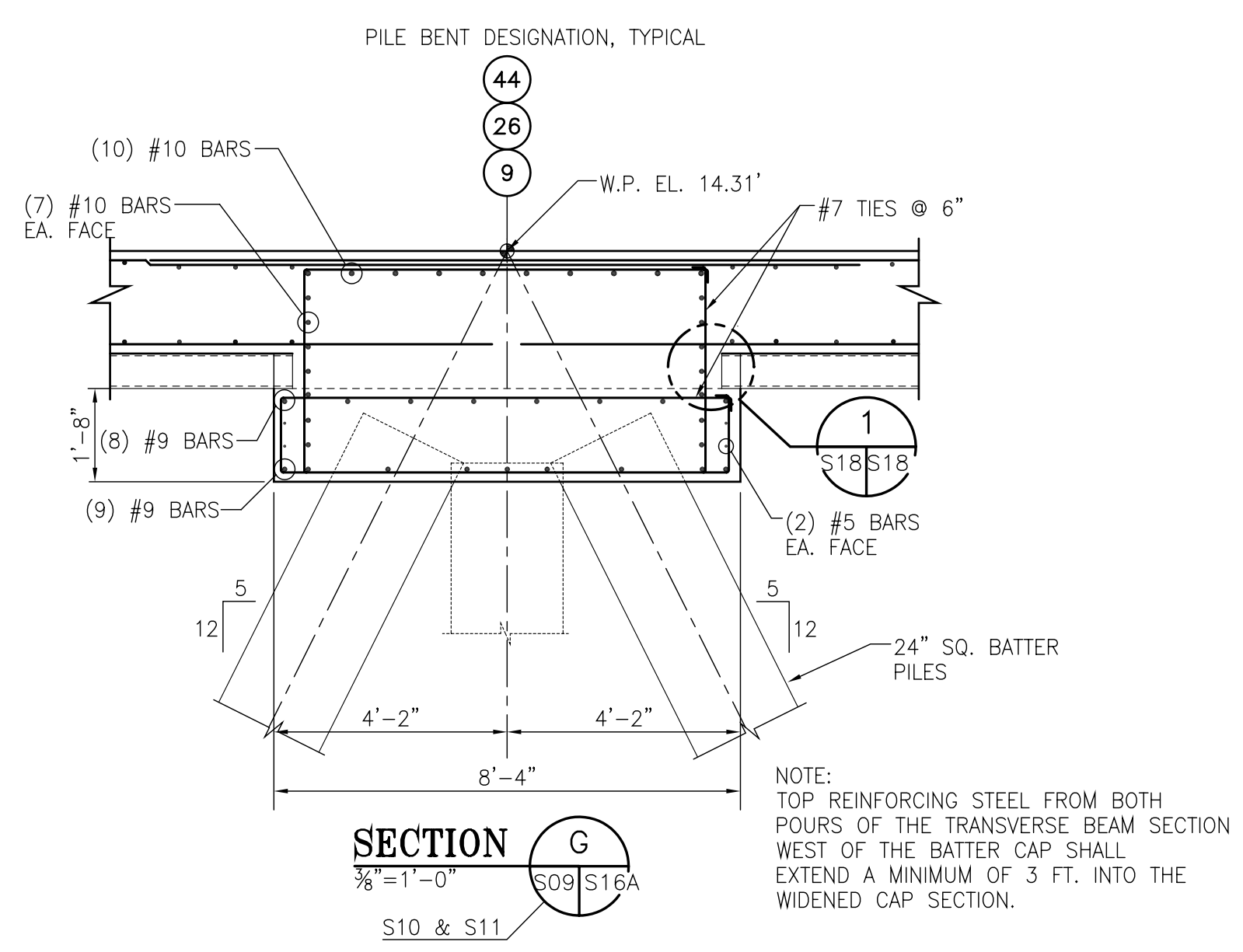
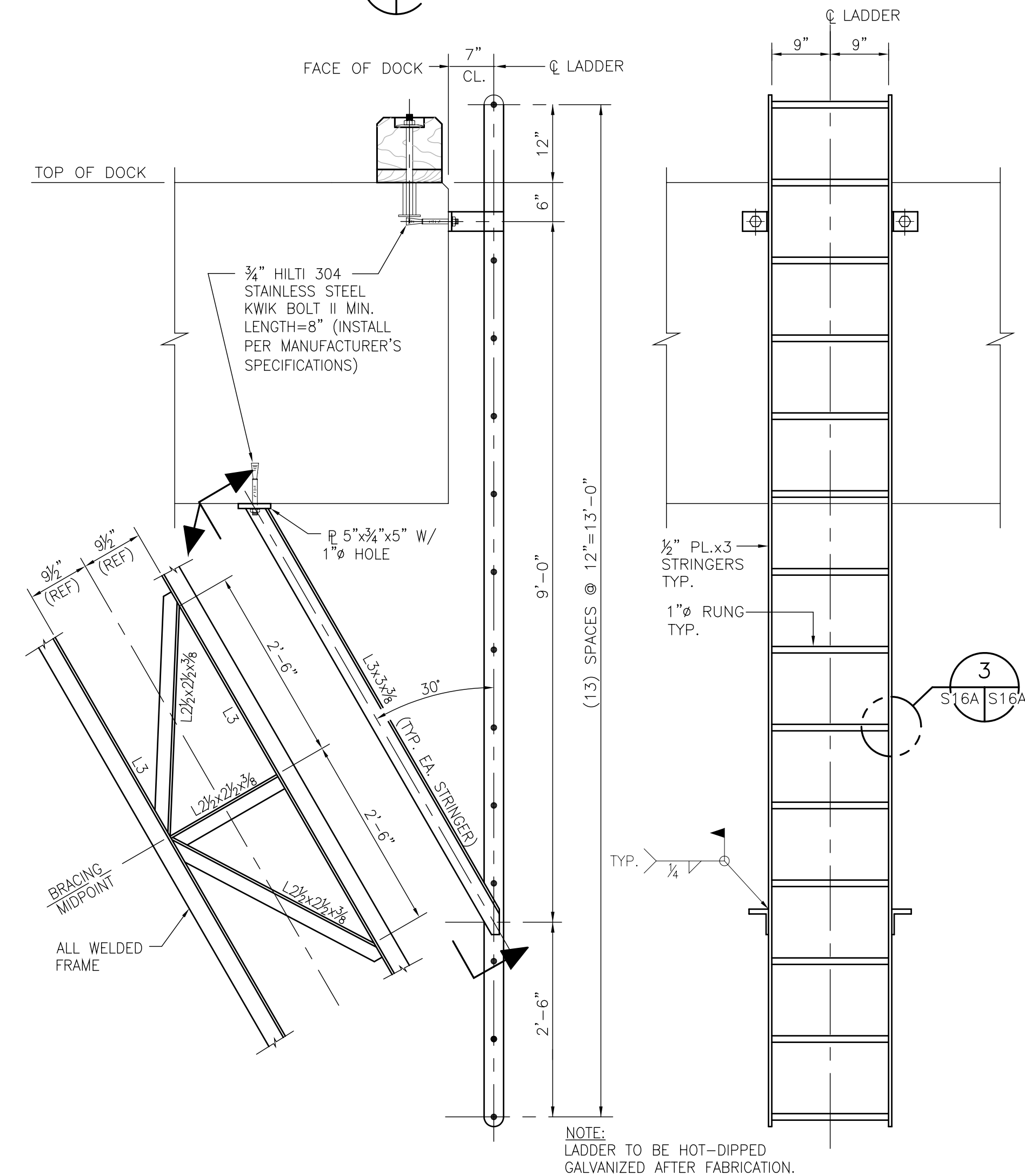
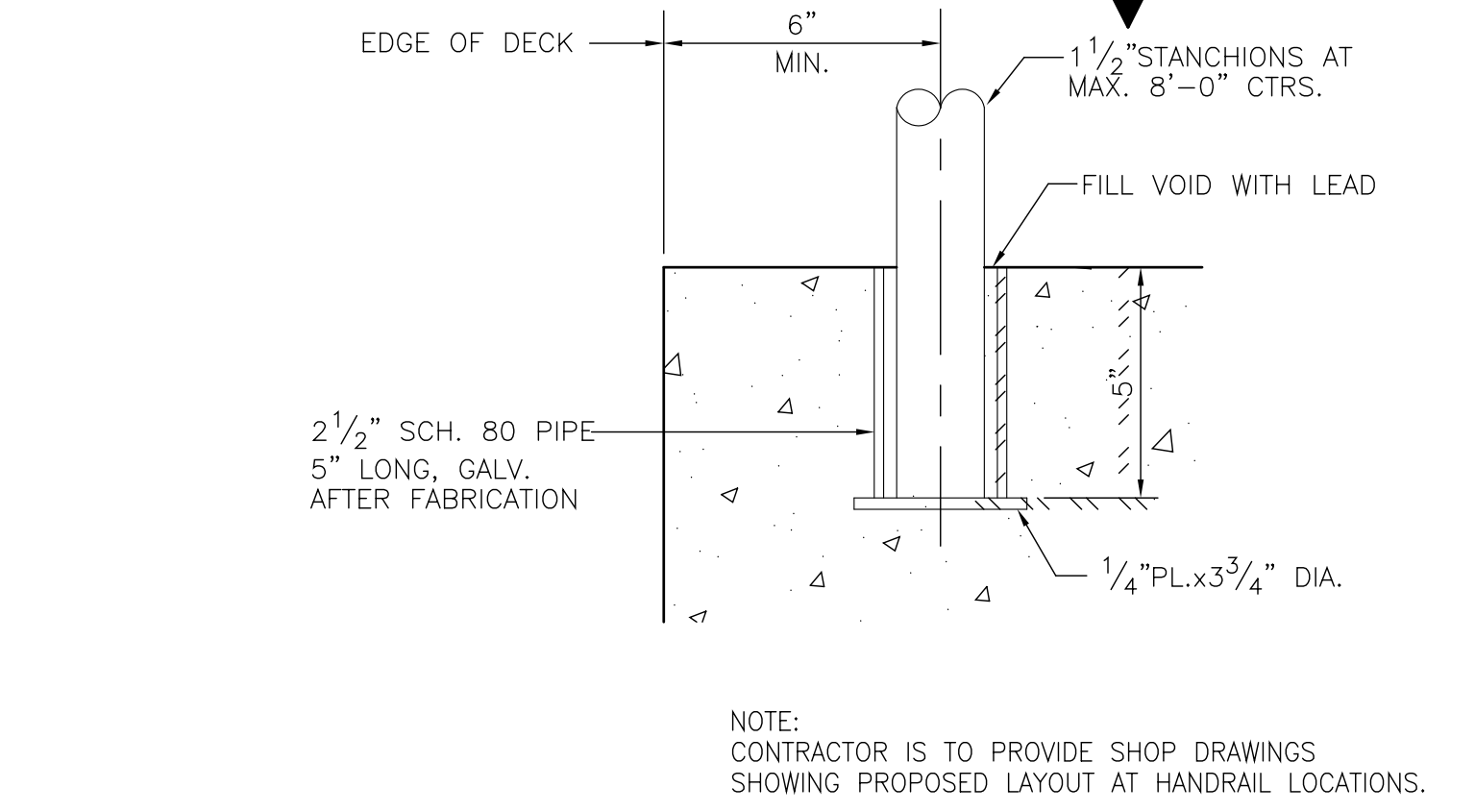
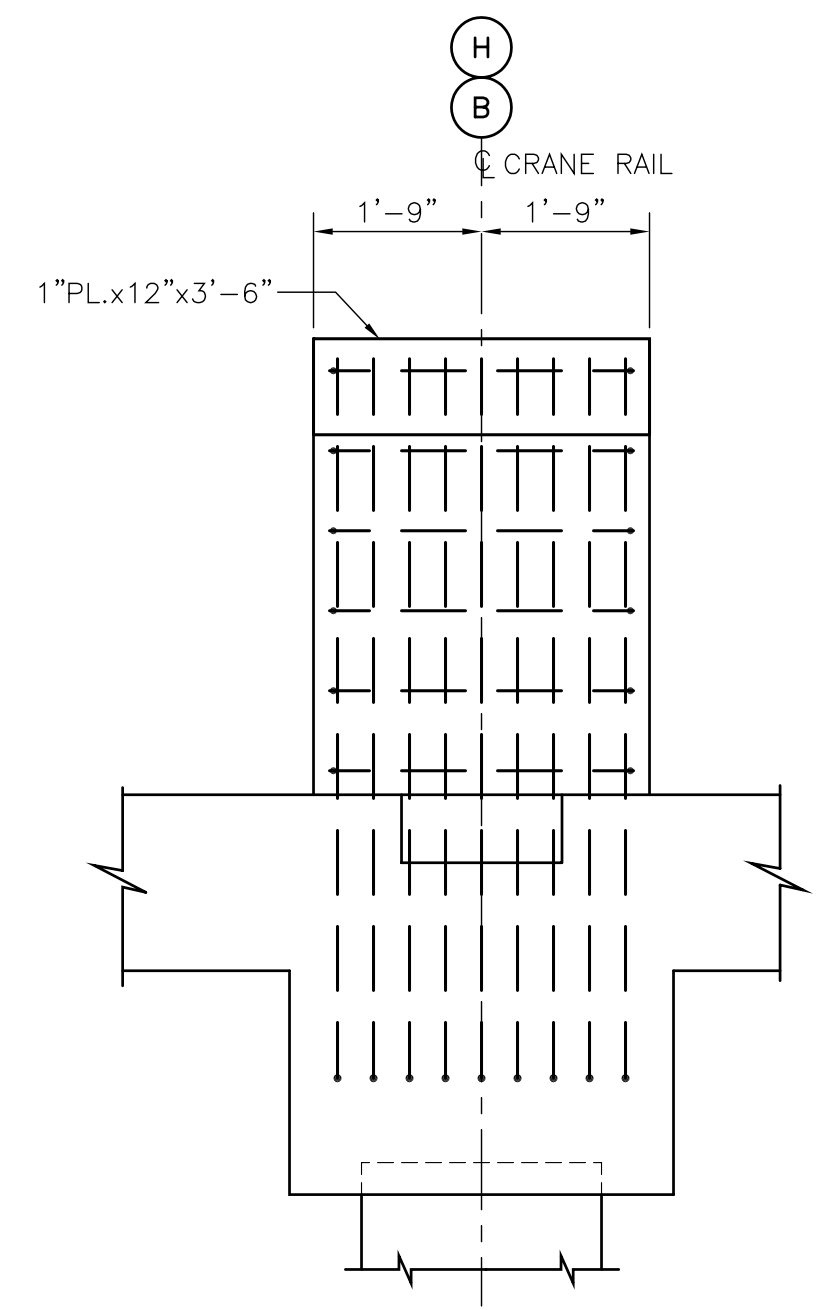
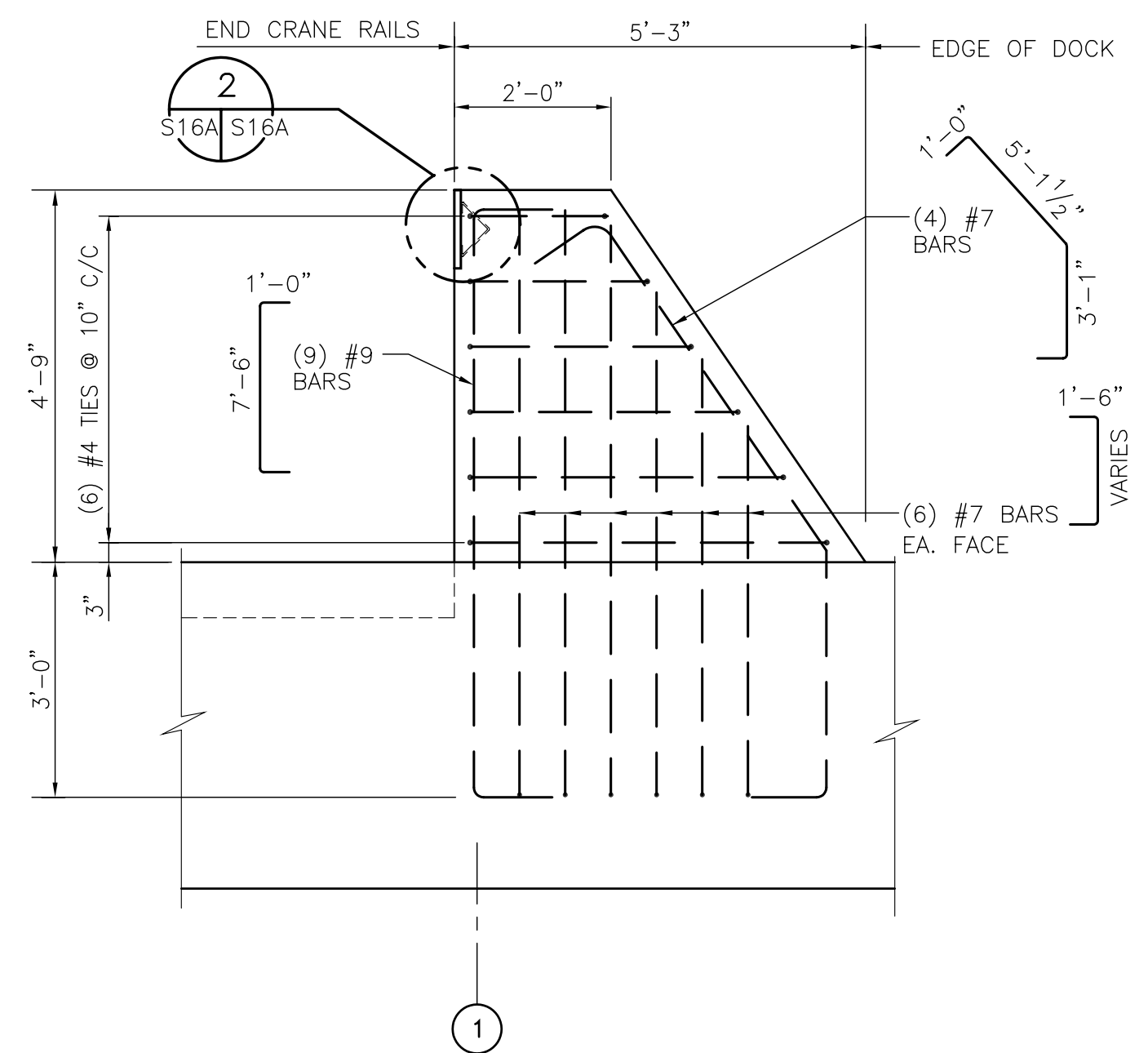
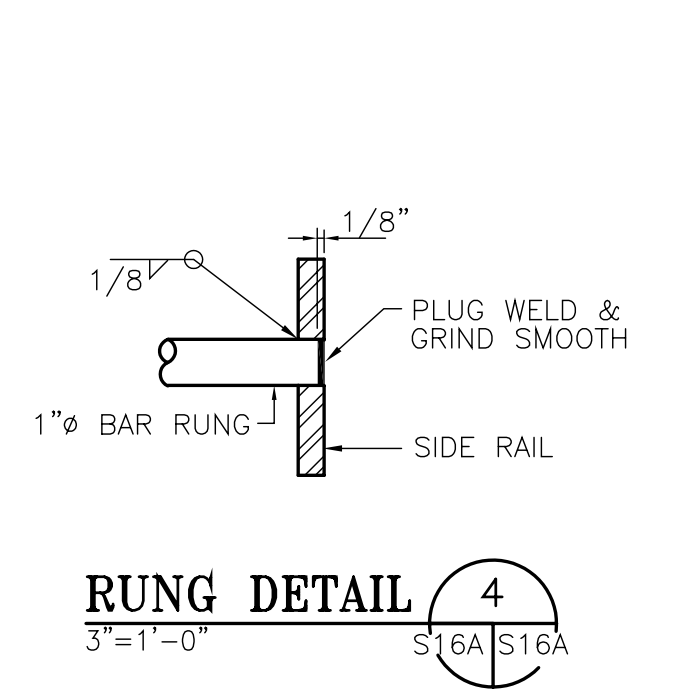
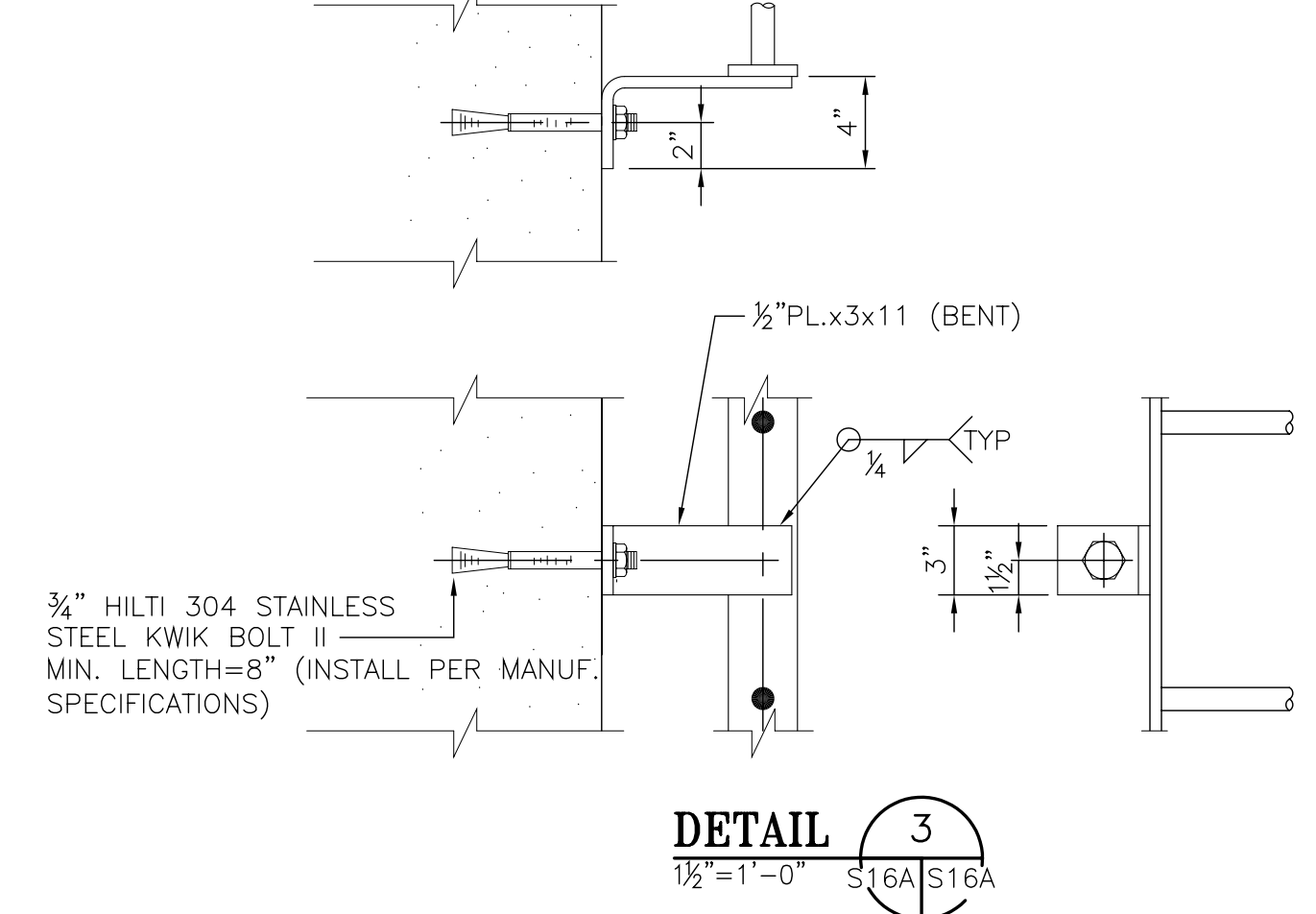
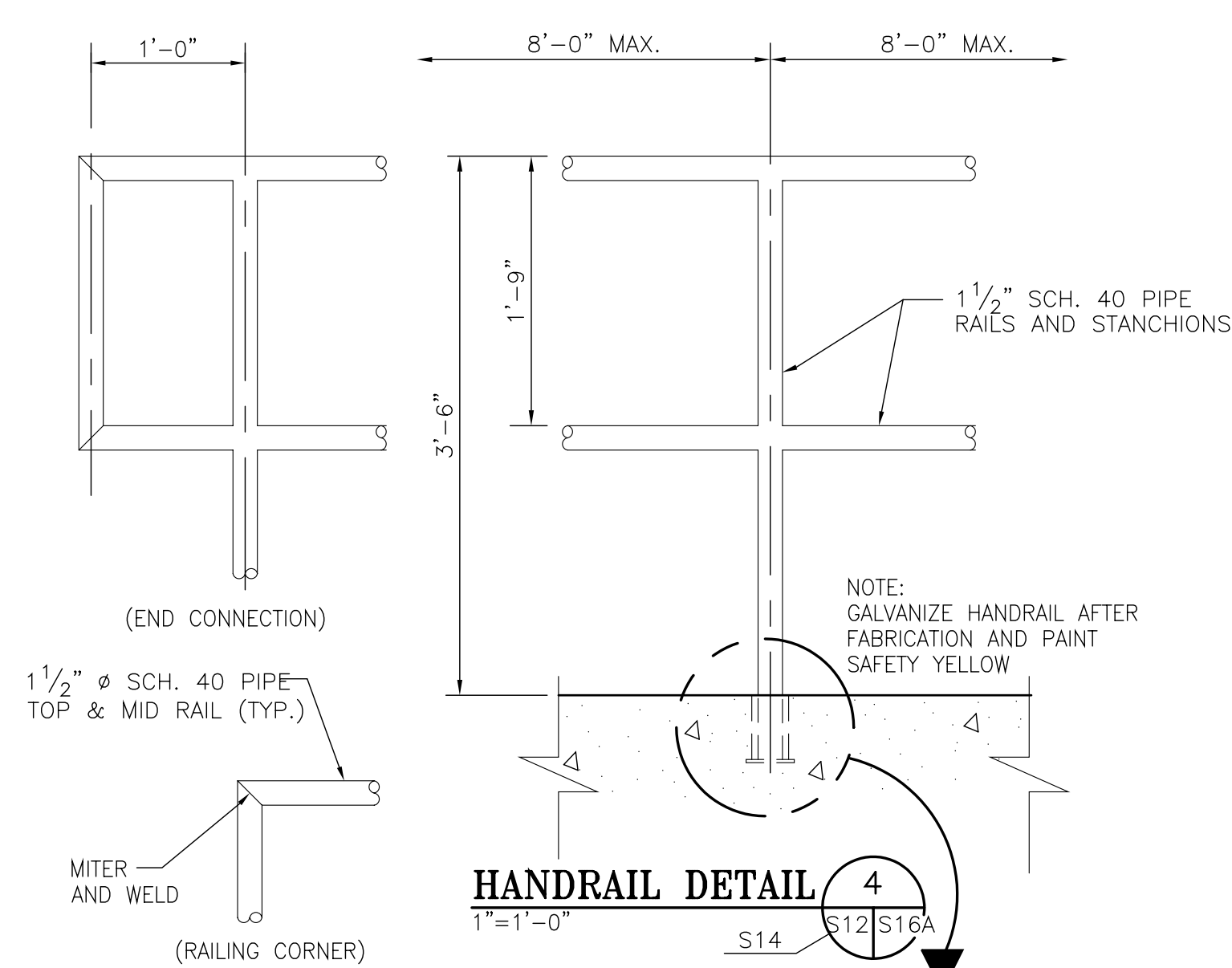
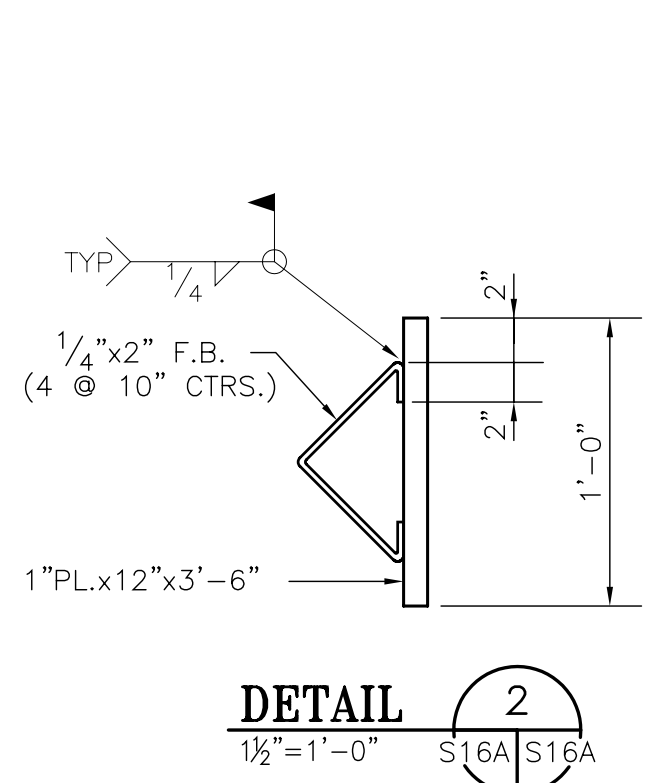
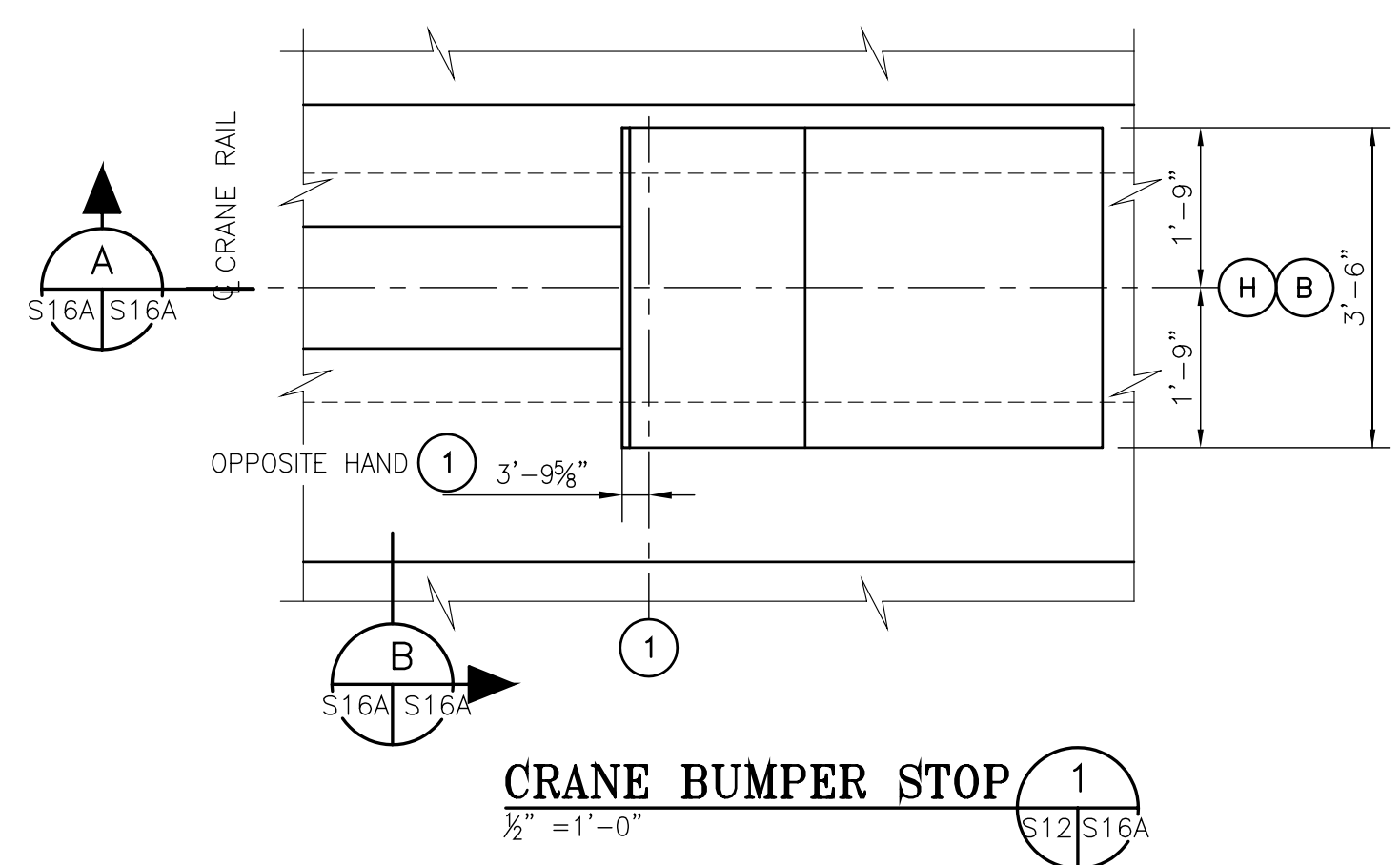
ALABAMA STATE PORT AUTHORITY
 MOBILE ALABAMA



GBB
 Gottlieb, Barnett & Bridges, LLC
 Consulting Engineers

Drawn By: LRH Date: 10/02/04
 Checked By: RSG Date: 11/18/04
 Scale: 1"=20' Job No. M1716 Drawing No. S16 REV. 0

CHOCTAW POINT TERMINAL STAGE ONE WHARF
MISCELLANEOUS SECTIONS AND DETAILS



REV.	DATE	AS BUILT	DESCRIPTION	RSG	BY
0	11/02/07	AS BUILT			

ALABAMA STATE PORT AUTHORITY
MOBILE ALABAMA

CHOCTAW POINT TERMINAL STAGE ONE WHARF

MISCELLANEOUS SECTIONS AND DETAILS

Drawn By: LRH Date: 10/02/04
Checked By: RSG Date: 11/18/04
Scale: 1"=20' Job No. M1716 Drawing No. S16A REV. 0

AS BUILT

