

ELECTRICAL SITE PLAN
SCALE: 1" = 30'

REVISIONS			
NO.	DATE	DESCRIPTION	APPROVED
0	12/5/03	ISSUED FOR BID	
1	4/11/05	AS-BUILT	

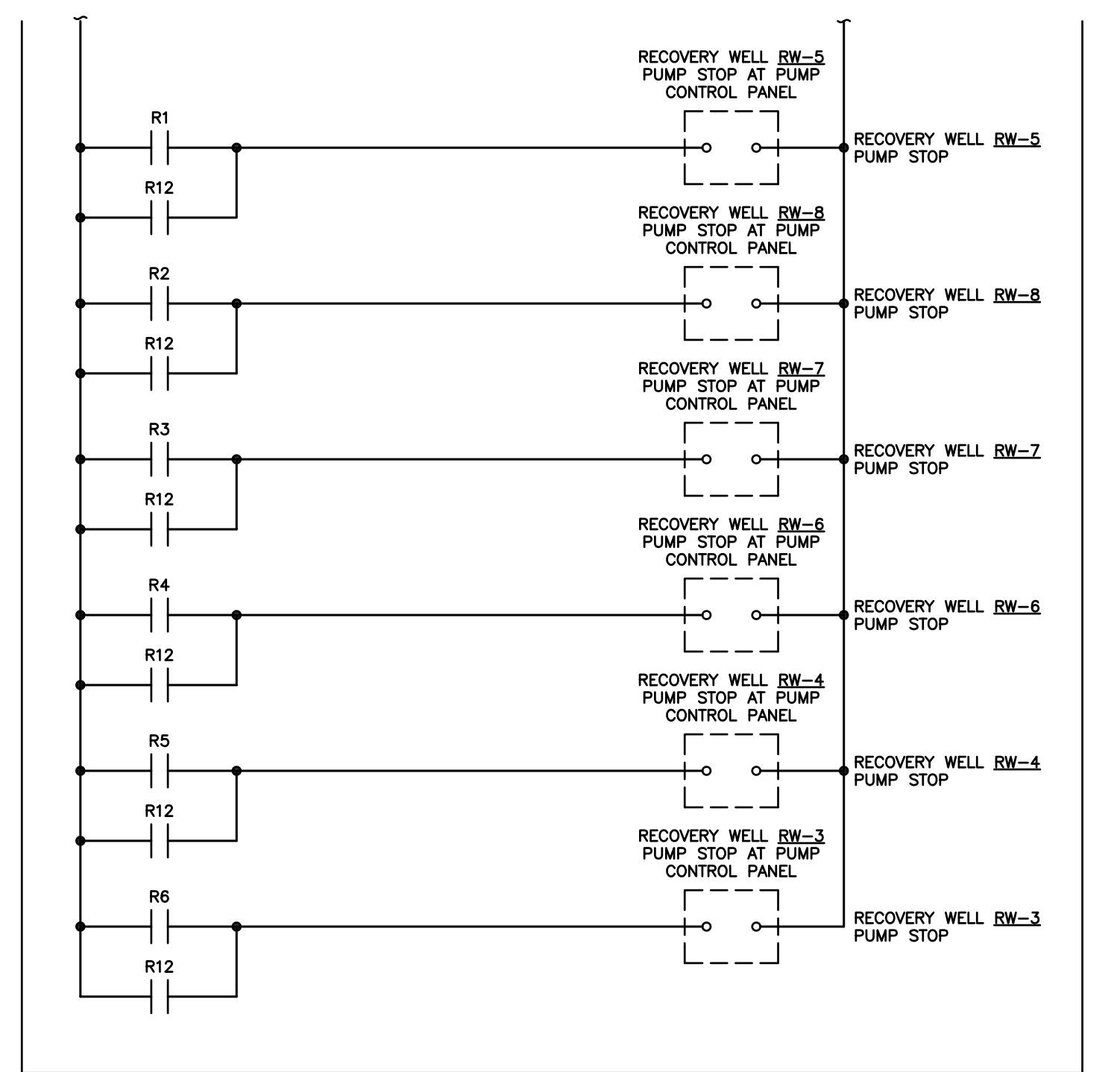
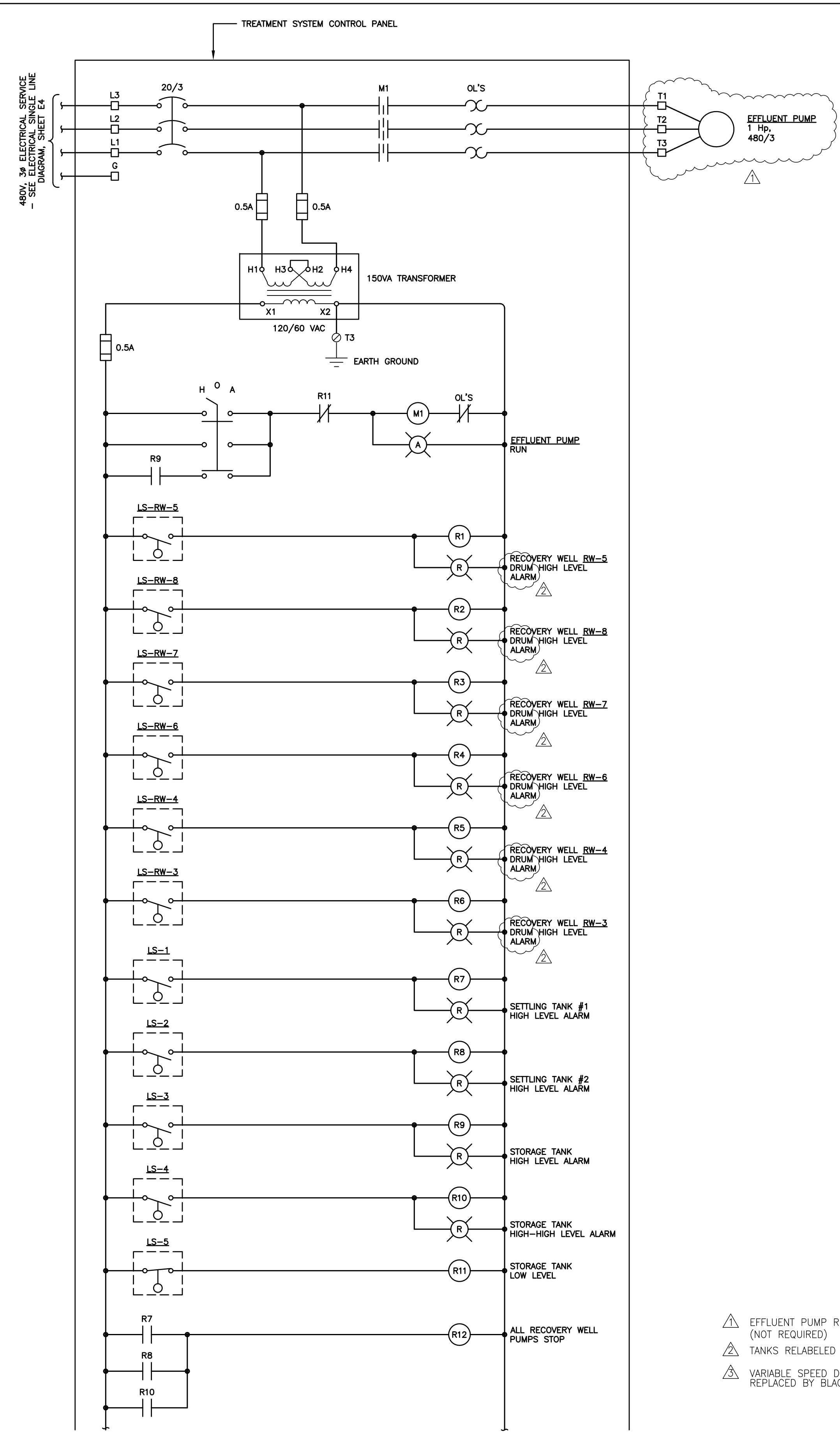
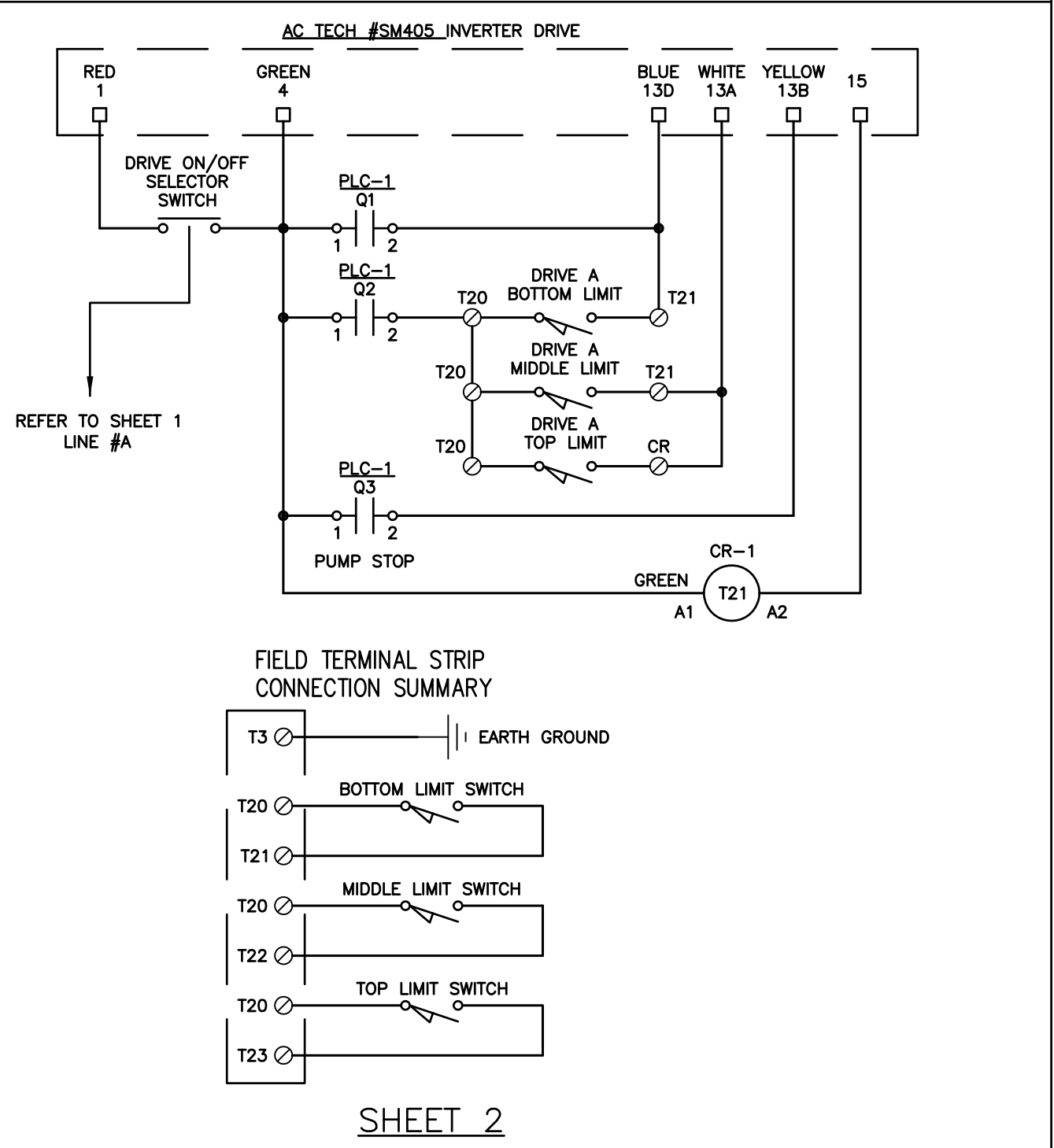
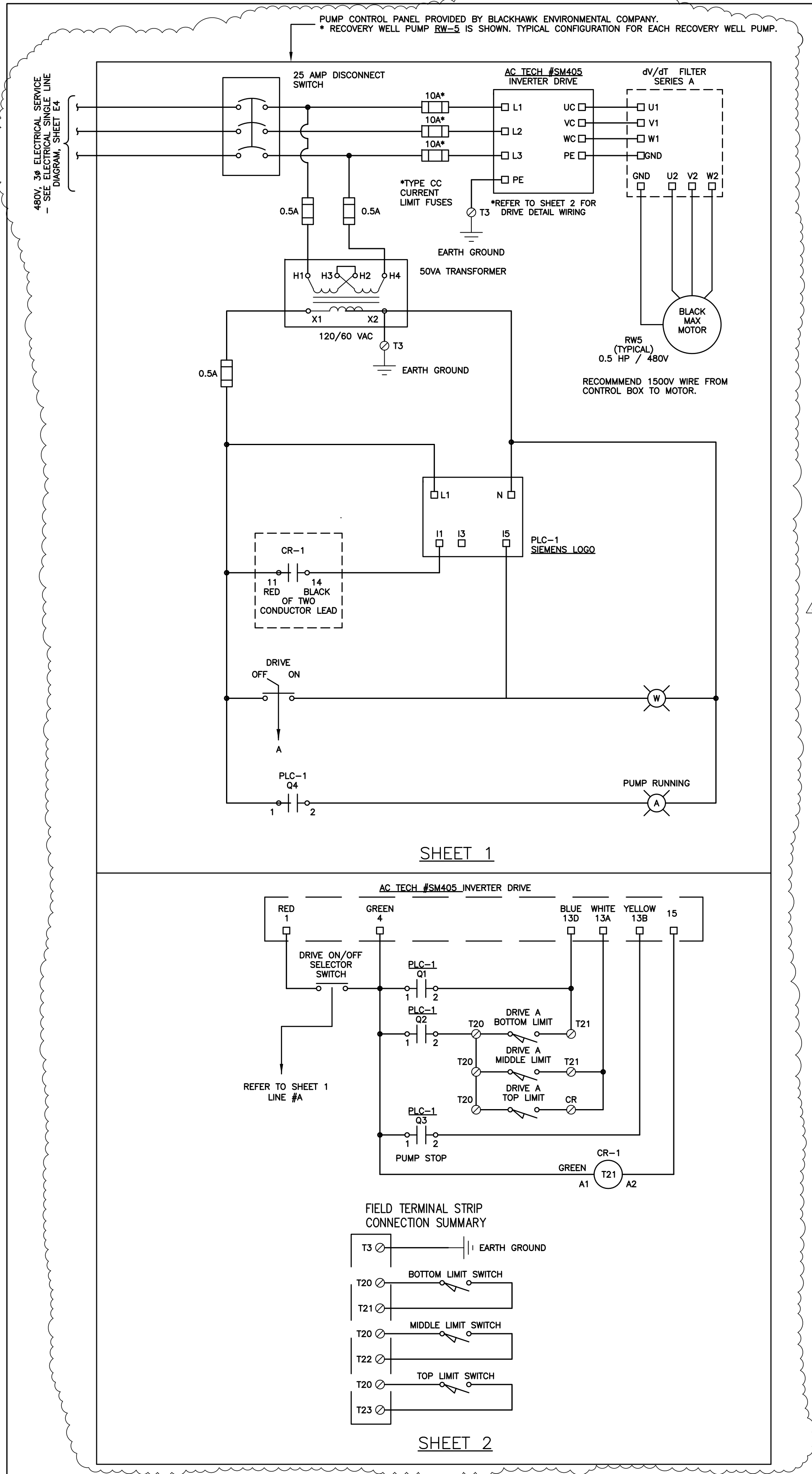
DESIGNED BY: M. GRIFFITH
DRAWN BY: M. GRIFFITH
CHECKED BY: M. GRIFFITH
DRAWING DATE: 12/10/02



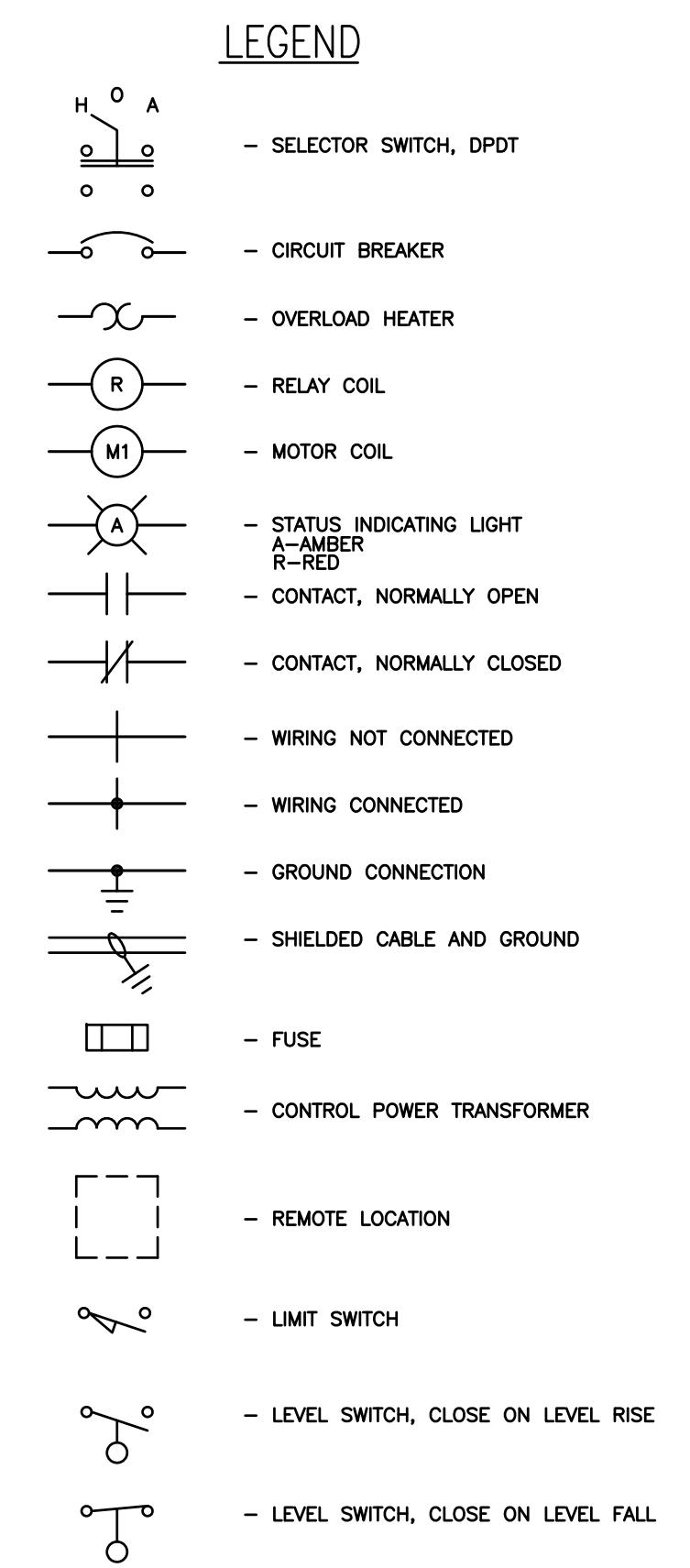
**CORRECTIVE MEASURES
IMPLEMENTATION
ALABAMA STATE PORT AUTHORITY
AWTC SITE AND AREA
MOBILE, ALABAMA**

**ELECTRICAL
SITE PLAN
(AS-BUILT)**

E1



NOTE: CONTRACTOR TO INSTALL SIGNAL AMPLIFIER ON ALL CONTROLS TO RECOVERY WELLS AS REQUIRED FOR PROPER OPERATION.



△ EFFLUENT PUMP REMOVED (NOT REQUIRED)

△ TANKS RELABELLED AS DRUMS

△ VARIABLE SPEED DRIVE REPLACED BY BLACKHAWK

REVISIONS			
NO.	DATE	DESCRIPTION	APPROVED
0	12/5/03	ISSUED FOR BID	
1	4/11/05	AS-BUILT	

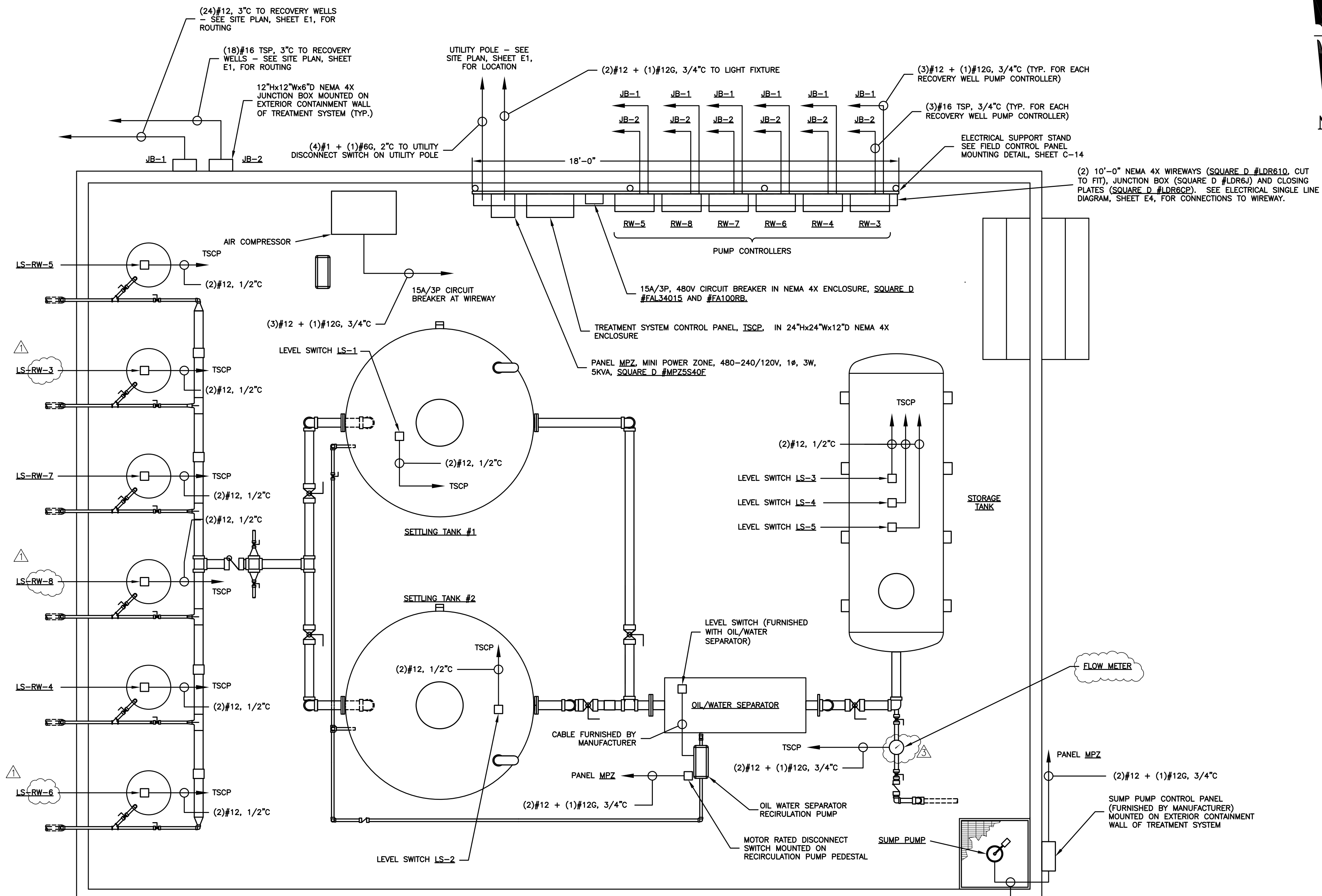
DESIGNED BY:	M. GRIFFITH
DRAWN BY:	M. GRIFFITH
CHECKED BY:	M. GRIFFITH
DRAWING DATE:	12/10/02



CORRECTIVE MEASURES IMPLEMENTATION
ALABAMA STATE PORT AUTHORITY
AWTC SITE AND AREA
MOBILE, ALABAMA

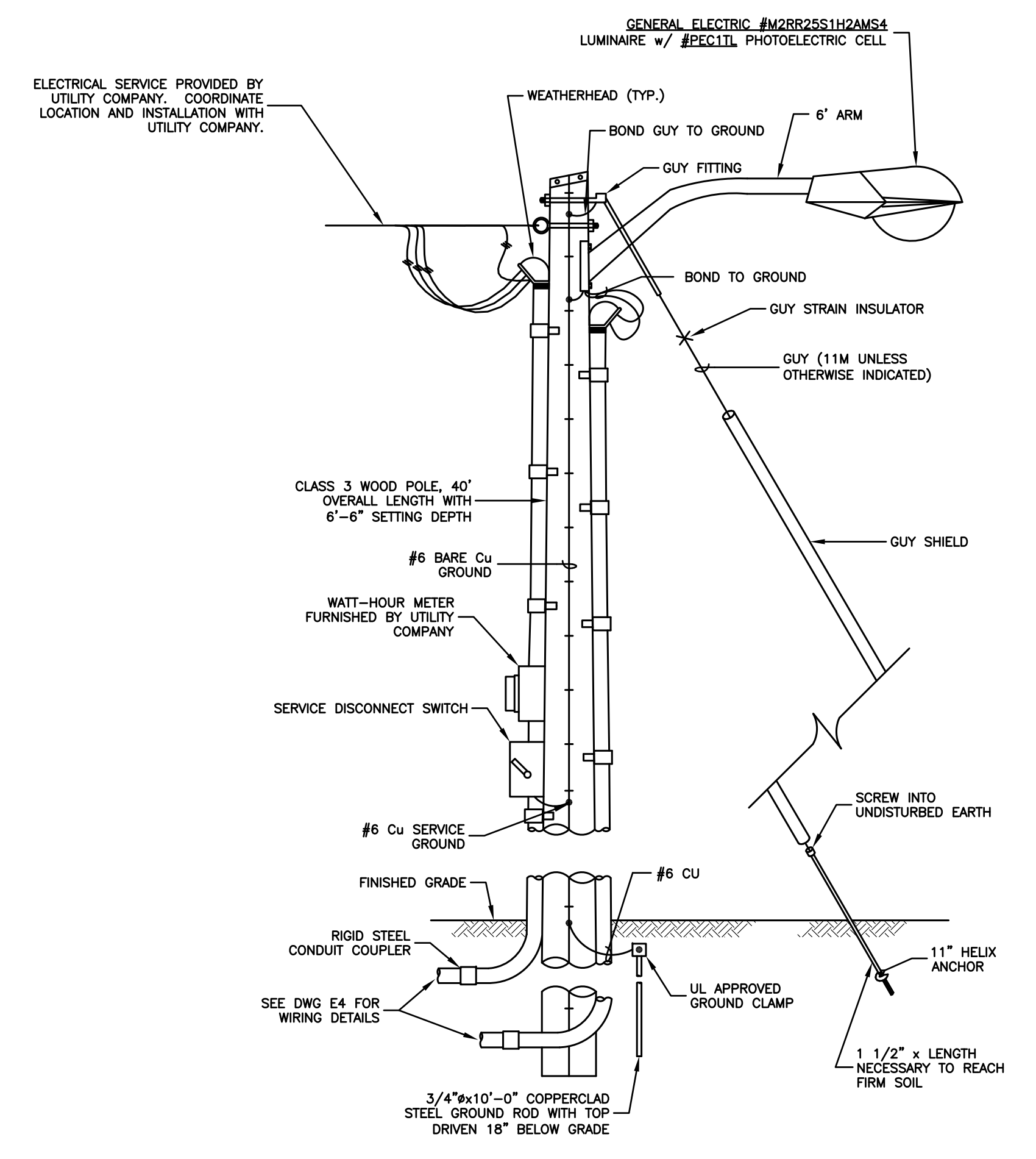
ELECTRICAL CONTROL SCHEMATIC (AS-BUILT)

E2

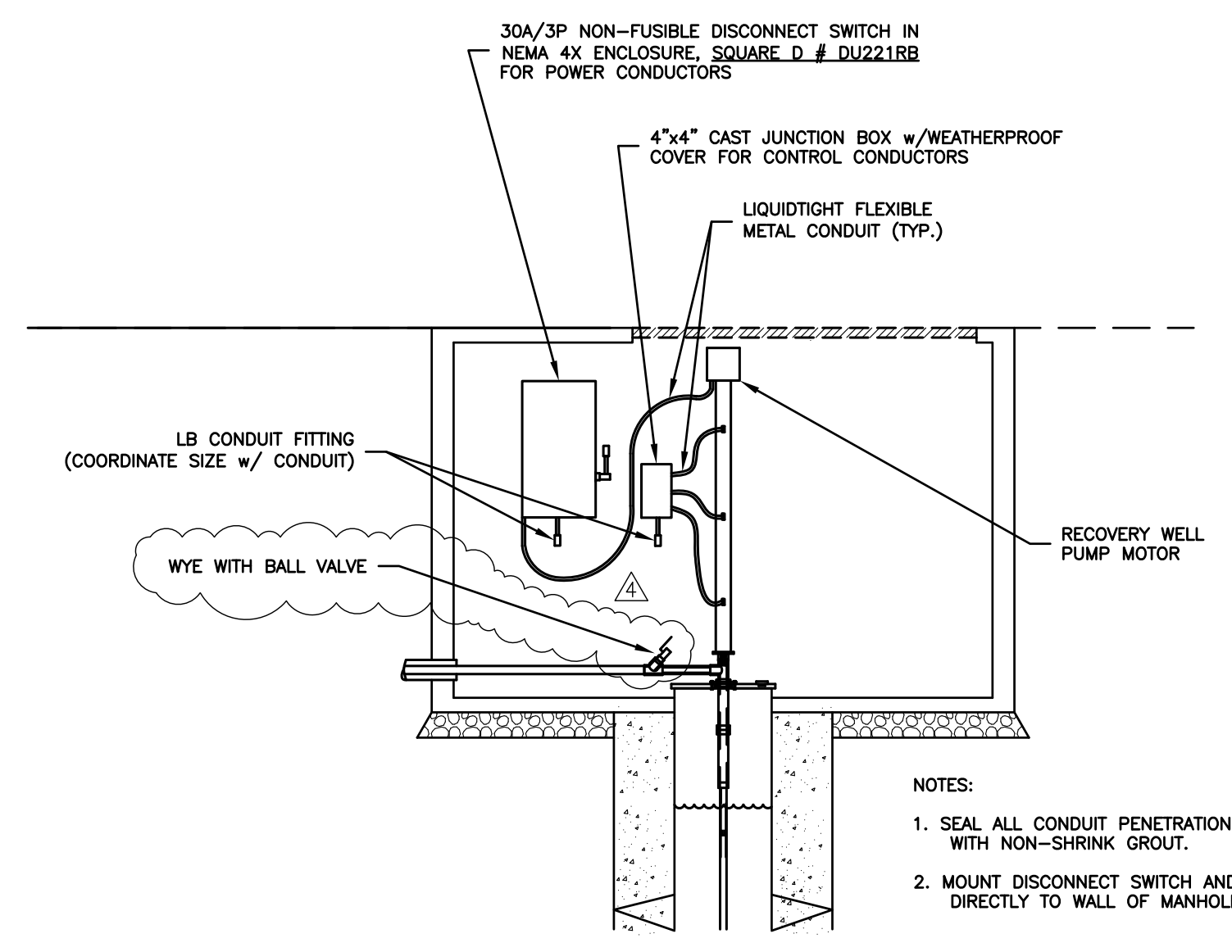


TREATMENT SYSTEM PLAN
SCALE: 3/8" = 1'-0"

- △ PIPING REROUTED
- △ FLOW METER ADDED
- △ EFFLUENT PUMP REMOVED (NOT REQUIRED)
- △ PRESSURE RELIEF VALVE REMOVED



SERVICE POLE DETAIL
N.T.S.



TYPICAL RECOVERY WELL LAYOUT
SCALE: N.T.S.

REVISIONS			
NO.	DATE	DESCRIPTION	APPROVED
0	12/5/03	ISSUED FOR BID	
1	4/11/05	AS-BUILTS	

DESIGNED BY: M. GRIFFITH
DRAWN BY: M. GRIFFITH
CHECKED BY: M. GRIFFITH
DRAWING DATE: 12/10/02



CORRECTIVE MEASURES IMPLEMENTATION
ALABAMA STATE PORT AUTHORITY
AWTC SITE AND AREA
MOBILE, ALABAMA

ELECTRICAL DETAILS (AS-BUILT)

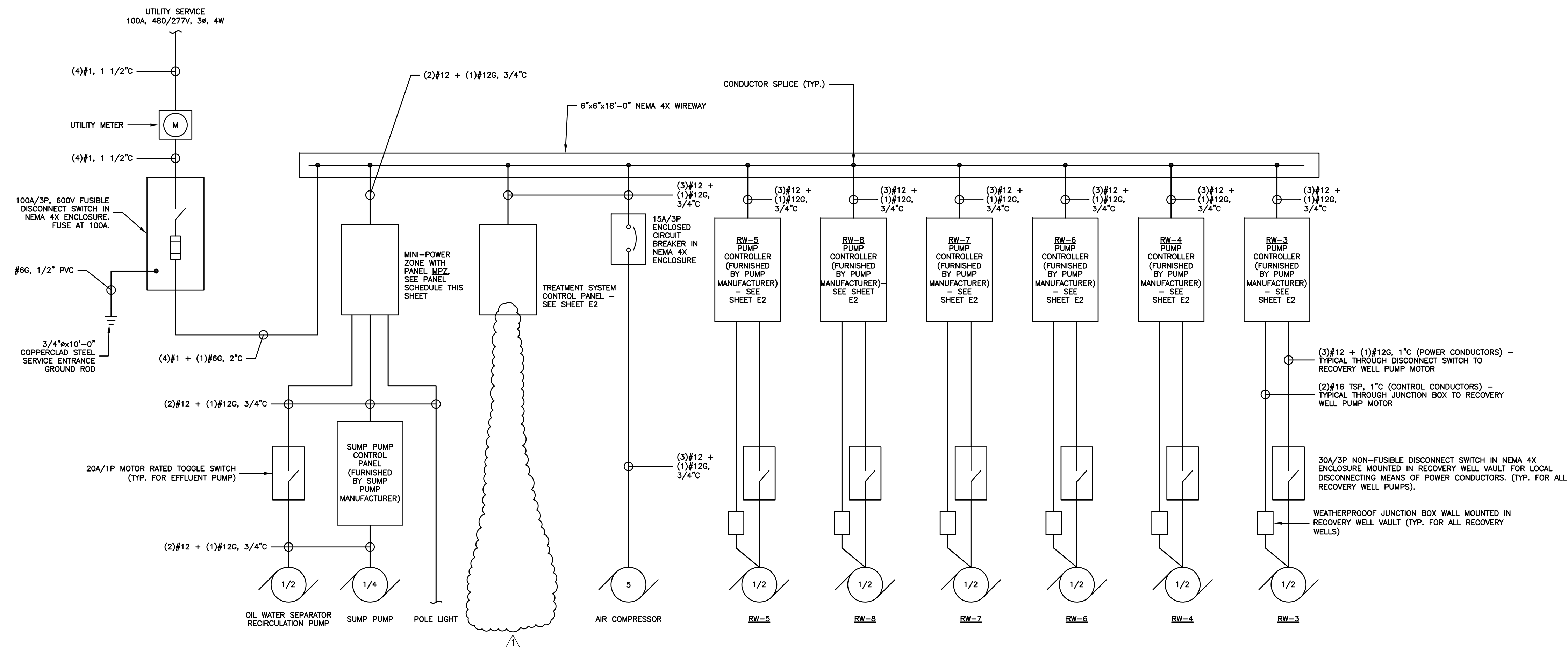
E3

PANEL	MPZ	SERVICE 120/240V, 1φ, 3W			
MAINS	20A MCB (PRI)	30A MCB (SEC)	TRIM	OUTDOOR	AIC 14,000 AMPS
CKT.	C/B	LOAD	LOAD		C/B
1	20/1	SUMP PUMP CONTROL PANEL	OWS RECIRC. PUMP		20/1
3	20/1	LIGHTING	SPARE		20/1
5	20/1	SPARE	SPARE		20/1

PANEL MPZ SCHEDULE

SCALE: NONE

NOTE: REFER TO ELECTRICAL SINGLE LINE DIAGRAM, SHEET E4, FOR FEEDER INFORMATION CONCERNING WELL PUMPS, COMPRESSOR, EFFLUENT PUMP AND OIL/WATER SEPARATOR RECIRCULATION PUMP.



ELECTRICAL SINGLE LINE DIAGRAM

NOTE: SEE PANEL MPZ SCHEDULE ON THIS SHEET FOR 120 VOLT CIRCUIT FEEDER INFORMATION.

△ EFFLUENT PUMP REMOVED (NOT REQUIRED)

NOTE: ALL ENCLOSURES WILL BE NEMA 4X FIBERGLASS

REVISIONS			
NO.	DATE	DESCRIPTION	APPROVED
0	12/5/03	ISSUED FOR BID	
1	4/11/05	AS-BUILTS	

DESIGNED BY: M. GRIFFITH
 DRAWN BY: M. GRIFFITH
 CHECKED BY: M. GRIFFITH
 DRAWING DATE: 12/10/02

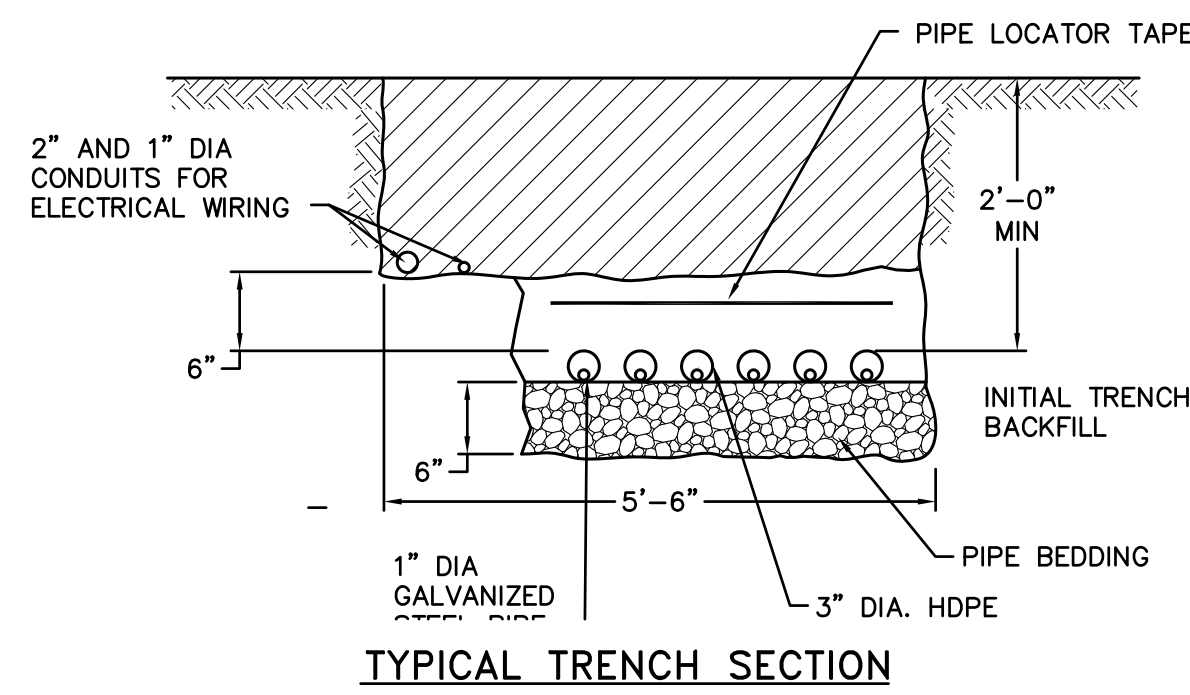


**CORRECTIVE MEASURES
 IMPLEMENTATION
 ALABAMA STATE PORT AUTHORITY
 AWTC SITE AND AREA
 MOBILE, ALABAMA**

**ELECTRICAL
 SINGLE LINE DIAGRAM
 (AS-BUILT)**

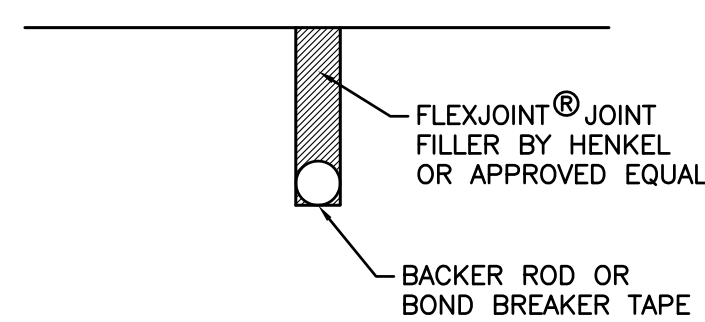
E4

FINAL TRENCH BACKFILL



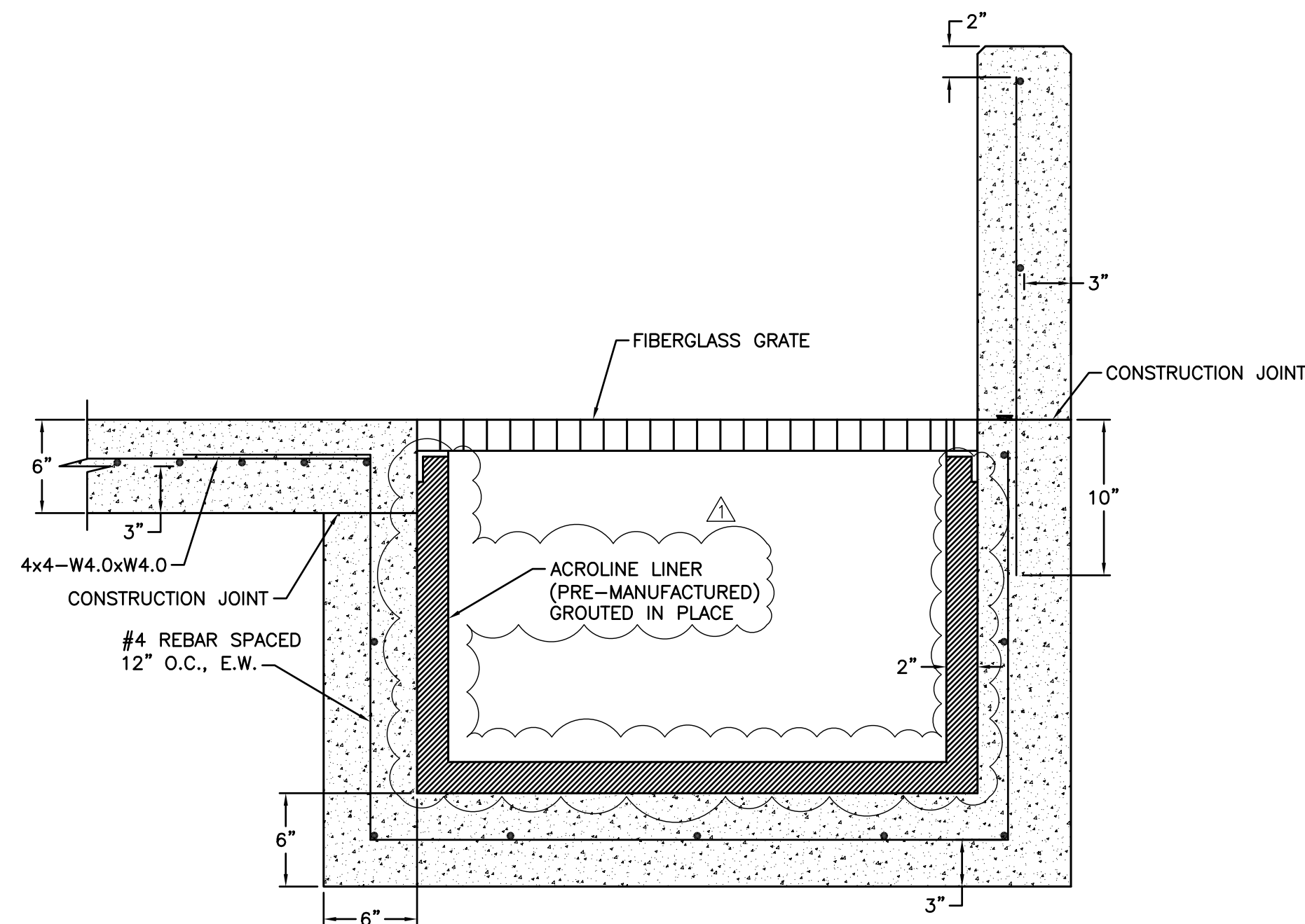
TYPICAL TRENCH SECTION

SECTION A
SCALE: N.T.S. C-14 C-13



TYPICAL CONTRACTION JOINT

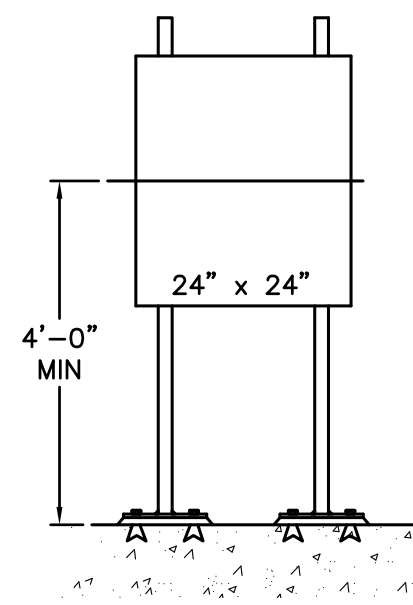
DETAIL 4
SCALE: 1'-1/2"=1'-0" C-14



TYPICAL SUMP SECTION

SECTION C
SCALE: 1-1/2"=1'-0" C-14 M-4

L 2" x 2" x 1/4" TYP.
WITH TOP CAP, PAINT YELLOW

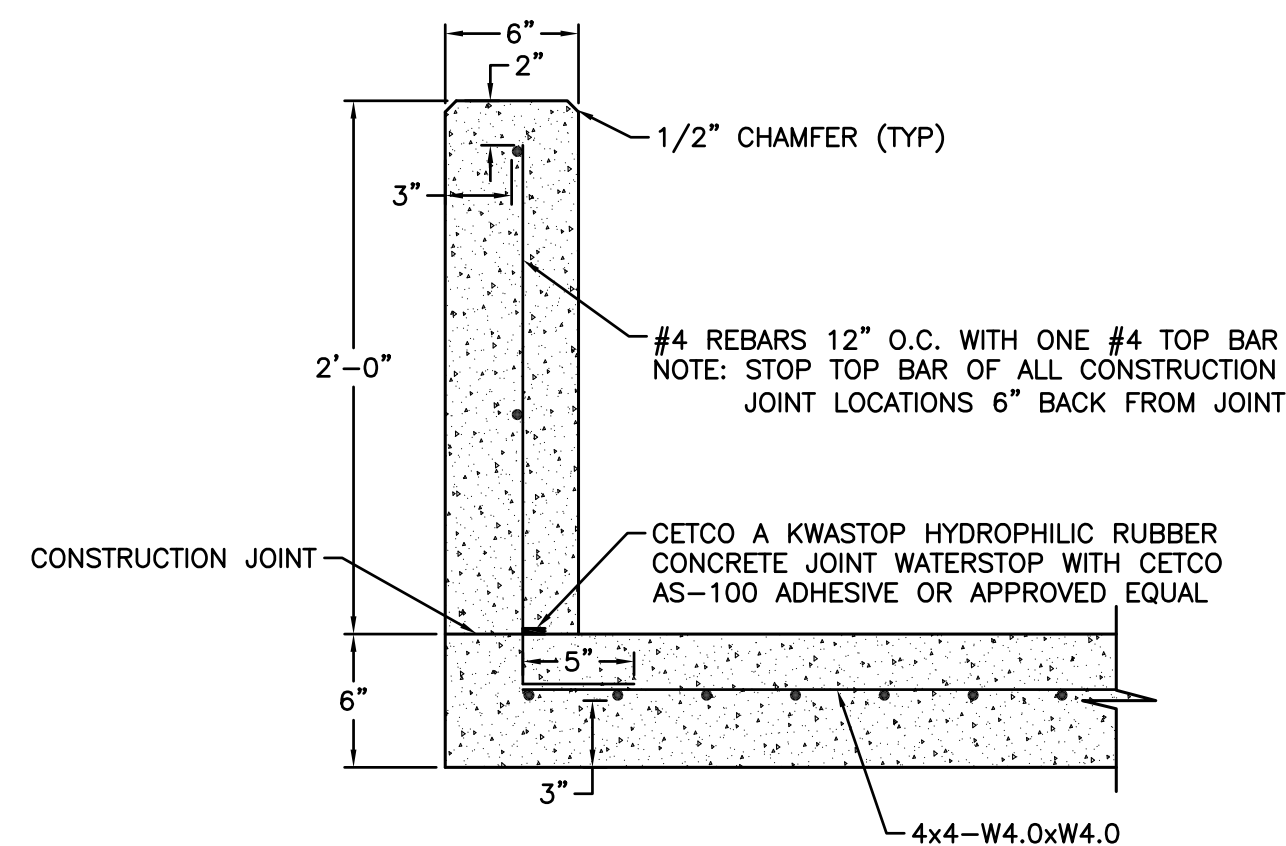


CONTROL/ELECTRICAL PANEL

WELD
(4) 3/8" x 5" L SS
CONCRETE ANCHORS TYP.
PL 1/2" x 12" x 12" TYP.,
PAINT YELLOW
1" GROUT TYP.

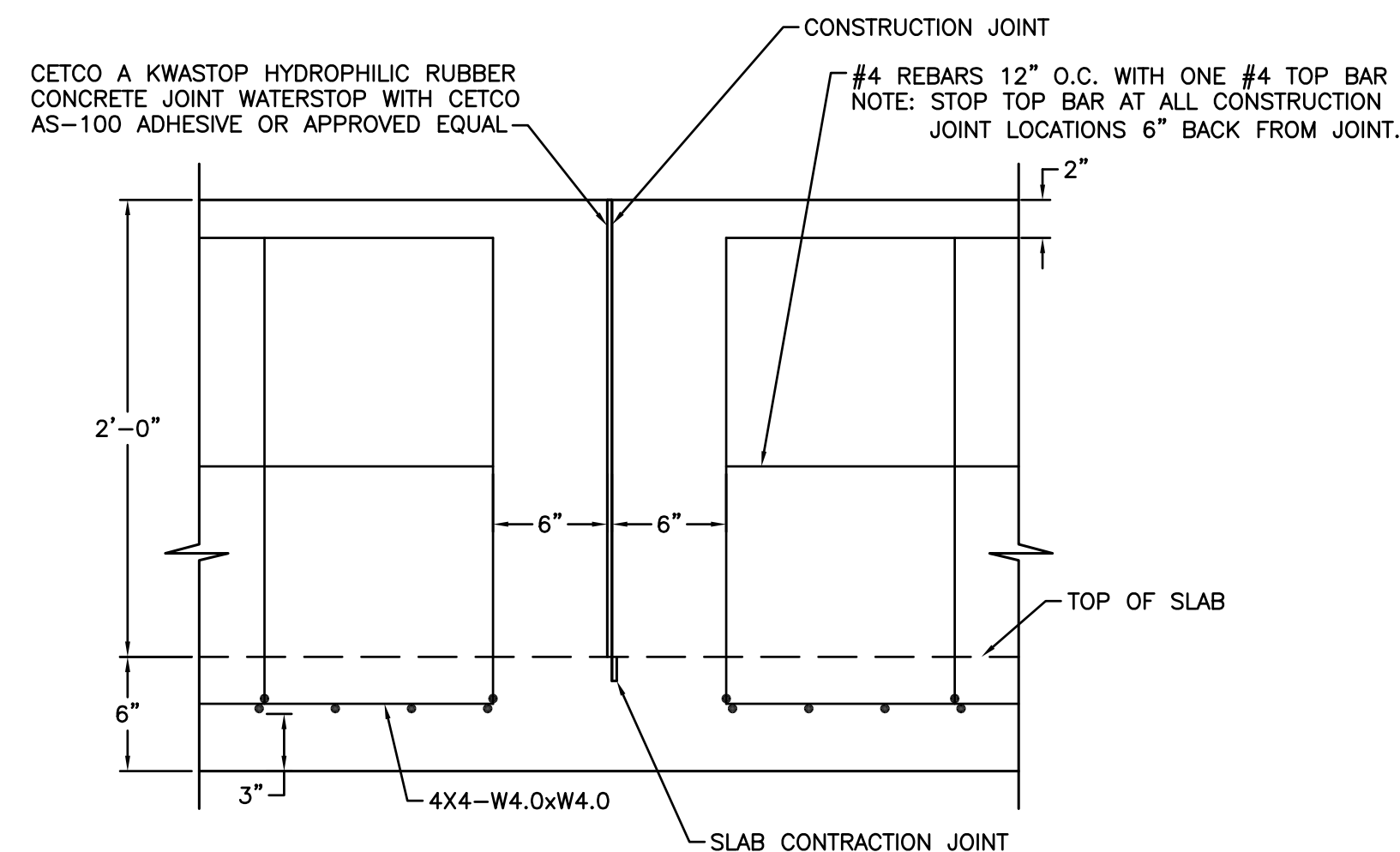
FIELD CONTROL PANEL MOUNTING DETAIL

DETAIL 2
SCALE: N.T.S. C-14 M-4



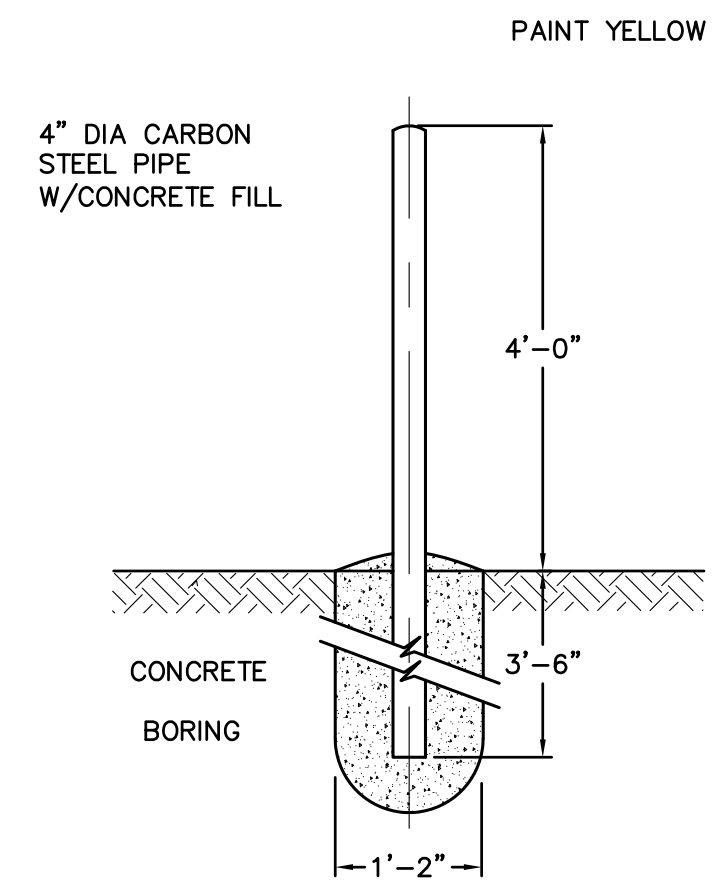
TYPICAL CONTAINMENT WALL SECTION

DETAIL 5
SCALE: 1-1/2"=1'-0" C-14 M-4



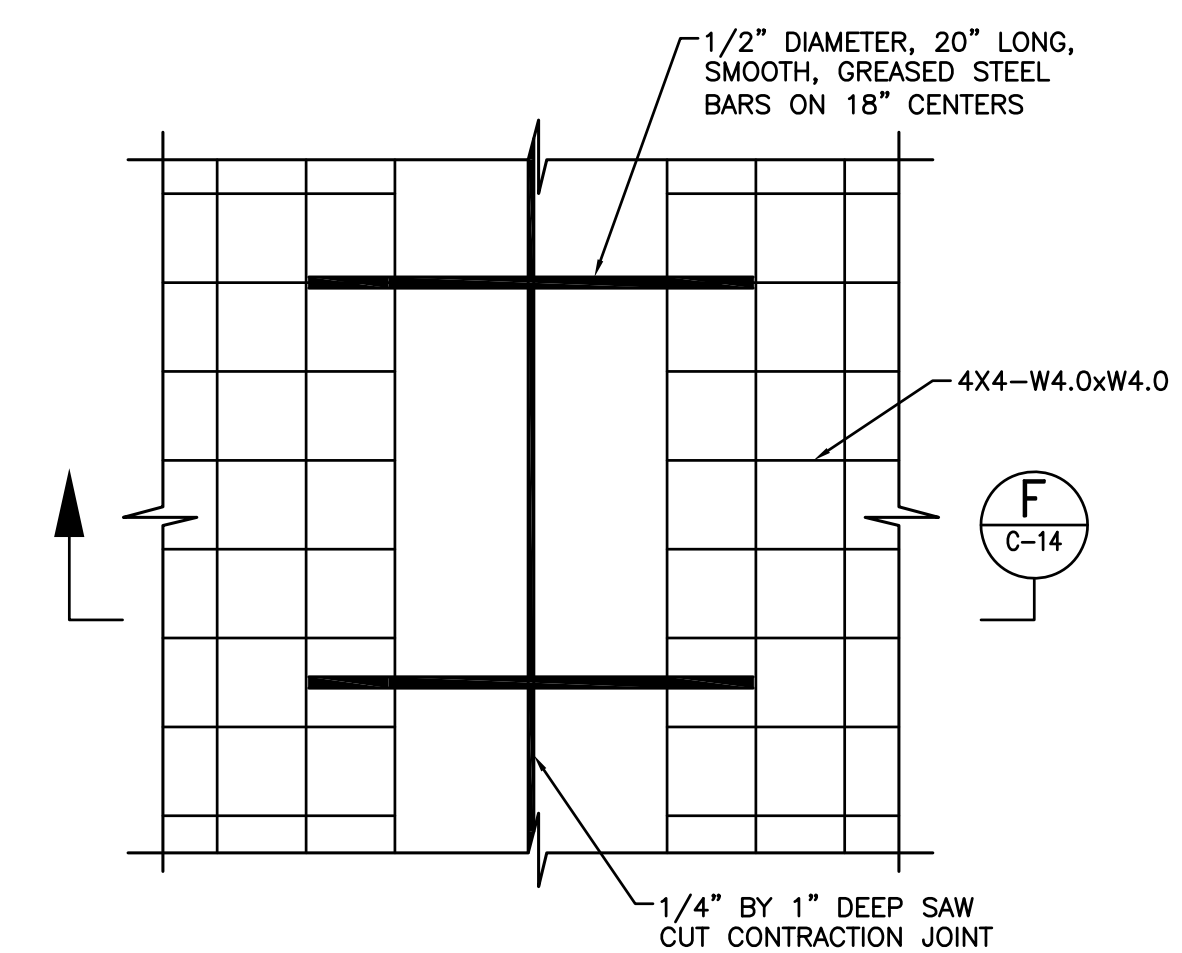
TYPICAL CONSTRUCTION JOINT SECTION

SECTION E
SCALE: 1-1/2"=1'-0" C-14 M-4



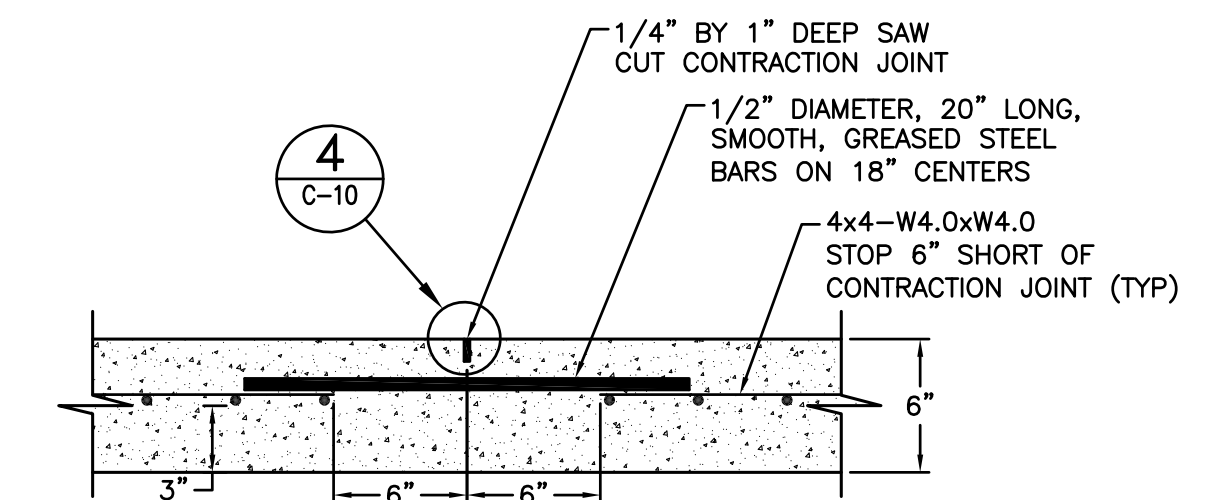
4" BOLLARD POST

DETAIL 3
SCALE: N.T.S. C-14 C-13



TYPICAL SLAB CONTRACTION JOINT

SECTION B
SCALE: 1-1/2"=1'-0" C-14 M-4



SLAB CONTRACTION JOINT

SECTION F
SCALE: 1-1/2"=1'-0" C-14

REVISIONS

NO.	DATE	DESCRIPTION	APPROVED
0	12/5/03	ISSUED FOR BID	
1	4/11/05	AS-BUILTS	

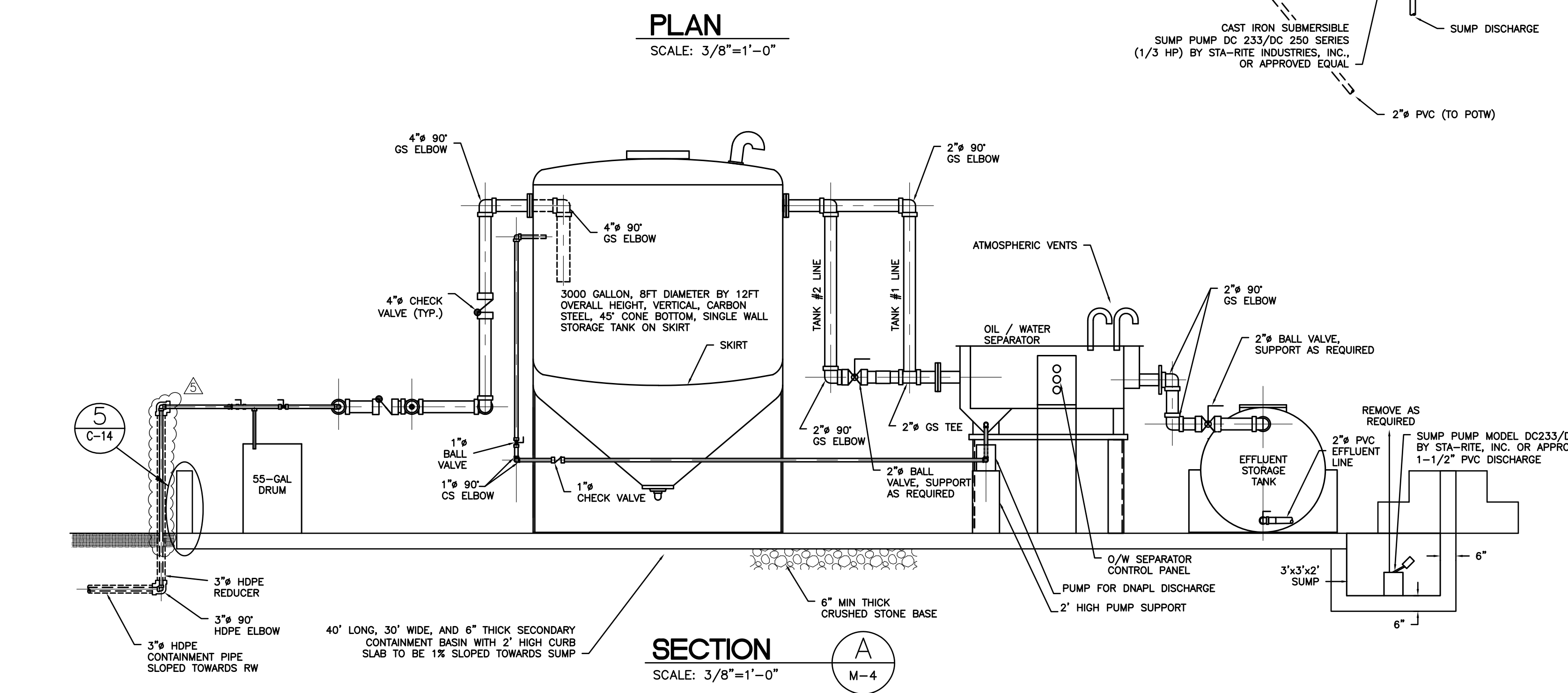
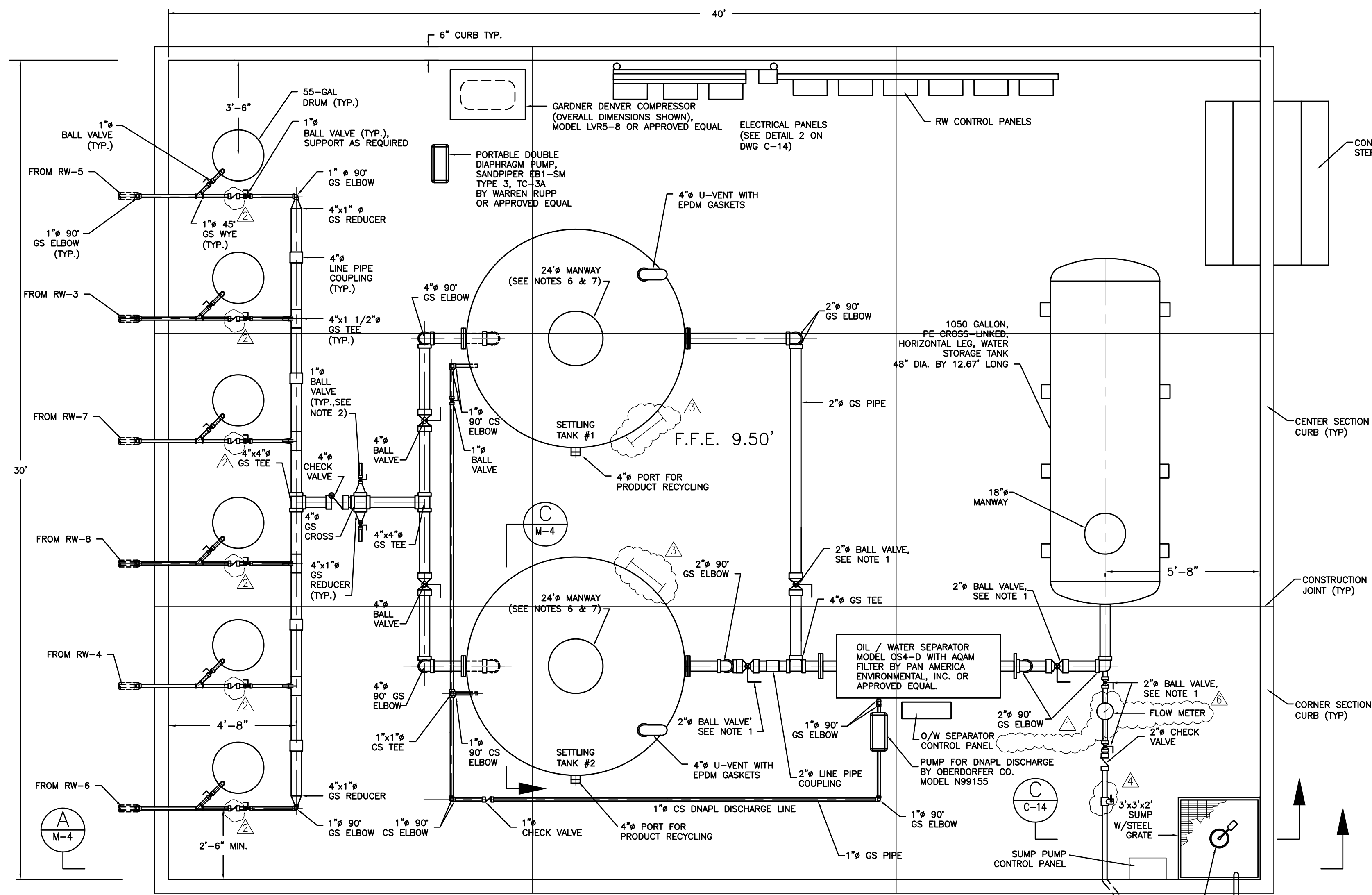
DESIGNED BY: M. ILIC
DRAWN BY: C. BUDSOCK
CHECKED BY: J. STUDER
DRAWING DATE: 12/4/02



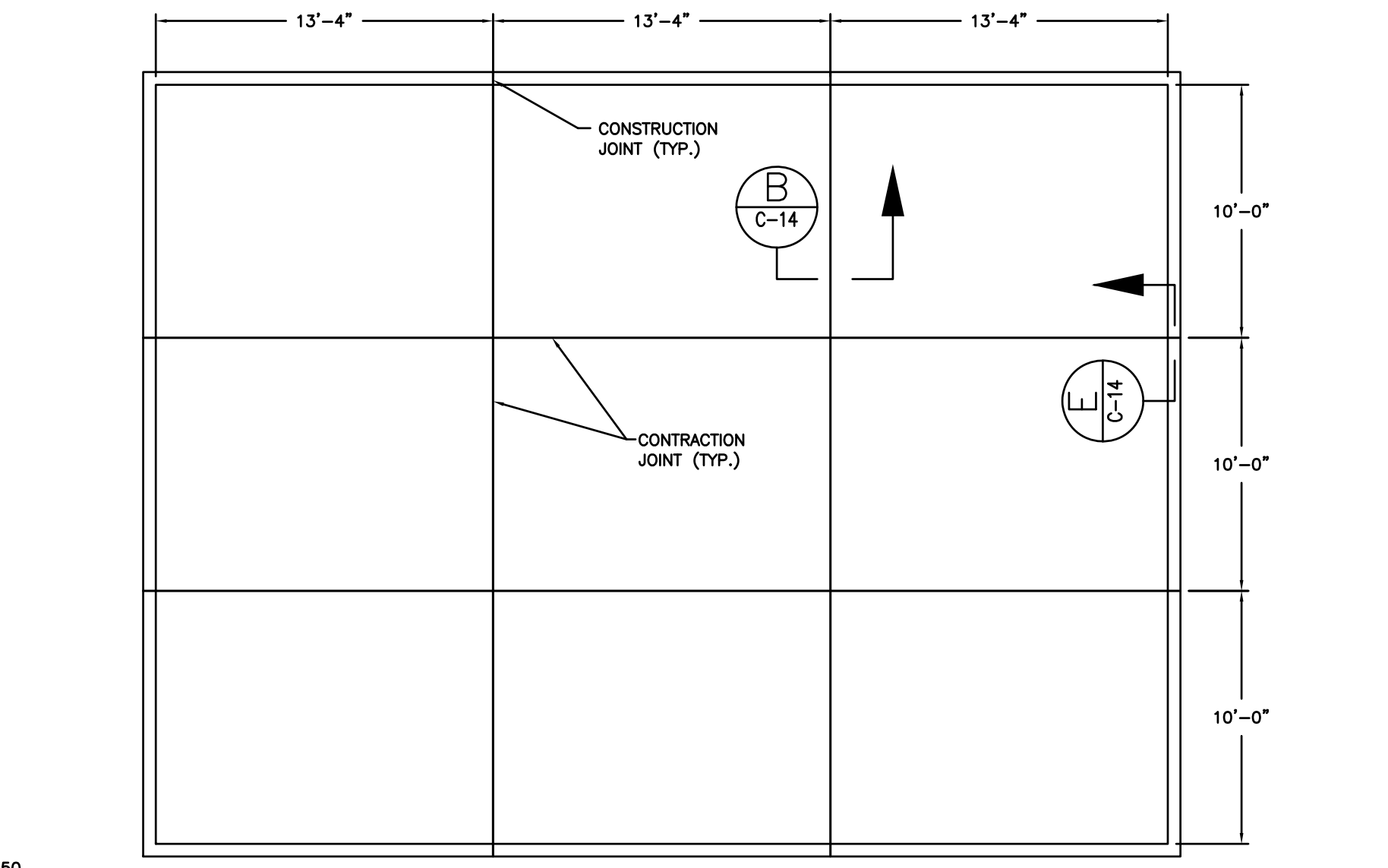
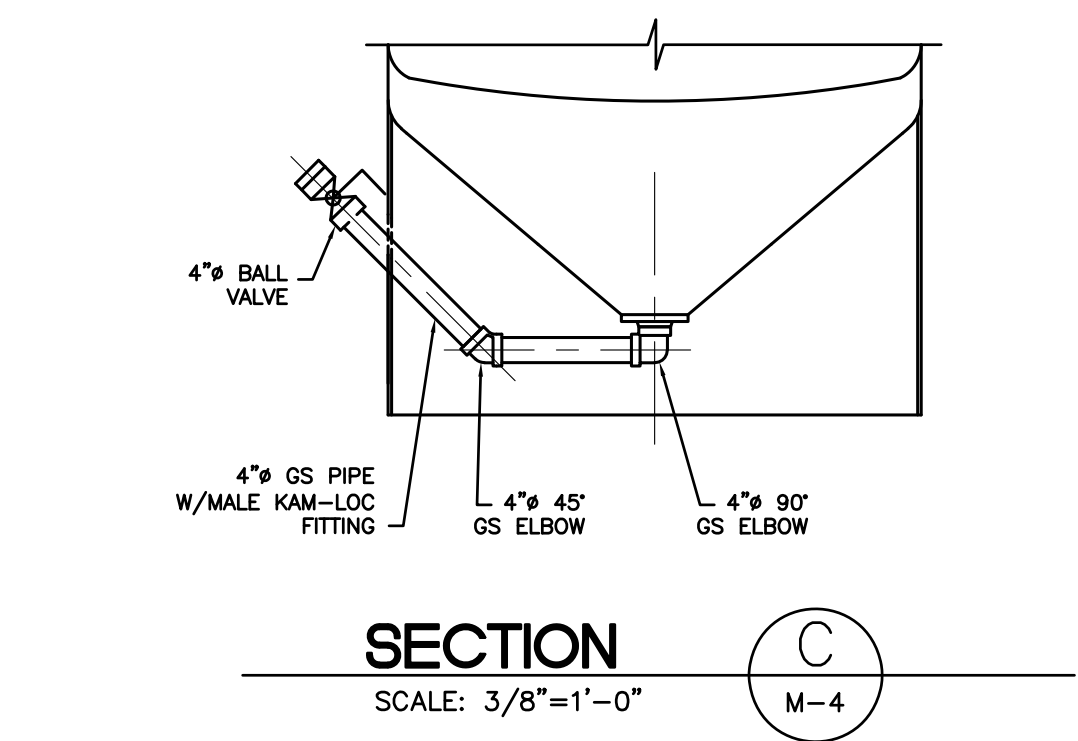
CORRECTIVE MEASURES
IMPLEMENTATION
ALABAMA STATE PORT AUTHORITY
AWTC SITE AND AREA
MOBILE, ALABAMA

DNAPL RECOVERY
SYSTEM DETAILS
AS-BUILT

C14



- NOTES:
- SUPPORT ALL PIPES AND ACCESSORIES IN ACCORDANCE WITH MANUFACTURER'S INSTRUCTIONS, APPLICABLE BUILDING CODES, AND AS NECESSARY TO PROVIDE A FUNCTIONAL INSTALLATION.
 - THIS PUMP WILL BE USED TO EMPTY 55-GAL DRUMS VIA A FLEXIBLE HOSE. CONTRACTOR TO PROVIDE DOUBLE DIAPHRAGM PUMP IN STANDARD ALUMINUM CONSTRUCTION WITH VITON, TEFLON OR BUNA WET END MODEL SANDPIPER EB1-SM Type 3, BY WARREN RUPP OR APPROVED EQUAL. PUMP TO BE DRIVEN BY A GARDNER DENVER COMPRESSOR MODEL LVR5-8. CONTRACTOR TO ALSO PROVIDE FLEXIBLE PIPING TO AND FROM PUMP.
 - CONCRETE SHALL HAVE A MINIMUM 28 DAY COMPRESSIVE STRENGTH OF 3000 POUNDS PER SQUARE INCH.
 - CONTAINMENT BASIN CURB SHALL BE CAST IN TWO PHASES. CORNER SECTIONS SHALL BE INITIALLY CAST AND ALLOWED TO CURE FOR 2 DAYS PRIOR TO CONSTRUCTION OF CENTER SECTIONS OF CURB.
 - PROTECTIVE COATING FOR CONCRETE SURFACE SHALL BE PENNCOAT 401 BY HENKEL SURFACE TECHNOLOGIES OR APPROVED EQUAL.
 - 24" DIAMETER MANWAY TO BE HINGED AND TANK TO BE EQUIPPED WITH OBSERVATION PORT.
 - CONTRACTOR SHALL PROVIDE LADDER AND HORIZONTAL PLATFORM AND SAFETY DEVICES FOR ACCESS TO THE TOP OF EACH TANK. MATERIALS AND CONSTRUCTION SHALL CONFORM TO SECTIONS 7.4 AND 7.5 OF AWWA D100 AND TO APPLICABLE OSHA STANDARDS, INCLUDING 29 CFR 1910. SUBPART D, "WALKING-WORKING SURFACES." LOCATE LADDER AND PLATFORM WHERE APPROVED BY THE ENGINEER AND OWNER.
 - CONTRACTOR SHALL SUBMIT SHOP DRAWINGS OF THE TANK AND APPURTENANCES TO THE ENGINEER FOR REVIEW AND APPROVAL PRIOR TO TANK FABRICATION.



- ▲ EFFLUENT PUMP REMOVED (NOT REQUIRED)
- ▲ ADDED CHECK VALVES
- ▲ ADDED ACCESS LADDER
- ▲ ADDED SAMPLING PORT
- ▲ HDPE EXTENDED ABOVE GRADE
- ▲ FLOW METER ADDED

REVISIONS			DESIGNED BY: M. ILIC
NO.	DATE	DESCRIPTION	APPROVED
0	12/5/03	ISSUED FOR BID	
1	4/11/05	AS-BUILT	



CORRECTIVE MEASURES IMPLEMENTATION
ALABAMA STATE PORT AUTHORITY
AWTC SITE AND AREA
MOBILE, ALABAMA

TANK FARM LAYOUT AND CROSS SECTION (AS-BUILT)

M4